

2 VICINITY MAP



1	SITE DEVELOPMENT PLAN
---	-----------------------



Republika ng Pilipinas
Lungsod ng Quezon
CITY ENGINEERING DEPARTMENT

PROJECT TITLE :

PROPOSED CONSTRUCTION OF STAGE AT RAMON MAGSAYSAY HIGH SCHOOL

BARANGAY PALIGSAHAN, DISTRICT 4, QUEZON CITY

DRAWN BY : mr

DATE : OCT. 07, 2020

CHECKED BY:

REVISION NO.:

NTS.

3 LOCATION MAP

SUBMITTED BY:

ENGR. LEO S. DEL ROSARIO
HEAD, PLANNING & PROGRAMMING DIVISION

RECOMMENDING APPROVAL :

ENGR. ISAGANI R. VERZOSA, JR.
CITY ENGINEERING DEPARTMENT

APPROVED BY :

HON. MA. JOSEFINA G. BELMONTE
CITY MAYOR, QUEZON CITY

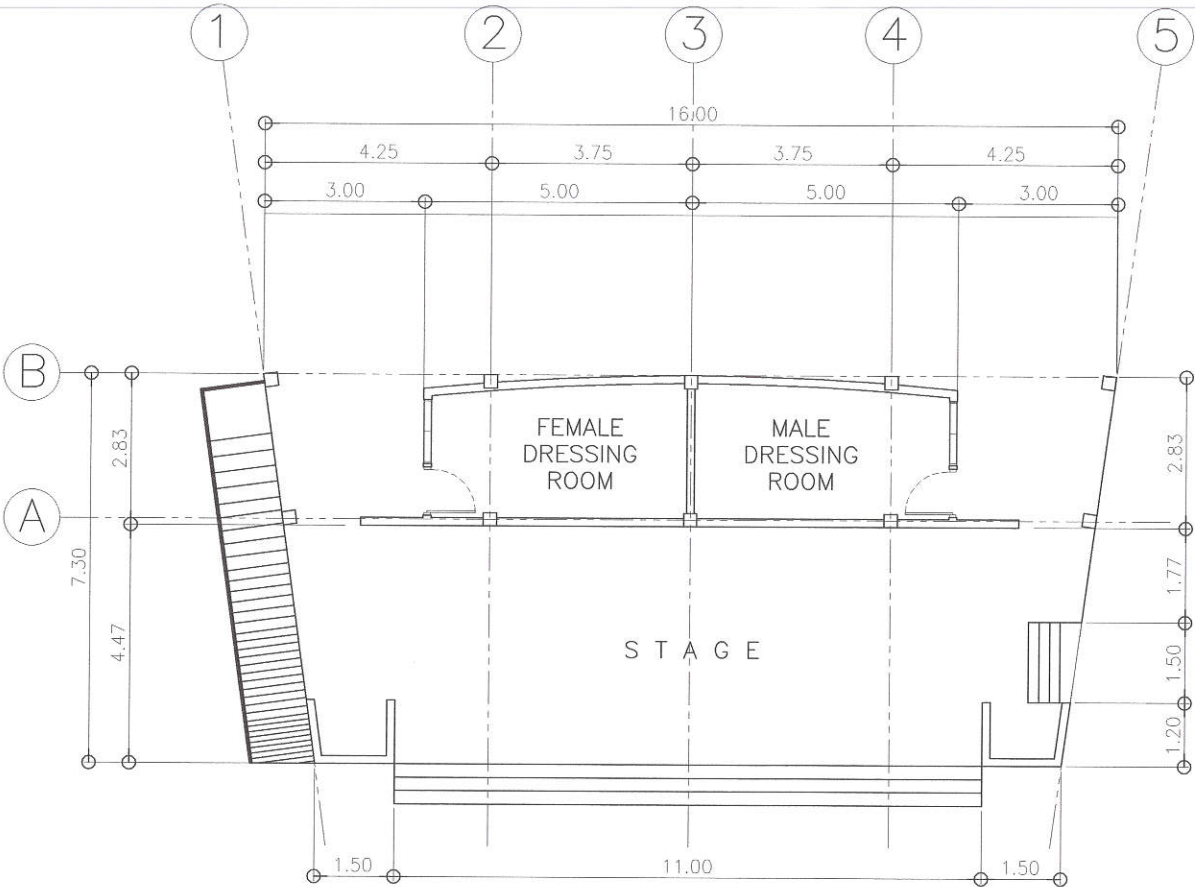
SHEET CONTENT

SITE DEV'T. PLAN
VICINITY MAP
LOCATION MAP

SHEET NO.

AR-01

20-00136



1 STAGE FLOOR PLAN

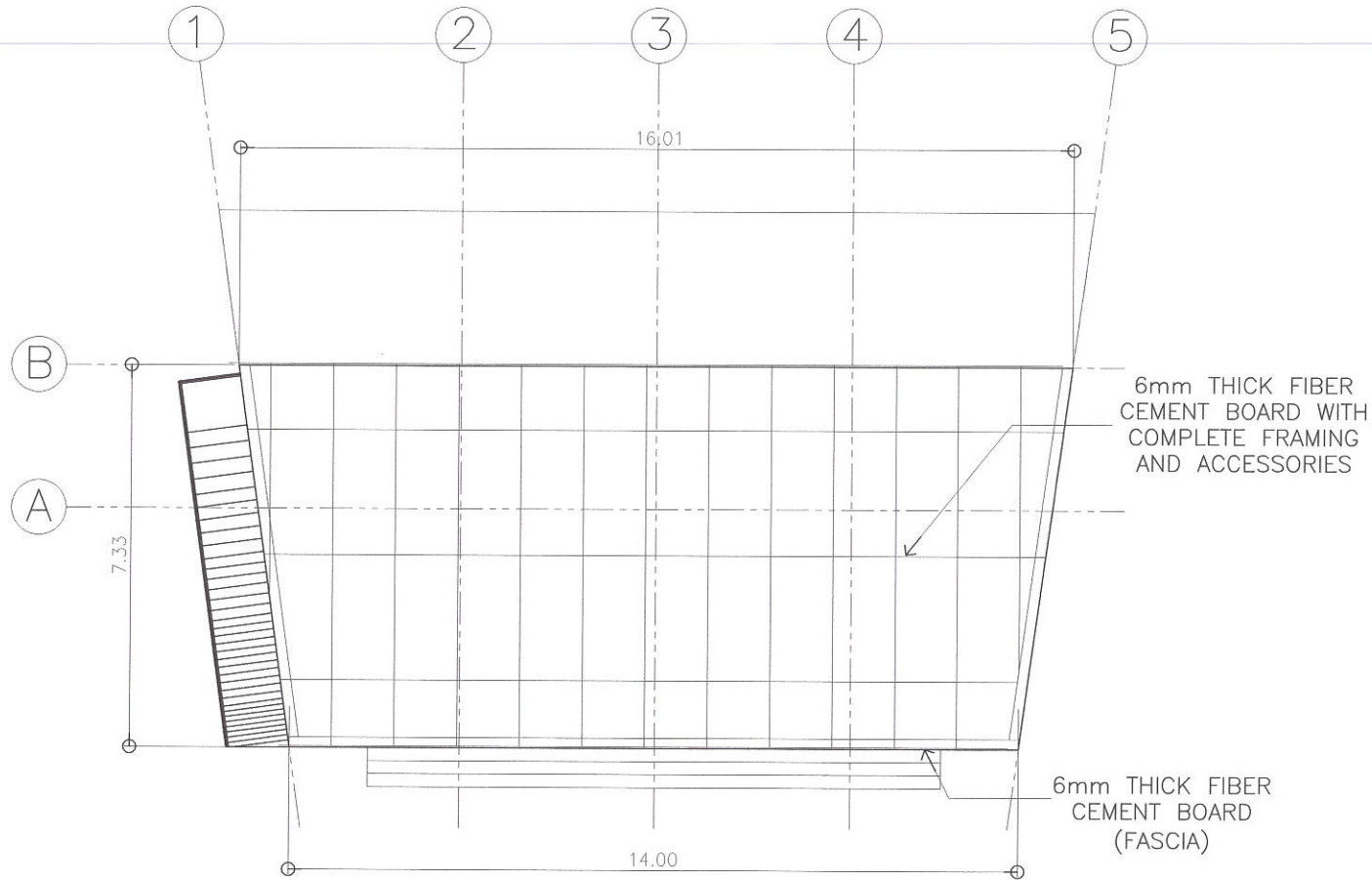
SCALE: 1:100m.



Republika ng Pilipinas
Lungsod ng Quezon
CITY ENGINEERING DEPARTMENT

PROJECT TITLE :	DRAWN BY : mmm/brgz	SUBMITTED BY :	RECOMMENDING APPROVAL :	APPROVED BY :	SHEET CONTENT	SHEET NO.
PROPOSED CONSTRUCTION OF STAGE AT RAMON MAGSAYSAY HIGH SCHOOL	DATE : OCT. 07, 2020	CHECKED BY :	ENGR. LEO S. DEL ROSARIO HEAD, PLANNING & PROGRAMMING DIVISION	ENGR. ISAGANI R. VERZOSA, JR. OIC, CITY ENGINEERING DEPARTMENT	HON. MA. JOSEFINA G. BELMONTE CITY MAYOR, QUEZON CITY	STAGE FLOOR PLAN AR-02
BARANGAY PALIGSAHAN, DISTRICT 4, QUEZON CITY	REVISION NO.:					

20-00136

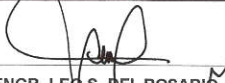





1 ROOFING PLAN

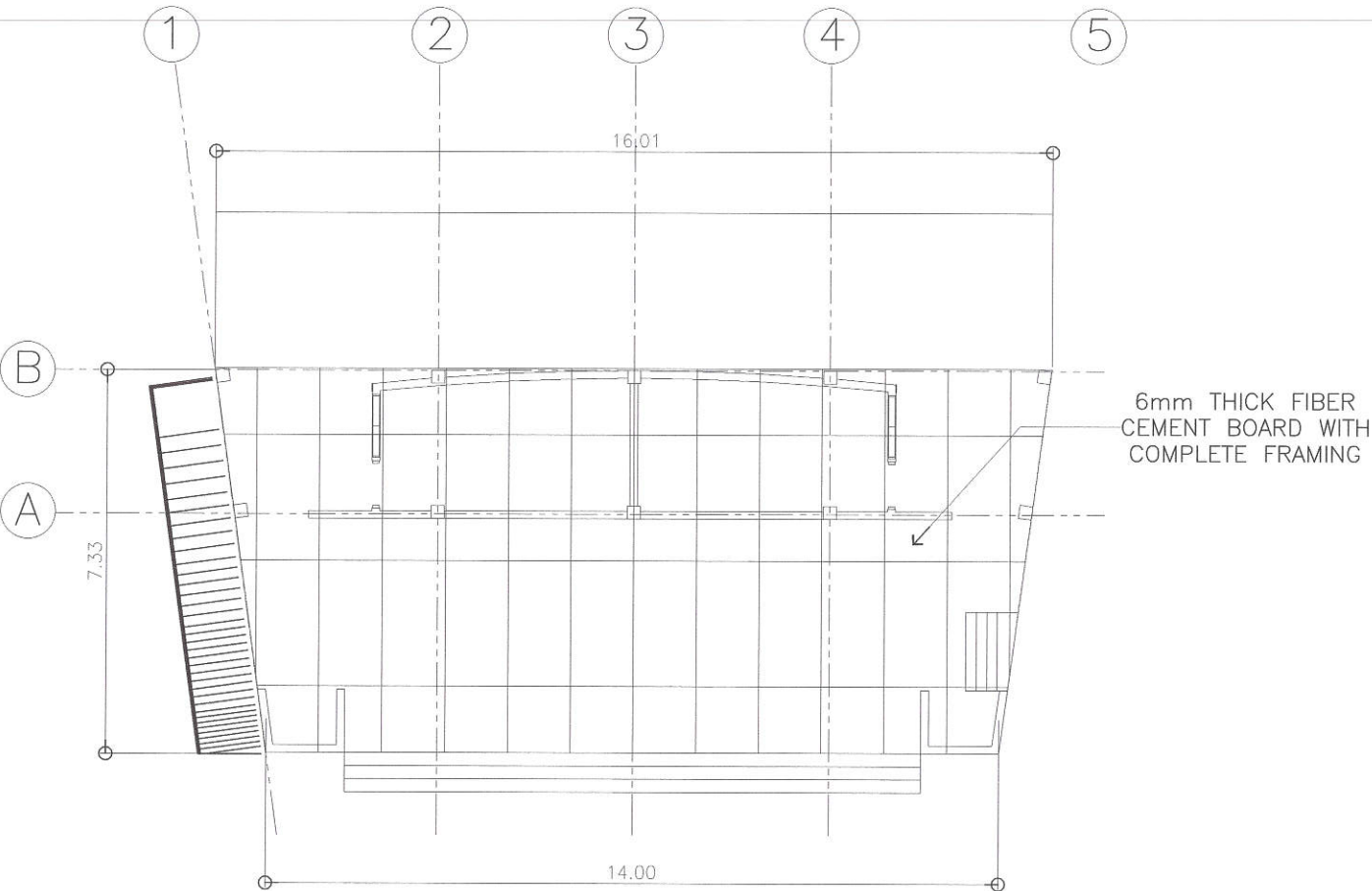
SCALE:1:100m.



Republika ng Pilipinas
Lungsod ng Quezon
CITY ENGINEERING DEPARTMENT

PROJECT TITLE :	DRAWN BY : mnnvbrgz	SUBMITTED BY :	RECOMMENDING APPROVAL :	APPROVED BY :	SHEET CONTENT	SHEET NO.
PROPOSED CONSTRUCTION OF STAGE AT RAMON MAGSAYSAY HIGH SCHOOL	DATE : OCT. 07, 2020				STAGE ROOFING PLAN	AR-03
BARANGAY PALIGSAHAN, DISTRICT 4, QUEZON CITY	CHECKED BY : 	ENGR. LEO S. DEL ROSARIO HEAD, PLANNING & PROGRAMMING DIVISION	ENGR. ISAGANI R. VERZOSA, JR. OIC, CITY ENGINEERING DEPARTMENT	HON. MA. JOSEFINA G. BELMONTE CITY MAYOR, QUEZON CITY		
	REVISION NO.:					

20-00136







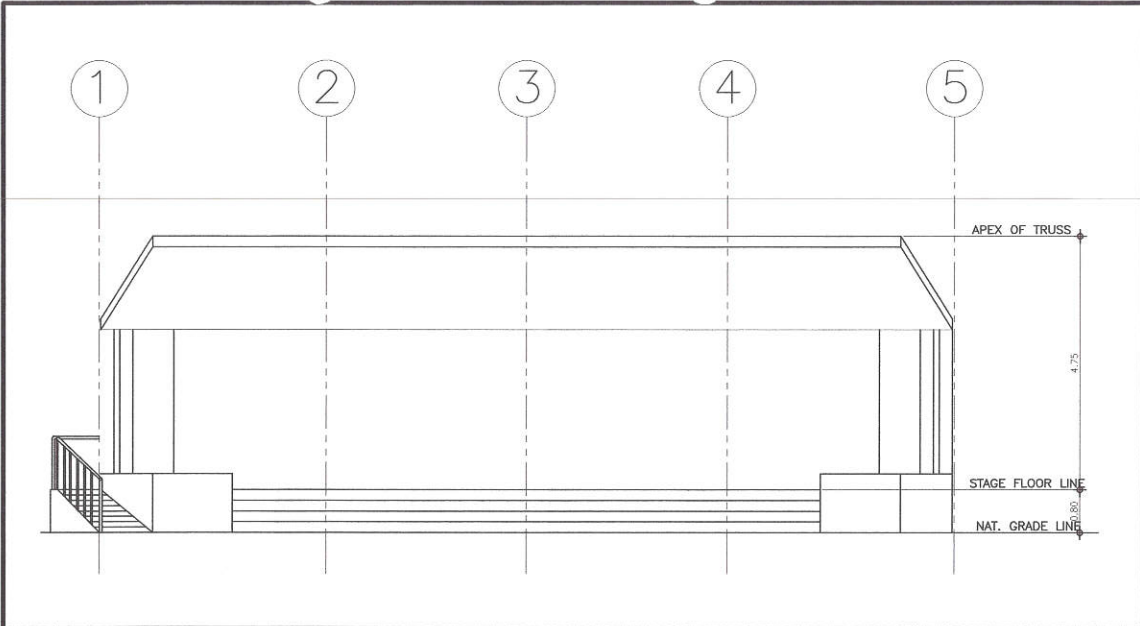
1 CEILING PLAN (STAGE)

SCALE:1:100m.

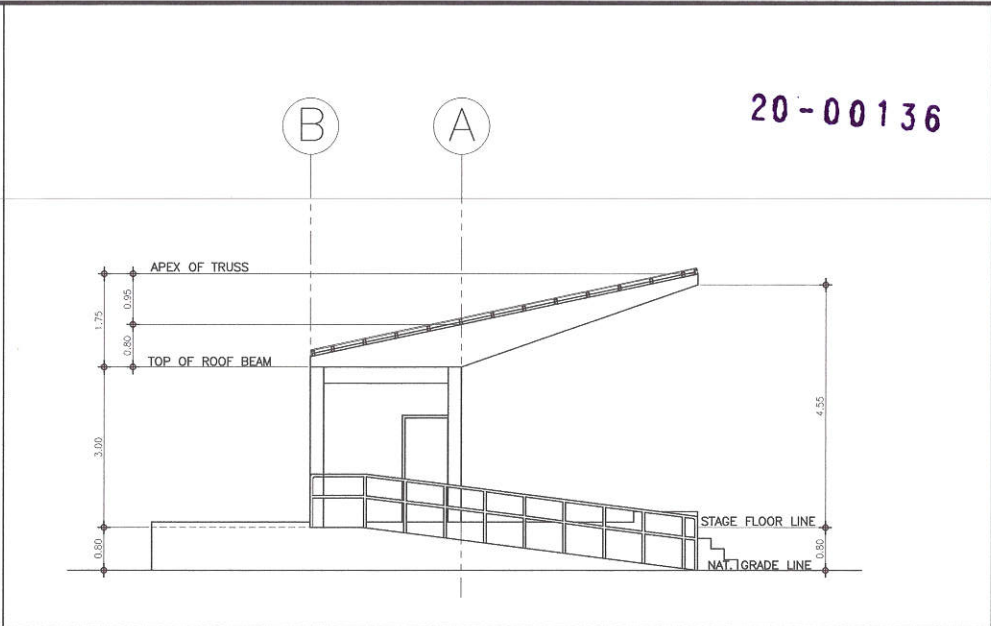


Republika ng Pilipinas
Lungsod ng Quezon
CITY ENGINEERING DEPARTMENT

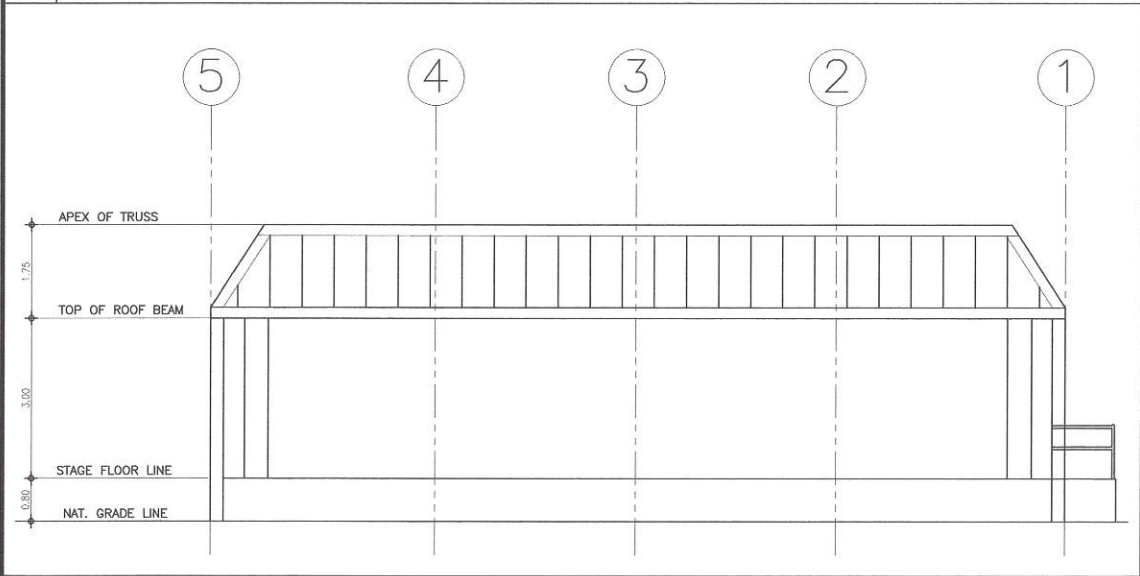
PROJECT TITLE :	DRAWN BY : mnm/vrgz	SUBMITTED BY :	RECOMMENDING APPROVAL :	APPROVED BY :	SHEET CONTENT	SHEET NO.
PROPOSED CONSTRUCTION OF STAGE AT RAMON MAGSAYSAY HIGH SCHOOL	DATE : OCT. 07, 2020	 ENGR. LEO S. DEL ROSARIO HEAD , PLANNING & PROGRAMMING DIVISION	 ENGR. ISAGANI R. VERZOSA, JR. OIC, CITY ENGINEERING DEPARTMENT	 HON. MA. JOSEFINA G. BELMONTE CITY MAYOR , QUEZON CITY	REFLECTED CEILING PLAN	AR-04
	CHECKED BY : 					
BARANGAY PALIGSAHAN, DISTRICT 4, QUEZON CITY	REVISION NO.:					



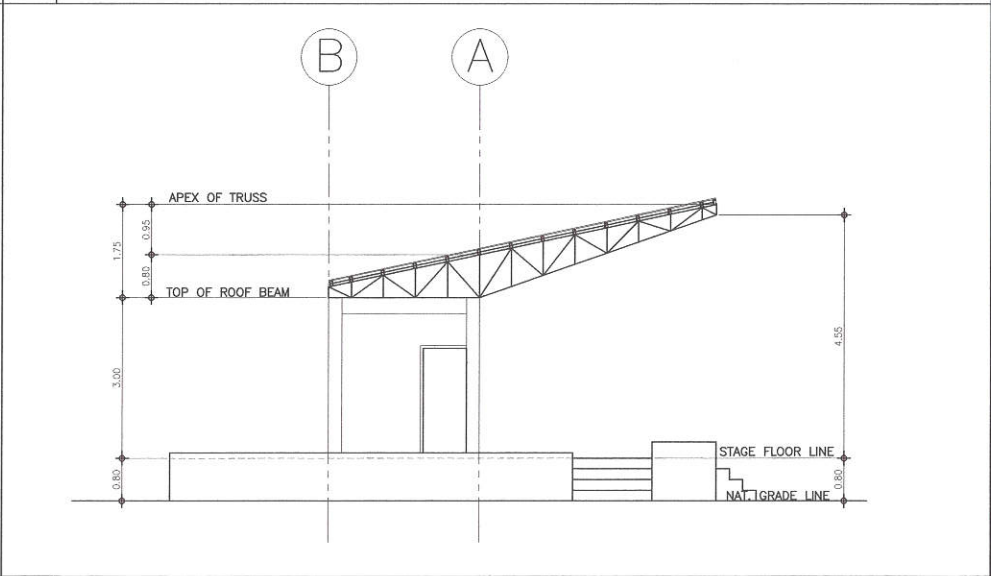
1 FRONT ELEVATION SCALE1:100m.





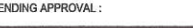


2 TYPICAL SIDE ELEVATION SCALE1:100m.



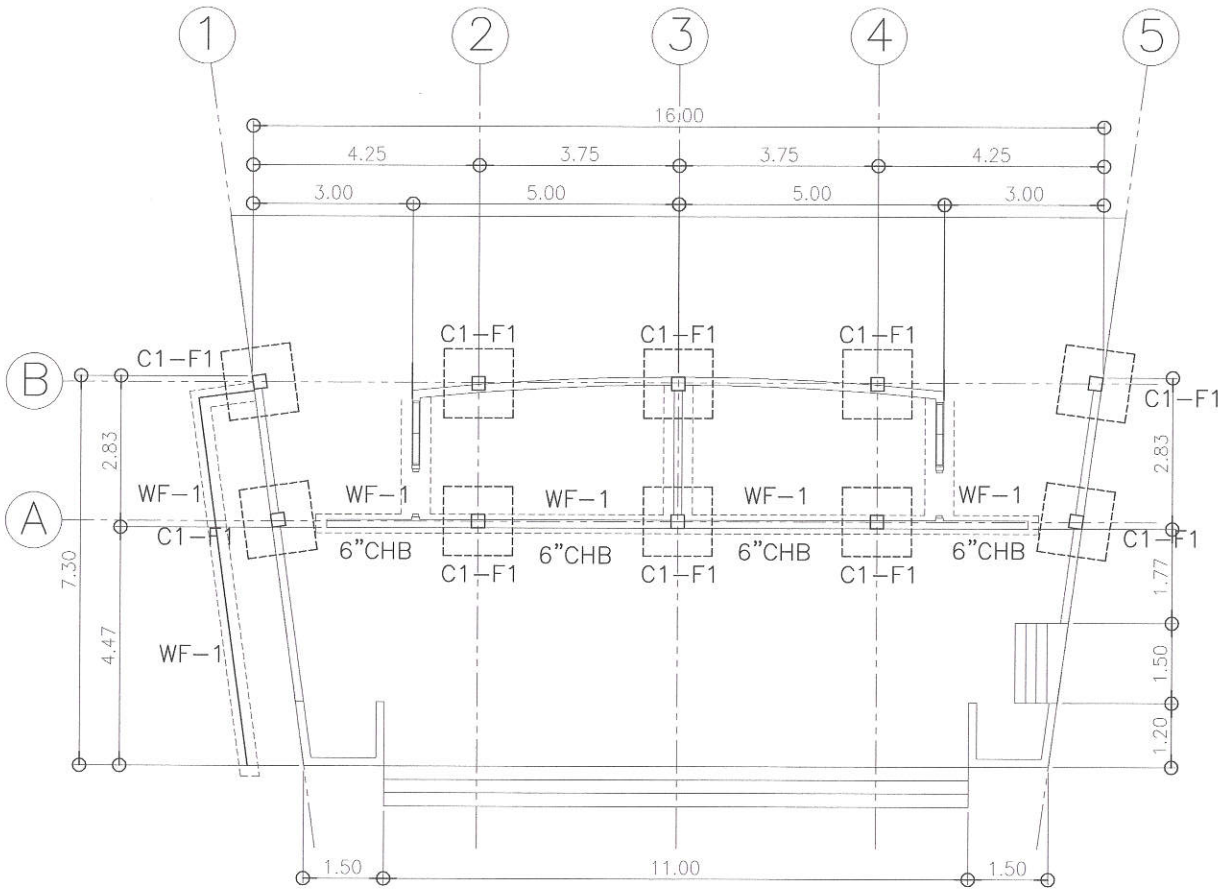
3 REAR ELEVATION SCALE1:100m.



4 CROSS SECTION SCALE1:100m.

 <div>Republika ng Pilipinas Lungsod ng Quezon CITY ENGINEERING DEPARTMENT</div>	PROJECT TITLE :	DRAWN BY : mnmvbrgz	SUBMITTED BY :	RECOMMENDING APPROVAL :	APPROVED BY :	SHEET CONTENT	SHEET NO.
	PROPOSED CONSTRUCTION OF STAGE AT RAMON MAGSAYSAY HIGH SCHOOL	DATE : OCT. 07, 2020	 ENGR. LEO S. DEL ROSARIO HEAD , PLANNING & PROGRAMMING DIVISION	 ENGR. ISAGANI R. VERZOSA, JR. OIC, CITY ENGINEERING DEPARTMENT	 HON. MA. JOSEFINA G. BELMONTE CITY MAYOR , QUEZON CITY	FRONT ELEVATION TYPICAL SIDE ELEVATION REAR ELEVATION CROSS SECTION	AR-05
		CHECKED BY : 					
	BARANGAY PALIGSAHAN, DISTRICT 4, QUEZON CITY	REVISION NO.:					

20-00136




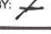


1 FOUNDATION PLAN (STAGE)

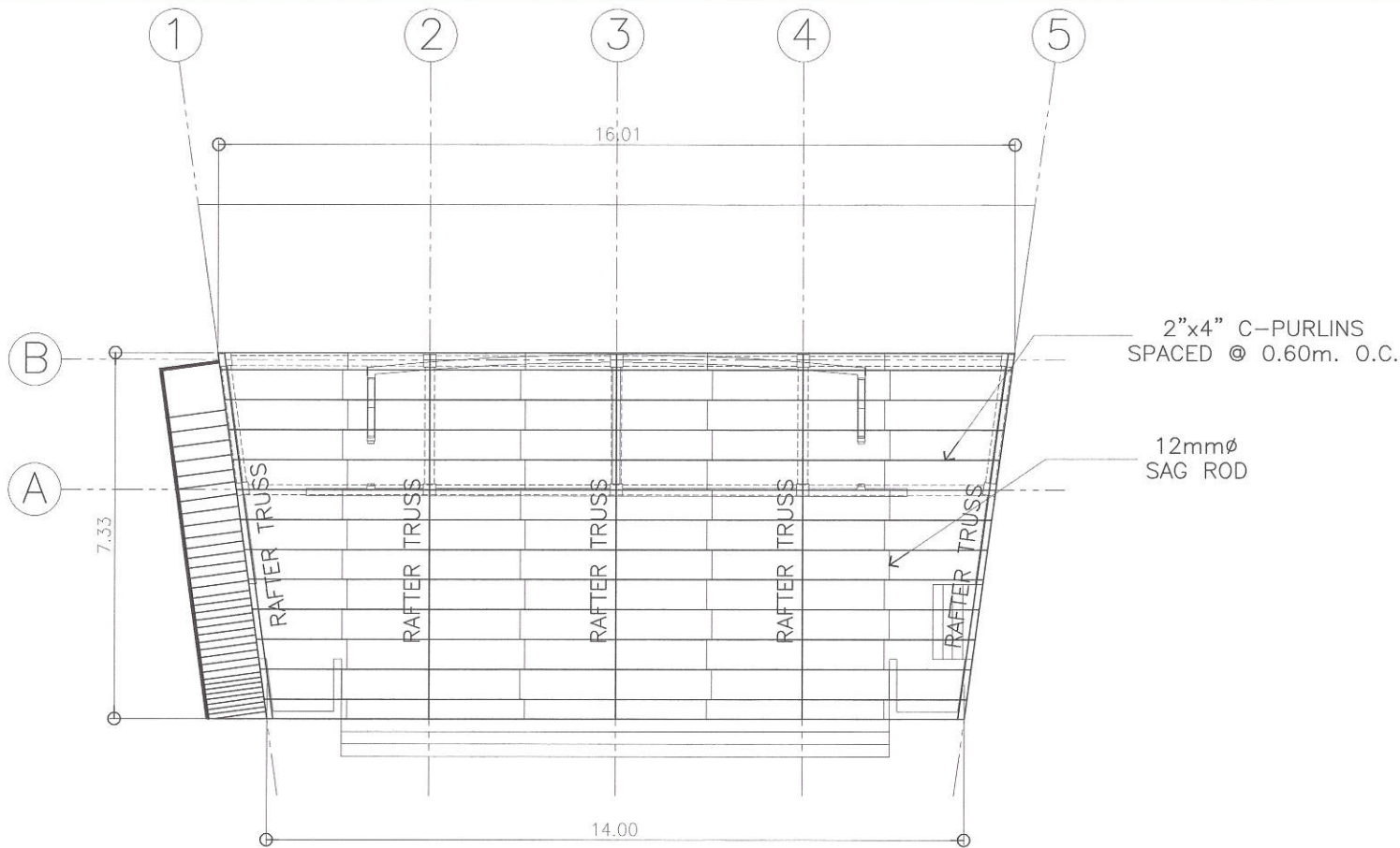
SCALE 1:100m.



Republika ng Pilipinas
Lungsod ng Quezon
CITY ENGINEERING DEPARTMENT

PROJECT TITLE :	DRAWN BY : mnm/brgz	SUBMITTED BY :	RECOMMENDING APPROVAL :	APPROVED BY :	SHEET CONTENT	SHEET NO.
PROPOSED CONSTRUCTION OF STAGE AT RAMON MAGSAYSAY HIGH SCHOOL	DATE : OCT. 07, 2020	 ENGR. LEO S. DEL ROSARIO HEAD, PLANNING & PROGRAMMING DIVISION	 ENGR. SAGANI R. VERZOSA, JR. OIC, CITY ENGINEERING DEPARTMENT	 HON. MA. JOSEFINA G. BELMONTE CITY MAYOR, QUEZON CITY	FOUNDATION PLAN	ST-01
BARANGAY PALIGSAHAN, DISTRICT 4, QUEZON CITY	CHECKED BY : 					
	REVISION NO.:					

20-00136




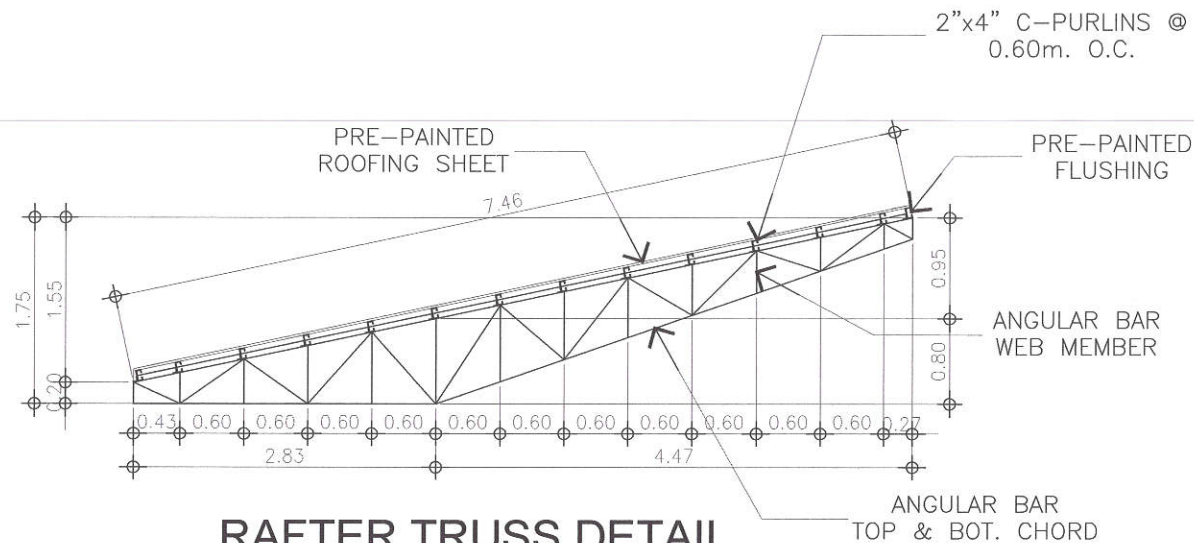
1 ROOF FRAMING PLAN (STAGE)

SCALE:1:100m.



Republika ng Pilipinas
Lungsod ng Quezon
CITY ENGINEERING DEPARTMENT

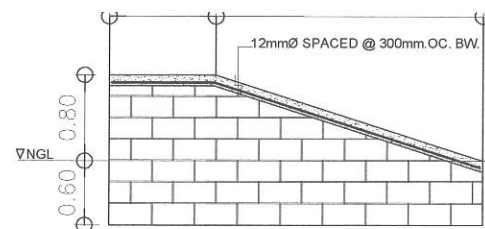
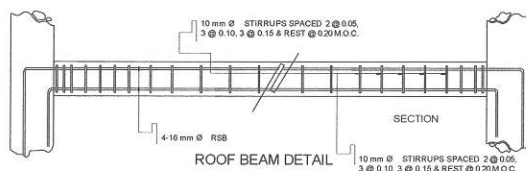
PROJECT TITLE :	DRAWN BY : mnm/brgz	SUBMITTED BY :	RECOMMENDING APPROVAL :	APPROVED BY :	SHEET CONTENT	SHEET NO.
PROPOSED CONSTRUCTION OF STAGE AT RAMON MAGSAYSAY HIGH SCHOOL	DATE : OCT. 07, 2020	ENGR. LEO S. DEL ROSARIO HEAD, PLANNING & PROGRAMMING DIVISION	ENGR. ISAGANI R. VERZOSA, JR. OIC, CITY ENGINEERING DEPARTMENT	HON. MA. JOSEFINA G. BELMONTE CITY MAYOR, QUEZON CITY	ROOF FRAMING PLAN	ST-02
BARANGAY PALIGSAHAN, DISTRICT 4, QUEZON CITY	CHECKED BY : 	REVISION NO.:				



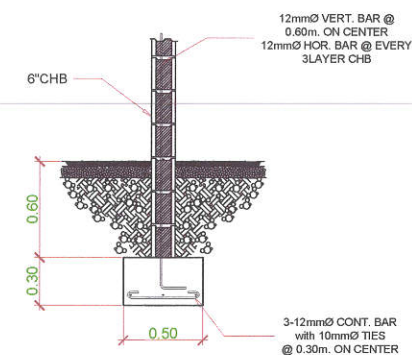
RAFTER TRUSS DETAIL

BEAM SCHEDULE

MARK	DIMENSION		RIGHT SUPPORT		MID-SPAN		LEFT SUPPORT		WEB BAR	STIRRUPS
	B(mm)	H(mm)	TOP	BOTTOM	TOP	BOTTOM	TOP	BOTTOM		10mmØ DSB
RB - 1	200	300	3 - 16Ø	2 - 16Ø	2 - 16Ø	3 - 16Ø	3 - 16Ø	2 - 16Ø		1 @ 0.05, 3 @ 0.10, 3 @ 0.15 & REST @ 0.25 M.O.C.




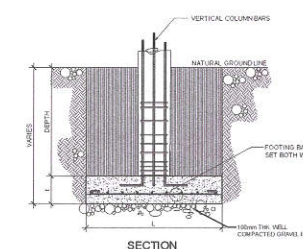
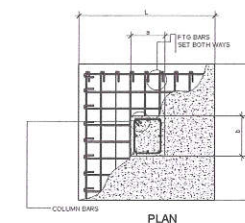
RAMP DETAIL



WALL FOOTING DETAIL (WF-1)

COLUMN SCHEDULE

MARK	C - 1
COLUMN SIZE	
VERTICAL BARS	6 - 16mm \varnothing
COL. TIES	1-12mm \varnothing BARS 2@0.05m, 3@0.10m 5@0.15m, REST @ 0.20m. ON CENTER



FOOTING SCHEDULE

MARK	DIMENSION		t (mm)	SS	LS	EMBEDMENT (mm)
	W (mm)	L (mm)				
F - 1	1300	1300	300	7 - 10mm Ø	7 - 10mm Ø	2.00m MINIMUM



Republika ng Pilipinas
Lungsod ng Quezon
CITY ENGINEERING DEPARTMENT

PROJECT TITLE :

PROPOSED CONSTRUCTION OF STAGE AT RAMON MAGSAYSAY HIGH SCHOOL

BARANGAY PALIGSAHAN, DISTRICT 4, QUEZON CITY

DRAWN BY : mnmv/brogz

DATE : OCT. 07, 2020

CHECKED BY: _____

REVISION NO.:

SUBMITTED BY:

ENGR. LEO S. DEL ROSARIO
HEAD, PLANNING & PROGRAMMING DIVISION

RECOMMENDING APPROVAL:

ENGR. ISAGANI R. VERZOSA, JR.
OIC, CITY ENGINEERING DEPARTMENT

APPROVED BY :

HON. MA. JOSEFINA G. BELMONTE
CITY MAYOR, QUEZON CITY

SHEET CONTENT

RAFTER TRUSS DIAGRAM
 COLUMN & FOOTING DET.
 BEAM SCHED. & DETAIL
 WALL FOOTING DET.
 RAMP DETAIL

SHEET NO.

ST-03

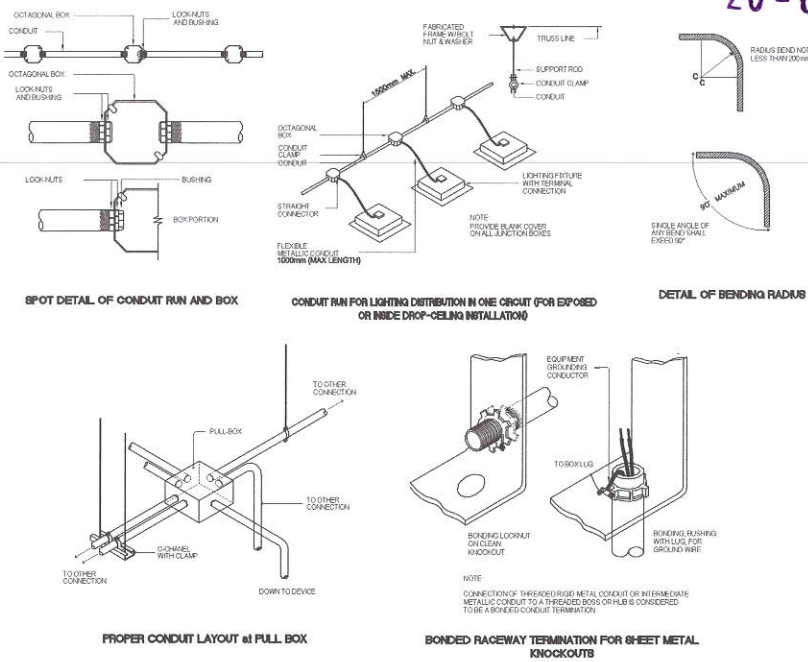
1. ALL ELECTRICAL WORKS SHALL BE DONE IN ACCORDANCE WITH THE PROVISIONS OF THE LATEST EDITION OF THE PHILIPPINE ELECTRICAL CODE, THE LAWS AND ORDINANCES OF THE LOCAL CODE ENFORCING AUTHORITIES AND THE REQUIREMENTS OF THE LOCAL POWER AND TELEPHONE UTILITY COMPANY.
2. THE CONTRACTOR SHALL SECURE ALL PERMITS AND PAY ALL FEES REQUIRED FOR THE WORK AND SHALL FURNISH THE OWNER THROUGH THE ENGINEERS, FINAL CERTIFICATES OF ELECTRICAL INSPECTION AND APPROVAL FROM PROPER GOVERNMENT AUTHORITIES FOR COMPLETION OF WORK.
3. ALL EMBEDDED BRANCH CIRCUITS SHALL BE PVC CONDUITS AND FOR EXPOSED INSTALLATION SHALL BE IMC SUPPORTED BY CONDUIT CLAMPS EVERY 700 MILLIMETERS
4. PULL BOXES SHALL BE PROVIDED BY THE CONTRACTOR WHENEVER NECESSARY TO FACILITATE WIRE PULLING EVEN IF THESE ARE NOT INDICATED ON THE PLANS. SIZING OF ALL PULLBOXES SHALL BE COMPUTED BASED ON THE CODE REQUIREMENTS. SUBMIT SHOP DRAWINGS TO THE ENGINEER FOR APPROVAL PRIOR TO FABRICATION. LOCATION OF PULLBOXES SHALL BE APPROVED BY THE ARCHITECT/ENGINEER AND MUST BE REFLECTED ON THE "AS-BUILT" PLAN.
5. ALL POWER OUTLETS AND SWITCHES SHALL BE GROUNDING TYPE WITH PARALLEL SLOTS FOR 230 V.
6. PROVIDE GROUND FAULT CURRENT INTERRUPTER CIRCUIT BREAKER FOR LOADS MARKED "GFCI" ON THE PLAN.
7. ALL METALLIC CONDUITS, CABINETS AND EQUIPMENT SHALL BE PROPERLY GROUNDED AND BONDED.
8. UNLESS OTHERWISE NOTED, MOUNTING HEIGHT FOR WALL MOUNTED DEVICES SHALL BE AS FOLLOWS:

RECEPTACLE OUTLET - 300 MM AFF , 150MM ABOVE WORKING COUNTER.
TELEPHONE OUTLET - 300 MM AFF
CATV OUTLET - 300 MM AFF
LIGHTING SWITCH - 1400 MM AFF
PANELBOARD - 1600 MM AFF

9. REFER TO MECHANICAL, PLUMBING ANF FIRE PROTECTION DRAWINGS FOR RATINGS AND LOCATIONS OF EQUIPMENT AS WELL AS THEIR CONTROL SEQUENCES AS SPECIFIED AND OR SHOWN UNDER THEIR RESPECTIVE SECTIONS.
10. ALL MATERIALS TO BE USED SHALL BE OF THE BEST QUALITY , BRAND NEW AS SPECIFIED.
11. THE DRAWINGS AND SPECIFICATIONS ARE INTENDED TO PRESENT GENERAL LAYOUT AND BROAD OUTLINE/DESCRIPTION OF THE PROJECT BUT DO NOT NECESSARILY INDICATE/DESCRIBED ACTUAL LOCATIONS, LEVEL AND DISTANCES OF THE EQUIPMENT. THE CONTRACTOR IS HEREBY REQUIRED TO MAKE SUCH ADJUSTMENT AT THE JOBSITE AS LOCATION, DISTANCES AND LEVELS ARE GOVERNED BY ACTUAL FIELD CONDITIONS.
12. ANY DISCREPANCY BETWEEN THE PLANS AND SPECIFICATIONS SHALL BE BROUGHT TO THE ATTENTION OF THE ENGINEER FOR CLARIFICATION DECISION.
13. ALL LIGHTING AND CONVENIENCE OUTLET CIRCUITS SHALL BE 3.5 SQ. MM. THWN-2 COPPER WIRE UNLESS OTHERWISE NOTED. MINIMUM SIZE OF WIRE SHALL BE 3.5 SQ. MM. COPPER WIRE. ALL WIRES AND CABLES SHALL BE COLOR CODED AS FOLLOWS:

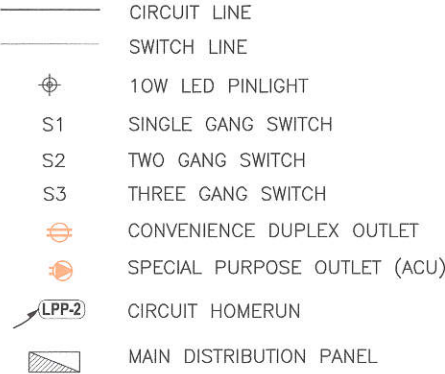
LINE 1 - RED
LINE 2 - YELLOW
NEUTRAL - WHITE
GROUND - GREEN

14. BOXES, WIRE, GUTTERS, ENCLOSURE SHALL BE FABRICATED FROM STEEL WITH THICKNESS AS FOLLOWS:
MAXIMUM WIDTH OF THE WIDEST SURFACE STEEL
UP TO INCLUDING 152.40 MM GA 16 PAINTED WITH METAL PRIMER EPOXY AND TOPCOAT
OVER 152.40 MM BUT NOT OVER 457.30 GA 14 PAINTED WITH METAL PRIMER EPOXY AND TOPCOAT
OVER 457.30 MM BUT NOT OVER 762 MM GA 12 PAINTED WITH METAL PRIMER EPOXY AND TOPCOAT
OVER 762 MM GA 10 PAINTED WITH METAL PRIMER EPOXY AND TOPCOAT
15. ALL ELECTRICAL WORKS HEREIN SHALL BE EXECUTED BY EXPERIENCED MEN UNDER THE DIRECT SUPERVISION OF A FULL-TIME LICENSED ELECTRICAL ENGINEER AND A DULY ACCREDITED ELECTRICAL CONTRACTOR BY PCAB. WORKS SHALL BE NEATLY PLACED, SECURELY FASTENED AND PROPERLY FINISHED.
16. TYPE OF SERVICE ENTRANCE SHALL BE SINGLE-PHASE, TWO-WIRE PLUS GROUND, , 60 HERTZ, 230V AC NOMINAL
17. CONDUITS IN NO CASE SHALL THERE BE MORE THAN THE EQUIVALENT OF FOUR QUARTER BENDS IN ANY ONE RUN. ALL CONDUIT BENDS SHALL BE FIELD MADE BY USING HYDRAULIC BENDERS. MINIMUM BENDING RADIUS MUST BE IN ACCORDANCE TO THE CODE REQUIREMENTS.
18. UPON COMPLETION OF ELECTRICAL CONSTRUCTION WORK, INSULATION RESISTANCE TEST AND FUNCTIONALITY TEST SHALL BE PERFORMED BY THE CONTRACTOR INCLUSIVE OF THE INSTALLATION TO BE REPORTED IN DETAILS ON FORMS APPROVED BY THE QUEZON CITY ENGINEERING DEPARTMENT REPRESENTATIVE. THE GROUND RESISTANCE FOR ELECTRICAL SYSTEMS SHALL NOT BE MORE THAN 5 OHMS. COMMUNICATION GROUNDING RESISTANCE SHALL NOT EXCEED 2 OHMS.



2 MISCELLANEOUS DETAILS

SCALE: NTS



1 GENERAL NOTES

SCALE: NTS

3 LEGEND & SYMBOLS

SCALE: NTS



Republika ng Pilipinas
Lungsod ng Quezon
CITY ENGINEERING DEPARTMENT

PROJECT TITLE :
**PROPOSED CONSTRUCTION OF STAGE
AT RAMON MAGSAYSAY HIGH SCHOOL**
BARANGAY PALIGSAHAN, DISTRICT 4, QUEZON CITY

DRAWN BY : mnm/bngz
DATE : OCT. 07, 2020
CHECKED BY :
REVISION NO.:

SUBMITTED BY:

ENGR. LEO S. DEL ROSARIO
HEAD , PLANNING & PROGRAMMING DIVISION

RECOMMENDING APPROVAL :

ENGR. ISAGANI R. VERZOSA, JR.
OIC, CITY ENGINEERING DEPARTMENT

APPROVED BY :

HON. MA. JOSEFINA G. BELMONTE
CITY MAYOR , QUEZON CITY

SHEET CONTENT
GENERAL NOTES
MISCELL
SHEET NO.
EL-01

20-00136

LIGHTING & POWER PANEL: "LPP"

MAIN CIRCUIT BREAKER INTERRUPTING CAPACITY @ 240 VOLTS 10 kAIC
BRANCHES CIRCUIT BREAKER INTERRUPTING CAPACITY @ 240 VOLTS 10 kAIC

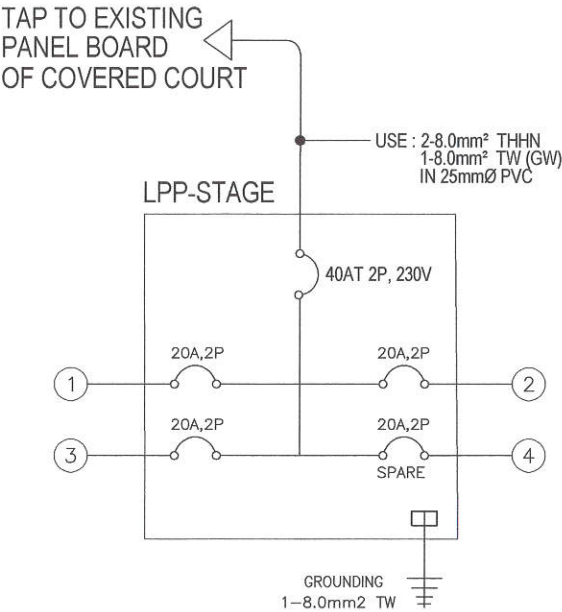
LOCATION: GROUND FLOOR
240 VOLTS, SINGLE PHASE, 2 - WIRE AND GROUND
FLUSHED MOUNTED, NEMA 1, WITH GROUNDING TERMINAL STRIP
CENTER MAIN : 40AT 2P, TMCB BOLT - ON

CKT NO.	VOLTS	OUTLET		OTHER LOAD SERVICE	AMPERE LOAD		3 Ø	VOLT AMPERE	CIRCUIT BREAKER	SIZE OF WIRE AND CONDUITS
		LO	CO		1 Ø					
1	230	26			5.65			1,300	20 AT 2P, BOLT ON	2 - 3.5mm ² THHN WIRE IN 20mm Ø (½") PVC
2	230		5		3.91			900	20 AT 2P, BOLT ON	2 - 3.5mm ² THHN WIRE and 1(ONE) 3.5mm ² THHN GROUND WIRE IN 20mm Ø (½") PVC
3	230		5		3.91			900	20 AT 2P, BOLT ON	2 - 3.5mm ² THHN WIRE and 1(ONE) 3.5mm ² THHN GROUND WIRE IN 20mm Ø (½") PVC
4	230			SPARE					20 AT 2P, BOLT ON	
				TOTAL	13.48			3,100		

IT = (3,100 VA / 230 V) = 13.48
LPP - MAIN CIRCUIT BREAKER
USE : 40 AT 2P CB BOLT-ON

SERVICE ENTRANCE
USE : 2 - 8.0 mm² THHN WIRE & 1 - 8.0mm² TW WIRE
IN 25 mm Ø PVC PIPE

FEED FROM:
EXISTING PANEL BOARD OF
COVERED COURT



1 SCHEDULE OF LOADS

SCALE: NTS

2 PANEL BOARD DETAILS

SCALE: 1:100m.



Republika ng Pilipinas
Lungsod ng Quezon
CITY ENGINEERING DEPARTMENT

PROJECT TITLE :
**PROPOSED CONSTRUCTION OF STAGE
AT RAMON MAGSAYSAY HIGH SCHOOL**
BARANGAY PALIGSAHAN, DISTRICT 4, QUEZON CITY

DRAWN BY : mnm/brgz
DATE : OCT. 07, 2020
CHECKED BY :
REVISION NO.:

SUBMITTED BY :
ENGR. LEO S. DEL ROSARIO
HEAD , PLANNING & PROGRAMMING DIVISION

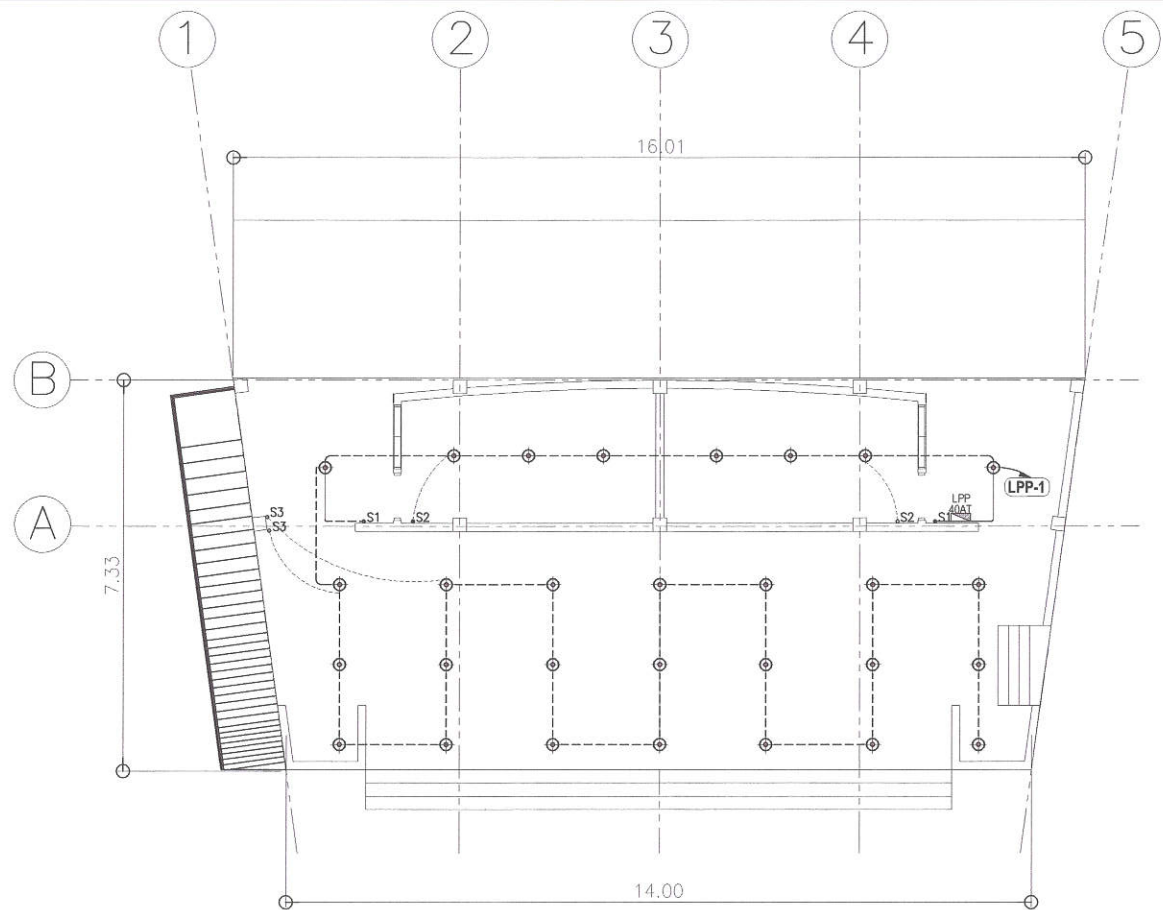
RECOMMENDING APPROVAL :
ENGR. ISAGANI R. VERZOSA, JR.
OIC, CITY ENGINEERING DEPARTMENT

APPROVED BY :
HON. MA. JOSEFINA G. BELMONTE
CITY MAYOR , QUEZON CITY

SHEET CONTENT
POWER LAYOUT PLAN

SHEET NO.
EL-02

20-00136







1 STAGE LIGHTING LAYOUT PLAN

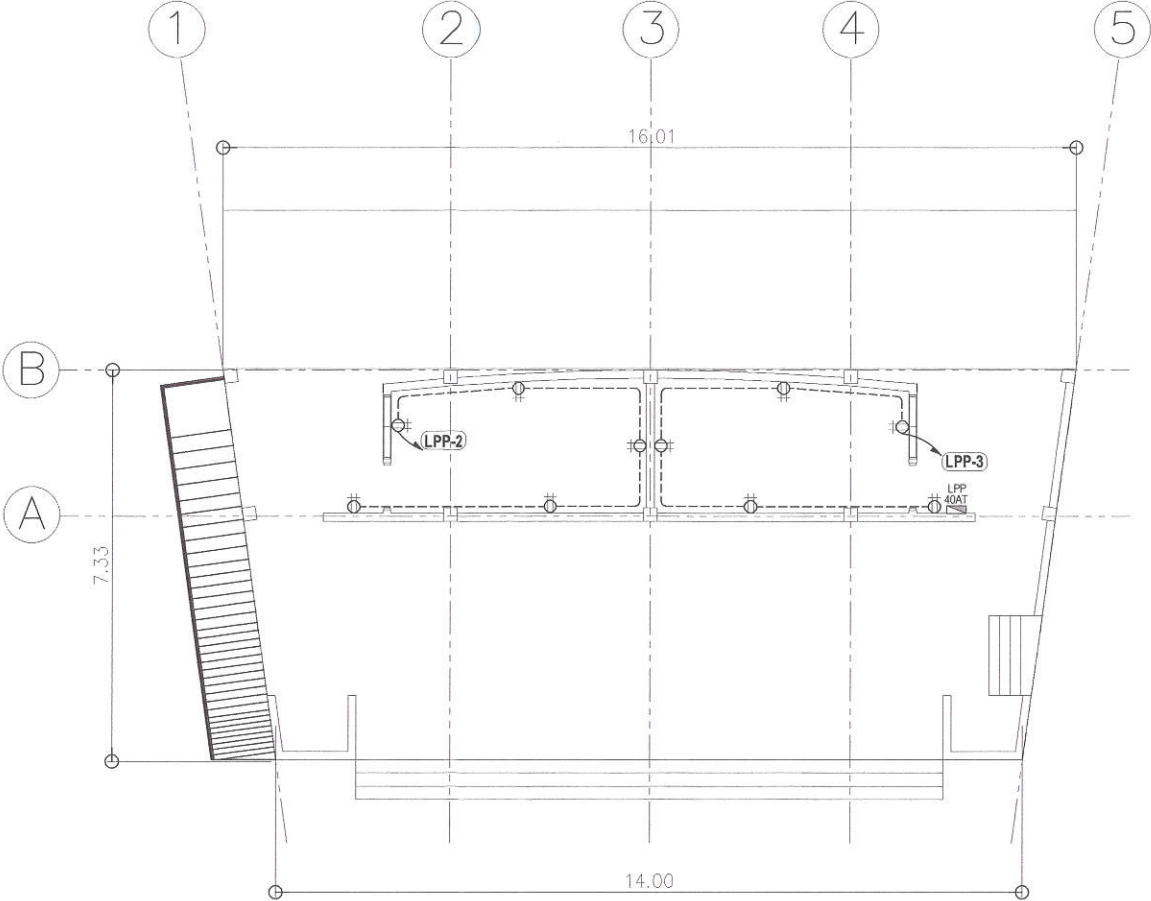
SCALE:1:100m.



Republika ng Pilipinas
Lungsod ng Quezon
CITY ENGINEERING DEPARTMENT

PROJECT TITLE :	DRAWN BY : mnmvbrgz	SUBMITTED BY :	RECOMMENDING APPROVAL :	APPROVED BY :	SHEET CONTENT	SHEET NO.
PROPOSED CONSTRUCTION OF STAGE AT RAMON MAGSAYSAY HIGH SCHOOL	DATE : OCT. 07, 2020	 ENGR. LITO S. DEL ROSARIO HEAD, PLANNING & PROGRAMMING DIVISION	 ENGR. ISAGANI R. VERZOSA, JR. OIC, CITY ENGINEERING DEPARTMENT	 HON. MA. JOSEFINA G. BELMONTE CITY MAYOR, QUEZON CITY	LIGHTING LAYOUT PLAN	EL-03
BARANGAY PALIGSAHAN, DISTRICT 4, QUEZON CITY	CHECKED BY : 					
	REVISION NO.:					

20-00136



1 STAGE POWER LAYOUT PLAN

SCALE:1:100m.



Republika ng Pilipinas
Lungsod ng Quezon
CITY ENGINEERING DEPARTMENT

PROJECT TITLE :	DRAWN BY : mmm/bgrz	SUBMITTED BY :	RECOMMENDING APPROVAL :	APPROVED BY :	SHEET CONTENT	SHEET NO.
PROPOSED CONSTRUCTION OF STAGE AT RAMON MAGSAYSAY HIGH SCHOOL	DATE : OCT. 07, 2020	CHECKED BY :	ENGR. ISAGANI R. VERZOSA, JR. OIC, CITY ENGINEERING DEPARTMENT	HON. MA. JOSEFINA G. BELMONTE CITY MAYOR, QUEZON CITY	POWER LAYOUT PLAN	EL-04
BARANGAY PALIGSAHAN, DISTRICT 4, QUEZON CITY	REVISION NO.:	ENGR. LEO S. DEL ROSARIO HEAD, PLANNING & PROGRAMMING DIVISION				