

TABLE OF CONTENTS	
ARCHITECTURAL	
AR-01	SITE DEVELOPMENT PLAN, VICINITY MAP, LOCATION PLAN
AR-02	GROUND FLOOR PLAN, SECOND FLOOR PLAN
AR-03	THIRD FLOOR PLAN, ROOF PLAN
AR-04	FRONT ELEVATION, RIGHT SIDE ELEVATION, REAR ELEVATION, LEFT SIDE ELEVATION
AR-05	CROSS SECTION, LONGITUDINAL SECTION, SCHEDULE OF DOORS & WINDOWS
AR-06	DETAIL OF STAIRCASE, SECTION OF STAIRCASE, HANDRAIL DETAIL, RISER & THREAD DETAIL
STRUCTURAL	
ST-01	FOUNDATION PLAN, SECOND FLOOR FRAMING PLAN
ST-02	THIRD FLOOR FRAMING PLAN, ROOF FRAMING PLAN
ST-03	GENERAL NOTES, SCHEDULE OF FOOTING, SCHEDULE OF COL U/L, TYPICAL CORSEL DETAIL, WALL FOOTING DETAIL, CONCRETE CANOPY DETAIL, GRADE BEAM DETAIL
ST-04	SCHEDULE OF BEAMS, TYPICAL BEAM DETAIL, TYPICAL SLAB DETAIL, SECTION OF TRUSS, DETAIL OF TRUSS, SEPTIC VAULT DETAIL
ELECTRICAL	
EL-01	GENERAL NOTES, LEGENDS & SYMBOLS, U-BOLT DETAIL, MCCB DETAIL, RISER DIAGRAM, PANEL BOARD DETAIL, SCHEDULE OF LOADS
EL-02	SITE DEVELOPMENT LAYOUT, SCHEDULE OF LOADS OF MCCB, GROUND FLOOR LIGHTING LAYOUT
EL-03	SECOND FLOOR LIGHTING LAYOUT, THIRD FLOOR LIGHTING LAYOUT
EL-04	GROUND FLOOR POWER LAYOUT, SECOND FLOOR POWER LAYOUT
EL-05	THIRD FLOOR POWER LAYOUT, GROUND FLOOR AIR CONDITIONING LAYOUT
EL-06	SECOND FLOOR AIR CONDITIONING LAYOUT, THIRD FLOOR AIR CONDITIONING LAYOUT
PLUMBING	
PL-01	GENERAL NOTES, LEGENDS & SYMBOLS, DETAIL OF PIPE SLEEVES, CATCH BASIN DETAIL, SEPTIC VAULT DETAIL, DECK DRAIN DETAIL
PL-02	GROUND FLOOR SANITARY & STORM DRAINAGE LAYOUT, TRENCH DETAIL
PL-03	THIRD FLOOR SANITARY & STORM DRAINAGE LAYOUT, SECOND FLOOR SANITARY & STORM DRAINAGE LAYOUT
PL-04	GROUND FLOOR WATERLINE LAYOUT, SECOND FLOOR WATERLINE LAYOUT
PL-05	THIRD FLOOR WATERLINE LAYOUT

REPUBLIC OF THE PHILIPPINES
Department of Public Works and Highways
Department of Transportation and Communications
Office of the Building Official

City / Municipality / Province

20-00144

LAND USE & ZONING

LINE & GRADE

ARCHITECTURAL

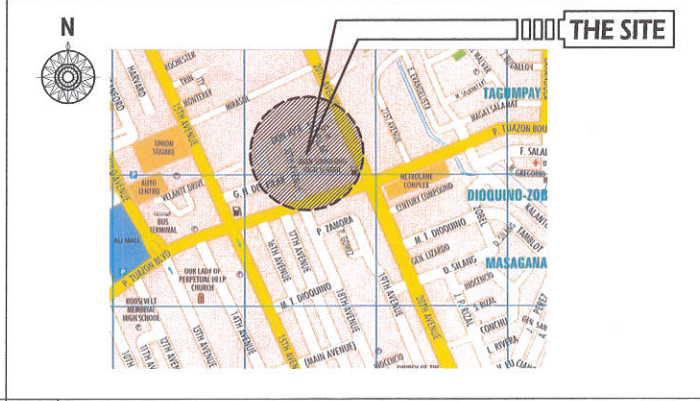
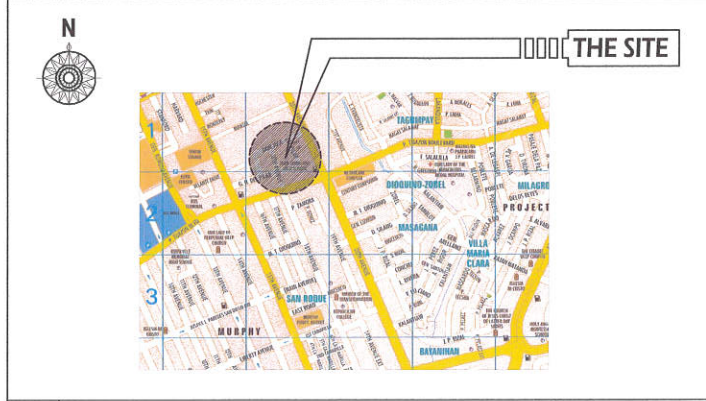
STRUCTURAL

ELECTRICAL

MECHANICAL

PLUMBING/SANITARY

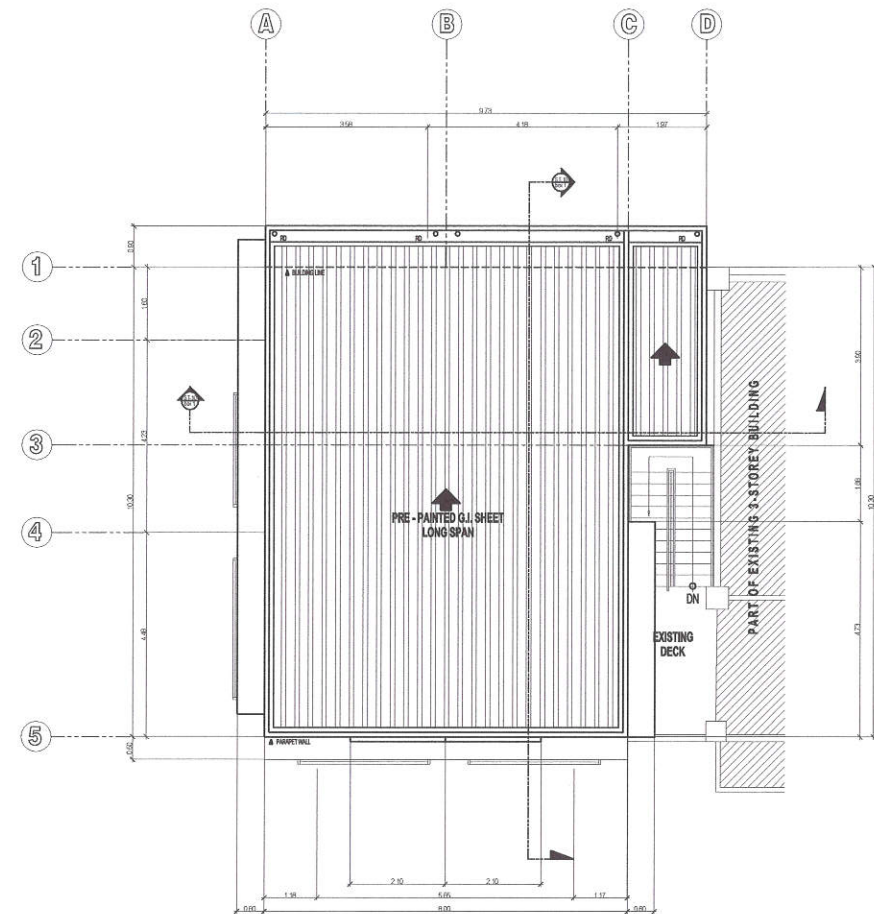
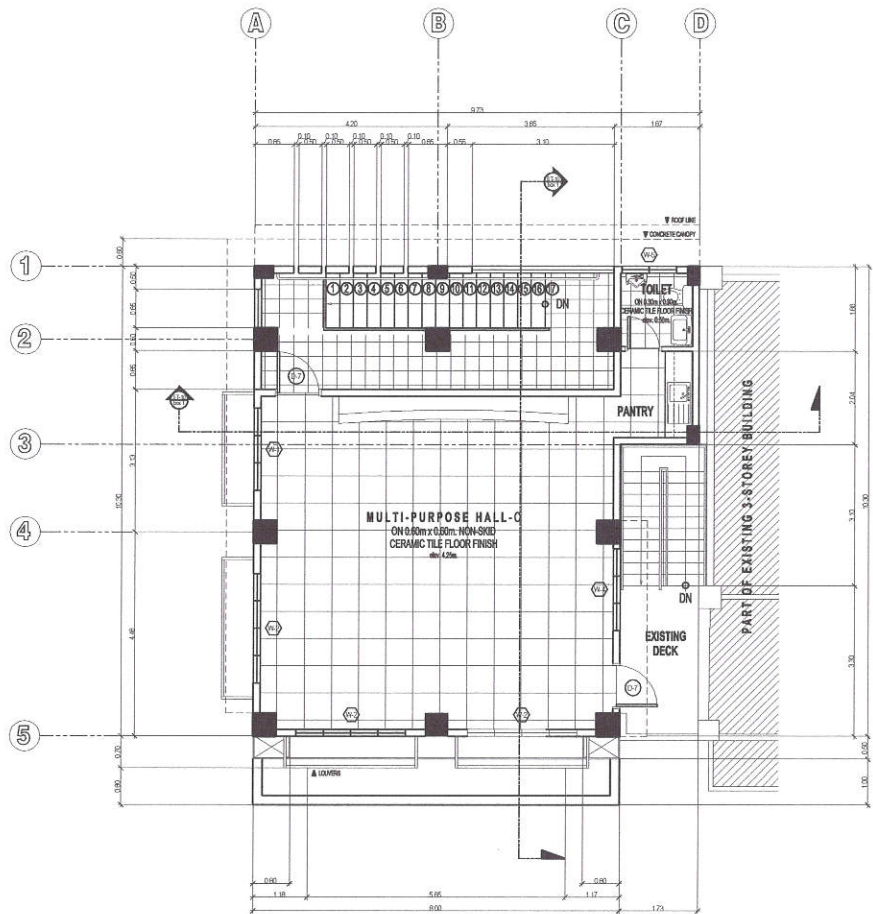
1 SITE DEVELOPMENT PLAN SCALE : NOT TO SCALE



2 VICINITY PLAN SCALE : NOT TO SCALE 3 LOCATION PLAN SCALE : NOT TO SCALE

<p>Republika ng Pilipinas Lungsod ng Quezon CITY ENGINEERING DEPARTMENT</p>	PROJECT TITLE:	DRAWN BY:	SUBMITTED BY:	RECOMMENDING APPROVAL:	APPROVED BY:	SHEET CONTENTS:	SHEET NO.
	PROPOSED CONSTRUCTION OF THREE (3)-STOREY MULTIPURPOSE HALL AND UPGRADING OF ELECTRICAL SYSTEM AT ALAN SUMULONG HIGH SCHOOL	DATE:	<p>ENGR. LEO S. DEL ROSARIO HEAD, PLUMBING & PROGRAMMING DIVISION</p>	<p>ENGR. ISAGANI R. VERZOSA, JR. CITY ENGINEERING DEPARTMENT</p>	<p>HON. MA. JOSEFINA G. BELMONTE CITY MAYOR, QUEZON CITY</p>	SITE DEVELOPMENT PLAN VICINITY MAP LOCATION PLAN	AR-01
	LOCATION: BARANGAY SAN ROQUE, DISTRICT 3, QUEZON CITY	CHECKED BY:					
	REVISION NO.:						

20-00144



1 THIRD FLOOR PLAN

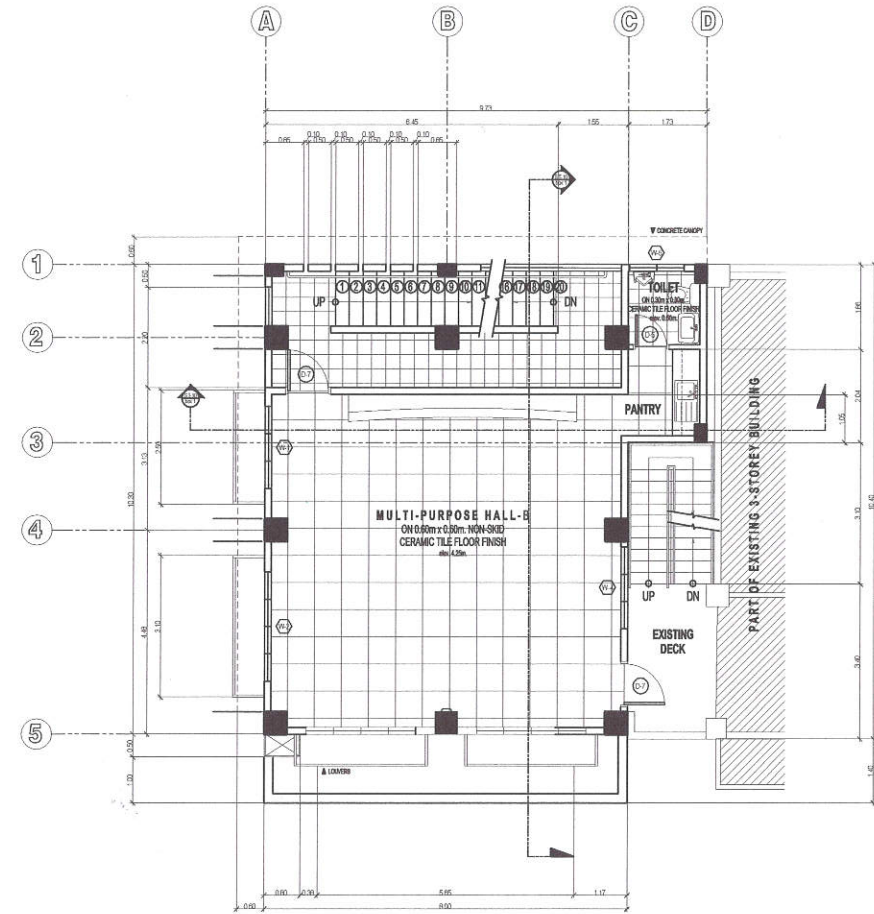
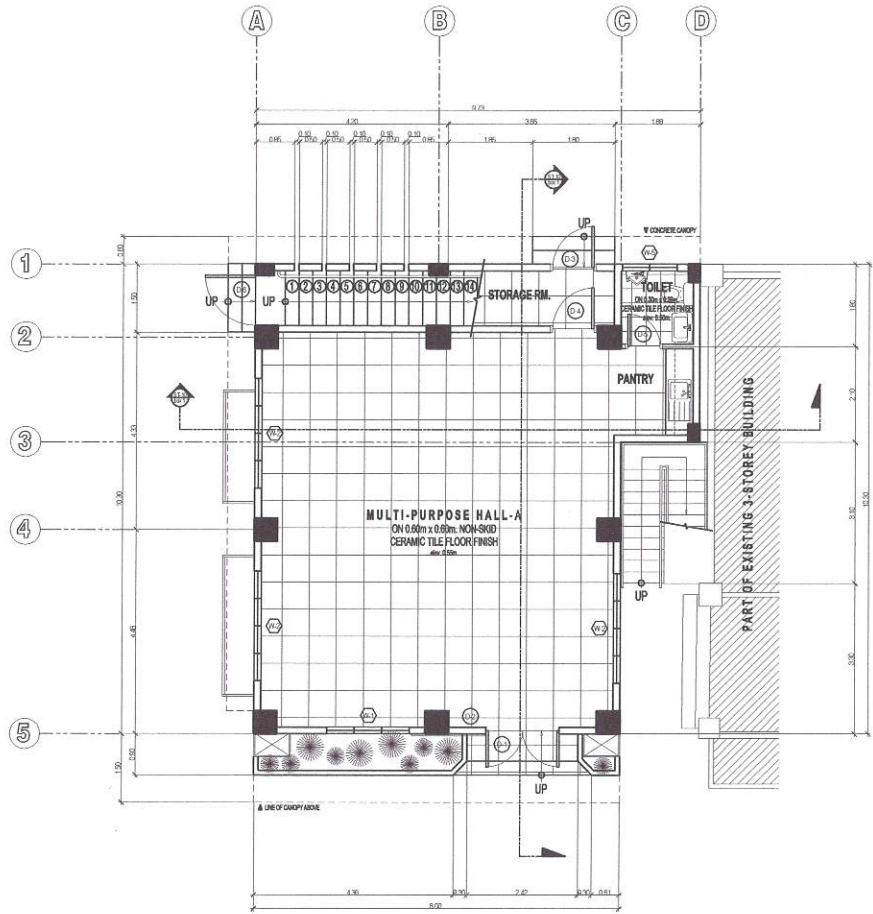
2 ROOF PLAN

SCALE 1:60 MTS

SCALE 1:60 MTS

 <p>Republika ng Pilipinas Lungsod ng Quezon CITY ENGINEERING DEPARTMENT</p>	<p>PROJECT TITLE: PROPOSED CONSTRUCTION OF THREE (3) STOREY MULTI-PURPOSE HALL AND UPGRADING OF ELECTRICAL SYSTEM AT PLAN SUMULONG HIGH SCHOOL</p>	<p>DESIGNED BY: ENGR. LEO L. DEL ROSARIO PLANNING & PROGRAMMING DIVISION</p>	<p>APPROVED BY: ENGR. MAGANI R. VERZOSA, JR. CE, CITY ENGINEERING DEPARTMENT</p>	<p>APPROVED BY: HON. MA. JOSEFINA G. BELMONTE CITY MAYOR, QUEZON CITY</p>	<p>SHEET CONTENTS: THIRD FLOOR PLAN ROOF PLAN</p>	<p>SHEET NO. AR-03</p>
	<p>LOCATION: BARANGAY SAN ROQUE, DISTRICT 3, QUEZON CITY</p>	<p>DATE: [Signature]</p>	<p>REVISIONS:</p>	<p>RECOMMENDING APPROVAL:</p>	<p>APPROVED BY:</p>	<p>SHEET NO.:</p>

20-00144



1 GROUND FLOOR PLAN

SCALE 1:60 MTS

2 SECOND FLOOR PLAN

SCALE 1:60 MTS



Republika ng Pilipinas
Lungsod ng Quezon
CITY ENGINEERING DEPARTMENT

PROJECT TITLE:
PROPOSED CONSTRUCTION OF THREE (3)-STOREY
MULTI-PURPOSE HALL AND UPGRADING OF
ELECTRICAL SYSTEM AT JUAN SUMULONG HIGH
SCHOOL

LOCATION: BARANGAY SAN ROQUE, DISTRICT 3, QUEZON CITY

DRAWN BY:
DATE:
CHECKED BY:
REVISION NO.:

SUBMITTED BY:

ENGR. LEO S. DEL ROSARIO
SENIOR ELECTRICAL ENGINEER

RECOMMENDING APPROVAL:

ENGR. ISAAC R. VERZOSA, JR.
CITY ENGINEERING DEPARTMENT

APPROVED BY:

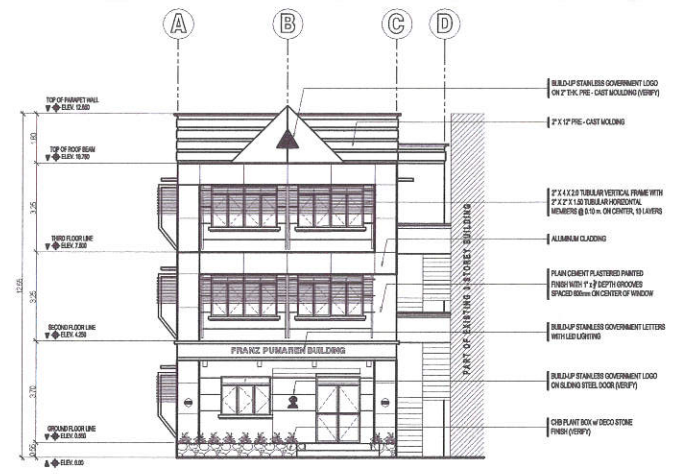
HON. MA. JOSEFINA G. BELMONTE
CITY ENGINEER, QUEZON CITY

SHEET CONTENTS:

GROUND FLOOR PLAN
SECOND FLOOR PLAN

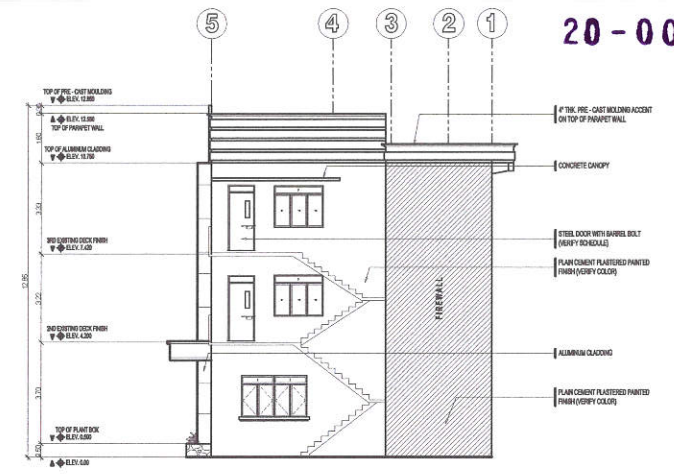
SHEET NO.

AR-02



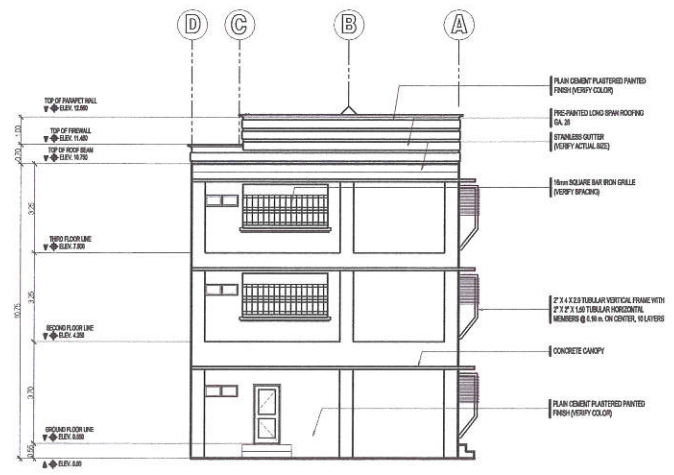
1 FRONT ELEVATION

SCALE 1:100 MTS



2 RIGHT SIDE ELEVATION

SCALE 1:100 MTS



3 REAR ELEVATION

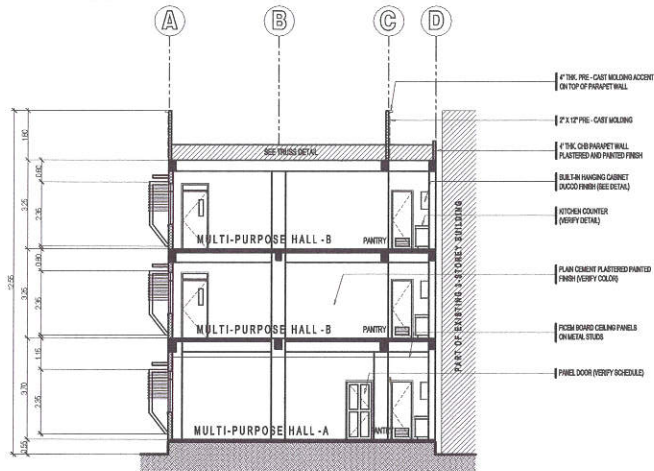
SCALE 1:100 MTS



4 LEFT SIDE ELEVATION

SCALE 1:100 MTS

 <p>Republika ng Pilipinas Lungsod ng Quezon CITY ENGINEERING DEPARTMENT</p>	PROJECT TITLE:	DESIGN BY:	SUBMITTED BY:	RECOMMENDING APPROVAL:	APPROVED BY:	SHEET CONTENTS:	SHEET NO.
	PROPOSED CONSTRUCTION OF THREE (3)-STOREY MULTIPURPOSE HALL AND UPGRADING OF ELECTRICAL SYSTEM AT JUAN SUMULONG HIGH SCHOOL	DATE:				FRONT ELEVATION RIGHT SIDE ELEVATION REAR ELEVATION LEFT SIDE ELEVATION	AR-04
	LOCATION: BARANGAY SAN ROQUE, DISTRICT 3, QUEZON CITY	DRAWN BY:	ENGR. LEO S. DEL ROSARIO HEAD OF PLANNING & PROGRAMMING DIVISION	ENGR. ISAAC R. VERZOSA, JR. HEAD OF ARCHITECTURE DIVISION	HON. MA. JOSEFINA G. BELMONTE CITY MAYOR, QUEZON CITY		
		CHECKED BY:					
	REVISION NO.:						



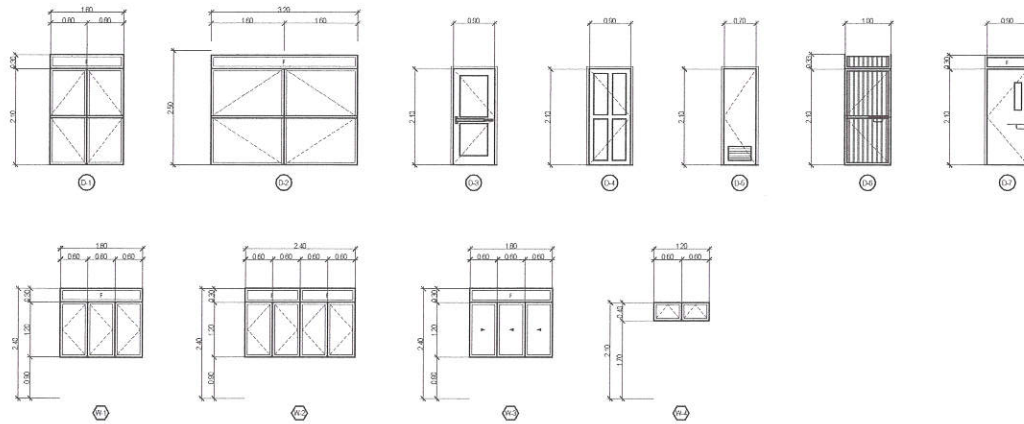
20-00144

1 CROSS SECTION

SCALE 1:100 MTS

2 LONGITUDINAL SECTION

SCALE 1:100 MTS

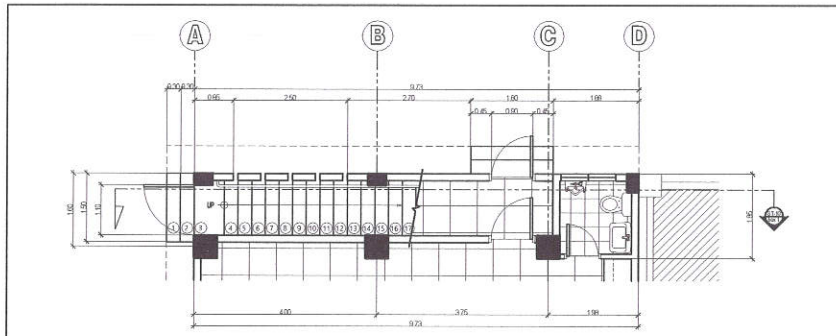


MARK	NO. OF UNITS	DESCRIPTION	LOCATION
(D1)	1 SET	DOUBLE E SWING GLASS DOOR ON ALUMINUM FRAMING w/ COMPLETE ACCESSORIES	GROUND FLOOR MAIN ENTRY
(D2)	1 SET	SLIDING STEEL DOOR w/ BARRIL BOLT LOCK AND COMPLETE ACCESSORIES	GROUND FLOOR MAIN ENTRY
(D3)	1 SET	METAL DOOR WITH FRANCHISE WIRE MESH	REAR SIDE ENTRY
(D4)	1 SET	PANEL DOOR w/ COMPLETE ACCESSORIES	STORAGE ROOM
(D5)	3 SETS	FLUSH DOOR WITH GLAZERS w/ COMPLETE ACCESSORIES	TOILET
(D6)	1 SET	STEEL DOOR: 2' x 4' x 3.0mm TUBULAR FRAME w/ 1\"/>	

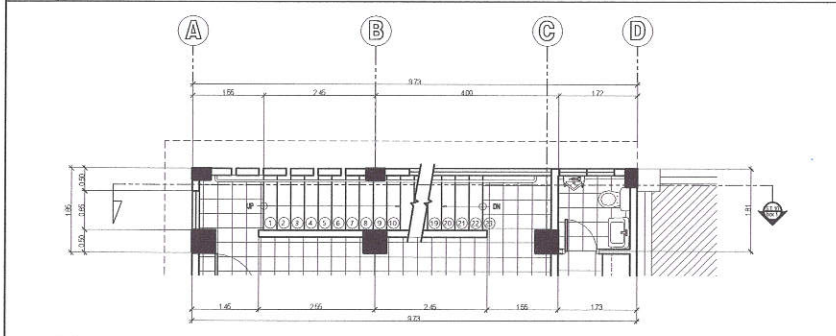
3 SCHEDULE OF DOORS & WINDOWS

SCALE 1:60 MTS

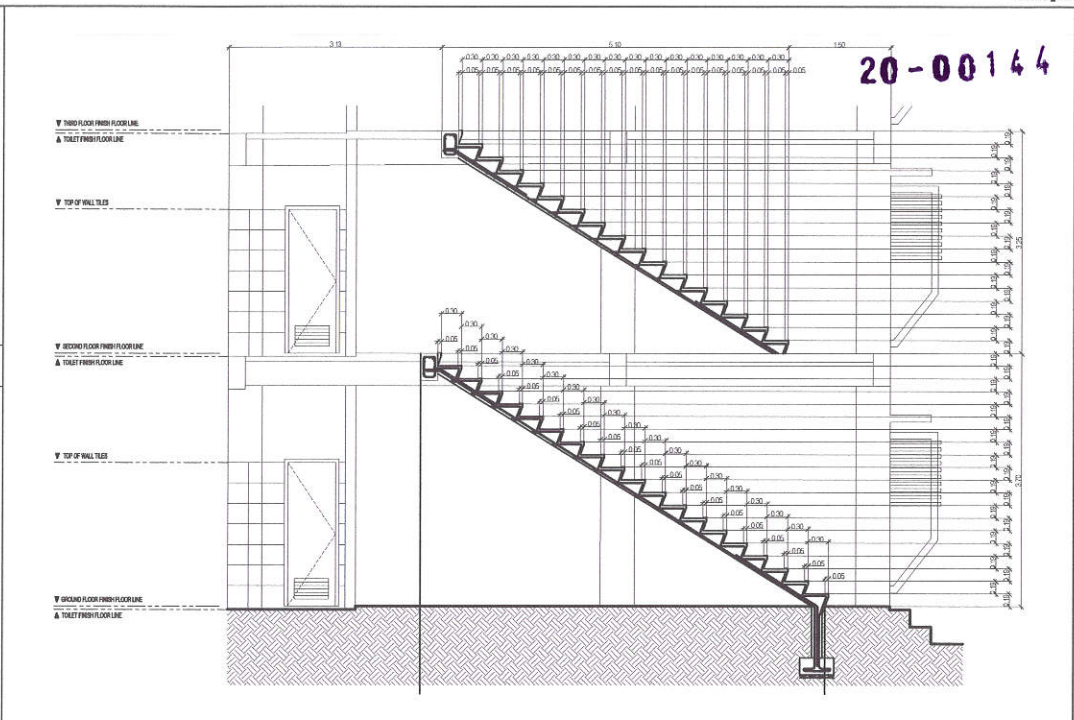
<p>Republika ng Pilipinas Lungsod ng Quezon CITY ENGINEERING DEPARTMENT</p>	<p>PROJECT TITLE: PROPOSED CONSTRUCTION OF THREE (3)-STOREY MULTI-PURPOSE HALL AND UPGRADING OF ELECTRICAL SYSTEM AT ALIAN SUMULONG HIGH SCHOOL</p>	<p>DESIGNED BY: </p>	<p>DATE: _____</p>	<p>RECOMMENDING APPROVAL: </p>	<p>APPROVED BY: </p>	<p>SHEET CONTENTS: CROSS SECTION LONGITUDINAL SECTION SCHEDULE OF DOORS & WINDOWS</p>	<p>SHEET NO. AR-05</p>
	<p>LOCATION: BARANGAY SAN ROQUE, DISTRICT 3, QUEZON CITY</p>	<p>REVISIONS: _____</p>	<p>ENGR. LEO A. DEL ROSARIO HEAD, PLANNING & PROGRAMMING DIVISION</p>	<p>ENGR. JERGANI R. VERZOSA, JR. CITY ENGINEERING DEPARTMENT</p>	<p>HON. MA. JOSEFINA G. BELMONTE CITY MAYOR, QUEZON CITY</p>		



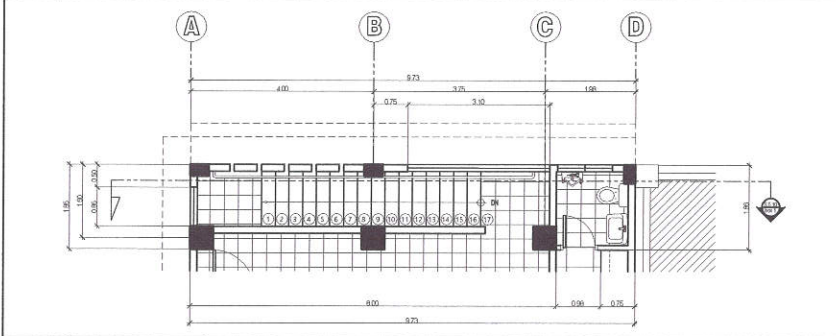
1 GROUND FLOOR STAIRCASE DETAIL SCALE 1:60 MTS



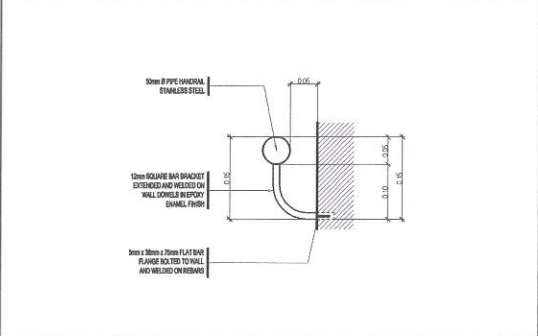
2 SECOND FLOOR STAIRCASE DETAIL SCALE 1:60 MTS



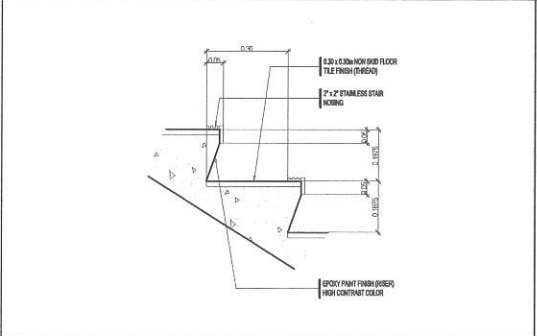
4 SECOND FLOOR STAIRCASE DETAIL SCALE 1:40 MTS



3 THIRD FLOOR STAIRCASE DETAIL SCALE 1:60 MTS



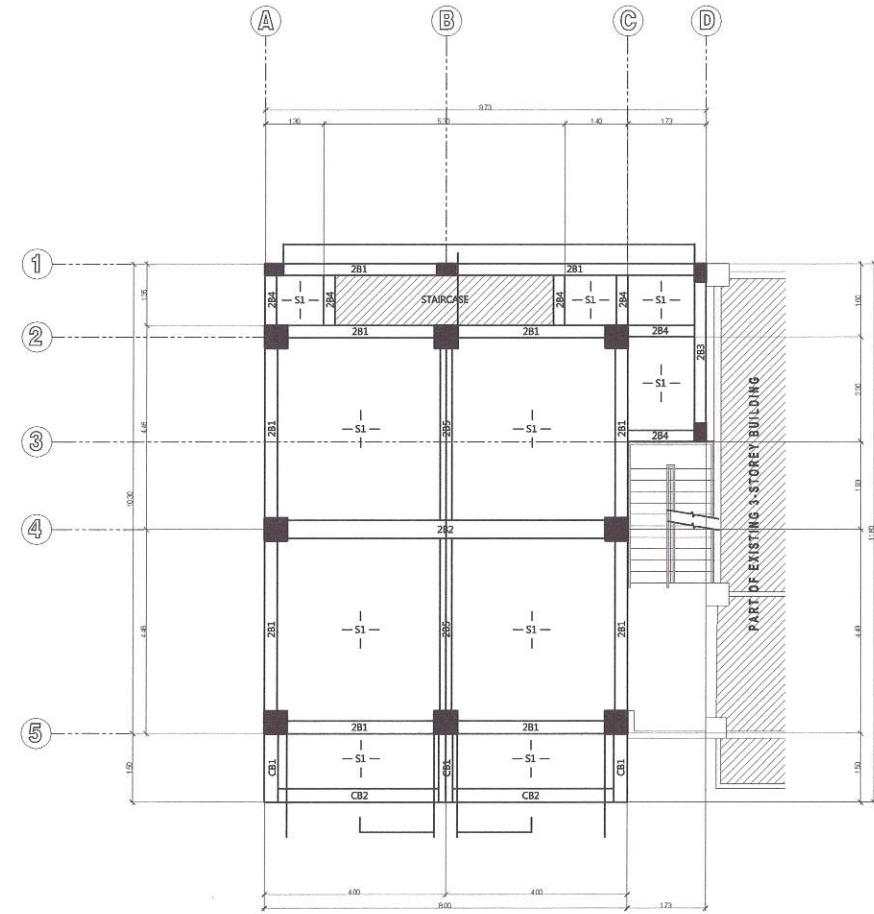
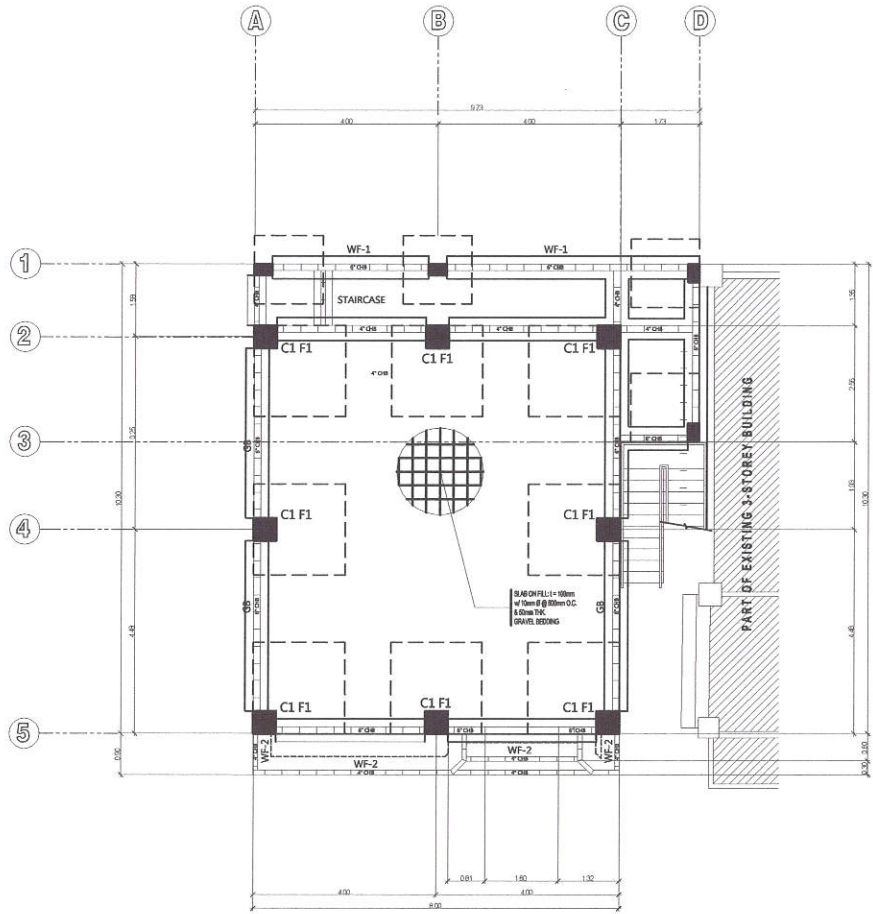
5 STAIRCASE HANDLE DETAIL SCALE 1:5 MTS



6 RISER & THREAD DETAIL SCALE 1:10 MTS

<p>Republika ng Pilipinas Lungsod ng Quezon CITY ENGINEERING DEPARTMENT</p>	PROJECT TITLE: PROPOSED CONSTRUCTION OF THREE (3)-STOREY MULTI-PURPOSE HALL AND UPGRADING OF ELECTRICAL SYSTEM AT JUAN SUMULONG HIGH SCHOOL	DRAWN BY: DATE: CHECKED BY:	SUBMITTED BY: 	RECOMMENDING APPROVAL: 	APPROVED BY: 	SHEET CONTENTS: STAIRCASE DETAIL STAIRCASE SECTION DETAIL STAIRCASE HANDLE DETAIL RISER & THREAD DETAIL	SHEET NO. AR-06
	LOCATION: BARANGAY SAN ROQUE, DISTRICT 3, QUEZON CITY	ENGR. LEO S. DEL ROSARIO HEAD, PLANNING & PROGRAMMING DIVISION	ENGR. JOSSANI R. VERZOSA, JR. CITY ENGINEERING DEPARTMENT	HON. MA. JOSPINA G. BELMONTE CITY MAYOR, QUEZON CITY			

20-00144



1 FOUNDATION PLAN

SCALE 1:60 MTS

2 SECOND FLOOR FRAMING PLAN

SCALE 1:60 MTS



Republika ng Pilipinas
Lungsod ng Quezon
CITY ENGINEERING DEPARTMENT

PROJECT TITLE:
PROPOSED CONSTRUCTION OF THREE (3)-STOREY
MULTIPURPOSE HALL AND UPGRADING OF
ELECTRICAL SYSTEM AT JUAN SUMULONG HIGH
SCHOOL
LOCATION: BARANGAY SAN ROQUE, DISTRICT 3, QUEZON CITY

DRAWN BY:
DATE:
CHECKED BY: [Signature]
REVISION NO.:

SUBMITTED BY: [Signature]
ENGR. LEO S. DEL ROSARIO
HEAD TRAINING & PROGRAMMING DIVISION

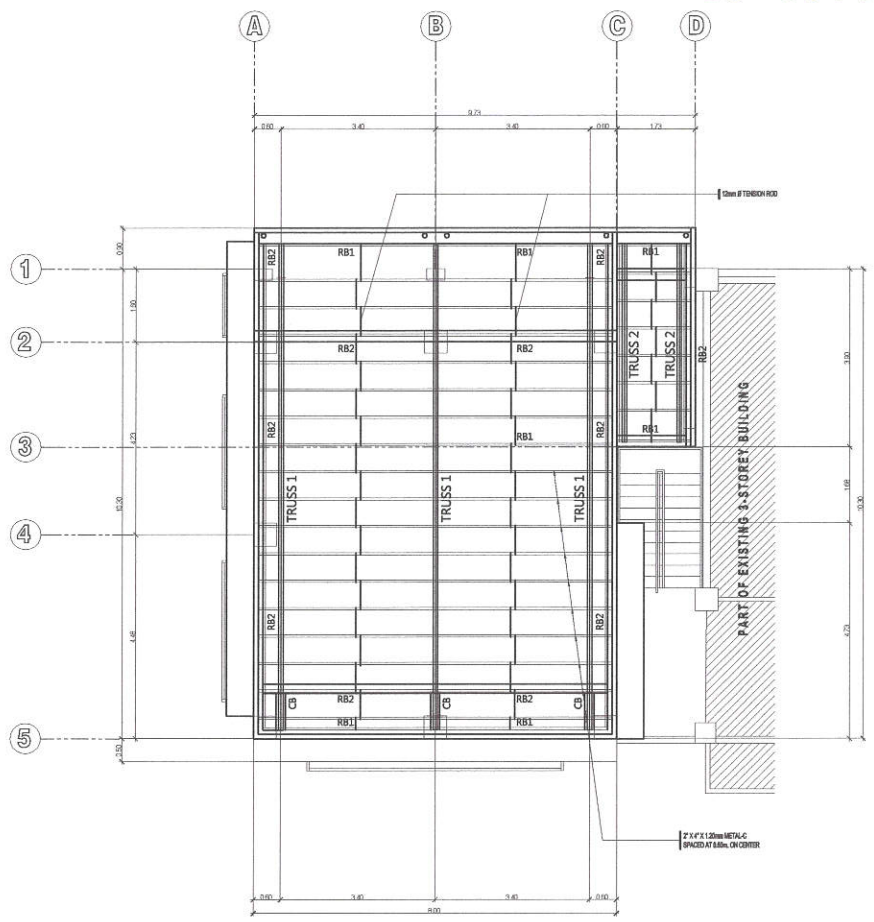
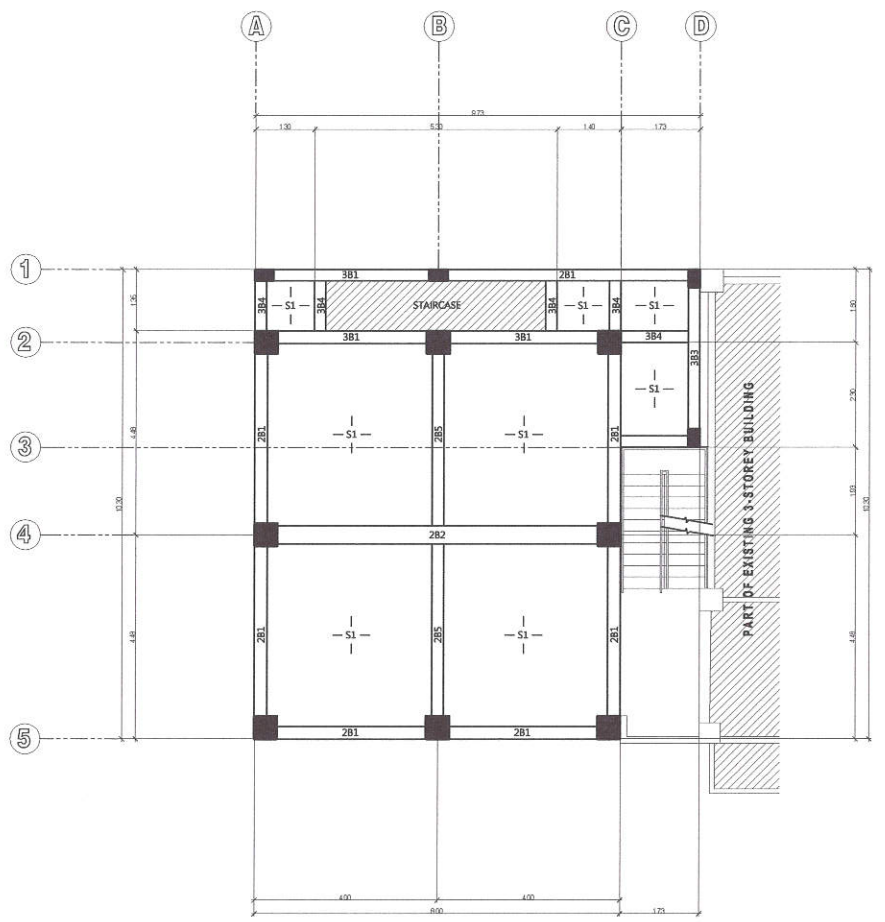
RECOMMENDING APPROVAL: [Signature]
ENGR. ISAPANI R. VERZOSA, JR.
CITY ENGINEERING DEPARTMENT

APPROVED BY: [Signature]
HON. MA. JOSEFINA G. BELMONTE
CITY MAYOR, QUEZON CITY

SHEET CONTENTS:
FOUNDATION PLAN
SECOND FLOOR FRAMING PLAN

SHEET NO.
ST-01

20-00144



1 THIRD FLOOR FRAMING PLAN SCALE 1:60 MTS **2 ROOF FRAMING PLAN** SCALE 1:60 MTS

 <p>Republika ng Pilipinas Lungsod ng Quezon CITY ENGINEERING DEPARTMENT</p>	<p>PROJECT TITLE: PROPOSED CONSTRUCTION OF THREE (3)-STOREY MULTIPURPOSE HALL AND UPGRADING OF ELECTRICAL SYSTEM AT JUAN SUMILONG HIGH SCHOOL</p>	<p>DRAWN BY: DATE: CHECKED BY: <i>[Signature]</i> REVISION NO.:</p>	<p>SUBMITTED BY: <i>[Signature]</i> ENGR. LEO S. DEL ROSARIO HEAD, PLANNING & PROGRAMMING DIVISION</p>	<p>RECOMMENDING APPROVAL: <i>[Signature]</i> ENGR. ISAGANI R. VERZOSA, JR. CITY ENGINEERING DEPARTMENT</p>	<p>APPROVED BY: <i>[Signature]</i> HON. MA. JOSEFINA G. BELMONTE CITY MAYOR, QUEZON CITY</p>	<p>SHEET CONTENTS: THIRD FLOOR FRAMING PLAN ROOF FRAMING PLAN</p>	<p>SHEET NO. ST-02</p>
	<p>LOCATION: BARANGAY SAN ROQUE, DISTRICT 3, QUEZON CITY</p>						

20-00144

GENERAL

- CONSTRUCTION NOTES AND TYPICAL DETAILS APPLY TO ALL DRAWINGS UNLESS OTHERWISE SHOWN OR NOTED. MODIFY TYPICAL DETAILS AS DIRECTED TO MEET SPECIAL CONDITIONS.
- SHOP DRAWINGS WITH ERECTION AND FLUORINATION DIAGRAM OF ALL STRUCTURAL FOR ENGINEER'S APPROVAL BEFORE PROCEEDING.
- CONTRACTOR SHALL VERIFY ALL DIMENSIONS BEFORE ALL WORK TO BE ON-DECK WITH MECHANICAL AND ELECTRICAL CONTRACTORS FOR CONDUITS, PIPE RISES, ETC. TO BE EMBEDDED IN CONCRETE.
- IT SHALL BE THE CONTRACTOR'S RESPONSIBILITY TO PROVIDE ADEQUATE SHORING AND BRACING OF THE STRUCTURE FOR ALL LOADS THAT MAY BE APPLIED DURING CONSTRUCTION.
- IN CASE OF QUESTION ARISING FROM THE INTERPRETATION OF ANY CLAUSE WITH OTHER DOCUMENTS, THE ATTENTION OF THE OWNER/ENGINEER SHALL BE CALLED FOR.

CONCRETE & REINFORCEMENT

- ALL MATERIALS AND WORKMANSHIP SHALL CONFORM WITH THE LATEST BUILDING CODE OF AMERICAN CONCRETE INSTITUTE (ACI 318).
- ALL CONCRETE SHALL DEVELOP A MINIMUM COMPRESSIVE STRENGTH AT THE END OF TWENTY (20) DAYS WITH CORRESPONDING MINIMUM SIZE AGGREGATE AND SLUMPS AS FOLLOWS:

LOCATION	STRENGTH	MAX. SIZE OF AGGREGATES	MAX. SLUMP
a. SLAB ON GRADE, CURBS, PARAPETS, FOOTING, WALL FOOTING	3000 PSI (20.68 MPa)	1 in (25mm)	4 in (100mm)
b. BEAMS, COLUMNS, SUSPENDED SLAB	3000 PSI (20.68 MPa)	3/4 in (19mm)	4 in (100mm)
c. FAN CONCRETE	2500 PSI (17.24 MPa)	1 in (25mm)	4 in (100mm)

- REINFORCING BARS SHALL CONFORM TO ASTM A630 FOR 12mm Ø AND SMALLER BARS AND GRADE 415 FOR 16mm Ø AND LARGER BARS.
- IN GENERAL, THE LATEST EDITION OF A.C.I.'S MANUAL OF STANDARD PRACTICE DETAILING REINFORCED CONCRETE STRUCTURES SHALL BE ADHERED TO UNLESS OTHERWISE SHOWN OR NOTED.
- MAINTAIN MINIMUM CONCRETE COVER FOR REINFORCING STEEL AS FOLLOWS:

CONCRETE	CURING
FOUNDATION	24 HRS
SUSPENDED SLAB EXCEPT WHEN ADDITIONAL LOADS ARE IMPOSED	8 DAYS
FREESTANDING COLUMNS, WALLS	2 DAYS
BEAMS	21 DAYS

- DEVELOPMENT LENGTH FOR ALL BARS SHALL BE A MINIMUM OF 60 BAR DIAMETER UNLESS OTHERWISE NOTED.

STRUCTURAL STEEL AND PLATES

- ALL STRUCTURAL STEEL SHALL CONFORM TO ASTM A36 SPECIFICATIONS WITH MINIMUM YIELD STRENGTH $f_y = 250$ MPa.
- ANCHOR & FASTENER BOLTS, ALL BOLTS SHALL CONFORM TO ASTM A307 SPECIFICATIONS.
- WELDING RODS, ALL WELDING RODS SHALL BE M10 STEEL ELECTRODE, LOW HYDROGEN TYPE WITH MINIMUM YIELD STRENGTH = 400 MPa.

FOUNDATION

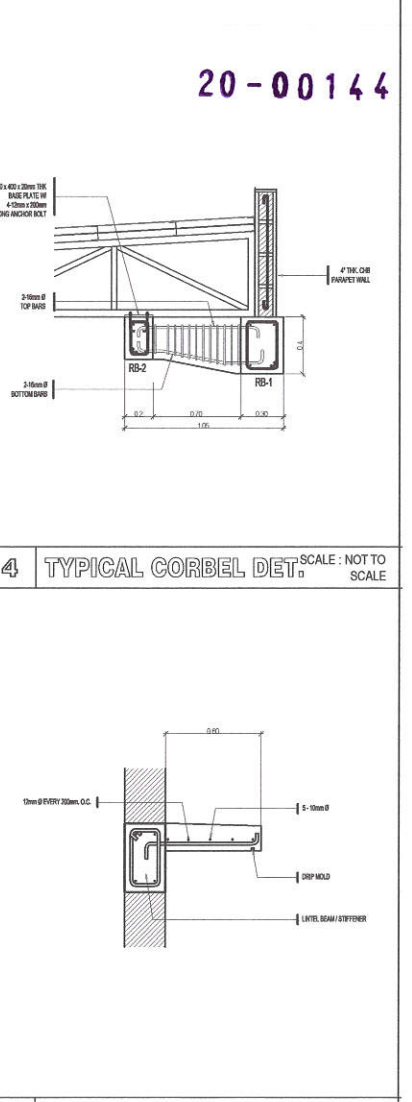
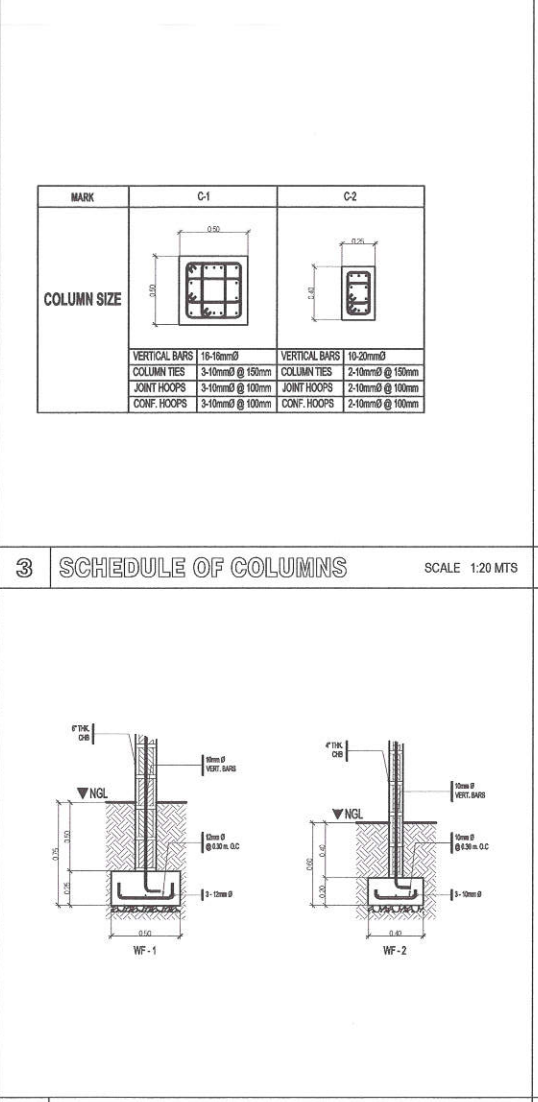
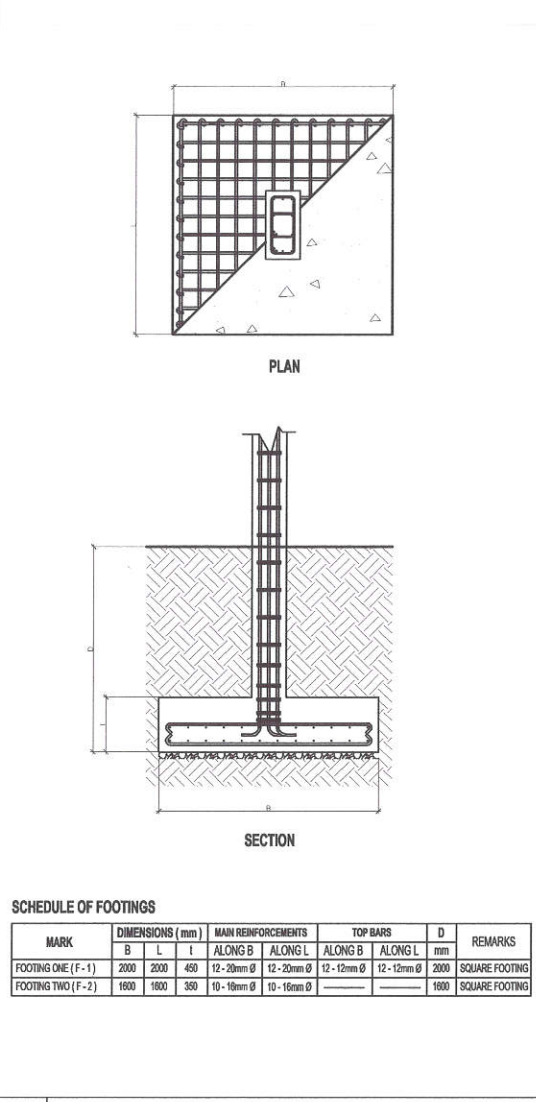
FOUNDATION IS DESIGNED BASED ON NATIONAL BUILDING CODE OF THE PHILIPPINES FOR ALLOWABLE SOIL BEARING CAPACITY OF 400 kPa.

- FOUNDATION SHALL REST ON NATURAL SOIL, UNLESS OTHERWISE NOTED BY THE ENGINEER, AND PART OF THE FOUNDATION SHALL REST ON IT.
- THE CONTRACTOR SHALL NOTIFY THE ENGINEER UPON COMPLETION OF FOUNDATION INVESTIGATION FOR ACTUAL SOIL CONDITIONS WHICH DO NOT CONFORM TO THE SOIL BEARING CAPACITY FOR PROPER DESIGN.

MASONRY WALLS

- ALL MATERIALS & WORKMANSHIP SHALL BE IN ACCORDANCE WITH THE APPLICABLE STANDARD & SPECIFICATIONS OF THE STRUCTURAL CODE OF THE PHILIPPINES & INTERNATIONAL CODE.
- MORTAR & GROUT FOR ALL CONCRETE MASONRY SHALL CONFORM TO ASTM 1138. TYPE III SHALL HAVE A MINIMUM OF 28 DAYS STANDARD CYLINDER COMPRESSIVE STRENGTH OF 17.5 MPa (5000 PSI).
- ALL CHASES SHALL BE FILLED UP WITH THE CELLS IN UNREINFORCED MORTAR, CONCRETE. ALL CELLS ESPECIALLY THOSE WITH REINFORCEMENT SHALL BE FILLED WITH MORTAR.
- REINFORCEMENT, AS TABULATED BELOW SHALL BE PROVIDED UNLESS OTHERWISE SPECIFIED IN THE PLAN.
- ALL MASONRY WALLS SHALL BE PROVIDED WITH STIFFENER BEAM BLOCK & STIFFENER AS REQUIRED.
 - FOR HIGH WALLS & EVERY 3RD M & COLUMN B.L. AT 3RD M FROM GROUND.
 - FOR DOORS & WINDOWS OPENINGS PROVIDE L INTEL BEAM SAME AS STIFFENER BEAM BLOCK.

Ø REINFORCEMENTS		NOTES
BLOCK THICKNESS (mm)	REINFORCEMENTS	
100	10mm Ø WIRE @ 200mm VERTICAL LAYER OF 2 @ 1	A. MIN LAP SPACES - 200mm LONG.
125	10mm Ø WIRE @ 200mm VERTICAL LAYER OF 2 @ 1	B. PROVIDE BEAM ASSET REINFORCEMENT @ CORNERS.



1 GENERAL NOTES

Republika ng Pilipinas
Lungsod ng Quezon
CITY ENGINEERING DEPARTMENT

2 SCHEDULE OF FOOTING SCALE: 1:20 MTS

PROJECT TITLE: PROPOSED CONSTRUCTION OF THREE (3)-STOREY MULTIPURPOSE HALL AND UPGRADING OF ELECTRICAL SYSTEM AT ILAN SUMULUNG HIGH SCHOOL

LOCATION: BARANGAY SAN ROQUE, DISTRICT 3, QUEZON CITY

DESIGNED BY: ENGR. LEO S. DEL ROSARIO
HEAD OF DIVISION & REGISTERED ENGINEER

5 WALL FOOTING DETAIL SCALE: 1:20 MTS

RECOMMENDING APPROVAL: ENGR. MAGANI R. VERZOSA, JR.
CITY ENGINEERING DEPARTMENT

6 CONC. CANOPY DET. SCALE: NOT TO SCALE

APPROVED BY: HON. MA. JOSEFINA G. BELMONTE
CITY ENGINEER, QUEZON CITY

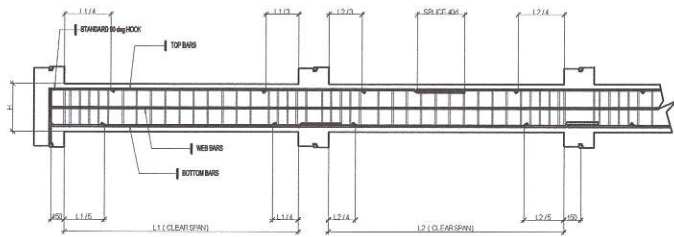
SHEET CONTENTS: GENERAL NOTES, SCHEDULE OF FOOTINGS, SCHEDULE OF COLUMNS, TYPICAL CORBEL DETAIL, WALL FOOTING DETAIL, CONC. CANOPY DETAIL, GRADE BEAM DETAIL

SHEET NO. **ST-03**

BEAM MARK	DIMENSIONS (MM)		BAR Ø	TOP BARS			BOTTOM BARS			WEB BARS	STIRRUPS 10mm Ø
	B	H		LEFT SUPPORT	MID SPAN	RIGHT SUPPORT	LEFT SUPPORT	MID SPAN	RIGHT SUPPORT		
2ND & 3RD FLOOR											
B1	300	450	16	6	2	6	2	6	2	2-10	1 @ 50, 4 @ 100, REST @ 200
B2	400	600	16	8	3	8	3	8	3	2-10	1 @ 50, 4 @ 100, REST @ 200
B3	250	400	16	5	2	5	2	5	2	2-10	1 @ 50, 4 @ 100, REST @ 200
B4	200	350	16	3	2	3	2	3	2	2-10	1 @ 50, 4 @ 100, REST @ 200
CB1	300	400	16	6	2	6	2	6	2	2-10	1 @ 50, 4 @ 100, REST @ 200
ROOF BEAM											
RB1	300	400	16	4	2	4	2	4	2	2-10	1 @ 50, 4 @ 100, REST @ 200
RB2	200	300	16	3	2	3	2	3	2	2-10	1 @ 50, 4 @ 100, REST @ 200
SEPTIC TANK											
B1	150	300	16	2	2	2	2	2	2	2-10	1 @ 50, 4 @ 100, REST @ 200

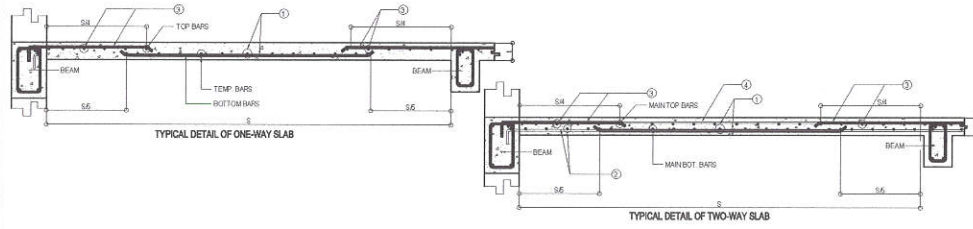


1 SCHEDULE OF BEAMS



2 TYPICAL BEAM DETAIL

SCALE : NOT TO SCALE



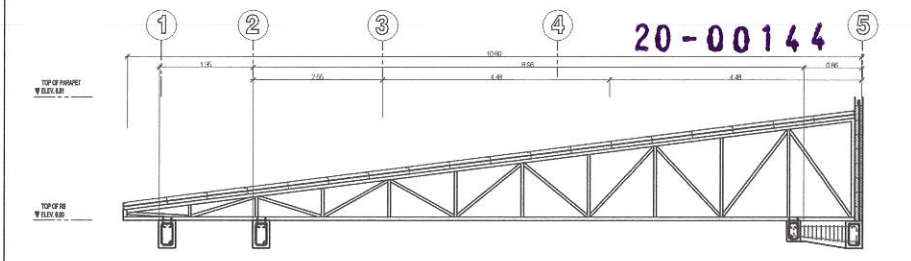
MARK	I	REINFORCEMENT		SHORT SPAN		LONG SPAN		REMARK				
		MAIN BARS	TEMP.	TOP BARS	BOT. BARS	TOP BARS	BOT. BARS					
				4	3	1	2		4	3	1	2
S-1	100	12	12	300	150	150	300	300	150	150	300	TWO-WAY SLAB

3 TYPICAL SLAB DETAIL

SCALE : NOT TO SCALE

6 SEPTIC VAULT DETAIL

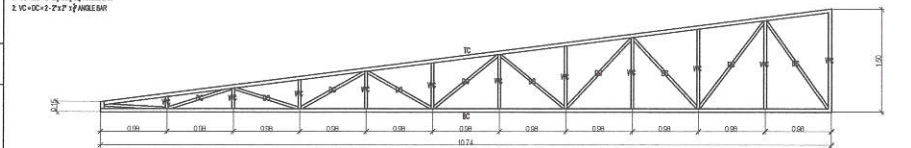
SCALE : NOT TO SCALE



4 ROOF SECTION

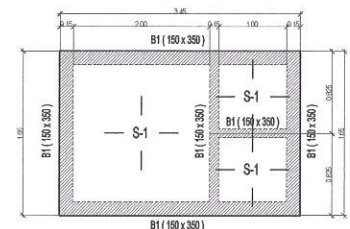
SCALE 1:40 MTS

NOTE:
1. VC-10-1-2-1-2-2 ANGLE BAR
2. VC-10-2-2-1-2 ANGLE BAR

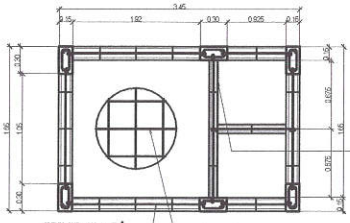


5 TRUSS DETAIL

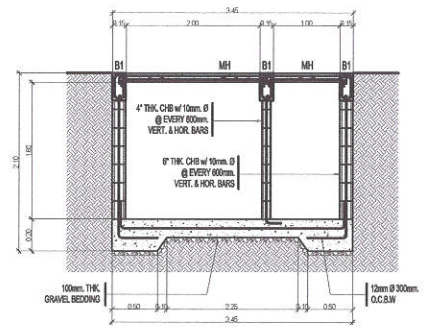
SCALE 1:40 MTS



FRAMING PLAN OF SEPTIC TANK



FOUNDATION PLAN OF SEPTIC TANK



SECTION OF SEPTIC TANK



 Republika ng Pilipinas
 Lungsod ng Quezon
CITY ENGINEERING DEPARTMENT

PROJECT TITLE:
 PROPOSED CONSTRUCTION OF THREE (3)-STOREY
 MULTIPURPOSE HALL AND UPGRADING OF
 ELECTRICAL SYSTEM AT JUAN SUMILONG HIGH
 SCHOOL
LOCATION: BARANGAY SAN ROQUE, DISTRICT 3, QUEZON CITY

DESIGN BY:
 DATE:
CHECKED BY:
REVISIONS:


ENGR. LEO S. DEL ROSARIO
 1000 PLANNING & PROGRAMMING DIVISION

RECOMMENDING APPROVAL:
APPROVED BY:


ENGR. SAGAMIR R. VERZOSA, JR.
 1000 CITY ENGINEERING DEPARTMENT

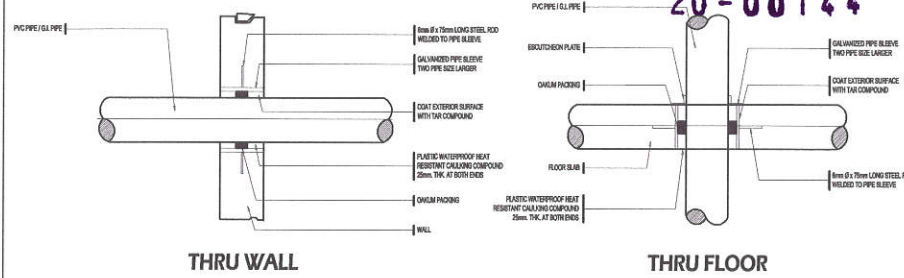
APPROVED BY:
HON. MA. JOSEFINA G. BELMONTE
 CITY MAYOR, QUEZON CITY

SHEET CONTENTS:
 SCHEDULE OF BEAMS
 TYPICAL BEAM DETAIL
 TYPICAL SLAB DETAIL
 ROOF SECTION
 TRUSS DETAIL
 SEPTIC VAULT DETAIL

SHEET NO.
ST-04

- ALL PLUMBING WORKS SHALL BE EXECUTED IN ACCORDANCE WITH THE LATEST PROVISION OF THE PHILIPPINE PLUMBING CODE, THE UNIFORM PLUMBING CODE, THE NATIONAL BUILDING CODE, AND THE RULES AND REGULATIONS OF THE QUEZON CITY.
- ALL SLOPES FOR SANITARY AND STORM DRAINAGE LINES SHALL MAINTAIN A ONE PERCENT (0.01) AND ONE-HALF (0.005) MIN. RESPECTIVELY UNLESS OTHERWISE SPECIFIED.
- PROPOSED SANITARY UTILITIES SHALL CONFORM TO ACTUAL LOCATION, DEPTH AND INVERT ELEVATION OF ALL EXISTING PIPES & STRUCTURES.
- ALL WATER SUPPLY PIPES & DRAIN SIZES OF FIXTURES SHALL BE IN ACCORDANCE WITH THE MANUFACTURERS RECOMMENDATION.
- TESTING OF SANITARY AND WATERLINES SHALL CONFORM TO THE LATEST REQUIREMENTS OF PHILIPPINE PLUMBING CODE AND UNIFORM PLUMBING CODE.
- ALL PIPES SIZES AND DIMENSIONS ARE IN MILLIMETER UNLESS OTHERWISE SPECIFIED.
- WATERLINE SHALL BE PPR TYPE OR FUSION WELD TYPE.
- SOIL PIPE, WASTE & VENT SHALL BE PVC SANIMOLD EXTRA OR APPROVED EQUAL. STORM DRAINAGE LINE 200mm Ø AND BELOW SHALL BE POLYVINYL CHLORIDE. 250mm Ø AND ABOVE SHALL BE REINFORCED CONCRETE PIPE.
- GATE VALVE SHALL BE PPR TYPE.
- WATER METER SHALL BE ANY BRAND APPROVE BY MWSS.
- ROOF DRAIN SHALL BE ASA 10-12, PIPE SIZE 4" Ø BY ASA METAL OR APPROVED EQUAL.
- WATER CLOSETS SHALL BE VITREOUS CHINA, FREE STANDING TOILET COMBINATION, ROUND FRONT BOTTOM OUTLET SIPHON VORTEX OR WASH-DOWN BOWL WITH EXTENDED REAR SELF AND CLOSE COUPLED TANK WITH COVER COMPLETE WITH FITTING AND MOUNTING ACCESSORIES.
- LAVATORY SHALL BE VITREOUS CHINA, WALL HUNG WITH REAR OVERFLOW AND CAST IN SOAP DISHES, POCKET HANGER WITH INTEGRAL CHINA BRACKET, COMPLETE WITH TWIN FAUCETS, SUPPLY PIPES, P-TRAP AND MOUNTING ACCESSORIES.
- WHERE INDICATED ON PLANS, THE COUNTER TOP MODEL MAKE AND COLOR SHALL BE APPROVED BY THE DESIGNING ARCHITECT.
- URINAL SHALL BE VITREOUS CHINA, WALL HUNG WASH-OUT URINAL WITH EXTENDED SHIELDS AND INTEGRAL FLUSH SPREADER, CONCEALED WALL HANGER POCKETS, 19mm TOP SPUD COMPLETE FITTING AND MOUNTING ACCESSORIES. MODEL MAKE AND COLOR SHALL BE APPROVED BY THE DESIGNING ARCHITECT.
- GRAB BARS SHALL BE MADE OF TUBULAR STAINLESS STEEL PIPE PROVIDED WITH SAFETY GRIP AND MOUNTING FLANGE.
- FLOOR DRAINS SHALL BE MADE OF STAINLESS BEEHIVE TYPE, MEASURING 100mm x 100mm AND PROVIDED WITH DETACHABLE STAINLESS STRAINER, EXPANDED METAL LATH TYPE.
- SOAP HOLDER SHALL BE VITREOUS CHINA WALL MOUNTED. COLOR SHALL RECONCILE WITH ADJACENT TILE WORKS.
- TOILET PAPER HOLDERS SHALL BE VITREOUS CHINA WALL MOUNTED. COLOR SHALL RECONCILE WITH THE ADJACENT FIXTURE AND FACING TILES.
- FAUCETS SHALL BE MADE OF STAINLESS STEEL FOR INTERIOR USE.
- HOSE BIB SHALL BE MADE OF BRONZE CAST FINISH.

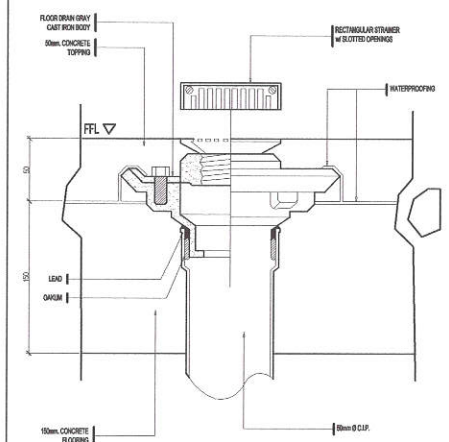
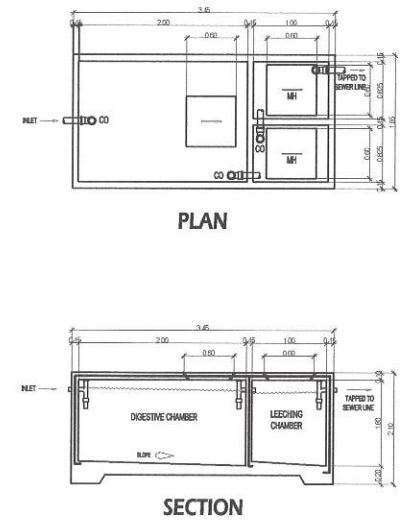
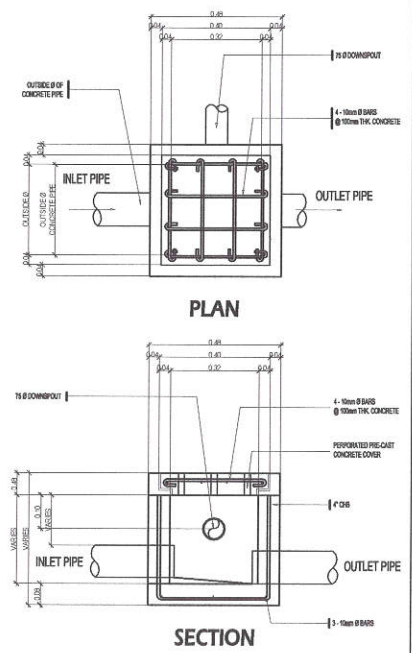
URINAL PATENT	DD	DECK DRAIN
CHECK VALVE	UR	URINAL
SSK	BL	GATE VALVE
BS	BS	WATERMETER
BD	PVC	POLYVINYL CHLORIDE
PT	WC	WATER CLOSET
AD/CB	LAV	LAVATORY
WASTE LINE	SP	SOIL PIPE
WATERLINE	MH	MANHOLE
GATE VALVE	GCO	GROUND CLEAN OUT
PIPE DOWN	FCO	FLOOR CLEAN OUT
PIPE UP	FD	FLOOR DRAIN
END CAP	Ø	DIAMETER
DIRECTION OF FLOW/SLOPE	TP	TRANSFER PUMP
HOSE BIB	SS	SOIL STACK
STORM DRAINLINE	VS	VENT STACK
VENT LINE	VTR	VENT THRU ROOF
LEDGE DRAIN	FS	FLOW SWITCH



2 LEGEND & SYMBOLS

3 DETAIL OF PIPE SLEEVES

SCALE : NOT TO SCALE



1 GENERAL NOTES

4 CATCH BASIN / AREA DRAIN DETAIL

5 SEPTIC TANK DETAIL

6 DETAIL OF DECK DRAIN

Republika ng Pilipinas
 Lungsod ng Quezon
CITY ENGINEERING DEPARTMENT

PROJECT TITLE:
PROPOSED CONSTRUCTION OF THREE (3)-STOREY MULTIPURPOSE HALL AND UPGRADING OF ELECTRICAL SYSTEM AT JUAN SUMILONG HIGH SCHOOL

DRAWN BY:
 DATE:
 CHECKED BY:
 REVISIONS:

SUBMITTED BY:

ENGR. LEO S. DEL ROSARIO
 HEAD, PLUMBING & PROGRAMMING DIVISION

RECOMMENDING APPROVAL:

ENGR. MAGANI R. VERZOSA, JR.
 CITY ENGINEERING DEPARTMENT

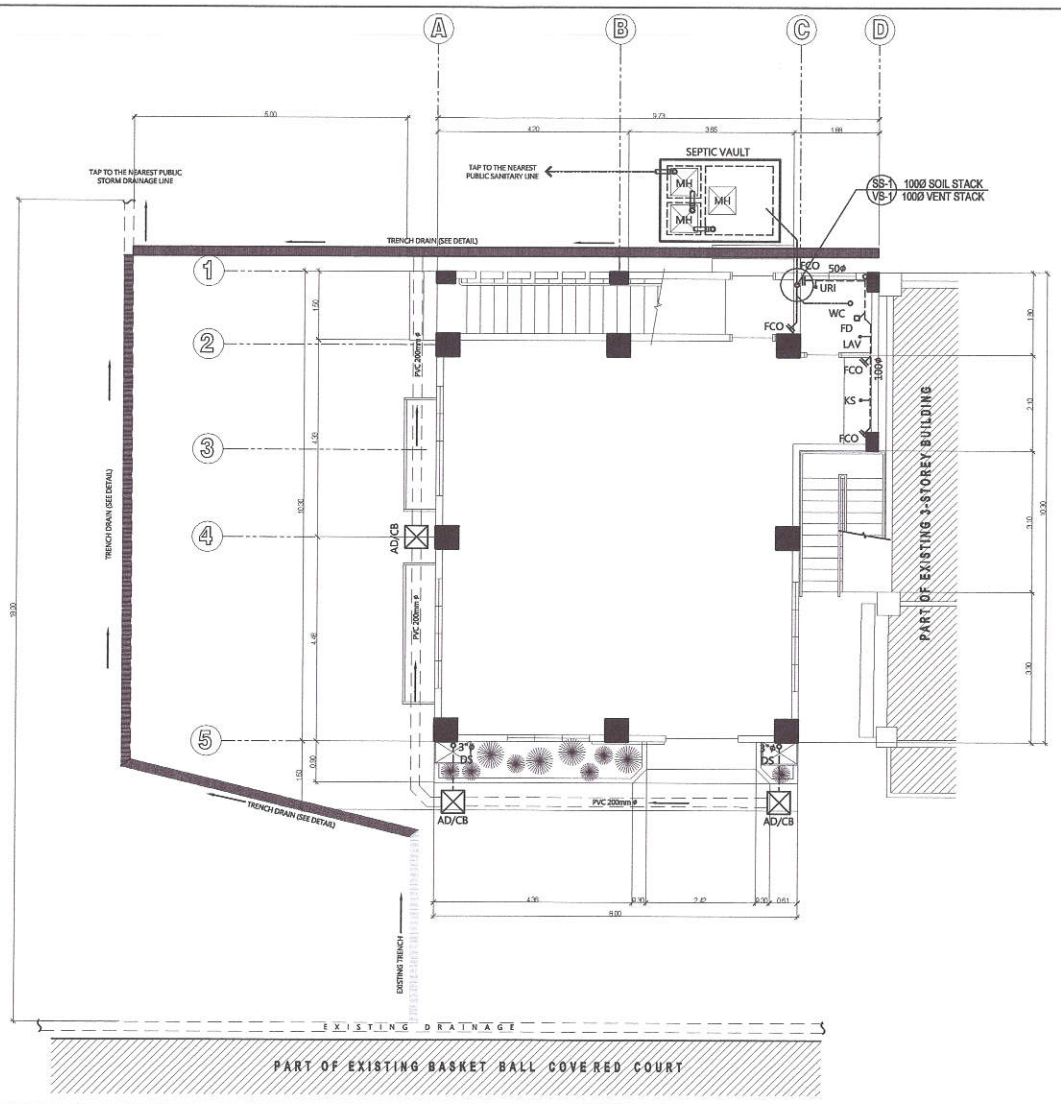
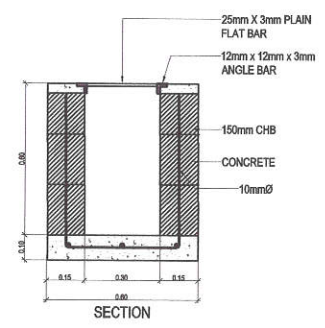
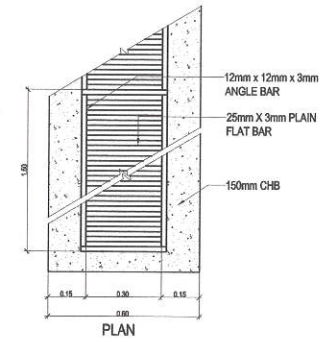
APPROVED BY:

HON. MA. JOSEFINA G. BELMONTE
 CITY MAJOR, QUEZON CITY

SHEET CONTENTS:
 GENERAL NOTES
 LEGEND & SYMBOLS
 DETAIL OF PIPE SLEEVES
 CATCH BASIN DETAIL
 SEPTIC TANK DETAIL
 DETAIL OF DECK DRAIN

SHEET NO.
PL-01

20-00144

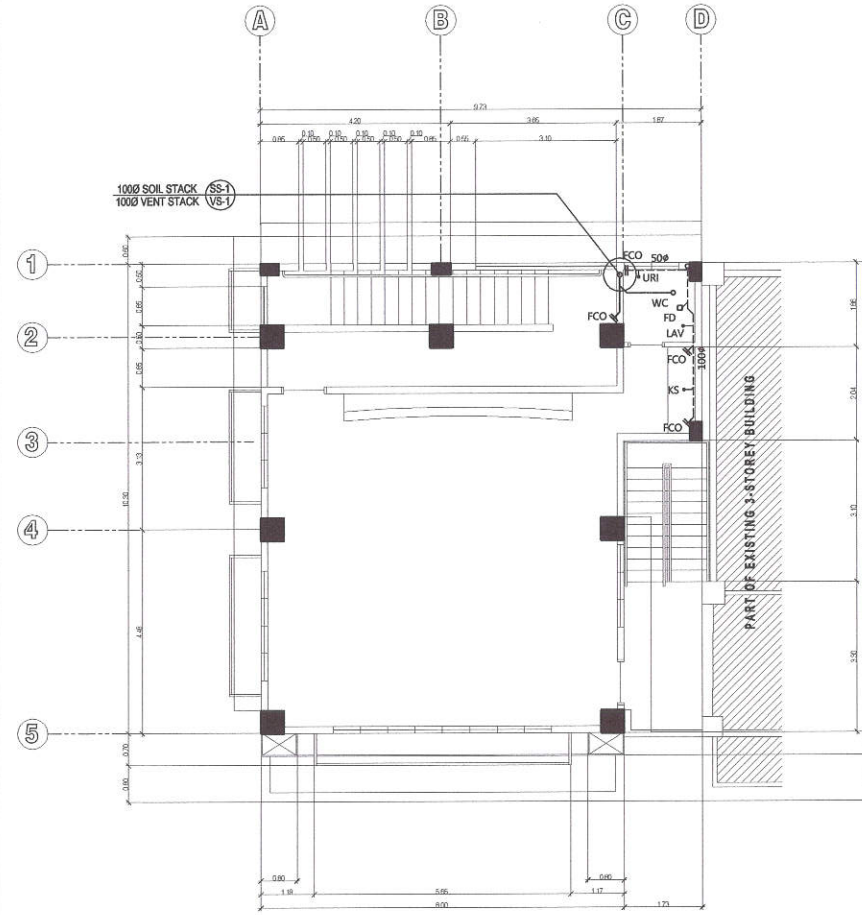
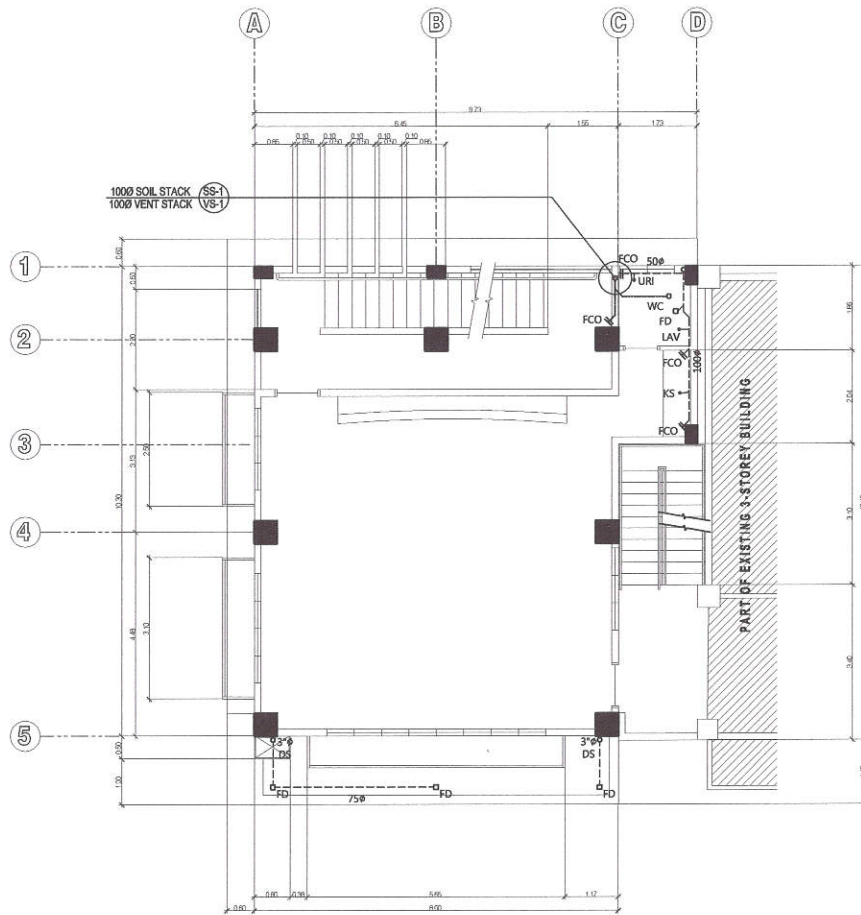


1 GROUND FLOOR SANITARY & STORM DRAINAGE LAYOUT

SCALE 1:60 MTS

<p>Republika ng Pilipinas Lungsod ng Quezon CITY ENGINEERING DEPARTMENT</p>	<p>PROJECT TITLE: PROPOSED CONSTRUCTION OF THREE (3)-STOREY MULTIPURPOSE HALL AND UPGRADING OF ELECTRICAL SYSTEM AT JUAN SMLULONG HIGH SCHOOL</p>	<p>DRAWN BY: DATE: CHECKED BY: REVISIONS:</p>	<p>SUBMITTED BY: ENGR. LEO S. DEL ROSARIO HEAD, PLANNING & PROGRAMMING DIVISION</p>	<p>RECOMMENDING APPROVAL: ENGR. BAGANI R. VERZOSA, JR. CITY ENGINEERING DEPARTMENT</p>	<p>APPROVED BY: HON. MA. JOSEFINA G. BELMONTE CITY MAYOR, QUEZON CITY</p>	<p>SHEET CONTENTS: GROUND FLOOR SANITARY & DRAINAGE LAYOUT TRENCH DETAIL</p>	<p>SHEET NO. PL-02</p>
	<p>LOCATION: BARANGAY SAN ROQUE, DISTRICT 3, QUEZON CITY</p>						

20-00144



1 SECOND FLOOR SANITARY & STORM DRAINAGE LAYOUT

SCALE 1:60 MTS

2 THIRD FLOOR SANITARY & STORM DRAINAGE LAYOUT

SCALE 1:60 MTS



Republika ng Pilipinas
Lungsod ng Quezon
CITY ENGINEERING DEPARTMENT

PROJECT TITLE:
PROPOSED CONSTRUCTION OF THREE (3) STOREY
MULTI-PURPOSE HALL AND UPGRADING OF
ELECTRICAL SYSTEM AT JUAN SUMULONG HIGH
SCHOOL
LOCATION: BARANGAY SAN ROQUE, DISTRICT 3, QUEZON CITY

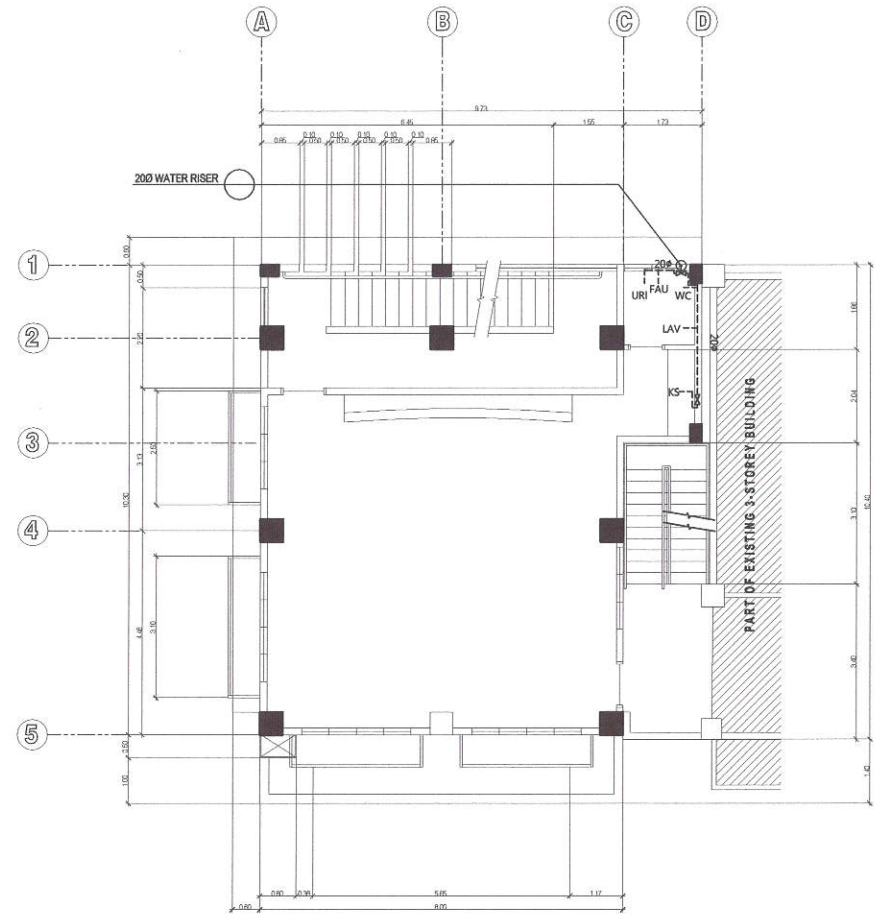
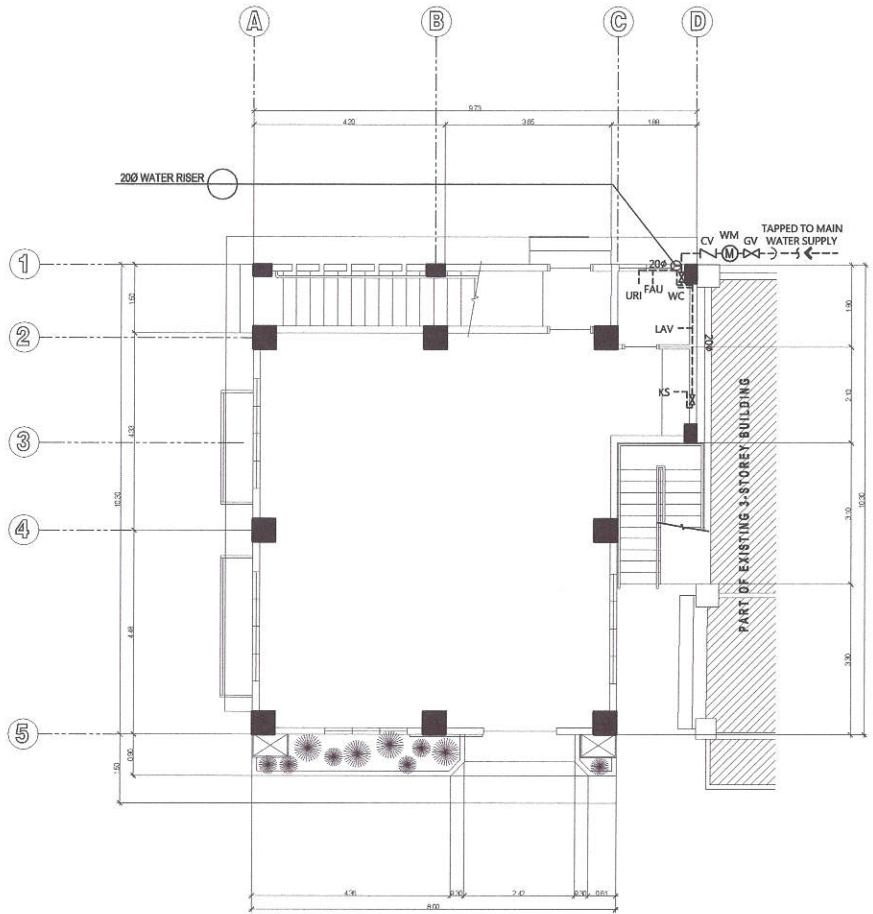
DRAWN BY:
DATE:
CHECKED BY:
REVISIONS:
ENGR. LEO S. DEL ROSARIO
HEAD, PLANNING & REVENUE DIVISION

RECOMMENDING APPROVAL:
ENGR. ISAGANI R. VERZOSA, JR.
CHIEF, CITY ENGINEERING DEPARTMENT

APPROVED BY:
HON. MA. JOSEFINA G. BELMONTE
CITY MAYOR, QUEZON CITY

SHEET CONTENTS:
SECOND FLOOR SANITARY &
STORM DRAINAGE LAYOUT
THIRD FLOOR SANITARY &
STORM DRAINAGE LAYOUT
SHEET NO.
PL-03

20-00144



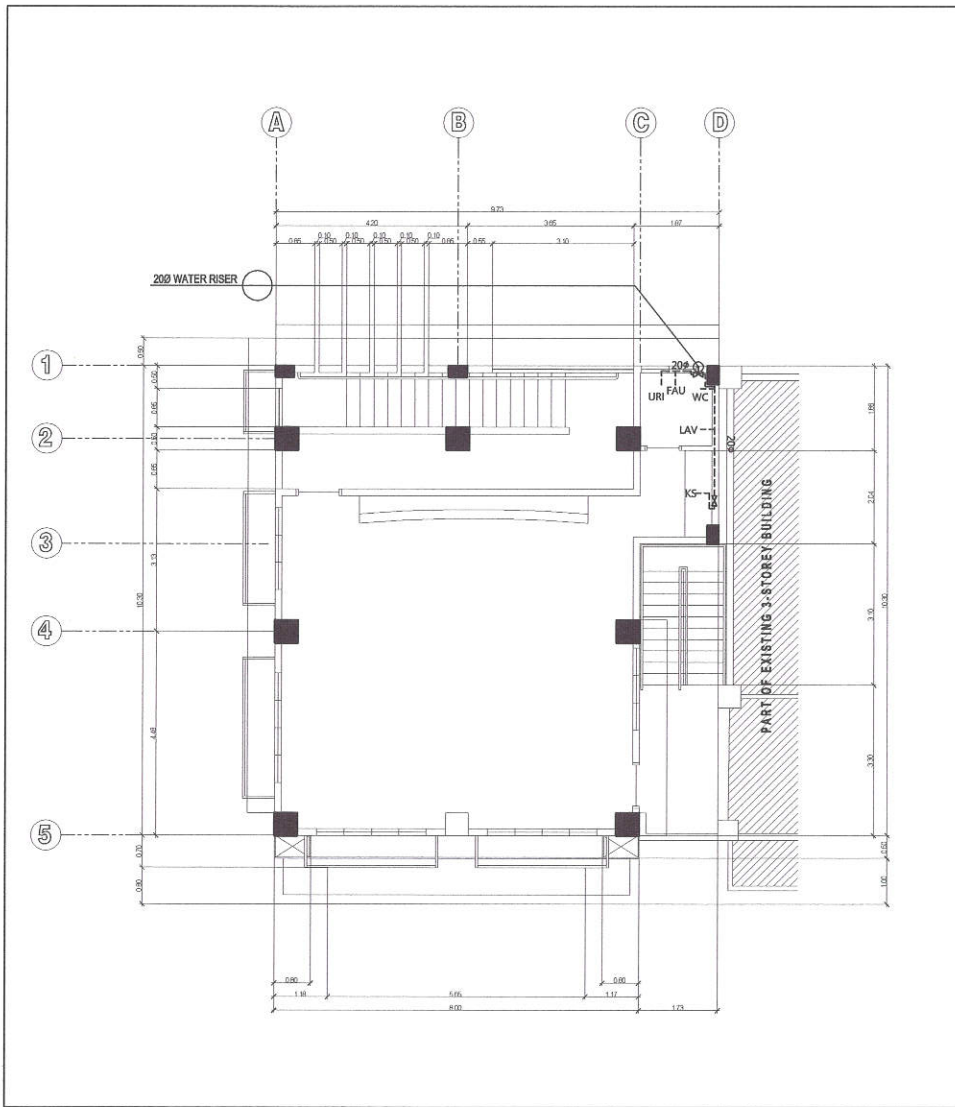
1 GROUND FLOOR WATERLINE LAYOUT

2 SECOND FLOOR WATERLINE LAYOUT

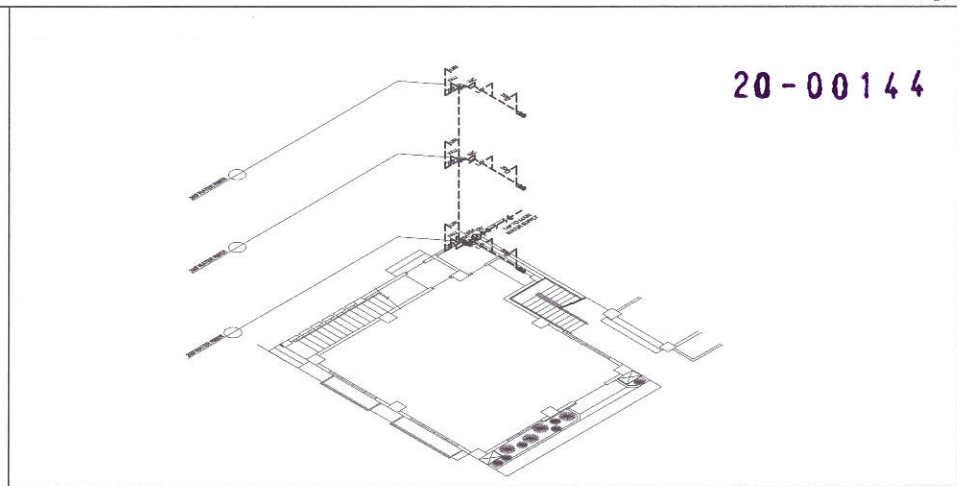
SCALE 1:60 MTS

SCALE 1:60 MTS

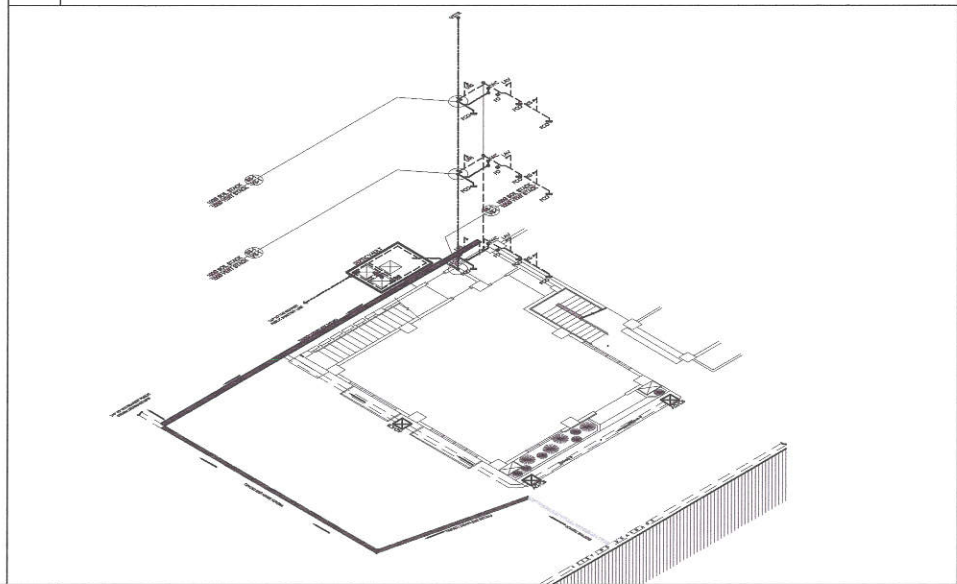
 <p>Republika ng Pilipinas Lungsod ng Quezon CITY ENGINEERING DEPARTMENT</p>	<p>PROJECT TITLE: PROPOSED CONSTRUCTION OF THREE (3)-STOREY MULTIPURPOSE HALL AND UPGRADING OF ELECTRICAL SYSTEM AT JUAN SUMULONG HIGH SCHOOL</p>	<p>DRAWN BY: DATE: CHECKED BY: </p>	<p>SUBMITTED BY:  ENGR. LEO S. DEL ROSARIO HEAD, PLANNING & PROGRAMMING DIVISION</p>	<p>RECOMMENDING APPROVAL:  ENR. ISAGANI R. VERZOSA, JR. CITY ENGINEERING DEPARTMENT</p>	<p>APPROVED BY:  HON. MA. JOSEFINA G. BELMONTE CITY MAYOR, QUEZON CITY</p>	<p>SHEET CONTENTS: GROUND FLOOR WATERLINE LAYOUT SECOND FLOOR WATERLINE LAYOUT</p>	<p>SHEET NO. PL-04</p>
	<p>LOCATION: BARANGAY SAN ROQUE, DISTRICT 3, QUEZON CITY</p>	<p>REVISIONS:</p>					





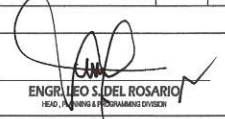


1 THIRD FLOOR WATERLINE LAYOUT SCALE 1:60 MTS



2 WATERLINE ISOMETRIC LAYOUT SCALE 1:100 MTS

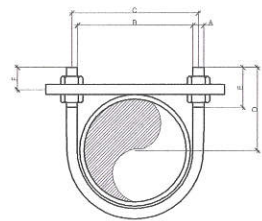


3 SANITARY & STORM DRAINAGE ISOMETRIC LAYOUT SCALE 1:100 MTS

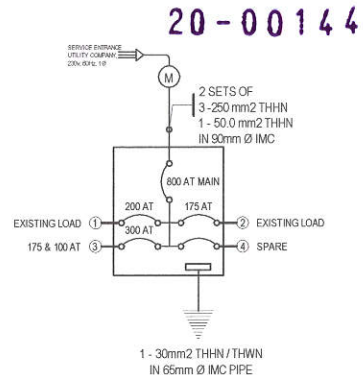
 <p>Republika ng Pilipinas Lungsod ng Quezon CITY ENGINEERING DEPARTMENT</p>	<p>PROJECT TITLE: PROPOSED CONSTRUCTION OF THREE (3)-STOREY MULTIPURPOSE HALL AND UPGRADING OF ELECTRICAL SYSTEM AT JUAN SUMILONG HIGH SCHOOL</p>	<p>DRAWN BY: DATE: CHECKED BY: </p>	<p>SUBMITTED BY:  ENGR. LEO S. DEL ROSARIO HEAD, TRAINING & PROGRAMS DIVISION</p>	<p>RECOMMENDING APPROVAL:  ENGR. ISAGANI R. VERZOSA, JR. D.C., ENGINEERING DEPARTMENT</p>	<p>APPROVED BY:  HON. MA. JOSEFINA G. BELMONTE CITY ENGINEER, QUEZON CITY</p>	<p>SHEET CONTENTS: THIRD FLOOR WATERLINE LAYOUT WATERLINE ISOMETRIC LAYOUT SANITARY & STORM DRAINAGE LAYOUT</p>	<p>SHEET NO. PL-05</p>	
	<p>LOCATION: BARANGAY SAN ROQUE, DISTRICT 3, QUEZON CITY</p>	<p>REVISION NO.:</p>	<p>REVISION NO.:</p>	<p>REVISION NO.:</p>	<p>REVISION NO.:</p>	<p>REVISION NO.:</p>	<p>REVISION NO.:</p>	<p>REVISION NO.:</p>
	<p>PROJECT TITLE:</p>	<p>DRAWN BY:</p>	<p>SUBMITTED BY:</p>	<p>RECOMMENDING APPROVAL:</p>	<p>APPROVED BY:</p>	<p>SHEET CONTENTS:</p>	<p>SHEET NO.:</p>	
	<p>PROJECT TITLE:</p>	<p>DRAWN BY:</p>	<p>SUBMITTED BY:</p>	<p>RECOMMENDING APPROVAL:</p>	<p>APPROVED BY:</p>	<p>SHEET CONTENTS:</p>	<p>SHEET NO.:</p>	

- ALL ELECTRICAL WORKS HEREIN SHALL BE DONE IN ACCORDANCE WITH THESE PLANS AND SPECIFICATIONS, THE APPLICABLE PROVISIONS OF THE LATEST EDITION OF THE PHILIPPINE ELECTRICAL CODE (PEC), THE RULES AND REGULATIONS OF THE LOCAL INSURING AGENCY AND THE REQUIREMENTS OF THE LOCAL POWER AND TELEPHONE COMPANIES. THE ELECTRICAL WORKS SHALL BE UNDER THE IMMEDIATE SUPERVISION OF A QUALY REGISTERED ELECTRICAL ENGINEER.
- THE SERVICE ENTRANCE SHALL BE 200 VOLTS, THREE Ø, SHIPED (WITH NEUTRAL) BE HELD IN RIGID STEEL CONDUIT (PVC).
- THE MAIN AND BRANCH CONDUIT OVER CURRENT PROTECTION SHALL BE OF AIR CIRCUIT BREAKER TYPE "C", "MISTAKE FREE", OR APPROVED EQUAL ENCLOSED IN A METAL CABINET.
- UNLESS SPECIFIED IN THE PLAN, MINIMUM SIZE OF WIRE AND CONDUIT SHALL BE 25mm² & 32mm^Ø (Ø) RESPECTIVELY. ALL WIRE SHALL BE CATED 90V TO 100V THIN OR INSULATED.
- ALL SERVICE ENTRANCE EQUIPMENT, SWITCHES, PANEL, BOXES, LIGHTING FIXTURES AND NON-CURRENT CARRYING METAL PARTS SHALL BE PROPERLY GROUNDED IN ACCORDANCE WITH THE PHILIPPINE ELECTRICAL CODE.
- CONVENIENCE OUTLET AND LIGHTING SWITCHES SHALL BE RATED AT 15A, 250V AS MANUFACTURED BY THE LOCAL APPROVED SUPPLIER.
- ALL MOUNTING HEIGHTS OF WIRING DEVICES SHALL BE AS FOLLOWS:
 LIGHTING SWITCHES - 1.50m ABOVE FLOOR FINISH
 a. CONVENIENCE OUTLET - 0.30m ABOVE FLOOR FINISH OR AS REQUIRED
 b. PANEL BOARD - 1.50m ABOVE FLOOR FINISH @ CENTER
 c. EXHAUST FAN - 0.50m TOP OF DOOR JAMB
 d. EMERGENCY LIGHT - 2.00m ABOVE FLOOR FINISH
 e. EMERGENCY LIGHT - 2.00m ABOVE FLOOR FINISH
 f. ALL BRANCHES AND CIRCUIT SHALL NOT BE LOADED MORE THAN 80% OF RATED CAPACITY.
 g. PULL BOXES SHALL BE PROVIDED WHENEVER NECESSARY TO FACILITATE WIRE PULLING EVEN IF THESE ARE NOT INDICATED ON PLANS.

SYMBOL	DESCRIPTION	SYMBOL	DESCRIPTION
	SWITCH LOCATION		AIR CONDITIONING UNIT OUTLET
	SINGLE POLE SWITCH		1.5kW LED FL. TUBE
	TWO GANG SWITCH		Ø IF CYLINDRICAL COMPONENT Ø IF TUBULAR COMPONENT
	THREE GANG SWITCH		CT RATED kWh METER
	THREE WAY SWITCH		MAIN CIRCUIT BREAKER
	DUPLEX CONVENIENCE OUTLET		DRIFT FAN
	CIRCUIT HOME RUN TO PANEL BOARD		SINGLE CONVENIENCE OUTLET w/ 1 x EMERGENCY LIGHT, TWIN ROAD
	SERVICE ENTRANCE		LIGHTING SWITCH CONNECTION
	LIGHTING CIRCUIT RUN		



Pipe Size	A	B	C	D	E	F
12	6.25	23.44	23.69	60.75	63.13	67.81
15	8.25	26.13	24.38	66.13	68.51	73.19
20	10.25	34.58	40.03	68.75	63.13	73.54
25	13.25	42.19	61.58	71.50	63.13	80.87
30	16.25	50.00	69.28	75.00	63.00	91.58
35	19.25	60.94	70.31	81.25	63.00	91.58
40	22.25	73.44	80.69	86.75	63.00	97.81
45	25.25	86.06	101.59	93.00	75.00	98.25
50	28.25	99.06	114.08	98.25	75.00	98.25
55	31.25	114.08	130.83	103.50	75.00	98.25

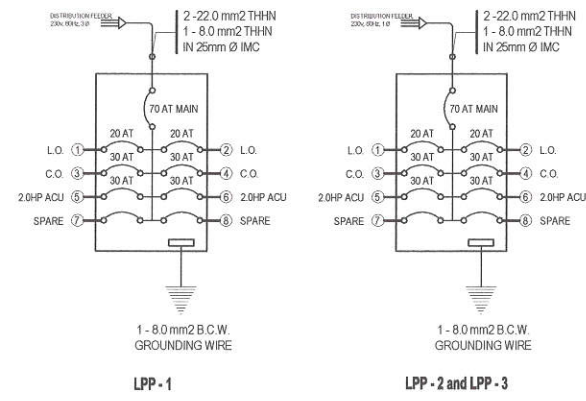
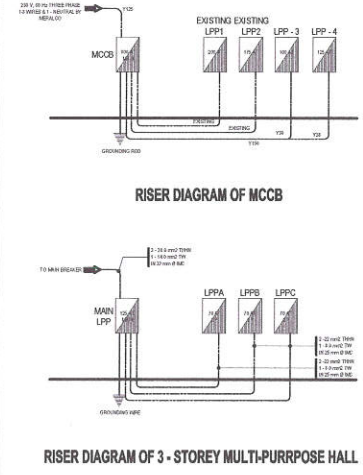


1 GENERAL NOTES

2 LEGEND & SYMBOLS

3 U - BOLT DETAIL

4 MCCB DETAIL



LIGHTING & POWER PANEL: "LPPA"
 LOCATION: GROUND FLOOR
 240 VOLTS, SINGLE PHASE, 2 - WIRE AND GROUND
 FLUSH MOUNTED, NEMA 12, WITH GROUNDING TERMINAL STRIP
 CENTER MAIN : 70AT 2P, 1MGB BOLT-ON

Ckt No.	VOLTS	OUTLET	OTHER LOAD SERVICE	AMPERE LOAD		VOLT	CIRCUIT BREAKER	SIZE OF WIRE AND CONDUITS
				1 Ø	3 Ø			
1	230	Ø	4- ORBIT FAN	0.22	1.500	20 AT 2P, BOLT ON	3-3mm ² THW WIRE IN 25mm Ø PVC	
2	230	TH	1- EXHAUST FAN	8.10	1.400	20 AT 2P, BOLT ON	2-3mm ² THW WIRE IN 25mm Ø PVC	
3	230	Ø	2- EMERGENCY LIGHT	4.70	1.500	20 AT 2P, BOLT ON	3-3mm ² THW WIRE and 1ØNEC 3mm ² THW GROUND WIRE IN 25mm Ø PVC	
4	230	TS	2.0HP ACU	11.74	2.700	20 AT 2P, BOLT ON	3-3mm ² THW WIRE and 1ØNEC 3mm ² THW GROUND WIRE IN 25mm Ø PVC	
5	230	Ø	2.0HP ACU	12.00	2.700	20 AT 2P, BOLT ON	3-3mm ² THW WIRE and 1ØNEC 3mm ² THW GROUND WIRE IN 25mm Ø PVC	
6	230	Ø	2.0HP ACU	12.00	2.700	20 AT 2P, BOLT ON	3-3mm ² THW WIRE and 1ØNEC 3mm ² THW GROUND WIRE IN 25mm Ø PVC	
7	230	Ø	SPARE	0.52	1.500	30 AT 2P, BOLT ON	2-3mm ² THW WIRE	
8	230	Ø	SPARE	0.52	1.500	40 AT 2P, BOLT ON	2-3mm ² THW WIRE	
TOTAL				84.89	14.800			

IT = (14,900 VA / 230 V) + (0.25 X 12.00) = 67.78
 LPPA - MAIN CIRCUIT BREAKER
 USE: 70 AT 2P CB BOLT-ON

SERVICE ENTRANCE
 USE: 2 - 22.0 mm² THW WIRE & 1 - 8.0 mm² THW WIRE
 IN 25 mm Ø IMC PIPE

COMPUTATION FOR MAIN CB:
 70 AT X 1.732 = 121.24
 USE: 125 AT, 3P MAIN CB WITH
 3 - 30mm² THW / THWN,
 1 - 14mm² THW IN 32mm Ø IMC PIPE

LIGHTING & POWER PANEL: "LPPB" & "LPPC"
 LOCATION: SECOND & THIRD FLOOR
 240 VOLTS, SINGLE PHASE, 2 - WIRE AND GROUND
 FLUSH MOUNTED, NEMA 12, WITH GROUNDING TERMINAL STRIP
 CENTER MAIN : 70AT 2P, 1MGB BOLT-ON

Ckt No.	VOLTS	OUTLET	OTHER LOAD SERVICE	AMPERE LOAD		VOLT	CIRCUIT BREAKER	SIZE OF WIRE AND CONDUITS
				1 Ø	3 Ø			
1	230	Ø	1- EXHAUST FAN	0.48	0.80	20 AT 2P, BOLT ON	3-3mm ² THW WIRE IN 25mm Ø PVC	
2	230	Ø	4- ORBIT FAN	4.35	1.500	20 AT 2P, BOLT ON	3-3mm ² THW WIRE IN 25mm Ø PVC	
3	230	Ø	4- EMERGENCY LIGHT	8.59	1.400	20 AT 2P, BOLT ON	3-3mm ² THW WIRE and 1ØNEC 3mm ² THW GROUND WIRE IN 25mm Ø PVC	
4	230	TS	2.0HP ACU	11.74	2.700	20 AT 2P, BOLT ON	3-3mm ² THW WIRE and 1ØNEC 3mm ² THW GROUND WIRE IN 25mm Ø PVC	
5	230	Ø	2.0HP ACU	12.00	2.700	20 AT 2P, BOLT ON	3-3mm ² THW WIRE and 1ØNEC 3mm ² THW GROUND WIRE IN 25mm Ø PVC	
6	230	Ø	2.0HP ACU	12.00	2.700	20 AT 2P, BOLT ON	3-3mm ² THW WIRE and 1ØNEC 3mm ² THW GROUND WIRE IN 25mm Ø PVC	
7	230	Ø	SPARE	0.52	1.500	30 AT 2P, BOLT ON	2-3mm ² THW WIRE	
8	230	Ø	SPARE	0.52	1.500	40 AT 2P, BOLT ON	2-3mm ² THW WIRE	
TOTAL				64.87	14.400			

IT = (14,450 VA / 230 V) + (0.25 X 12.00) = 65.87
 LPPB & LPPC - MAIN CIRCUIT BREAKER
 USE: 70 AT 2P CB BOLT-ON

SERVICE ENTRANCE
 USE: 2 - 22.0 mm² THW WIRE & 1 - 8.0 mm² THW WIRE
 IN 25 mm Ø IMC PIPE

4 RISER DIAGRAM

5 LPP1 AND LPP2 & LPP3 DETAILS

6 SCHEDULE OF LOADS

Republika ng Pilipinas
 Lungsod ng Quezon
CITY ENGINEERING DEPARTMENT

PROJECT TITLE:
PROPOSED CONSTRUCTION OF THREE (3)-STOREY MULTI-PURPOSE HALL, AND UPGRADING OF ELECTRICAL SYSTEM AT JUAN SUMULONG HIGH SCHOOL
 LOCATION: BARANGAY SAN ROQUE, DISTRICT 3, QUEZON CITY

DRAWN BY:
 DATE:
 CHECKED BY:
 REVISION NO.:

SUBMITTED BY:

ENGR. LEO S. DEL ROSARIO
 HEAD, CIVIL ENGINEERING DIVISION

RECOMMENDING APPROVAL:

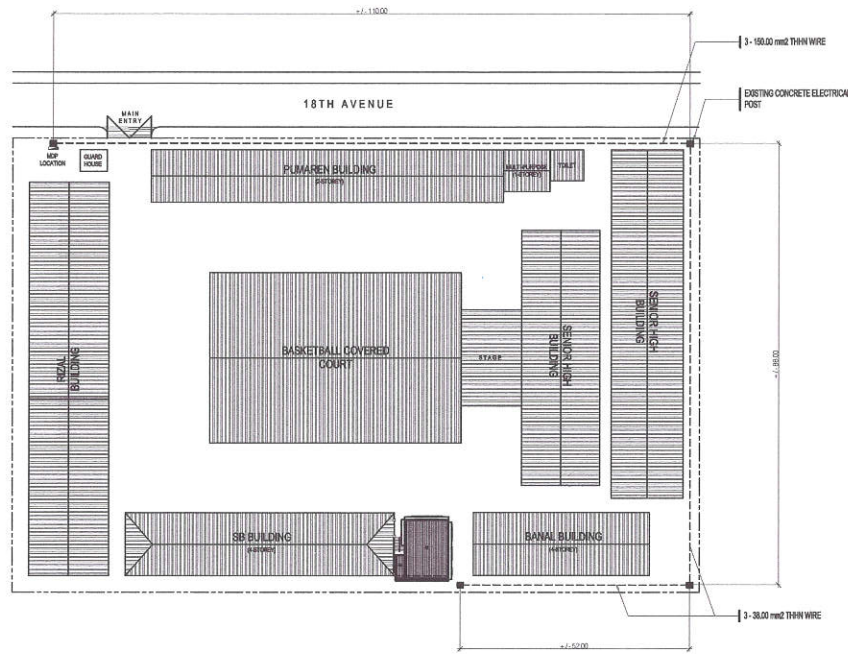
ENGR. JAGANI R. VERZOSA, JR.
 CITY ENGINEERING DEPARTMENT

APPROVED BY:

HON. MA. JOSETINA G. BELMONTE
 CITY MAYOR, QUEZON CITY

SHEET CONTENTS: GENERAL NOTES, LEGEND & SYMBOLS, ELECTRICAL SCHEDULE, PHASE SEQUENCE, SCHEDULE OF LOADS
EL-01

20-00144



1 SITE DEVELOPMENT LAYOUT

SCALE : NOT TO SCALE

MOLDED MAIN CIRCUIT BREAKER: "MCCB"

MAIN CIRCUIT BREAKER INTERRUPTING CAPACITY @ 230 VOLTS 65 kAIC
BRANCHES CIRCUIT BREAKER INTERRUPTING CAPACITY @ 240 VOLTS 45 kAIC

LOCATION: MOP NEAR GUARD HOUSE
3 POLE, 3 Ø, 60 Hz, IN NEMA 5R ENCLOSURE WITH GROUNDING TERMINAL, TWO LUGS PER PHASE
CENTER MAIN : 800 AT 3P, TMCB BOLT - ON

CIRCUIT NO.	VOLTS	OUTLET LO	CO	OTHER LOAD SERVICE	AMPERE LOAD			VOLT AMPERE	CIRCUIT BREAKER	SIZE OF WIRE AND CONDUITS
					AB	BC	CA			
1	230			EXISTING LOAD 200 AT	100	100	100	20,000	300 AT 3P, BOLT ON	EXISTING WIRE
2	230			EXISTING LOAD 175 AT	90	90	90	20,700	175 AT 3P, BOLT ON	EXISTING WIRE
3	230			125 AT	70	70	70	43,500		
4	230			100 AT	90	90	90	10,800	300 AT 3P, BOLT ON	1-150mm2 THWN WIRE and 1-30mm2 THWN GROUND WIRE IN 85mm Ø IMC PIPE
5	230			SPARE	00	00	00			
TOTAL					410					

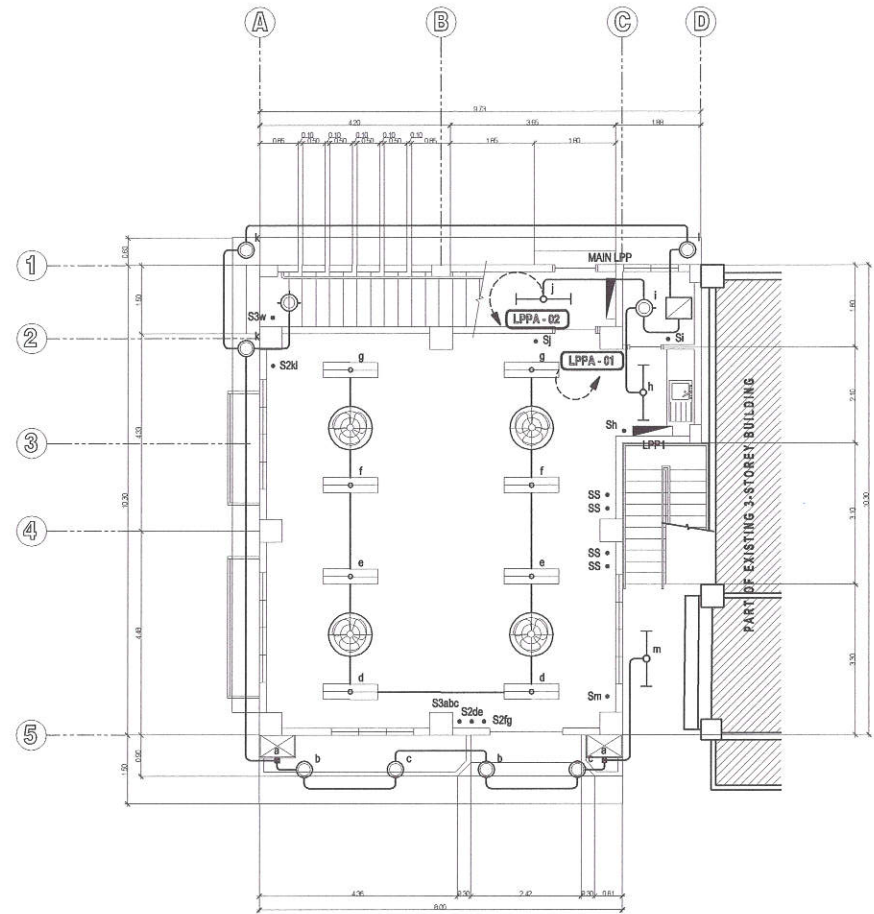
IT = 410 X 1.732 = 710.12
MCCB
USE : 800 AT 3P CB BOLT-ON

SERVICE ENTRANCE
USE : 3 SETS, 3 - 125mm2 THWN / THWN & 1 - 30mm2 THW WIRE
IN 85mm Ø IMC PIPE

2 SCHEDULE OF LOADS OF MCCB

3 GROUND FLOOR LIGHTING LAYOUT

SCALE 1:60 MTS



Republika ng Pilipinas
Lungsod ng Quezon
CITY ENGINEERING DEPARTMENT

PROJECT TITLE:
PROPOSED CONSTRUCTION OF THREE (3)-STOREY MULTIPURPOSE HALL AND UPGRADING OF ELECTRICAL SYSTEM AT JUAN SUMALONG HIGH SCHOOL
LOCATION: BARANGAY SAN ROQUE, DISTRICT 3, QUEZON CITY

DESIGNED BY:
DATE:
CHECKED BY:
REVISION NO.:

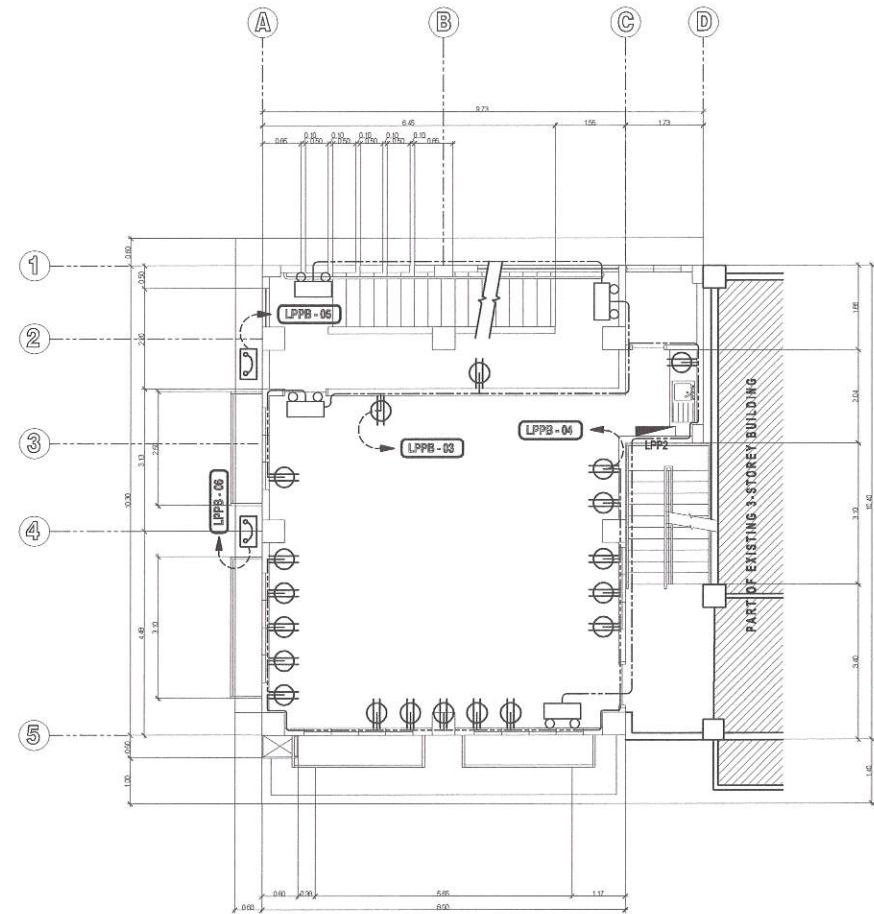
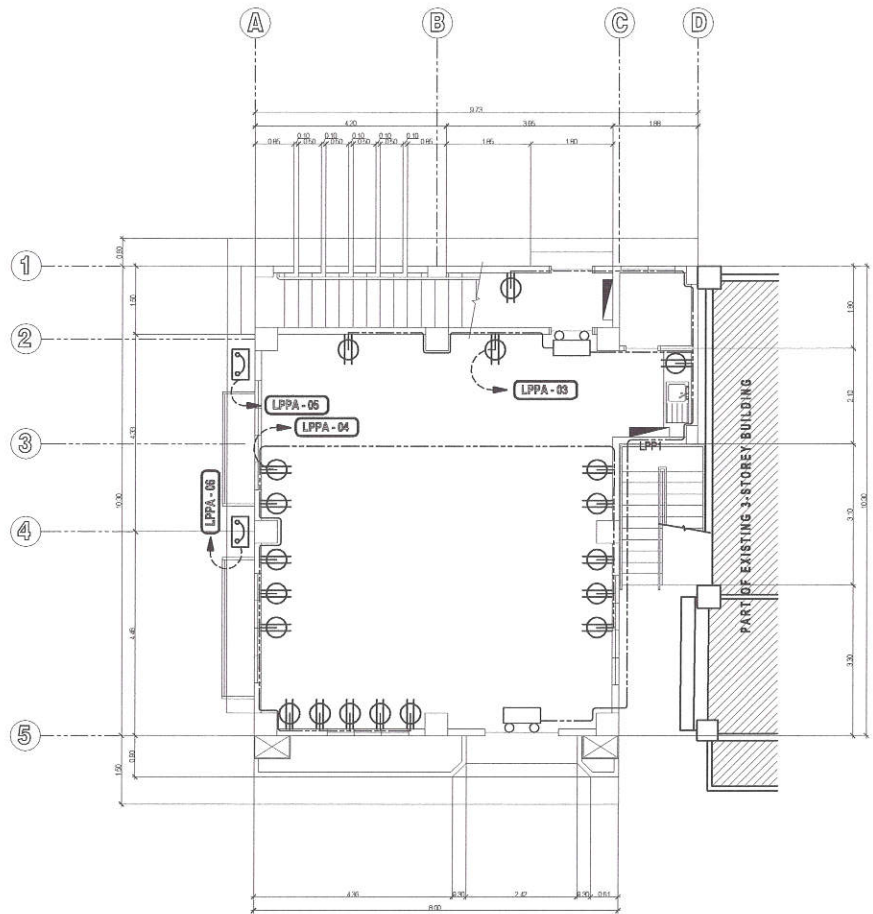
SUBMITTED BY:
[Signature]
ENGR. LEO S. DEL ROSARIO
H.S.D., JUNIOR 3, RECORDING DIVISION

RECOMMENDING APPROVAL:
[Signature]
ENGR. ISAGANI R. VERZOSA, JR.
C.E., CITY ENGINEERING DEPARTMENT

APPROVED BY:
[Signature]
HON. MA. JOSEFINA G. BELMONTE
CITY MAJOR, QUEZON CITY

SHEET CONTENTS:
SITE DEVELOPMENT LAYOUT
SCHEDULE OF LOADS OF MCCB
GROUND FLOOR LIGHTING LAYOUT
SHEET NO.
EL-02

20-00144




1 GROUND FLOOR POWER LAYOUT

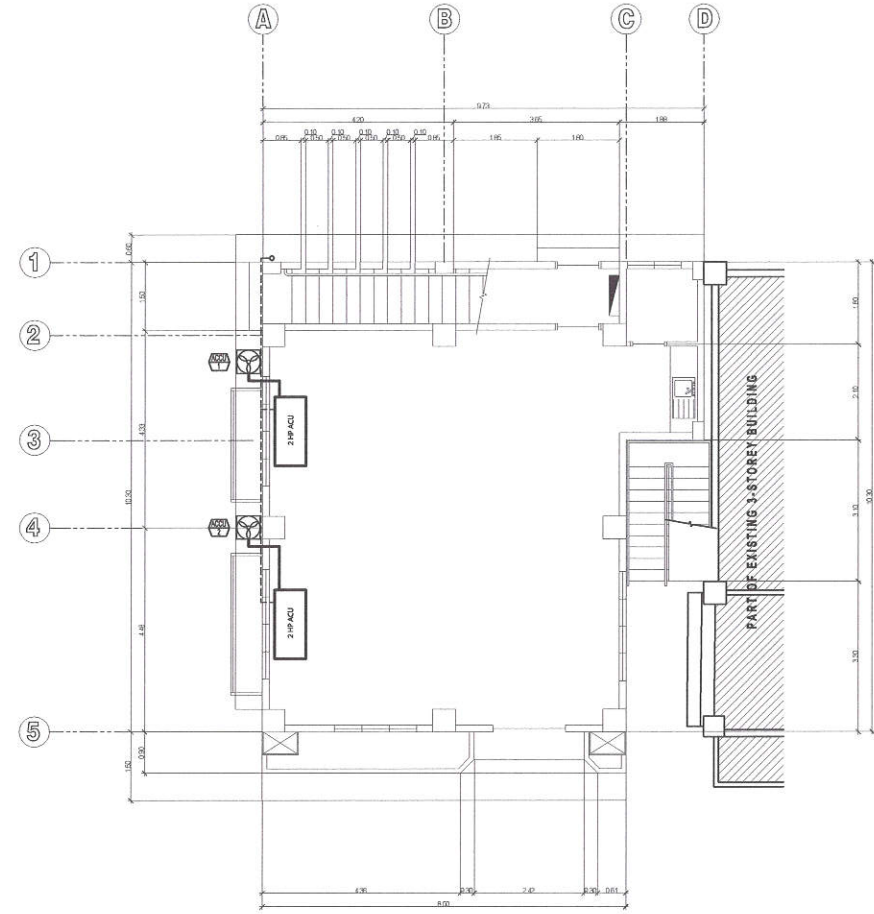
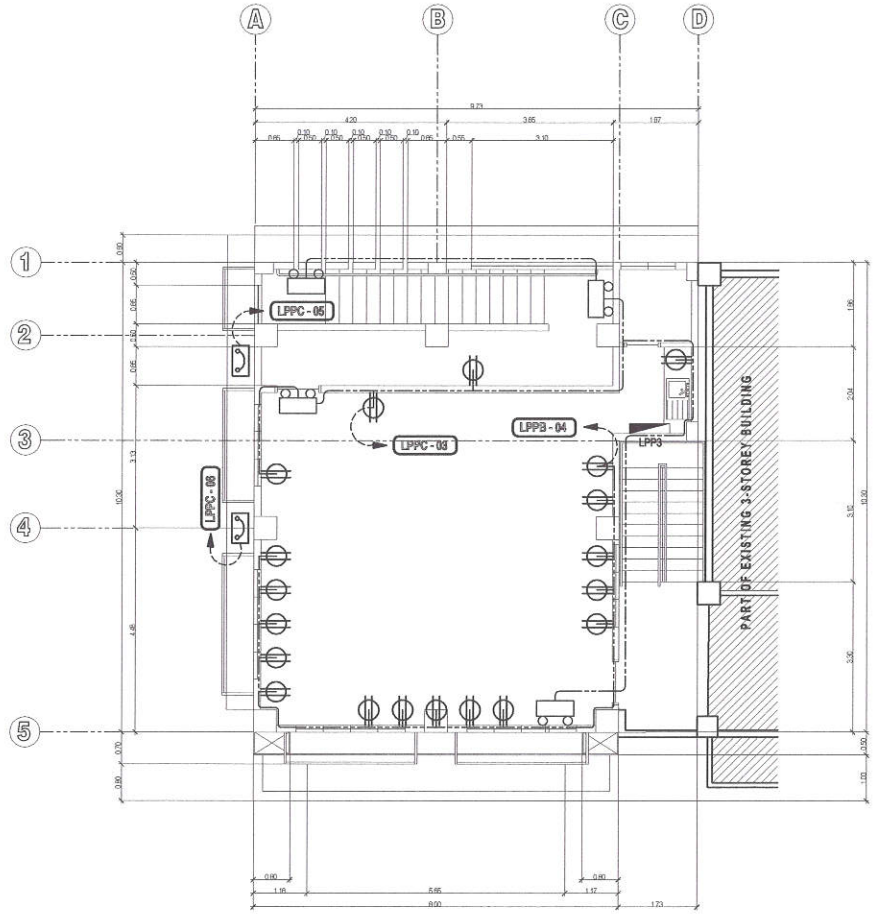
SCALE 1:60 MTS

2 SECOND FLOOR POWER LAYOUT

SCALE 1:60 MTS

 <p>Republika ng Pilipinas Lungsod ng Quezon CITY ENGINEERING DEPARTMENT</p>	<p>PROJECT TITLE: PROPOSED CONSTRUCTION OF THREE (3)-STOREY MULTIPURPOSE HALL AND UPGRADING OF ELECTRICAL SYSTEM AT RIAN SUMULONG HIGH SCHOOL</p>	<p>DRAWN BY: DATE: CHECKED BY: <i>[Signature]</i></p>	<p>SUBMITTED BY: <i>[Signature]</i> ENGR. LEO S. DEL ROSARIO HEAD, PLANNING & PROGRAMMING DIVISION</p>	<p>RECOMMENDING APPROVAL: <i>[Signature]</i> ENGR. JOHANNI R. VERZOSA, JR. CITY ENGINEERING DEPARTMENT</p>	<p>APPROVED BY: <i>[Signature]</i> HON. MA. JOSEFINA G. BELMONTE CITY MAJOR, QUEZON CITY</p>	<p>SHEET CONTENTS: GROUND FLOOR POWER LAYOUT SECOND FLOOR POWER LAYOUT</p>	<p>SHEET NO. EL-04</p>
	<p>LOCATION: BARANGAY SAN ROQUE, DISTRICT 3, QUEZON CITY</p>	<p>REVISION NO.:</p>					

20-00144



1 THIRD FLOOR POWER LAYOUT

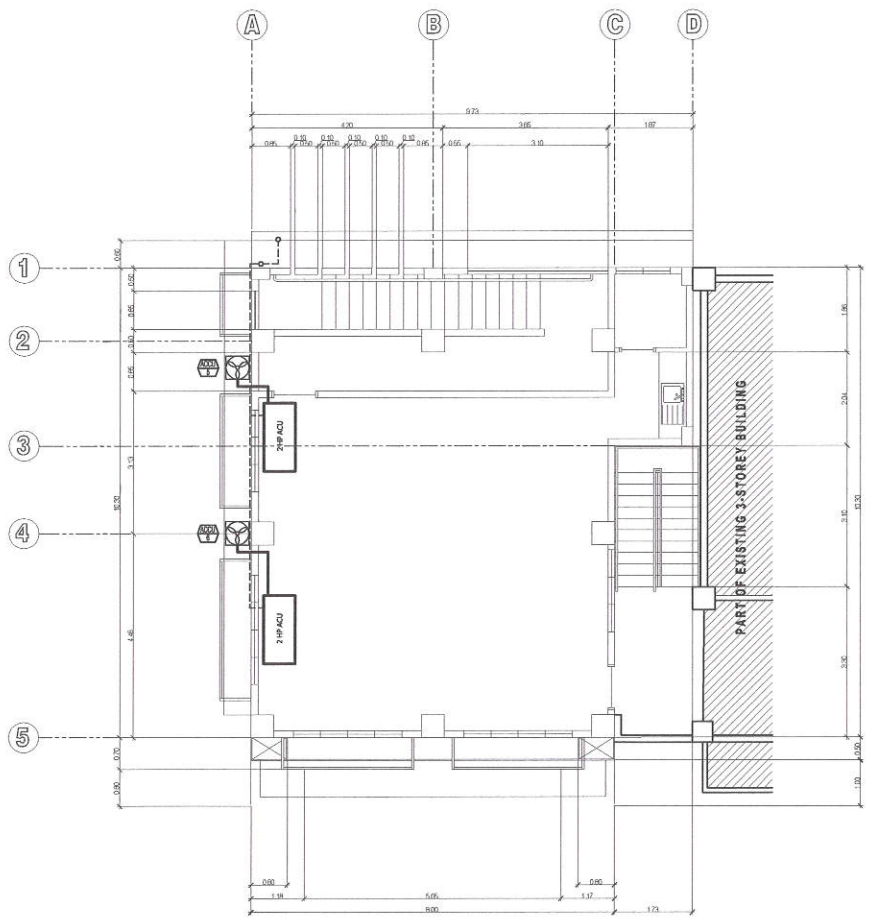
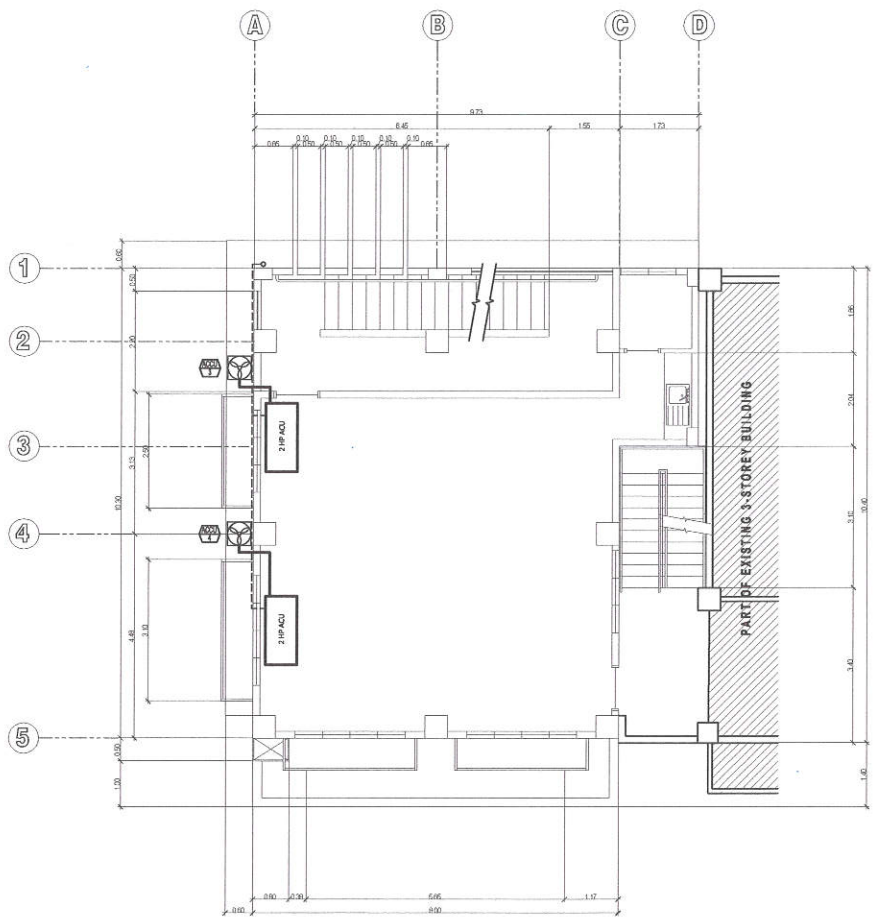
SCALE 1:60 MTS

2 GROUND FLOOR AIR CONDITIONING LAYOUT

SCALE 1:60 MTS

<p>Republika ng Pilipinas Lungsod ng Quezon CITY ENGINEERING DEPARTMENT</p>	<p>PROJECT TITLE: PROPOSED CONSTRUCTION OF THREE (3)-STOREY MULTIPURPOSE HALL AND UPGRADING OF ELECTRICAL SYSTEM AT JUAN SUMULONG HIGH SCHOOL</p>	<p>DRAWN BY: DATE: CHECKED BY: REVISION NO.:</p>	<p>SUBMITTED BY: ENGR. LEO S. DEL ROSARIO HEAD, TRAINING & PROGRAMMING DIVISION</p>	<p>RECOMMENDING APPROVAL: ENGR. ISAGANI R. VERZOSA, JR. JOINT CITY ENGINEERING DEPARTMENT</p>	<p>APPROVED BY: HON. MA. JOSEFINA G. BELMONTE CITY MAYOR, QUEZON CITY</p>	<p>SHEET CONTENTS: THIRD FLOOR POWER LAYOUT GROUND FLOOR AIR CONDITIONING LAYOUT</p>	<p>SHEET NO. EL-05</p>
	<p>LOCATION: BARANGAY SAN ROQUE, DISTRICT 3, QUEZON CITY</p>						

20-00144



1 SECOND FLOOR AIR CONDITIONING LAYOUT

SCALE 1:60 MTS

2 THIRD FLOOR AIR CONDITIONING LAYOUT

SCALE 1:60 MTS

 <p>Republika ng Pilipinas Lungsod ng Quezon CITY ENGINEERING DEPARTMENT</p>	<p>PROJECT TITLE: PROPOSED CONSTRUCTION OF THREE (3)-STOREY MULTIPURPOSE HALL AND UPGRADING OF ELECTRICAL SYSTEM AT LUJAN SUMULONG HIGH SCHOOL</p>	<p>DRAWN BY: DATE: CHECKED BY: <i>A</i></p>	<p>SUBMITTED BY: <i>[Signature]</i> ENGR. LEO S. DEL ROSARIO HEAD OF PLANNING & PROGRAMMING DIVISION</p>	<p>RECOMMENDING APPROVAL: <i>[Signature]</i> ENGR. ISMAEL R. VERZOSA, JR. CITY ENGINEERING DEPARTMENT</p>	<p>APPROVED BY: <i>[Signature]</i> HON. MA. JOSEFINA G. BELMONTE CITY MAYOR, QUEZON CITY</p>	<p>SHEET CONTENTS: SECOND FLOOR AIR CONDITIONING LAYOUT THIRD FLOOR AIR CONDITIONING LAYOUT</p>	<p>SHEET NO. EL-06</p>
	<p>LOCATION: BARANGAY SAN ROQUE, DISTRICT 3, QUEZON CITY</p>	<p>REVISION NO.:</p>					