

PHILIPPINE BIDDING DOCUMENTS

Procurement of INFRASTRUCTURE PROJECTS

Government of the Republic of the Philippines

**PROPOSED REHABILITATION OF HERBERT BAUTISTA
MULTI-PURPOSE BUILDING AT BARANGAY GREATER
LAGRO**

**Project number:
22-00147**

**Sixth Edition
July 2020**

Preface

These Philippine Bidding Documents (PBDs) for the procurement of Infrastructure Projects (hereinafter referred to also as the “Works”) through Competitive Bidding have been prepared by the Government of the Philippines for use by all branches, agencies, departments, bureaus, offices, or instrumentalities of the government, including government-owned and/or -controlled corporations, government financial institutions, state universities and colleges, local government units, and autonomous regional government. The procedures and practices presented in this document have been developed through broad experience, and are for mandatory use in projects that are financed in whole or in part by the Government of the Philippines or any foreign government/foreign or international financing institution in accordance with the provisions of the 2016 revised Implementing Rules and Regulations (IRR) of Republic Act (RA) No. 9184.

The PBDs are intended as a model for admeasurements (unit prices or unit rates in a bill of quantities) types of contract, which are the most common in Works contracting.

The Bidding Documents shall clearly and adequately define, among others: (i) the objectives, scope, and expected outputs and/or results of the proposed contract; (ii) the eligibility requirements of Bidders; (iii) the expected contract duration; and (iv) the obligations, duties, and/or functions of the winning Bidder.

Care should be taken to check the relevance of the provisions of the PBDs against the requirements of the specific Works to be procured. If duplication of a subject is inevitable in other sections of the document prepared by the Procuring Entity, care must be exercised to avoid contradictions between clauses dealing with the same matter.

Moreover, each section is prepared with notes intended only as information for the Procuring Entity or the person drafting the Bidding Documents. They shall not be included in the final documents. The following general directions should be observed when using the documents:

- a. All the documents listed in the Table of Contents are normally required for the procurement of Infrastructure Projects. However, they should be adapted as necessary to the circumstances of the particular Project.
- b. Specific details, such as the “*name of the Procuring Entity*” and “*address for bid submission*,” should be furnished in the Instructions to Bidders, Bid Data Sheet, and Special Conditions of Contract. The final documents should contain neither blank spaces nor options.
- c. This Preface and the footnotes or notes in italics included in the Invitation to Bid, BDS, General Conditions of Contract, Special Conditions of Contract, Specifications, Drawings, and Bill of Quantities are not part of the text of the final document, although they contain instructions that the Procuring Entity should strictly follow.
- d. The cover should be modified as required to identify the Bidding Documents as to the names of the Project, Contract, and Procuring Entity, in addition to date of issue.

- e. Modifications for specific Procurement Project details should be provided in the Special Conditions of Contract as amendments to the Conditions of Contract. For easy completion, whenever reference has to be made to specific clauses in the Bid Data Sheet or Special Conditions of Contract, these terms shall be printed in bold typeface on Sections I (Instructions to Bidders) and III (General Conditions of Contract), respectively.
- f. For guidelines on the use of Bidding Forms and the procurement of Foreign-Assisted Projects, these will be covered by a separate issuance of the Government Procurement Policy Board.

TABLE OF CONTENTS

Glossary of Terms, Abbreviations, and Acronyms.....	5
Section I. Invitation to Bid	8
Section II. Instructions to Bidders.....	9
1. Scope of Bid	10
2. Funding Information	10
3. Bidding Requirements.....	10
4. Corrupt, Fraudulent, Collusive, Coercive, and Obstructive Practices	10
5. Eligible Bidders.....	11
6. Origin of Associated Goods	11
7. Subcontracts	11
8. Pre-Bid Conference.....	12
9. Clarification and Amendment of Bidding Documents.....	12
10. Documents Comprising the Bid: Eligibility and Technical Components	12
11. Documents Comprising the Bid: Financial Component	13
12. Alternative Bids	13
13. Bid Prices	13
14. Bid and Payment Currencies.....	13
15. Bid Security.....	14
16. Sealing and Marking of Bids.....	14
17. Deadline for Submission of Bids	14
18. Opening and Preliminary Examination of Bids	14
19. Detailed Evaluation and Comparison of Bids	14
20. Post Qualification.....	15
21. Signing of the Contract	15
Section III. Bid Data Sheet.....	16
Section IV. General Conditions of Contract	19
1. Scope of Contract.....	20
2. Sectional Completion of Works	20
3. Possession of Site.....	20
4. The Contractor's Obligations.....	20
5. Performance Security	20
6. Site Investigation Reports	21

7.	Warranty.....	21
8.	Liability of the Contractor.....	21
9.	Termination for Other Causes	21
10.	Dayworks	21
11.	Program of Work.....	22
12.	Instructions, Inspections and Audits	22
13.	Advance Payment.....	22
14.	Progress Payments	22
15.	Operating and Maintenance Manuals.....	22
Section V. Special Conditions of Contract.....		24
Section VI. Specifications		26
Section VII. Drawings.....		28
Section VIII. Bill of Quantities		29
Section IX. Checklist of Technical and Financial Documents.....		31

Glossary of Terms, Abbreviations, and Acronyms

ABC – Approved Budget for the Contract.

ARCC – Allowable Range of Contract Cost.

BAC – Bids and Awards Committee.

Bid – A signed offer or proposal to undertake a contract submitted by a bidder in response to and in consonance with the requirements of the bidding documents. Also referred to as *Proposal* and *Tender*. (2016 revised IRR, Section 5[c])

Bidder – Refers to a contractor, manufacturer, supplier, distributor and/or consultant who submits a bid in response to the requirements of the Bidding Documents. (2016 revised IRR, Section 5[d])

Bidding Documents – The documents issued by the Procuring Entity as the bases for bids, furnishing all information necessary for a prospective bidder to prepare a bid for the Goods, Infrastructure Projects, and/or Consulting Services required by the Procuring Entity. (2016 revised IRR, Section 5[e])

BIR – Bureau of Internal Revenue.

BSP – Bangko Sentral ng Pilipinas.

CDA – Cooperative Development Authority.

Consulting Services – Refer to services for Infrastructure Projects and other types of projects or activities of the GOP requiring adequate external technical and professional expertise that are beyond the capability and/or capacity of the GOP to undertake such as, but not limited to: (i) advisory and review services; (ii) pre-investment or feasibility studies; (iii) design; (iv) construction supervision; (v) management and related services; and (vi) other technical services or special studies. (2016 revised IRR, Section 5[i])

Contract – Refers to the agreement entered into between the Procuring Entity and the Supplier or Manufacturer or Distributor or Service Provider for procurement of Goods and Services; Contractor for Procurement of Infrastructure Projects; or Consultant or Consulting Firm for Procurement of Consulting Services; as the case may be, as recorded in the Contract Form signed by the parties, including all attachments and appendices thereto and all documents incorporated by reference therein.

Contractor – is a natural or juridical entity whose proposal was accepted by the Procuring Entity and to whom the Contract to execute the Work was awarded. Contractor as used in these Bidding Documents may likewise refer to a supplier, distributor, manufacturer, or consultant.

CPI – Consumer Price Index.

DOLE – Department of Labor and Employment.

DTI – Department of Trade and Industry.

Foreign-funded Procurement or Foreign-Assisted Project – Refers to procurement whose funding source is from a foreign government, foreign or international financing institution as specified in the Treaty or International or Executive Agreement. (2016 revised IRR, Section 5[b]).

GFI – Government Financial Institution.

GOCC – Government-owned and/or –controlled corporation.

Goods – Refer to all items, supplies, materials and general support services, except Consulting Services and Infrastructure Projects, which may be needed in the transaction of public businesses or in the pursuit of any government undertaking, project or activity, whether in the nature of equipment, furniture, stationery, materials for construction, or personal property of any kind, including non-personal or contractual services such as the repair and maintenance of equipment and furniture, as well as trucking, hauling, janitorial, security, and related or analogous services, as well as procurement of materials and supplies provided by the Procuring Entity for such services. The term “related” or “analogous services” shall include, but is not limited to, lease or purchase of office space, media advertisements, health maintenance services, and other services essential to the operation of the Procuring Entity. (2016 revised IRR, Section 5[r])

GOP – Government of the Philippines.

Infrastructure Projects – Include the construction, improvement, rehabilitation, demolition, repair, restoration or maintenance of roads and bridges, railways, airports, seaports, communication facilities, civil works components of information technology projects, irrigation, flood control and drainage, water supply, sanitation, sewerage and solid waste management systems, shore protection, energy/power and electrification facilities, national buildings, school buildings, hospital buildings, and other related construction projects of the government. Also referred to as *civil works or works*. (2016 revised IRR, Section 5[u])

LGUs – Local Government Units.

NFCC – Net Financial Contracting Capacity.

NGA – National Government Agency.

PCAB – Philippine Contractors Accreditation Board.

PhilGEPS - Philippine Government Electronic Procurement System.

Procurement Project – refers to a specific or identified procurement covering goods, infrastructure project or consulting services. A Procurement Project shall be described, detailed, and scheduled in the Project Procurement Management Plan prepared by the agency which shall be consolidated in the procuring entity's Annual Procurement Plan. (GPPB Circular No. 06-2019 dated 17 July 2019)

PSA – Philippine Statistics Authority.

SEC – Securities and Exchange Commission.

SLCC – Single Largest Completed Contract.

UN – United Nations.

Section I. Invitation to Bid

Notes on the Invitation to Bid

The Invitation to Bid (IB) provides information that enables potential Bidders to decide whether to participate in the procurement at hand. The IB shall be posted in accordance with Section 21.2 of the 2016 revised IRR of RA No. 9184.

Apart from the essential items listed in the Bidding Documents, the IB should also indicate the following:

- a. The date of availability of the Bidding Documents, which shall be from the time the IB is first advertised/posted until the deadline for the submission and receipt of bids;
- b. The place where the Bidding Documents may be acquired or the website where it may be downloaded;
- c. The deadline for the submission and receipt of bids; and
- d. Any important bid evaluation criteria.

The IB should be incorporated into the Bidding Documents. The information contained in the IB must conform to the Bidding Documents and in particular to the relevant information in the Bid Data Sheet.



REPUBLIC OF THE PHILIPPINES
QUEZON CITY GOVERNMENT
BIDS AND AWARDS COMMITTEE FOR INFRASTRUCTURE &
CONSULTANCY



2nd floor, Finance Building, Procurement Department, Quezon City Hall Complex, Elliptical Road, Quezon City

November 14, 2022

Invitation to Bid

No.	Project No.	Project Name	Location	Amount	Duration Cal. Days	Office	Source Fund
<u>Buildings – Small B</u>							
1	22-00136	Proposed Rehabilitation of Office of Secretary to the Mayor at Civic Center Building F, Quezon City Hall Compound at Barangay Central	Central	1,322,036.14	60	Engineering Department	Engineering Dept. - Continuing
2	22-00137	Proposed Construction of Waiting Shed at Wayan Street, Barangay Masambong	Masambong	1,461,471.37	60	Engineering Department	Engineering Dept.
3	22-00138	Proposed Construction of Sump Pit at Quezon City Hall Compound	Central	1,559,466.34	60	Engineering Department	Engineering Dept.
4	22-00139	Proposed Rehabilitation of San Bartolome Multi-Purpose Hall	San Bartolome	1,846,604.16	60	Engineering Department	OCM - 20% CDF
5	22-00140	Proposed Rehabilitation of Sinagtala Day Care and Livelihood Facility	San Antonio	1,965,059.80	60	Engineering Department	Engineering Dept. - Continuing
6	22-00141	Proposed Rehabilitation of Libis Day Care Center	Libis	2,371,163.52	60	Engineering Department	Engineering Dept. - Continuing
7	22-00142	Proposed Renovation of Office Room 309 at Legislative Wing	Central	2,384,669.95	60	Engineering Department	Engineering Dept. - Continuing
8	22-00143	Proposed Rehabilitation of Albert Hall; Councilor's Lounge and Hallway at Third Floor Legislative Wing, Quezon City Hall	Central	3,213,732.09	60	Engineering Department	Engineering Dept. - SB No. 1
9	22-00144	Proposed Rehabilitation of Quezon City Public Library at Quezon City Hall Compound	Central	3,675,953.75	60	Engineering Department	Engineering Dept.
10	22-00145	Proposed Waterproofing of Roof Deck of Quezon City Central Warehouse	Paligsahan	4,397,824.65	60	Engineering Department	Engineering Dept. - Continuing
11	22-00146	Proposed Waterproofing of Roof Deck at Quezon City Health Department	Central	5,146,893.64	60	Engineering Department	Engineering Dept.
12	22-00147	Proposed Rehabilitation of Herbert Bautista Multi-Purpose Building	Greater Lagro	5,777,218.02	120	Engineering Department	OCM - 20% CDF

13	22-00148	Proposed Rehabilitation of Roxas Barangay Hall	Roxas	6,313,727.85	90	Engineering Department	Engineering Dept. - Continuing
14	22-00149	Proposed Rehabilitation of Seventh Floor Ceiling and Waterproofing of Roof Deck at Hall of Justice Annex, Quezon City Hall Compound	Central	10,864,908.52	60	Engineering Department	Engineering Dept. - Continuing
<u>Flood Control – Small B</u>							
15	22-00150	Proposed Construction of Box Culvert at Road lot - 68	Marilag	2,123,619.82	60	Engineering Department	OCM - LDRRMF
<u>Roads – Small B</u>							
16	22-00151	Proposed Rehabilitation of Sidewalk and Drainage at Sunrise Drive (Phase 2)	Bagong Lipunan ng Crame	5,227,178.15	90	Engineering Department	OCM - 20% CDF
17	22-00152	Proposed Rehabilitation of Public Swimming Pool	Greater Lagro	8,062,036.10	90	Engineering Department	Engineering Dept. - Continuing
18	22-00153	Proposed Rehabilitation of Road and Drainage at Hernandez Street	Paltok	11,469,196.11	90	Engineering Department	OCM - 20% CDF
19	22-00154	Proposed Rehabilitation of Road and Drainage at Lotus Street	Fairview	11,507,245.60	90	Engineering Department	OCM - 20% CDF
20	22-00155	Proposed Rehabilitation of Sidewalk, Curb & Gutter at Bignay, Durian, Guyabano, Lanzones, Marang, Naranghita, Langka Streets and Anonas Avenue	Qurino 2B	12,945,307.55	90	Engineering Department	OCM - 20% CDF
21	22-00156	Proposed Rehabilitation of Road and Drainage at Manikling Street	Talayan	16,419,934.72	60	Engineering Department	OCM - 20% CDF
22	22-00157	Proposed Rehabilitation (Surface Improvement) at Temple Drive	Ugong Norte	16,947,584.69	60	Engineering Department	OCM - 20% CDF
23	22-00158	Proposed Rehabilitation of Road and Drainage at Cotabato and Tacloban Street (Portion only)	Alicia	19,048,521.27	120	Engineering Department	OCM - 20% CDF
<u>Roads – Medium A</u>							
24	22-00159	Proposed Rehabilitation (Surface Improvement) of New York, Felix Manalo, Sgt. Catolos and Detroit Streets	Immaculate Concepcion and Pinagkaisahan	42,633,130.95	90	Engineering Department	OCM - 20% CDF

1. The **QUEZON CITY LOCAL GOVERNMENT**, through *funding source of various years* intends to apply the sum stated above being the Approved Budget for the Contract (ABC) to payments under the contract *for the above stated Projects*. Bids received in excess of the ABC shall be automatically rejected at bid opening.
2. The **QUEZON CITY LOCAL GOVERNMENT** now invites bids for the above Procurement Project. Completion of the Works is required *as stated above*. Bidders should have completed a contract similar to the Project. The description of an eligible bidder is contained in the Bidding Documents, particularly, in Section II (Instructions to Bidders).
3. Bidding will be conducted through open competitive bidding procedures using non-discretionary “*pass/fail*” criterion as specified in the 2016 revised Implementing Rules and Regulations (IRR) of Republic Act (RA) No. 9184.
4. Interested bidders may obtain further information from **QUEZON CITY LOCAL GOVERNMENT – BAC Secretariat** and inspect the Bidding Documents at the address given below *weekdays from 8:00 am. – 5:00 p.m.*
5. A complete set of Bidding Documents may be acquired by interested bidders on **15 November 2022 (Tuesday)** from given address and website/s below *and upon payment of a non-refundable fee for the Bidding Documents, pursuant to the latest Guidelines issued by the GPPB*. The Procuring Entity shall allow the bidder to present its proof of payment for the fees *presented in person*.

STANDARD RATES:

Approved Budget for the Contract	Maximum Cost of Bidding Documents (in Philippine Peso)
More than 1 Million up to 5 Million	5,000.00
More than 5 Million up to 10 Million	10,000.00
More than 10 Million up to 50 Million	25,000.00
More than 50 Million up to 500 Million	50,000.00
More than 500 Million	75,000.00

The following are the requirements for purchase of Bidding Documents;

1. PhilGEPS Registration Certificate (Platinum – 3 Pages)
2. Document Request List (DRL)
3. Authorization to purchase bidding documents
 - 3.1 Secretary’s Certificate (for corporation)
 - 3.2 Special Power of Attorney (for sole proprietorship)
4. Notarized Joint Venture Agreement (if applicable)
5. Letter of Intent

It must be duly received by the BAC Secretariat at 2nd Floor, Procurement Department, Finance Building, Quezon City Hall Compound.

6. The **QC- BAC- INFRASTRUCTURE & CONSULTANCY** will hold a Pre-Bid Conference¹ on **November 23, 2022 at 10:00 AM** at **2nd Floor, Procurement Department-Bidding Room, Finance Building, Quezon City Hall Compound** or we encourage the prospective bidders to join through our **Virtual Conference (ZOOM APP)** which shall be open to prospective bidders.

Virtual Conference (ZOOM APP)
Meeting ID: 854 9489 0133
Password: 273320

¹ May be deleted in case the ABC is less than One Million Pesos (PhP1,000,000) where the Procuring Entity may not hold a pre-bid conference.

7. Bids must be duly received by the BAC Secretariat through manual submission at the office address as indicated below, on or before **December 6, 2022 – 9:00 AM**. Late bids shall not be accepted.
8. All bids must be accompanied by a bid security in any of the acceptable forms and in the amount stated in **ITB** Clause 16.
9. Bid opening shall be on **December 6, 2022 - 10:00 AM** at **2nd Floor, Procurement Department-Bidding Room, Finance Building, Quezon City Hall Compound** and/or via Zoom. Bids will be opened in the presence of the bidders' representatives who choose to attend the activity.

Virtual Conference (ZOOM APP)

Meeting ID: 810 3646 5257

Password: 201522

10. The *Quezon City Local Government* reserves the right to reject any and all bids, declare a failure of bidding, or not award the contract at any time prior to contract award in accordance with Sections 35.6 and 41 of the 2016 revised Implementing Rules and Regulations (IRR) of RA No. 9184, without thereby incurring any liability to the affected bidder or bidders.
11. For further information, please refer to:

ATTY. DOMINIC B. GARCIA

OIC, Procurement Department

2nd Floor, Procurement Department,

Finance Building, Quezon City Hall Compound

Elliptical Road, Barangay Central Diliman, Quezon City.

Tel. No. (02)8988-4242 loc. 8506/8710

Email Add: bacinfra.procurement@quezoncity.gov.ph

Website: www.quezoncity.gov.ph

12. You may visit the following websites:

For downloading of Bidding Documents: <https://quezoncity.gov.ph/public-notices/procurement/>

Sgd.

ATTY. MARK DALE DIAMOND P. PERRAL

Chairman, BAC-Infra and Consultancy

Section II. Instructions to Bidders

Notes on the Instructions to Bidders

This Section on the Instruction to Bidders (ITB) provides the information necessary for bidders to prepare responsive bids, in accordance with the requirements of the Procuring Entity. It also provides information on bid submission, eligibility check, opening and evaluation of bids, post-qualification, and on the award of contract.

1. Scope of Bid

The Procuring Entity, **Quezon City Government** invites Bids for the **PROPOSED REHABILITATION OF HERBERT BAUTISTA MULTI-PURPOSE BUILDING AT BARANGAY GREATER LAGRO**, with Project Identification Number **22-00147**.

[Note: The Project Identification Number is assigned by the Procuring Entity based on its own coding scheme and is not the same as the PhilGEPS reference number, which is generated after the posting of the bid opportunity on the PhilGEPS website.]

The Procurement Project (referred to herein as “Project”) is for the construction of Works, as described in Section VI (Specifications).

2. Funding Information

2.1. The GOP through the source of funding as indicated below for **2022** in the amount of **Five Million Seven Hundred Seventy-Seven Two Hundred Eighteen Pesos and 02/100 Cts. (P 5,777,218.02)**.

2.2. The source of funding is:

a. LGUs, the Annual or Supplemental Budget, as approved by the Sanggunian.

3. Bidding Requirements

The Bidding for the Project shall be governed by all the provisions of RA No. 9184 and its 2016 revised IRR, including its Generic Procurement Manual and associated policies, rules and regulations as the primary source thereof, while the herein clauses shall serve as the secondary source thereof.

Any amendments made to the IRR and other GPPB issuances shall be applicable only to the ongoing posting, advertisement, or invitation to bid by the BAC through the issuance of a supplemental or bid bulletin.

The Bidder, by the act of submitting its Bid, shall be deemed to have inspected the site, determined the general characteristics of the contracted Works and the conditions for this Project, such as the location and the nature of the work; (b) climatic conditions; (c) transportation facilities; (c) nature and condition of the terrain, geological conditions at the site communication facilities, requirements, location and availability of construction aggregates and other materials, labor, water, electric power and access roads; and (d) other factors that may affect the cost, duration and execution or implementation of the contract, project, or work and examine all instructions, forms, terms, and project requirements in the Bidding Documents.

4. Corrupt, Fraudulent, Collusive, Coercive, and Obstructive Practices

The Procuring Entity, as well as the Bidders and Contractors, shall observe the highest standard of ethics during the procurement and execution of the contract. They or

through an agent shall not engage in corrupt, fraudulent, collusive, coercive, and obstructive practices defined under Annex “I” of the 2016 revised IRR of RA No. 9184 or other integrity violations in competing for the Project.

5. Eligible Bidders

- 5.1. Only Bids of Bidders found to be legally, technically, and financially capable will be evaluated.
- 5.2. The Bidder must have an experience of having completed a Single Largest Completed Contract (SLCC) that is similar to this Project, equivalent to at least fifty percent (50%) of the ABC adjusted, if necessary, by the Bidder to current prices using the PSA’s CPI, except under conditions provided for in Section 23.4.2.4 of the 2016 revised IRR of RA No. 9184.

A contract is considered to be “similar” to the contract to be bid if it has the major categories of work stated in the **BDS**.

- 5.3. For Foreign-funded Procurement, the Procuring Entity and the foreign government/foreign or international financing institution may agree on another track record requirement, as specified in the Bidding Document prepared for this purpose.
- 5.4. The Bidders shall comply with the eligibility criteria under Section 23.4.2 of the 2016 IRR of RA No. 9184.

6. Origin of Associated Goods

There is no restriction on the origin of Goods other than those prohibited by a decision of the UN Security Council taken under Chapter VII of the Charter of the UN.

7. Subcontracts

- 7.1. The Bidder may subcontract portions of the Project to the extent allowed by the Procuring Entity as stated herein, but in no case more than fifty percent (50%) of the Project.

The Procuring Entity has prescribed that:

a. Subcontracting is not allowed.

- 7.1. *[If Procuring Entity has determined that subcontracting is allowed during the bidding , state:]* The Bidder must submit together with its Bid the documentary requirements of the subcontractor(s) complying with the eligibility criterial stated in **ITB** Clause 5 in accordance with Section 23.4 of the 2016 revised IRR of RA No. 9184 pursuant to Section 23.1 thereof.
- 7.2. *[If subcontracting is allowed during the contract implementation stage, state:]* The Supplier may identify its subcontractor during the contract implementation stage. Subcontractors identified during the bidding may be changed during the

implementation of this Contract. Subcontractors must submit the documentary requirements under Section 23.1 of the 2016 revised IRR of RA No. 9184 and comply with the eligibility criteria specified in **ITB** Clause 5 to the implementing or end-user unit.

- 7.3. Subcontracting of any portion of the Project does not relieve the Contractor of any liability or obligation under the Contract. The Supplier will be responsible for the acts, defaults, and negligence of any subcontractor, its agents, servants, or workmen as fully as if these were the Contractor's own acts, defaults, or negligence, or those of its agents, servants, or workmen.

8. Pre-Bid Conference

The Procuring Entity will hold a pre-bid conference for this Project on the specified date and time and either at its physical address on **November 23, 2022, 10:00 A.M. at 2nd Floor, Procurement Department-Bidding Room, Finance Building, Quezon City Hall Compound** and/or we encourage the prospective bidders to join through our **Virtual Conference (ZOOM APP) Meeting ID: 854 9489 0133 Password: 273320**

9. Clarification and Amendment of Bidding Documents

Prospective bidders may request for clarification on and/or interpretation of any part of the Bidding Documents. Such requests must be in writing and received by the Procuring Entity, either at its given address or through electronic mail indicated in the **IB**, at least ten (10) calendar days before the deadline set for the submission and receipt of Bids.

10. Documents Comprising the Bid: Eligibility and Technical Components

- 10.1. The first envelope shall contain the eligibility and technical documents of the Bid as specified in **Section IX. Checklist of Technical and Financial Documents**.
- 10.2. If the eligibility requirements or statements, the bids, and all other documents for submission to the BAC are in foreign language other than English, it must be accompanied by a translation in English, which shall be authenticated by the appropriate Philippine foreign service establishment, post, or the equivalent office having jurisdiction over the foreign bidder's affairs in the Philippines. For Contracting Parties to the Apostille Convention, only the translated documents shall be authenticated through an apostille pursuant to GPPB Resolution No. 13-2019 dated 23 May 2019. The English translation shall govern, for purposes of interpretation of the bid.
- 10.3. A valid PCAB License is required, and in case of joint ventures, a valid special PCAB License, and registration for the type and cost of the contract for this Project. Any additional type of Contractor license or permit shall be indicated in the **BDS**.

- 10.4. A List of Contractor's key personnel (e.g., Project Manager, Project Engineers, Materials Engineers, and Foremen) assigned to the contract to be bid, with their complete qualification and experience data shall be provided. These key personnel must meet the required minimum years of experience set in the **BDS**.
- 10.5. A List of Contractor's major equipment units, which are owned, leased, and/or under purchase agreements, supported by proof of ownership, certification of availability of equipment from the equipment lessor/vendor for the duration of the project, as the case may be, must meet the minimum requirements for the contract set in the **BDS**.

11. Documents Comprising the Bid: Financial Component

- 11.1. The second bid envelope shall contain the financial documents for the Bid as specified in **Section IX. Checklist of Technical and Financial Documents**.
- 11.2. Any bid exceeding the ABC indicated in paragraph 1 of the **IB** shall not be accepted.
- 11.3. For Foreign-funded procurement, a ceiling may be applied to bid prices provided the conditions are met under Section 31.2 of the 2016 revised IRR of RA No. 9184.

12. Alternative Bids

Bidders shall submit offers that comply with the requirements of the Bidding Documents, including the basic technical design as indicated in the drawings and specifications. Unless there is a value engineering clause in the **BDS**, alternative Bids shall not be accepted.

13. Bid Prices

All bid prices for the given scope of work in the Project as awarded shall be considered as fixed prices, and therefore not subject to price escalation during contract implementation, except under extraordinary circumstances as determined by the NEDA and approved by the GPPB pursuant to the revised Guidelines for Contract Price Escalation guidelines.

14. Bid and Payment Currencies

- 14.1. Bid prices may be quoted in the local currency or tradeable currency accepted by the BSP at the discretion of the Bidder. However, for purposes of bid evaluation, Bids denominated in foreign currencies shall be converted to Philippine currency based on the exchange rate as published in the BSP reference rate bulletin on the day of the bid opening.
- 14.2. *Payment of the contract price shall be made in:*
 - a. Philippine Pesos.

15. Bid Security

- 15.1. The Bidder shall submit a Bid Securing Declaration or any form of Bid Security in the amount indicated in the **BDS**, which shall be not less than the percentage of the ABC in accordance with the schedule in the **BDS**.
- 15.2. The Bid and bid security **in no case shall exceed One Hundred Twenty (120) calendar days from the date of opening of bids, unless duly extended by the bidder upon the request of the Head of the Procuring Entity (HoPE) of the Quezon City Local Government**. Any bid not accompanied by an acceptable bid security shall be rejected by the Procuring Entity as non-responsive.

16. Sealing and Marking of Bids

Each Bidder shall submit one copy of the first and second components of its Bid.

The Procuring Entity may request additional hard copies and/or electronic copies of the Bid. However, failure of the Bidders to comply with the said request shall not be a ground for disqualification.

If the Procuring Entity allows the submission of bids through online submission to the given website or any other electronic means, the Bidder shall submit an electronic copy of its Bid, which must be digitally signed. An electronic copy that cannot be opened or is corrupted shall be considered non-responsive and, thus, automatically disqualified.

17. Deadline for Submission of Bids

The Bidders shall submit on the specified date and time and either at its physical address or through online submission as indicated in paragraph **5** of the **IB**.

18. Opening and Preliminary Examination of Bids

- 18.1. The BAC shall open the Bids in public at the time, on the date, and at the place specified in paragraph 9 of the **IB**. The Bidders' representatives who are present shall sign a register evidencing their attendance. In case videoconferencing, webcasting or other similar technologies will be used, attendance of participants shall likewise be recorded by the BAC Secretariat.

In case the Bids cannot be opened as scheduled due to justifiable reasons, the rescheduling requirements under Section 29 of the 2016 revised IRR of RA No. 9184 shall prevail.

- 18.2. The preliminary examination of Bids shall be governed by Section 30 of the 2016 revised IRR of RA No. 9184.

19. Detailed Evaluation and Comparison of Bids

- 19.1. The Procuring Entity's BAC shall immediately conduct a detailed evaluation of all Bids rated "*passed*" using non-discretionary pass/fail criteria. The BAC shall consider the conditions in the evaluation of Bids under Section 32.2 of 2016 revised IRR of RA No. 9184.
- 19.2. If the Project allows partial bids, all Bids and combinations of Bids as indicated in the **BDS** shall be received by the same deadline and opened and evaluated simultaneously so as to determine the Bid or combination of Bids offering the lowest calculated cost to the Procuring Entity. Bid Security as required by **ITB** Clause 15 shall be submitted for each contract (lot) separately.
- 19.3. In all cases, the NFCC computation pursuant to Section 23.4.2.6 of the 2016 revised IRR of RA No. 9184 must be sufficient for the total of the ABCs for all the lots participated in by the prospective Bidder.

20. Post Qualification

Within a non-extendible period of five (5) calendar days from receipt by the Bidder of the notice from the BAC that it submitted the Lowest Calculated Bid, the Bidder shall submit its latest income and business tax returns filed and paid through the BIR Electronic Filing and Payment System (eFPS), and other appropriate licenses and permits required by law and stated in the **BDS**.

21. Signing of the Contract

The documents required in Section 37.2 of the 2016 revised IRR of RA No. 9184 shall form part of the Contract. Additional Contract documents are indicated in the **BDS**.

Section III. Bid Data Sheet

Notes on the Bid Data Sheet (BDS)

The Bid Data Sheet (BDS) consists of provisions that supplement, amend, or specify in detail, information, or requirements included in the ITB found in Section II, which are specific to each procurement.

This Section is intended to assist the Procuring Entity in providing the specific information in relation to corresponding clauses in the ITB and has to be prepared for each specific procurement.

The Procuring Entity should specify in the BDS information and requirements specific to the circumstances of the Procuring Entity, the processing of the procurement, and the bid evaluation criteria that will apply to the Bids. In preparing the BDS, the following aspects should be checked:

- a. Information that specifies and complements provisions of the ITB must be incorporated.
- b. Amendments and/or supplements, if any, to provisions of the ITB as necessitated by the circumstances of the specific procurement, must also be incorporated.

Bid Data Sheet

ITB Clause																																					
5.2	For this purpose, similar contracts shall refer to contracts which have the same major categories of work.																																				
7.1	Subcontracting is not allowed.																																				
10.3	<i>No additional contractor license or permit is required</i> <i>In addition, eligible bidders shall qualify or comply with the following:</i> 1. Bidders with valid Philippine Contractors Accreditation Board (PCAB) Type Building - Small B																																				
10.4	<table><tr><td colspan="4">The minimum work experience requirements for key personnel are the following:</td></tr><tr><td>Qty.</td><td>Key Personnel</td><td>General Experience</td><td>Relevant Experience</td></tr><tr><td>1</td><td>Project-in-Charge/</td><td>3 years</td><td>3 years</td></tr><tr><td>1</td><td>General Foreman</td><td>3 years</td><td>3 years</td></tr><tr><td>1</td><td>Trade Engineer/Leadman for civil works</td><td>3 years</td><td>3 years</td></tr><tr><td>1</td><td>Trade Engineer/Leadman for electrical works</td><td>3 years</td><td>3 years</td></tr><tr><td>1</td><td>Safety Officer</td><td>3 years</td><td>3 years</td></tr><tr><td>1</td><td>DPWH duly accredited Materials Engineer</td><td>3 years</td><td>3 years</td></tr><tr><td colspan="4"><i>In addition, the bidder must execute an affidavit of undertaking duly notarized stating that the foregoing personnel shall perform work exclusively for the project until its completion. Please see attached bid forms.</i></td></tr></table>	The minimum work experience requirements for key personnel are the following:				Qty.	Key Personnel	General Experience	Relevant Experience	1	Project-in-Charge/	3 years	3 years	1	General Foreman	3 years	3 years	1	Trade Engineer/Leadman for civil works	3 years	3 years	1	Trade Engineer/Leadman for electrical works	3 years	3 years	1	Safety Officer	3 years	3 years	1	DPWH duly accredited Materials Engineer	3 years	3 years	<i>In addition, the bidder must execute an affidavit of undertaking duly notarized stating that the foregoing personnel shall perform work exclusively for the project until its completion. Please see attached bid forms.</i>			
The minimum work experience requirements for key personnel are the following:																																					
Qty.	Key Personnel	General Experience	Relevant Experience																																		
1	Project-in-Charge/	3 years	3 years																																		
1	General Foreman	3 years	3 years																																		
1	Trade Engineer/Leadman for civil works	3 years	3 years																																		
1	Trade Engineer/Leadman for electrical works	3 years	3 years																																		
1	Safety Officer	3 years	3 years																																		
1	DPWH duly accredited Materials Engineer	3 years	3 years																																		
<i>In addition, the bidder must execute an affidavit of undertaking duly notarized stating that the foregoing personnel shall perform work exclusively for the project until its completion. Please see attached bid forms.</i>																																					
10.5	<table><tr><td colspan="3">The minimum major equipment requirements are the following:</td></tr><tr><td>Equipment</td><td>Capacity</td><td>Number of Units</td></tr><tr><td>Dump Truck</td><td></td><td>1</td></tr><tr><td>Jackhammer</td><td></td><td>1</td></tr><tr><td colspan="3"><i>In addition, the bidder must execute an affidavit of undertaking duly notarized stating that the foregoing equipment shall be used exclusively for the project until its completion. Please see attached bid forms.</i></td></tr></table>	The minimum major equipment requirements are the following:			Equipment	Capacity	Number of Units	Dump Truck		1	Jackhammer		1	<i>In addition, the bidder must execute an affidavit of undertaking duly notarized stating that the foregoing equipment shall be used exclusively for the project until its completion. Please see attached bid forms.</i>																							
The minimum major equipment requirements are the following:																																					
Equipment	Capacity	Number of Units																																			
Dump Truck		1																																			
Jackhammer		1																																			
<i>In addition, the bidder must execute an affidavit of undertaking duly notarized stating that the foregoing equipment shall be used exclusively for the project until its completion. Please see attached bid forms.</i>																																					

12	<i>[Insert Value Engineering clause if allowed.]</i>
15.1	<p>The bid security shall be in the form of a Bid Securing Declaration with project number, or any of the following forms and amounts:</p> <ul style="list-style-type: none"> a) The amount of not less than Php 115,544.36 or equivalent to two percent (2%) of ABC if bid security is in cash, cashier's/manager's check, bank draft/guarantee or irrevocable letter of credit; or b) The amount of not less than Php 288,860.90 or equivalent to five percent (5%) of ABC if bid security is in Surety Bond.
19.2	Partial bid is not allowed. The infrastructure project is packaged in a single lot and the lot shall not be divided into sub-lots for the purpose of bidding, evaluation, and contract award.
20	No additional requirement.
21	<p>Additional Contract Documents relevant to the Project as required:</p> <ol style="list-style-type: none"> 1. Construction Schedule and S-curve, 2. Manpower Schedule, 3. Construction Methods, 4. Equipment Utilization Schedule, 5. PERT/CPM or other acceptable tools of project scheduling, shall be included in the submission of Technical Proposal.

Section IV. General Conditions of Contract

Notes on the General Conditions of Contract

The General Conditions of Contract (GCC) in this Section, read in conjunction with the Special Conditions of Contract in Section V and other documents listed therein, should be a complete document expressing all the rights and obligations of the parties.

Matters governing performance of the Contractor, payments under the contract, or matters affecting the risks, rights, and obligations of the parties under the contract are included in the GCC and Special Conditions of Contract.

Any complementary information, which may be needed, shall be introduced only through the Special Conditions of Contract.

1. Scope of Contract

This Contract shall include all such items, although not specifically mentioned, that can be reasonably inferred as being required for its completion as if such items were expressly mentioned herein. All the provisions of RA No. 9184 and its 2016 revised IRR, including the Generic Procurement Manual, and associated issuances, constitute the primary source for the terms and conditions of the Contract, and thus, applicable in contract implementation. Herein clauses shall serve as the secondary source for the terms and conditions of the Contract.

This is without prejudice to Sections 74.1 and 74.2 of the 2016 revised IRR of RA No. 9184 allowing the GPPB to amend the IRR, which shall be applied to all procurement activities, the advertisement, posting, or invitation of which were issued after the effectivity of the said amendment.

2. Sectional Completion of Works

If sectional completion is specified in the **Special Conditions of Contract (SCC)**, references in the Conditions of Contract to the Works, the Completion Date, and the Intended Completion Date shall apply to any Section of the Works (other than references to the Completion Date and Intended Completion Date for the whole of the Works).

3. Possession of Site

3.1 The Procuring Entity shall give possession of all or parts of the Site to the Contractor based on the schedule of delivery indicated in the **SCC**, which corresponds to the execution of the Works. If the Contractor suffers delay or incurs cost from failure on the part of the Procuring Entity to give possession in accordance with the terms of this clause, the Procuring Entity's Representative shall give the Contractor a Contract Time Extension and certify such sum as fair to cover the cost incurred, which sum shall be paid by Procuring Entity.

3.2 If possession of a portion is not given by the above date, the Procuring Entity will be deemed to have delayed the start of the relevant activities. The resulting adjustments in contract time to address such delay may be addressed through contract extension provided under Annex "E" of the 2016 revised IRR of RA No. 9184.

4. The Contractor's Obligations

The Contractor shall employ the key personnel named in the Schedule of Key Personnel indicating their designation, in accordance with **ITB** Clause 10.3 and specified in the **BDS**, to carry out the supervision of the Works.

The Procuring Entity will approve any proposed replacement of key personnel only if their relevant qualifications and abilities are equal to or better than those of the personnel listed in the Schedule.

5. Performance Security

- 5.1. Within ten (10) calendar days from receipt of the Notice of Award from the Procuring Entity but in no case later than the signing of the contract by both parties, the successful Bidder shall furnish the performance security in any of the forms prescribed in Section 39 of the 2016 revised IRR.
- 5.2. The Contractor, by entering into the Contract with the Procuring Entity, acknowledges the right of the Procuring Entity to institute action pursuant to RA No. 3688 against any subcontractor be they an individual, firm, partnership, corporation, or association supplying the Contractor with labor, materials and/or equipment for the performance of this Contract.

6. Site Investigation Reports

The Contractor, in preparing the Bid, shall rely on any Site Investigation Reports referred to in the SCC supplemented by any information obtained by the Contractor.

7. Warranty

- 7.1. In case the Contractor fails to undertake the repair works under Section 62.2.2 of the 2016 revised IRR, the Procuring Entity shall forfeit its performance security, subject its property(ies) to attachment or garnishment proceedings, and perpetually disqualify it from participating in any public bidding. All payables of the GOP in his favor shall be offset to recover the costs.
- 7.2. The warranty against Structural Defects/Failures, except that occasioned-on force majeure, shall cover the period from the date of issuance of the Certificate of Final Acceptance by the Procuring Entity. Specific duration of the warranty is found in the SCC.

8. Liability of the Contractor

Subject to additional provisions, if any, set forth in the SCC, the Contractor's liability under this Contract shall be as provided by the laws of the Republic of the Philippines.

If the Contractor is a joint venture, all partners to the joint venture shall be jointly and severally liable to the Procuring Entity.

9. Termination for Other Causes

Contract termination shall be initiated in case it is determined *prima facie* by the Procuring Entity that the Contractor has engaged, before, or during the implementation of the contract, in unlawful deeds and behaviors relative to contract acquisition and implementation, such as, but not limited to corrupt, fraudulent, collusive, coercive, and obstructive practices as stated in ITB Clause 4.

10. Dayworks

Subject to the guidelines on Variation Order in Annex “E” of the 2016 revised IRR of RA No. 9184, and if applicable as indicated in the **SCC**, the Dayworks rates in the Contractor’s Bid shall be used for small additional amounts of work only when the Procuring Entity’s Representative has given written instructions in advance for additional work to be paid for in that way.

11. Program of Work

- 11.1. The Contractor shall submit to the Procuring Entity’s Representative for approval the said Program of Work showing the general methods, arrangements, order, and timing for all the activities in the Works. The submissions of the Program of Work are indicated in the **SCC**.
- 11.2. The Contractor shall submit to the Procuring Entity’s Representative for approval an updated Program of Work at intervals no longer than the period stated in the **SCC**. If the Contractor does not submit an updated Program of Work within this period, the Procuring Entity’s Representative may withhold the amount stated in the **SCC** from the next payment certificate and continue to withhold this amount until the next payment after the date on which the overdue Program of Work has been submitted.

12. Instructions, Inspections and Audits

The Contractor shall permit the GOP or the Procuring Entity to inspect the Contractor’s accounts and records relating to the performance of the Contractor and to have them audited by auditors of the GOP or the Procuring Entity, as may be required.

13. Advance Payment

The Procuring Entity shall, upon a written request of the Contractor which shall be submitted as a Contract document, make an advance payment to the Contractor in an amount not exceeding fifteen percent (15%) of the total contract price, to be made in lump sum, or at the most two installments according to a schedule specified in the **SCC**, subject to the requirements in Annex “E” of the 2016 revised IRR of RA No. 9184.

14. Progress Payments

The Contractor may submit a request for payment for Work accomplished. Such requests for payment shall be verified and certified by the Procuring Entity’s Representative/Project Engineer. Except as otherwise stipulated in the **SCC**, materials and equipment delivered on the site but not completely put in place shall not be included for payment.

15. Operating and Maintenance Manuals

- 15.1. If required, the Contractor will provide “as built” Drawings and/or operating and maintenance manuals as specified in the **SCC**.

- 15.2. If the Contractor does not provide the Drawings and/or manuals by the dates stated above, or they do not receive the Procuring Entity's Representative's approval, the Procuring Entity's Representative may withhold the amount stated in the **SCC** from payments due to the Contractor.

Section V. Special Conditions of Contract

Notes on the Special Conditions of Contract

Similar to the BDS, the clauses in this Section are intended to assist the Procuring Entity in providing contract-specific information in relation to corresponding clauses in the GCC found in Section IV.

The Special Conditions of Contract (SCC) complement the GCC, specifying contractual requirements linked to the special circumstances of the Procuring Entity, the Procuring Entity's country, the sector, and the Works procured. In preparing this Section, the following aspects should be checked:

- a. Information that complements provisions of the GCC must be incorporated.
- b. Amendments and/or supplements to provisions of the GCC as necessitated by the circumstances of the specific purchase, must also be incorporated.

However, no special condition which defeats or negates the general intent and purpose of the provisions of the GCC should be incorporated herein.

Special Conditions of Contract

GCC Clause	
2	Completion of work shall be within 120 calendar days.
4.1	The Procuring Entity shall give possession of all parts of the Site to the Contractor upon receipt of the Notice to Proceed.
6	The site investigation reports are: <i>[list here the required site investigation reports.]</i>
7.2	<p><i>[Select one, delete the other.]</i></p> <p><i>[In case of permanent structures, such as buildings of types 4 and 5 as classified under the National Building Code of the Philippines and other structures made of steel, iron, or concrete which comply with relevant structural codes (e.g., DPWH Standard Specifications), such as, but not limited to, steel/concrete bridges, flyovers, aircraft movement areas, ports, dams, tunnels, filtration and treatment plants, sewerage systems, power plants, transmission and communication towers, railway system, and other similar permanent structures:]</i> Fifteen (15) years.</p> <p><i>[In case of semi-permanent structures, such as buildings of types 1, 2, and 3 as classified under the National Building Code of the Philippines, concrete/asphalt roads, concrete river control, drainage, irrigation lined canals, river landing, deep wells, rock causeway, pedestrian overpass, and other similar semi-permanent structures:]</i> Five (5) years.</p> <p><i>[In case of other structures, such as bailey and wooden bridges, shallow wells, spring developments, and other similar structures:]</i> Two (2) years.</p>
10	Dayworks are applicable at the rate shown in the Contractor's original Bid.
13	The amount of the advance payment is no more that fifteen percent (15%) of the Contract Price subject to approval by the HOPE and compliance with the conditions under RA 9184 and its IRR.
14	No further instructions.
15.1	<p>The date by which operating and maintenance manuals are required is <i>thirty (30) days</i></p> <p>The date by which "as built" drawings are required as part of final payment</p>
15.2	The amount to be withheld for failing to produce "as built" drawings and/or operating and maintenance manuals by the date required is ten (10%) percent of the contract price.

Section VI. Specifications

Notes on Specifications

A set of precise and clear specifications is a prerequisite for Bidders to respond realistically and competitively to the requirements of the Procuring Entity without qualifying or conditioning their Bids. In the context of international competitive bidding, the specifications must be drafted to permit the widest possible competition and, at the same time, present a clear statement of the required standards of workmanship, materials, and performance of the goods and services to be procured. Only if this is done will the objectives of economy, efficiency, and fairness in procurement be realized, responsiveness of Bids be ensured, and the subsequent task of bid evaluation facilitated. The specifications should require that all goods and materials to be incorporated in the Works be new, unused, of the most recent or current models, and incorporate all recent improvements in design and materials unless provided otherwise in the Contract.

Samples of specifications from previous similar projects are useful in this respect. The use of metric units is mandatory. Most specifications are normally written specially by the Procuring Entity or its representative to suit the Works at hand. There is no standard set of Specifications for universal application in all sectors in all regions, but there are established principles and practices, which are reflected in these PBDs.

There are considerable advantages in standardizing General Specifications for repetitive Works in recognized public sectors, such as highways, ports, railways, urban housing, irrigation, and water supply, in the same country or region where similar conditions prevail. The General Specifications should cover all classes of workmanship, materials, and equipment commonly involved in construction, although not necessarily to be used in a particular Works Contract. Deletions or addenda should then adapt the General Specifications to the particular Works.

Care must be taken in drafting specifications to ensure that they are not restrictive. In the specification of standards for goods, materials, and workmanship, recognized international standards should be used as much as possible. Where other particular standards are used, whether national standards or other standards, the specifications should state that goods, materials, and workmanship that meet other authoritative standards, and which ensure substantially equal or higher quality than the standards mentioned, will also be acceptable. The following clause may be inserted in the SCC.

Sample Clause: Equivalency of Standards and Codes

Wherever reference is made in the Contract to specific standards and codes to be met by the goods and materials to be furnished, and work performed or tested, the provisions of the latest current edition or revision of the relevant standards and codes in effect shall apply, unless otherwise expressly stated in the Contract. Where such standards and codes are national, or relate to a particular country or region, other authoritative standards that ensure a substantially equal or higher quality than the standards and codes specified will be accepted

subject to the Procuring Entity's Representative's prior review and written consent. Differences between the standards specified and the proposed alternative standards shall be fully described in writing by the Contractor and submitted to the Procuring Entity's Representative at least twenty-eight (28) days prior to the date when the Contractor desires the Procuring Entity's Representative's consent. In the event the Procuring Entity's Representative determines that such proposed deviations do not ensure substantially equal or higher quality, the Contractor shall comply with the standards specified in the documents.

These notes are intended only as information for the Procuring Entity or the person drafting the Bidding Documents. They should not be included in the final Bidding Documents.



Republic of the Philippines
Quezon City
CITY ENGINEERING DEPARTMENT

Civic Center Building 8, Quezon City Hall Compound, Elliptical Road
 Diliman, Central 1100 Quezon City
 Trunk line: +63 2 8968 4242



TECHNICAL SPECIFICATIONS

QUEZON CITY INFRASTRUCTURE PROJECT

PROJECT TITLE: PROPOSED REHABILITATION OF HERBERT BAUTISTA MULTI-PURPOSE BUILDING AT BARANGAY GREATER LAGRO

LOCATION: BARANGAY GREATER LAGRO, DISTRICT 5, QUEZON CITY

GR. GENERAL REQUIREMENTS

- a. Comply with the current and existing laws, ordinances and applicable codes, rules and regulations and standards. Any works perform contrary to the existing laws, rules and regulations, ordinances and standards without notice shall bear all cost arising therefrom.
- b. Drawings, specifications, codes and standards are minimum requirements. Where requirements differ, the more stringent apply.
- c. Should there be any change(s) in drawings or specifications, it is required to comply with the governing regulations, notify the implementing agency.
- d. Photographs shall be taken as, when and where directed at intervals of not more than one month. The photographs shall be sufficient in number and location to record the exact progress of the works. The photographs shall be retained and will become the property of the Government.
- e. Site verification / inspection shall be conducted to validate the scope of works. No extra compensation and extension of time shall be given due to negligence or inadvertence.
- f. The quality of materials shall be of the best grade of their respective kinds for the purpose. The work shall also be performed in the best and most capable manner in strict accordance with requirements of the plans and details. All materials not conforming to the requirements of these specifications shall be considered as defective.
- g. All equipment and installations shall meet or exceed minimum requirements of the standards and codes.
- h. Mobilization and Demobilization (if applicable)
 - i. Mobilization shall include all activities and related costs for transportation of personnel, equipment, and operating supplies to the site, establishment of offices, buildings, and other necessary general facilities for the operations at the site.
 - ii. Demobilization shall include all activities and costs for transportation of personnel, equipment, and supplies not anymore required within the construction site including the disassembly, removal and site clean-up of offices and other facilities assembled on the site specifically for this contract.
- i. Execute work in strict accordance with the best practices of the trades in a thorough, substantial, workmanlike manner by competent workmen. Provide a competent, experienced, full-time supervisor who is authorized to make decisions on behalf of the Contractor.

j. Temporary Facilities and Utilities

- i. All facilities shall be near the job site, where necessary and shall conform to the best standard for the required types.
 - ii. Temporary facilities shall be provided and maintained including sanitary facilities and first aid stations
 - iii. Temporary utilities shall be sufficiently provided until the completion of the project such as water, power and communication.
 - iv. Temporary enclosure shall be provided within the construction site with adequate guard lights, railings and proper signages
 - v. Temporary roadways shall be constructed and maintained to sustain loads to be carried on them during the entire construction period
 - vi. Upon completion of the work, the temporary facilities shall be demolished, hauled-out and disposed properly.
- k. Adequate construction safety and health protection shall be provided at all times during the execution of work to both workers and property.
- i. A fully trained Medical Aide shall be employed permanently on the site who shall be engaged solely from medical duties.
 - ii. The medical room shall be provided in waterproof; it could be a building or room designated and used exclusively for the purpose and have a floor area of at least 15 square meters and a glazed window area of at least 2 square meters.
 - iii. The location of the medical room and any other arrangements shall be made known to all employees by posting on prominent locations suitable notices in the site.
 - iv. Additional safety precautions shall be provided in the observance of pandemic. Protocols set-forth by the government shall be strictly followed.
- l. Necessary protections to the adjacent property shall be provided to avoid untoward incidents / accidents.
- m. Final cleaning of the work shall be employed prior to the final inspection for certification of final acceptance. Final cleaning shall be applied on each surface or unit of work and shall be of condition expected for a building cleaning and maintenance program

SW. SITE WORKS

A. All grades, lines, levels and dimensions shall be verified as indicated on the plans and details. Any discrepancies or inconsistencies shall be reported before commencing to work.

B. Removal / demolition of existing structures shall be done in accordance to safety procedures.

CWS. CIVIL / STRUCTURAL WORKS

CWSMA. MASONRY WORKS

1. Masonry Units (Concrete Hollow Blocks)

a. 100mm thick for all interior walls and 150mm thick for all exterior walls unless otherwise indicated.

b Use 400 psi for non-load bearing blocks and 700 psi for load bearing blocks where required.

c. Where full height walls are constructed with concrete hollow blocks, these shall extend up to the bottom of beam or slab unless otherwise indicated on plans. Provide stiffener columns and lintel beams as specified in the structural drawings or as specified or as deemed required to assure a stabilized wall due to height and other considerations

2. Sand:

S-1, washed, clean and greenish in color

3. Mortar:

One part Portland cement and two parts sand and water but not more than three parts sand and water

4 Reinforcement

The concrete hollow blocks shall be reinforced with 10mm diameter deformed bar, spaced not more than 0.8m on centers, both ways

5. Plaster bond:

The mixture of cement plaster for concrete hollow block wall finishes indicated in the drawings shall be one part Portland cement and three parts sand.

5. Floor Topping Preparation for Tilework. One part Portland cement and two parts sand and water but not more than three parts sand and water.

CWSPRW. ROOFING WORKS

1. Corrugated galvanized iron (G.I.) sheets, including plain aluminum sheets for roofing accessories shall be cold-rolled meeting ASTM A-153 and with spelter coating of zinc of not less than 0.381 kg/sq.m. (1.25 ounce/sq ft.) conforming to ASTM A-525 or pms 67-1985. Unless otherwise specified or shown on Plans, roofing sheets shall be gauge 26 (0.48mm thick) and provided in long span sizes to minimize end laps. Sheets shall weigh not less than 3.74 kg/sq.m. and shall be marked or stamped showing the gauge, size amount of zinc coating, brand and name of manufacturer. Test specimens shall stand being bent through 180 degrees flat on itself without fracture of the base metal and without flaking of the zinc coating.

2. Ridge/hip rolls, valleys, flashing and counter flashings, gutters and downspouts, whenever required, shall be fabricated from plain G.I. sheets. Ridge/hip rolls, flashings and counter flashings shall be gauge 26. Valleys, gutters and downspouts shall be gauge 24 unless otherwise specified on Plans. Wire basket strainers shall be galvanized, gauge 24.

Roof ventilators, whenever required shall be fabricated from gauge 26 plain G.I. sheets and constructed to the dimensions and details shown on Plans

3. The roofing shall be secured to the purlins with min. 2 1/2" max. 3" long Tek screws. Provide all-purpose sealant under the fasteners. Ridge rolls, hip rolls and valleys to be used shall be those compatible with the Ga. 24 pre-painted G.I. rib-type roofing sheets. They shall lap the roofing sheets at least 250mm. The ridge rolls, hip rolls and valleys shall be riveted to the roofing sheets

4. Polycarbonate roofing and sunbreakers shall be covered with 6mm thick Rib-type polycarbonate sheets as shown on the plans. The roofing shall be secured to the purlins with min. 2 1/2" max. 3" long Tek screws. Provide all-purpose sealant under the fasteners. Ridge rolls, hip rolls and valleys to be used shall be those compatible with the 6mm thick solid polycarbonate sheets. They shall lap the roofing sheets at least 250mm. The ridge rolls, hip rolls and valleys shall be riveted to the roofing sheets

5. All roofing sheets adjacent to concrete hollow block and other masonry walls such as property line firewalls, shall be provided with Gauge 26 pre-painted plain G.I. Flashing to extend to the top and over to the other side of the wall. All fasteners shall be placed at the top of the corrugations of the roofing sheets to prevent water from standing around the fasteners.

6. Provide 6mm thick thermal insulation with single-side aluminum foil prior to fastening of roofing sheets to serve as thermal protection.

CWSME, METAL WORKS**1 Materials.**

a. Steel and Iron. If not specified otherwise, use standard mill-finished structural steel shapes or bar iron in compliance with AISC Specifications for Design, Fabrication and Erection of Structural Steel for buildings.

b. Bolts, Nuts, Studs and Rivets. ASTM A 307 and A 325.

c. Screws. Fed. Spec. FF-S-85, Fed. Spec. FF-S-92, and Fed. Spec. FF-S-111.

d. Metal Purlins. High grade galvanized steel with minimum tensile strength of 275 MPa. 1.4mm in thickness or approved equal.

2. Fabrication:

By mechanics skilled in the trade and in accordance with the manufacturer's directions. Metalwork shall be fabricated to allow for expansion and contraction of materials. Provide welding and bracing of adequate strength and durability, with tight, flush joints, dressed smooth and clean. Complete with bolts and nuts.

3. Metal Surfaces:

Surfaces shall be clean and free from all scale, flake, rust and rust pitting; well-formed and finished to shape and size, with sharp lines, angle and smooth surface. Shearing and punching shall leave clean true lines and surfaces. Weld or rivet permanent connections. Weld and flush rivets shall be used and finished flush smooth on surfaces that will be exposed after installation. Do not use screws or bolts where they can be avoided; when used, heads shall be countersunk, screwed up tight and threads nicked to prevent loosening.

4. Construction:

Thickness of metals and details of assembly and supports shall give ample strength and stiffness for the minimum loads specified or indicated. Joints exposed to weather shall be formed to exclude water.

5. Welding:

Use welding electrode E70XX and perform welding, welding inspection and corrective welding in accordance with AWS D1.1. Weld in a manner to prevent permanent distortion of the connected parts. Weld continuously along the entire area of contact (except where tack welding is permitted). Do not tack weld exposed to connections). Grind smooth visible weld in finished installation.

CWSMPW, WATERPROOFING**1 WATERPROOFING**

a. Cementitious waterproofing powder mix shall be cement-based, aggregate-type, heavy duty, waterproof coating for reinforced concrete surface and masonry exposed to water. Additive binders shall be of special formulation of acrylic polymers and modifiers in liquid form used as additive with cement-based powder mix that improves adhesion and mechanical properties. Water shall be clean, clear and potable.

b. Concrete surface to be applied with waterproofing shall be structurally sound, clean and free of dirt, loose mortar particles, paint films, oil, protective coats, efflorescence, laitance, etc. All defects shall be properly corrected and carefully formed to provide a smooth surface that is free of marks and properly cured prior to application works.

c. Furnish all labor, materials, equipment, plant and other facilities required to complete all waterproofing work as shown on the drawings and herein specified. All applications shall be strictly performed by an approved waterproofing Contractor.

d. Test waterproofed area by seventy-two (72) hours and check for any seepages

Note: Thickness should be as per Manufacturer's Specifications and Installation depending on the areas to be applied with

2. VAPOR BARRIER

a. Vapor barrier shall be placement of 8mil Polyethylene sheet prior to pouring of concrete for foundation members, slabs-on-fill and slabs-on-grade.

AW. ARCHITECTURAL WORKS

AW02. CEILING FINISHES

1. Fiber Cement Board on Metal Frame. The ceiling materials to be used shall conform to the samples approved by the City Engineer. All ceiling works shall be done by men experienced and qualified to do this particular specialty trade. The installation of ceiling materials shall be in accordance with the detailed section and with the manufacturer's manual instructions. Ceiling materials shall be cut as required to fit the perpendicular condition and should be properly secured by anchorage and other accessories to complete the installation. No mechanical work shall be exposed on the finish work. All joints around electrical outlets, pipes and other works extending through materials shall be sealed with caulking.

2. Moisture-Resistant Gypsum Board on Metal Frame. The ceiling materials to be used shall conform to the samples approved by the City Engineer. All ceiling works shall be done by men experienced and qualified to do this particular specialty trade. The installation of ceiling materials shall be in accordance with the detailed section and with the manufacturer's manual instructions. Ceiling materials shall be cut as required to fit the perpendicular condition and should be properly secured by anchorage and other accessories to complete the installation. No mechanical work shall be exposed on the finish work. All joints around electrical outlets, pipes and other works extending through materials shall be sealed with caulking.

3. Gypsum Board on Metal Frame. The ceiling materials to be used shall conform to the samples approved by the City Engineer. All ceiling works shall be done by men experienced and qualified to do this particular specialty trade. The installation of ceiling materials shall be in accordance with the detailed section and with the manufacturer's manual instructions. Ceiling materials shall be cut as required to fit the perpendicular condition and should be properly secured by anchorage and other accessories to complete the installation. No mechanical work shall be exposed on the finish work. All joints around electrical outlets, pipes and other works extending through materials shall be sealed with caulking.

4. Acoustic Board Ceiling on T-Runner Frame. The ceiling materials to be used shall conform to the samples approved by the City Engineer. All ceiling works shall be done by men experienced and qualified to do this particular specialty trade. The installation of ceiling materials shall be in accordance with the detailed section and with the manufacturer's manual instructions. Ceiling materials shall be cut as required to fit the perpendicular condition and should be properly secured by anchorage and other accessories to complete the installation. No mechanical work shall be exposed on the finish work. All joints around electrical outlets, pipes and other works extending through materials shall be sealed with caulking.

AWP. PAINTING WORKS

1. Paint Materials. All types of paint material and other related products shall be subject to test as to material composition by the Bureau of Research and Standard, DPWH or the National Institute of Science and Technology.

2. Tinting Colors. Tinting colors shall be first grade quality pigment ground in alkyd resin that disperses and mixes easily with paint to produce the color desired. Use the same brand of paint and tinting color to effect good paint body.

3. Skim coat. Skim coat shall be fine powder type material like kalsomine that can be mixed into putty consistency, with oil-based primers and paints to fill minor surface dents and imperfections.

4 Paint Schedule.

a. Exterior Masonry Wall (plain cement plastered finish to be painted)

i. 1 coat skim coating, 1 coat primer, 2 coats elastomeric paint finish

b. Interior Masonry Wall (plain cement plastered finish to be painted)

i. 1 coat skim coating, 1 coat primer, 2 coats latex paint finish

c. Interior Dry Wall

i. 1 coat primer, 2 coats latex paint finish

d. Ceiling Boards

i. 1 coat primer, 2 coats latex paint finish

e. Slab Soffit

i. 1 coat primer, 2 coats latex paint finish

f. Metal / Steel Surfaces

i. 1 coat primer, 2 coats epoxy enamel finish

5. Surface Preparation. All surfaces shall be in proper condition to receive the finish. Woodworks shall be hand-sanded smooth and dusted clean. All knot-holes pitch pockets or sappy portions shall be sealed with natural wood filler. Nail holes, cracks or defects shall be carefully puttied after the first coat, matching the color of paint.

Interior woodworks shall be sanded between coats. Cracks, holes or imperfections in plaster shall be filled with patching compound and smoothed off to match adjoining surfaces.

Concrete and masonry surfaces shall be coated with concrete neutralizer and allowed to dry before any painting primer coat is applied. When surface is dried apply first coating. Hairline cracks and unevenness shall be patched and sealed with approved putty or patching compound. After all defects are corrected apply the finish coats as specified on the Plans (color scheme approved).

Metal shall be clean, dry and free from mill scale and rust. Remove all grease and oil from surfaces. Wash, unprimed galvanized metal with etching solution and allow it to dry. Where required to prime coat surface with Red Lead Primer same shall be approved by the Engineer.

In addition, the Contractor shall undertake the following

a. Voids, cracks, nick etc. will be repaired with proper patching material and finished flush with surrounding surfaces

b. Marred or damaged shop coats on metal shall be spot primed with appropriate metal primer.

c. Painting and varnishing works shall not be commenced when it is too hot or cold

d. Allow appropriate ventilation during application and drying period

e. All hardware will be fitted and removed or protected prior to painting and varnishing works

6. Application. Paints when applied by brush shall become non-fluid, thick enough to lay down as adequate film of wet paint. Brush marks shall have flowed out after application of paint.

Paints made for application by roller must be similar to brushing paint. It must be non-sticky when thinned to spraying viscosity so that it will break up easily into droplets.

Paint is atomized by high pressure pumping rather than broken up by the large volume of air mixed with it. This procedure changes the required properties of the paint,

7. Application shall be as per paint Manufacturer's specification and recommendation.
8. Provide all drop cloth and other covering requisite for protection of floors, walls, aluminum, glass, finishes and other works.
9. All applications and methods used shall strictly follow the Manufacturer's Instructions and Specifications.
10. All surfaces including masonry wall shall be thoroughly cleaned, puffed, sandpapered, rubbed and polished; masonry wall shall be treated with Neutralizer.
11. All exposed finish hardware, lighting fixtures and accessories, glass and the like shall be adequately protected so that these are not stained with paint and other painting materials prior to painting works.
12. All other surfaces endangered by stains and paint marks should be taped and covered with craft paper.

AWD/W FABRICATED DOORS & WINDOWS

All doors and windows must be in approved quality as specified in the plan and program of works.

S/PW. SANITARY / PLUMBING WORKS

- A. Comply with the current applicable codes, ordinances, and regulations of the authority or authorities having jurisdiction, the rules, regulations and requirements of the utility companies (as applicable).
- B. Supply, installation and testing of the following:
 - B.1 Potable water supply system complete in all respects including but not limited to submittals, shop drawings, piping, water meters, valves, bibbs, insulation, all accessories required for complete and operational of the system.
 - B.2 Water service connections including but not limited to water meters, float valves. Any and all other works involve in providing the complete operation of the water supply system.
 - B.3 Soil waste and vent system complete in all respect including but not limited to connection to existing sewer submittals, shop drawings, pipes, fittings, valves, cleanout, drains, etc. Complete and operational.
 - B.4 Storm drainage system complete in all respect including but not limited to connection to existing storm drainage, submittals, shop drawings, pipes, fittings, valves, cleanout, drains, etc. Complete and operational.
- C. Workmanship and installation methods shall conform to the best modern practice. Employ skilled tradesmen to perform work under the direct supervision of fully qualified personnel.
- D. All equipment and installations shall meet or exceed minimum requirements of the Standards and Codes as specified in plans and program of work.
- E. Install equipment in strict accordance with manufacturers written recommendations.
- F. Physical sizes of all plant and equipment are to be suitable for the space allocated for the accommodation of such plant and equipment, taking into account the requirement of access for maintenance purposes.
- G. In selecting makes and types of equipment, the Contractor shall ascertain that facilities for proper maintenance, repair and replacement are provided.

M. Where the Contractor proposes to use an item of equipment other than that specified or detailed in the drawing, which requires any redesign of the system, drawings showing the layout of the equipment and such redesign as required therefore shall be prepared by the Contractor at his own expenses. Where such approved deviation necessitates a different quantity and arrangement of materials and equipment's from that originally specified or indicated in the drawings, the Contractor shall furnish and install any such additional materials and equipment's required by the system at no additional cost.

N. Equipment catalogue and manufacturer's specifications must be submitted for examination and details shall be submitted for approval before any equipment is to be ordered.

O. This shall include all information necessary to ascertain the equipment comply with this specification and drawings. Data and sales catalogue of a general nature will not be accepted.

P. All materials, equipment, components and accessories shall be delivered to the site in a new condition, properly packed and protected against damage or contamination or distortion, breakage or structural weakening due to handling, adverse weather or other circumstances and, as far as practicable, they shall be kept in the packing cases or under approved protective coverings until required for use.

Q. Any items suffering from damage during manufacture, or in transit, or on site whilst in storage or during erection shall be rejected and replaced without extra cost.

R. All sanitary fittings and pipework shall be cleaned after installation and keep them in a new condition.

S. All installed pipelines shall be flushed through with water, rodded when necessary to ensure clearance of debris.

T. Cleaning and flushing shall be carried out in sections as the installation becomes completed.

U. The Contractor shall carry out hydraulic test on the complete plumbing systems and the drainage system to show that it is functioning satisfactorily within the requirements of this Specification and local regulations.

V. The Contractor shall provide suitable test pumps and arrange for a supply of water required in connection with testing of pipework. The test pump shall be fitted with pressure gauges which shall be of suitable range for the pressure being applied.

W. Hydraulic tests shall be carried out as the pipework is installed and shall be completed before chases in walls and ducts are closed. Also test shall be carried out prior to false ceilings and other finishes are installed.

X. Testing apparatus shall be provided by the Contractor. Where any section of pipework or equipment is unable to withstand the maximum pipework test pressure, it shall be isolated during the pipework test then that section of pipework or equipment shall be re-tested at the appropriate test pressure.

Y. The Sanitary Contractor must carry out any additional tests required by the end-user and/or approving agency.

Z. Drainage pipe shall be tested by filling the pipe with 3m of water higher than the test section and wait for 15 min, then check for leakage at every joints.

AA. Testing of drainage systems shall be carried out in sections by dividing the system horizontally. Each section shall comprise pipework and fitting for three floors/storeys required for testing.

AB. Drainage pressure pipe shall be hydraulic tested at minimum pressure 50 psi.

AC. Hangers and supports for plumbing piping and equipment shall withstand the effects of gravity loads and stresses within limits and under conditions indicated according to ASCE/SEI 7.

Y. Install hangers and supports to allow controlled thermal and seismic movement of piping systems, to permit freedom of movement between pipe anchors, and to facilitate action of expansion joints, expansion loops, expansion bends and similar units.

Z. Install lateral bracing with pipe hangers and supports to prevent swaying.

AA. Install building attachments within concrete slabs or attach to structural steel. Install additional attachments at concentrated loads, including valves, flanges, and strainers, NPS 2-1/2 (DN 65) and larger and at changes in direction of piping. Install concrete inserts before concrete is placed; fasten inserts to forms and install reinforcing bars through openings at top of inserts.

BB. Install hangers and supports so that piping live and dead loads and stresses from movement will not be transmitted to connected equipment.

CC. Install hangers and supports to provide indicated pipe slopes and to not exceed maximum pipe deflections allowed by ASME B31.9 for building services piping.

EW. ELECTRICAL WORKS

A.CONDUITS, BOXES AND FITTINGS

1.This item shall consist of the furnishing and installation of the complete conduit work, consisting of electrical conduits, conduit boxes such as junction boxes, pull boxes, utility boxes, octagonal and square boxes; conduit fittings, such as couplings, locknuts and bushings and other electrical materials needed to complete the conduit roughing-in work of this project.

2 All materials shall be brand new and shall be of the approved type meeting all the requirements of the Philippine Electrical Code and bearing the Philippine Standard Agency (PSA) mark.

3.All works throughout shall be executed in the best practice in a workmanlike manner by qualified and experienced electricians under the immediate supervision of a duly licensed Electrical Engineer.

4 The work to be done under this division of specifications consists of the fabrication, furnishing, delivery and installation, complete in all details of the electrical work, at the subject premises and all work materials incidental to the proper completion of the installation, except those portions of the work which are expressly stated to be done by other fields. All works shall be done in accordance with the rules and regulations and with the specifications.

5.All lighting fixtures and lamps are as specified and listed on lighting fixture schedule.

6 All grounding system installation shall be executed in accordance with the approved plans. Grounding system shall include building perimeter ground wires, ground rods, clamps, connectors, ground wells and ground wire tabs as shown in the approved design.

7.All auxiliary systems such as telephone and intercom system, time clock system, fire alarm system and public address/nurse's call/paging system installations shall be done in accordance with the approved design.

8 Upon completion of the electrical construction work, the contractor shall provide all test equipment and personnel and to submit written copies of all test results.

9.The contractor shall guarantee the electrical installation are done and in accordance with the approved plans and specifications. The contractor shall guarantee that the electrical systems are free from all grounds and from all defective workmanship and materials and will remain so for a period of one year from date of acceptance of works. Any defect shall be remedied by the Contractor at his own expense.

B.WIRES AND WIRING DEVICES

1.This item shall consist of the furnishing and installation of all wires and wiring devices consisting of electric wires and cables, wall switches, convenience receptacles, heavy duty receptacles and other devices shown on the approved Plans but not mentioned in these specifications.

2. Wires and cables shall be of the approved type meeting all the requirements of the Philippine Electrical Code and bearing the Philippine Standard Agency (PSA) mark. Unless specified or indicated otherwise, all power and lighting conductors shall be insulated for 600 volts. All wires shall be copper, soft drawn and annealed, smooth and of cylindrical form and shall be centrally located inside the insulation.

3. Conductors or wires shall not be drawn in conduits until after the cement plaster is dry and the conduits are thoroughly cleaned and free from dirt and moisture. In drawing wires into conduits, sufficient slack shall be allowed to permit easy connections for fixtures, switches, receptacles and other wiring devices without the use of additional splices.

4. All conductors of convenience outlets and lighting branch circuit homeruns shall be wired with a minimum of 3.5 mm in size. Circuit homeruns to panelboards shall not be smaller than 3.5 mm but all homeruns to panelboard more than 30 meters shall not be smaller than 5.5 mm. No conductor shall be less than 2 mm in size.

5. All wires of 14mm and larger in size shall be connected to panels and apparatus by means of approved type lugs or connectors of the solderless type, sufficiently large enough to enclose all strands of the conductors and securely fastened. They shall not loosen under vibration or normal strain.

6. All joints, taps and splices on wires larger than 14 mm shall be made of suitable solderless connectors of the approved type and size. They shall be taped with rubber and PVC tapes providing insulation not less than that of the conductors.

7. No splices or joints shall be permitted in either feeder or branch conductors except within outlet boxes or accessible junction boxes or pull boxes. All joints in branch circuit wiring shall be made mechanically and electrically secured by approved splicing devices and taped with rubber and PVC tapes in a manner which will make their insulation as that of the conductor.

8. All wall switches and receptacles shall be fitted with standard Bakelite face plate covers. Device plates for flush mounting shall be installed with all four edges in continuous contact with finished wall surfaces without the use of coiled wire or similar devices. Plaster filling shall not be permitted. Plates installed in wet locations shall be paked.

9. When more than one switch or device is indicated in a single location, gang plate shall be used.

I. PANELBOARDS

1. Fabricate and test panelboards according to IEEE 344 to withstand seismic forces defined in Division 16 Sections 16073 and 16074 "Hangers and Supports for Electrical Systems and Vibration and Seismic controls for Electrical Systems" respectively.

2. Enclosures: Flush, Surface, Flush- and surface-mounted cabinets

a. Rated for environmental conditions at installed location.

i. Indoor Dry and Clean Locations: NEMA, Type 1.

ii. Outdoor Locations: NEMA, Type 3R

iii. Kitchen and Wash-Down Areas: NEMA, Type 4X, stainless steel.

iv. Indoor Locations Subject to Dust, Falling Dirt, and Dripping Noncorrosive Liquids: NEMA, Type 12.

v. Outdoor Locations Subject to Dust, Falling Dirt, and Dripping Noncorrosive Liquids: NEMA, Type 3R

b. Front: Secured to box with concealed trim clamps. For surface-mounted fronts, match box dimensions; for flush-mounted fronts, overlap box.

c. Hinged Front Cover: Entire front trim hinged to box and with standard door within hinged trim cover.

d. Skirt for Surface-Mounted Panelboards: Same gauge and finish as panelboard front with flanges for attachment to panelboard, wall, and ceiling or floor.

e. Gutter Extension and Barrier: Same gage and finish as panelboard enclosure; integral with enclosure body. Arrange to isolate individual panel sections.

f. Finishes:

i. Panels and Trim: Steel and galvanized steel, factory finished immediately after cleaning and pretreating with manufacturer's standard two-coat, baked-on finish consisting of prime coat and thermosetting topcoat.

ii. Back Boxes: Galvanized steel Same finish as panels and trim.

iii. Fungus Proofing: Permanent fungicidal treatment for overcurrent protective devices and other components.

g. Directory Card: Inside panelboard door, mounted in transparent card holder metal frame with transparent protective cover.

3 Incoming Mains Location: Top or Bottom

4 Phase, Neutral, and Ground Buses:

a. Material: Hard-drawn copper, 98 percent conductivity.

b. Equipment Ground Bus: Adequate for feeder and branch-circuit equipment grounding conductors, bonded to box.

c. Neutral Bus: 100 percent of phase bus 4. Extra-Capacity Neutral Bus: Neutral bus rated 200 percent of phase bus and LFL listed as suitable for nonlinear loads.

Prepared by:

ALVIN FRANCIS C. ABON
Planning and Programming Division

Checked by:

JOCELYN A. NAONG
Planning and Programming Division

Section VII. Drawings

[Insert here a list of Drawings. The actual Drawings, including site plans, should be attached to this section, or annexed in a separate folder.]

THE SITE



1 VICINITY MAP

SCALE NTS.

THE SITE



2 LOCATION MAP

SCALE NTS.

3 SITE DEVELOPMENT PLAN

SCALE NTS.



Republika ng Pilipinas
Lungsod ng Quezon
CITY ENGINEERING DEPARTMENT

PROJECT TITLE:

PROPOSED REHABILITATION OF
HERBERT BAUTISTA
MULTI-PURPOSE BUILDING AT
BARANGAY GREATER LUGO

LOCATION:

GREATER LUGO, DISTRICT 4, QUEZON CITY

DRAWN BY:

DATE: 10/27/22

CHECKED BY:

REVISIONS:

SUBMITTED BY:

ENGR. LEO S. DEL ROSARIO
HEAD, PLUMBING PROGRAMMING DIVISION

RECOMMENDED APPROVAL:

ENGR. ISMAEL R. VERZOSA, JR.
DCC CITY ENGINEERING DIVISION

APPROVED BY:

HON. MA. JOSEFINA G. BELMONTE
CITY MAYOR

SHEET CONTENT:

VICINITY MAP
LOCATION MAP
SITE DEVELOPMENT PLAN

SHEET NO.:

AR-01
01/16

TABLE OF CONTENTS

ARCHITECTURAL

AR-1	VICINITY MAP
	LOCATION PLAN
	SITE DEVELOPMENT PLAN
AR-2	GROUND FLOOR PLAN
AR-3	SECOND FLOOR PLAN
AR-4	THIRD FLOOR PLAN
	SCHEDULE OF DOORS
AR-5	ROOF DECK PLAN
	ACCESS LADDER DETAILS

PLUMBING

PL-1	GENERAL NOTES
	LEGENDS AND SYMBOLS
	GROUND FLOOR SANITARY LAYOUT
PL-2	BEDDING FLOOR SANITARY LAYOUT
	THIRD FLOOR SANITARY LAYOUT
PL-3	ROOF DECK SANITARY LAYOUT
	STORM DRAIN LAYOUT

ELECTRICAL

EL-1	GENERAL NOTES
	LEGENDS AND SYMBOLS
	MISCELLANEOUS DETAILS
EL-2	SCHEDULE OF LOADS
EL-3	SCHEDULE OF LOADS
EL-4	LAND DEVELOPMENT FEEDER LAYOUT
EL-5	GROUND FLOOR LIGHTING LAYOUT
	SECOND FLOOR LIGHTING LAYOUT
EL-6	THIRD FLOOR LIGHTING LAYOUT
	ROOF DECK LIGHTING LAYOUT
EL-7	GROUND FLOOR POWER LAYOUT
	SECOND FLOOR POWER LAYOUT
EL-8	THIRD FLOOR POWER LAYOUT
	ROOF DECK POWER LAYOUT



1. CEILING TO BE REPLACED

SCALE 1:100M.




PROJECT TITLE

**PROPOSED REHABILITATION OF
HERBERT BAUTISTA
MULTI-PURPOSE BUILDING AT
BARANGAY GREATER LAGRO**

DATE: 08/27/22
TIME: 08:00

[illegible]

RECOMMENDED APPROVAL:



ADDRESS ONLY	

SHEET CONTENT
SECOND FLOOR PLAN AND DOOR SCHEDULE

AR-03



NOTE:

1. CEILING TO BE REPLACED

1 THIRD FLOOR PLAN

SCALE 1:100M



Republika ng Pilipinas
Lungsod ng Quezon
CITY ENGINEERING DEPARTMENT

PROJECT TITLE: PROPOSED REHABILITATION OF HERBERT BAUTISTA MULTI-PURPOSE BUILDING AT BARANGAY GREATER LAGRO	DRAWN BY: DATE: 06-27-22 CHECKED BY: REVISION NO:	SUBMITTED BY: ENGR. LEO S. DEL ROSARIO HEAD, PLANNING & PROGRAMMING DIVISION	RECOMMENDING APPROVAL: ENGR. ISAAC R. VERZOSA, JR. CITY ENGINEERING DEPARTMENT	APPROVED BY: HON. NA. JOSEFINA G. DEL MONTE CITY MAYOR	SHEET CONTENT: THIRD FLOOR PLAN	SHEET NO: AR-04 04/16
---	--	--	--	--	------------------------------------	---



NOTES

1. CEILING TO BE REPLACED
2. WATERPROOFING TO BE APPLIED
3. ROOF TO BE REPLACED

1 ROOF DECK PLAN AND ACCESS LADDER DETAILS

SCALE 1:100M



Republika ng Pilipinas
Lungsod ng Quezon
CITY ENGINEERING DEPARTMENT

PROJECT TITLE: **PROPOSED REHABILITATION OF
HERBERT BAUTISTA
MULTI-PURPOSE BUILDING AT
BARANGAY GREATER LAGRO**

8907 BREATHEN LAGO DISTRICT, GILSON CITY

DRAWN BY: CMC

DATE: 10.27.20

[Google](#)

PLN/Verband

DE GRUYTER

17

+

ROAD PLANS

1

150

© 2004 Blackwell Publishing Ltd
Journal of Internal Medicine 255: 103–110

© 2003 Blackwell Publishing Ltd *Journal of Internal Medicine* 253: 103–110

[illegible]

14

INC. CITY SOURCE/FRM

4. 2000

[illegible]

100

NONAL
Nonaluminum

10/10/2008

ACAP DECK PLAN

100

100

[illegible]

1	2	3	4	5	6	7	8	9	10	11	12	13	14	15	16	17	18	19	20	21	22	23	24	25	26	27	28	29	30	31	32	33	34	35	36	37	38	39	40	41	42	43	44	45	46	47	48	49	50	51	52	53	54	55	56	57	58	59	60	61	62	63	64	65	66	67	68	69	70	71	72	73	74	75	76	77	78	79	80	81	82	83	84	85	86	87	88	89	90	91	92	93	94	95	96	97	98	99	100
---	---	---	---	---	---	---	---	---	----	----	----	----	----	----	----	----	----	----	----	----	----	----	----	----	----	----	----	----	----	----	----	----	----	----	----	----	----	----	----	----	----	----	----	----	----	----	----	----	----	----	----	----	----	----	----	----	----	----	----	----	----	----	----	----	----	----	----	----	----	----	----	----	----	----	----	----	----	----	----	----	----	----	----	----	----	----	----	----	----	----	----	----	----	----	----	----	----	----	-----

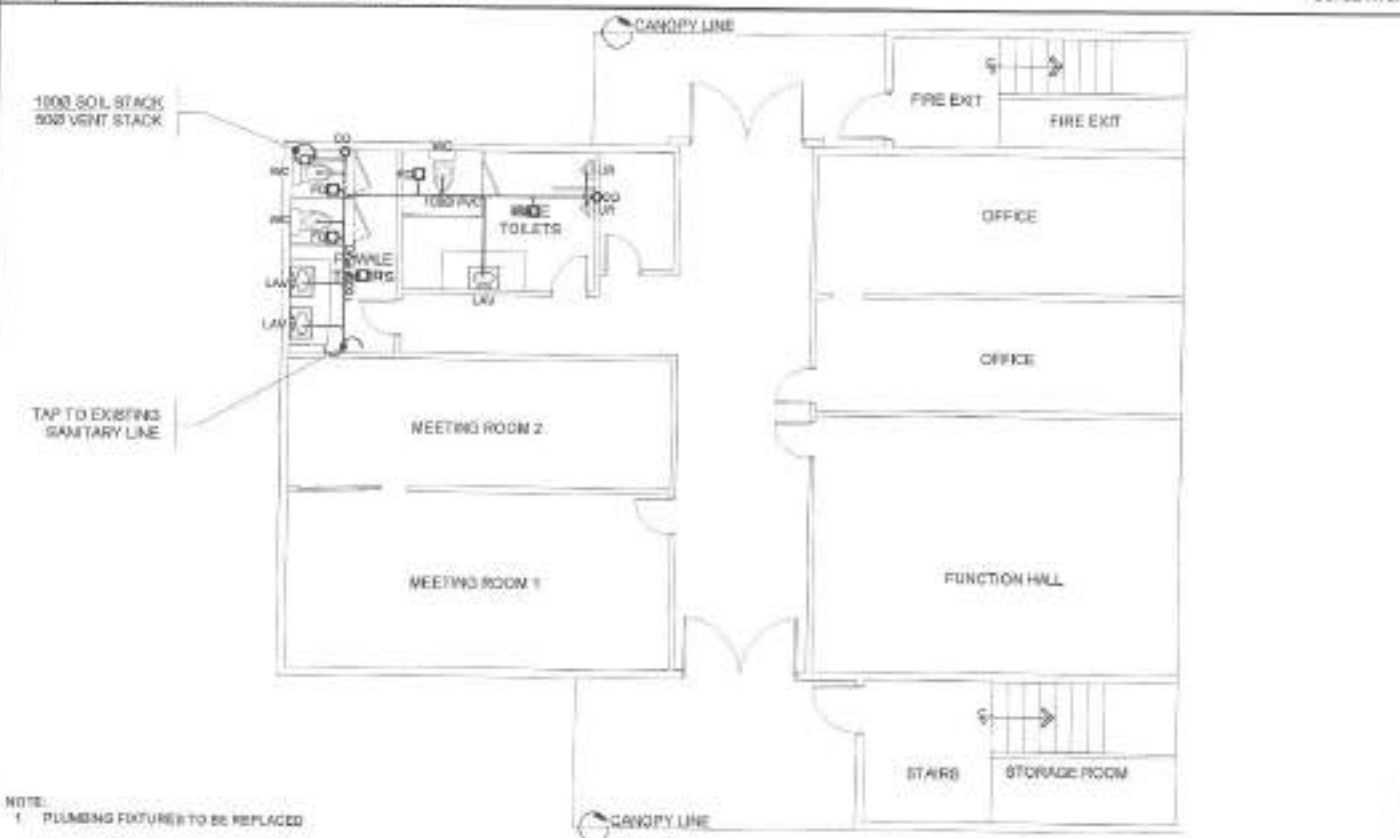
(AR-05)

05 16

1. ALL WORKS SHALL BE EXECUTED IN ACCORDANCE TO THE UNIFORM PLUMBING CODE OF THE PHILIPPINES, THE NATIONAL BUILDING CODE OF THE PHILIPPINES AND OTHER RELATED LAWS AND ORDINANCES OF THE CITY.
2. ALL WORKS SHALL BE SUPERVISED BY A REGISTERED PROFESSIONAL RELATED TO THE ACTIVITIES BEING UNDERTAKEN.
3. ALL WORKS SHALL BE COORDINATED WITH THE RESPECTIVE TRADERS SO TO AVOID CONFLICTS DURING EXECUTION OF ACTIVITIES.
4. ALL NECESSARY PERMITS SHALL BE SECURED AND TURNED OVER TO THE CITY.
5. ALL DRAWINGS AND SPECIFICATIONS SHALL BE CORRECTLY REVIEWED BY THE CONTRACTOR AND SHALL IMMEDIATELY BE INFORMED IF DISCREPANCY (IES) FOUND HEREON.
6. ALL DIMENSIONS, ELEVATIONS AND REFERENCES SHALL BE VERIFIED WITH THE ACTUAL CONDITION PRIOR TO EXECUTION.
7. SHOP DRAWINGS SHALL BE PROVIDED AS NECESSARY PRIOR TO THE EXECUTION.
8. ALL WORKS SHALL BE TESTED AND COMMISSIONED AS INDICATED IN THE SPECIFICATION WITH THE PRESENCE OF ALL PARTIES INVOLVED. RESULT SHALL BE DOCUMENTED PROPERLY.
9. ALL PIPES AND LAY-OUT ARE ONLY DIAGNOSTIC. ACTUAL LAYOUT OF PIPES AND FITTINGS, UNLESS OTHERWISE REQUIRED, SHALL BE PROPERLY CONCEALED.
10. NO PIPES SHALL BE ALLOWED TO BE ENGAGED IN STRUCTURAL MEMBERS, UNLESS OTHERWISE APPROVED.
11. ALL PIPES, FITTINGS, EQUIPMENT AND FIXTURES SHALL PASS THE MINIMUM STANDARDS AS PER MATERIAL SPECIFICATION WITH THE SEAL OF APPROVAL BY THE DEPARTMENT OF TRADE AND INDUSTRY.
12. ALL PIPES, FITTINGS, EQUIPMENT AND FIXTURES SHALL BE INSTALLED IN ACCORDANCE TO MANUFACTURER'S SPECIFICATION AND INSTRUCTION.
13. SUPPORT AND HANGERS SHALL BE PROVIDED ACCORDINGLY.
14. ALL EQUIPMENT & FIXTURES SHALL BE ENVIRONMENTAL FRIENDLY (SUCH AS WATER EFFICIENT FIXTURES).
15. WATER LINE
 - 15.1. WATER LINE SHALL BE PPR TYPE.
 - 15.2. GATE VALVE SHALL BE PPR TYPE OR APPROVED EQUIVALENT.
 - 15.3. WATER METER SHALL BE ANY BRAND AND ACCEPTED BY THE WATER UTILITY COMPANY.
 - 15.4. ALL WATER PIPES EXPOSED TO WEATHER CONDITIONS SHALL BE MADE OF G.I.
16. STORM DRAIN
 - 16.1. ALL STORM DRAINAGE SLOPE SHALL BE WITHIN 0.5% TO 4%.
 - 16.2. STORM DRAINAGE LINE 200MM AND BELOW SHALL BE PVC, 300MM & ABOVE SHALL BE REINFORCED CONCRETE PIPE.
17. SEWER LINE
 - 17.1. ALL SLOPE FOR SANITARY SHALL CONFORM 1/2% SLOPE.
 - 17.2. SOIL, WASTE, & VENT PIPE SHALL BE (POLYVINYL CHLORIDE) PVC OR THE APPROVED EQUAL.
 - 17.3. CLEAN OUTS MUST BE PROVIDED FOR SANITARY VERTICAL PIPES AND EACH HORIZONTAL PIPE SHALL BE PROVIDED WITH A CLEAN OUT AT ITS UPPER TERMINAL, EVERY CHANGE IN DIRECTION AND EVERY 30M OF A STRAIGHT PIPE. CLEAN OUTS CAN BE OMITTED IF THE EFFECTIVE LENGTH IS LESS THAN 10M.
 - 17.4. ALL DRAINAGE FIXTURE SHALL BE SUPPLIED WITH APPROPRIATE VENTILATION.
18. FIXTURES
 - 18.1. WATER CLOSETS SHALL BE FREE STANDING TOILET COMMATION, ROUND FRONT BOTTOM OUTLET 5 PCHM VORTER OR WASH-DOWN BOWL WITH EXTENDED REAR SIFL AND CLOSURE COUPLED TANK WITH COVER COMPLETE WITH FITTING AND MOUNTING ACCESSORIES AND WATER EFFICIENT.
 - 18.2. LAVATORY SHALL BE VITREOUS CHINA, WALL HUNG WITH REAR OVERFLOW, POCKET HANGER WITH INTEGRAL CHINA BRACKET, COMPLETE WITH STAINLESS STEEL LEVER TYPE HEAVY DUTY FAUCET, SUPPLY PIPES, P-TRAP AND MOUNTING ACCESSORIES.
 - 18.3. URINAL SHALL BE VITREOUS CHINA, WALL HUNG WASH-OUT URINAL WITH EXTENDED SIFL AND INTEGRAL FLUSH SPREADER, CONCEALED WALL HANGER POCKETS, 18MM TOP BRID COMPLETE FITTING AND MOUNTING ACCESSORIES, INCLUDING URINAL PARTITION.
 - 18.4. GRAB BARS SHALL BE PROVIDED ON ALL PWD TOILET AND SHALL BE MADE OF TUBULAR STAINLESS STEEL PIPE PROVIDED WITH SAFETY GRIP AND MOUNTING FLANGE.
 - 18.5. FLOOR DRAIN SHALL BE MADE OF STAINLESS STEEL TYPE, MEASURING 100MM X 100MM AND PROVIDED WITH DETACHABLE STAINLESS STRAINER, COUPLED METAL LATH TYPE.
 - 18.6. TOILET PAPER HOLDER SHALL BE VITREOUS CHINA WALL MOUNTED. COLOR SHALL RESEMBLE WITH THE ADJACENT FIXTURE AND FINISH TRIM.
 - 18.7. SOAP HOLDER SHALL BE VITREOUS CHINA WALL MOUNTED. COLOR SHALL RESEMBLE WITH THE ADJACENT FIXTURE AND FINISH TRIM.
 - 18.8. FAUCET SHALL BE MADE OF STAINLESS STEEL LEVER TYPE HEAVY DUTY FOR INTERIOR USE.
 - 18.9. ROSE BATH SHALL BE MADE OF STAINLESS STEEL LEVER TYPE HEAVY DUTY.
 - 18.10. KITCHEN SINK FAUCET SHALL BE MADE OF STAINLESS STEEL LEVER TYPE HEAVY DUTY GOOSE NECK TYPE WITH COMPLETE ACCESSORIES.

2 LEGENDS AND SYMBOLS

SCALE NTS.



1 GENERAL NOTES

SCALE NTS.

3 GROUND FLOOR SANITARY LAYOUT

SCALE 1:100M



Republika ng Pilipinas
Lungsod ng Davao
CITY ENGINEERING DEPARTMENT

PROJECT TITLE:
**PROPOSED REHABILITATION OF
HERBERT BAUTISTA
MULTI-PURPOSE BUILDING AT
BARANGAY GREATER LAGRO**

LOCATION:
BRGY. GREATER LAGRO, DISTRICT 1, DAVAO CITY

DRAWN BY:
DATE: 05/21/22
CHECKED BY:
REVIEWED BY:

SUBMITTED BY:

ENGR. LEO S. DEL ROSARIO
HEAD, PLUMBING & MECHANICAL DIVISION

RECOMMENDING APPROVAL:

ENGR. ISAGANI R. VERZOSA, JR.
DEPUTY CHIEF ENGINEER

APPROVED BY:

HON. MA. JOSEFINA G. BELMONTE
CITY MAYOR

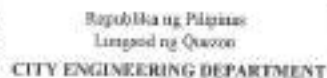
SHEET CONTENT
SEWAGE, WATER
LAVATORY AND URINALS
GROUND FLOOR
SANITARY LAYOUT

SHEET NO.

PL-01
06/16

1. PULPING FIXTURES TO BE REPLACED:

SCALE 1:100MM



LOCATION: BEOY, GREATER LAKES DISTRICT 8, QUEBEC CITY

THE SOUTHERN PACIFIC

ENGR. LEO S. DEL ROSARIO
HEAD, PLANNING & PROGRAMMING DIVISION

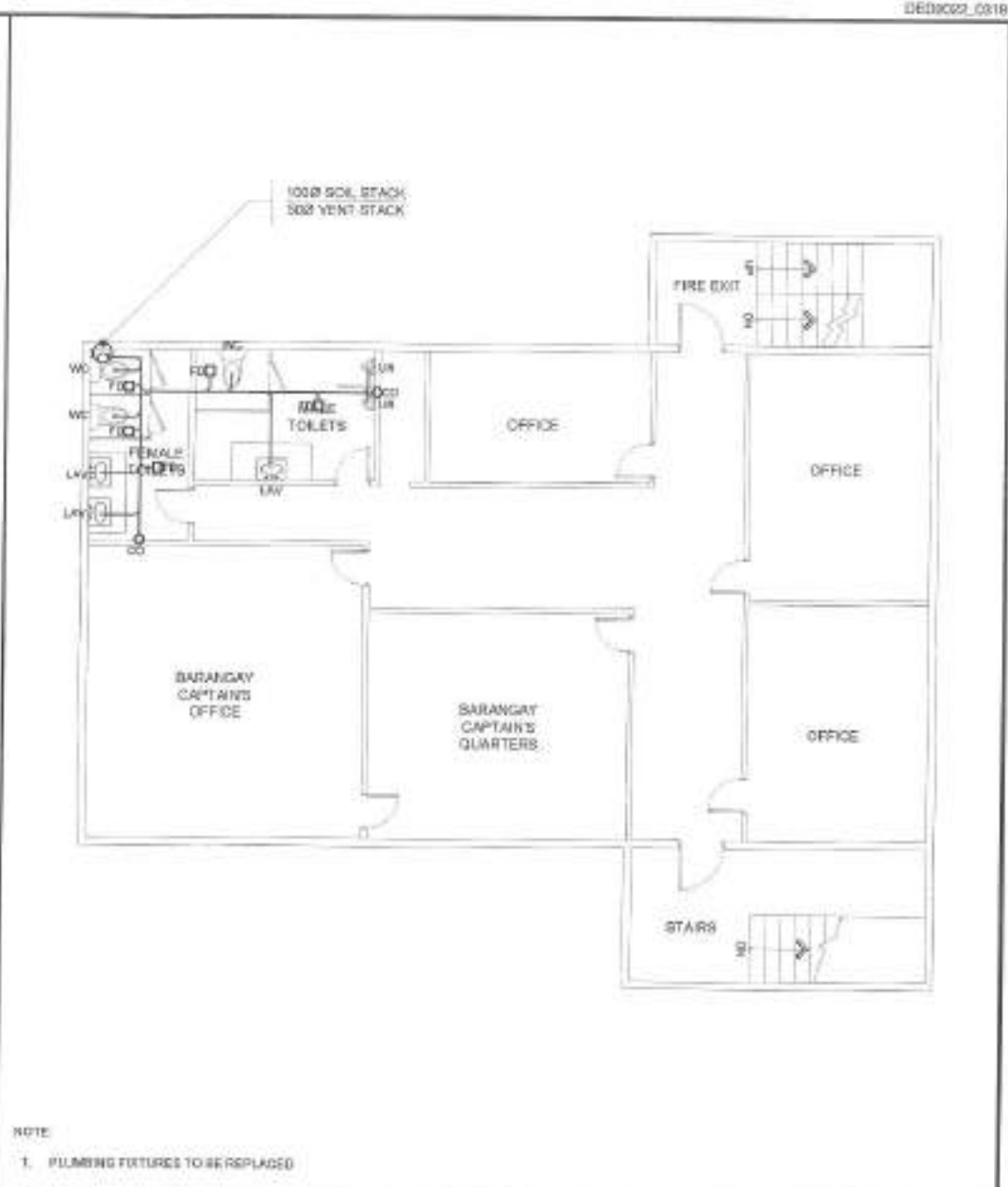
ENGR. ISMAEL R. VERZOSA, JR.
CIVIL ENGINEERING DEPARTMENT

HON. MA, JOSEFINA G. BELMONTE
CITY OF NEW YORK

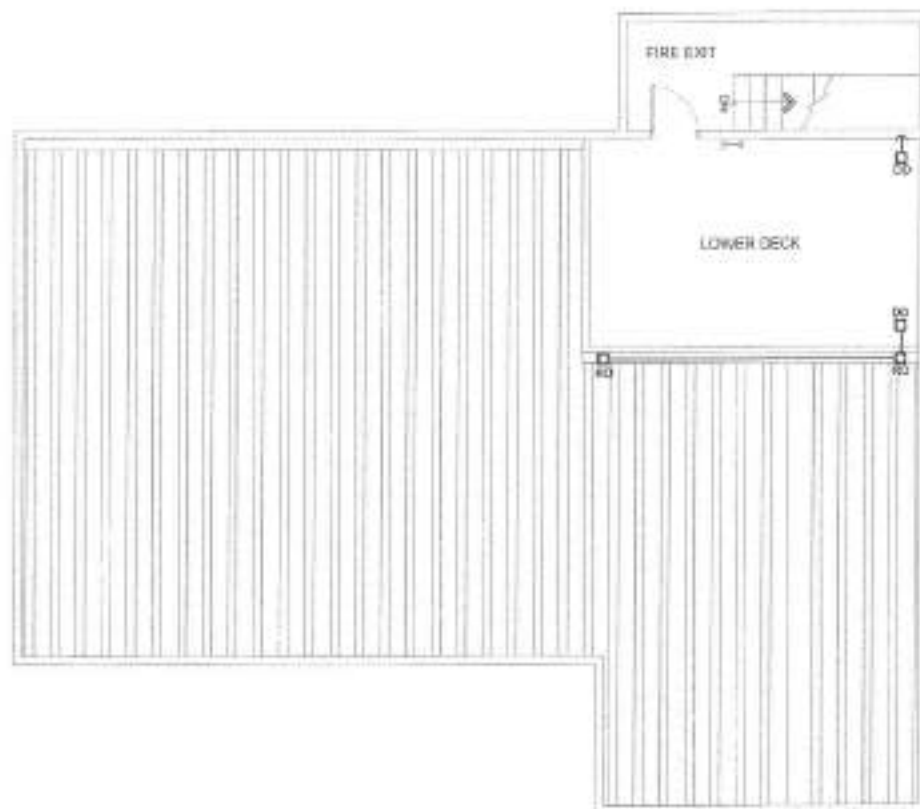
1

07/16

SCALE 1:100M

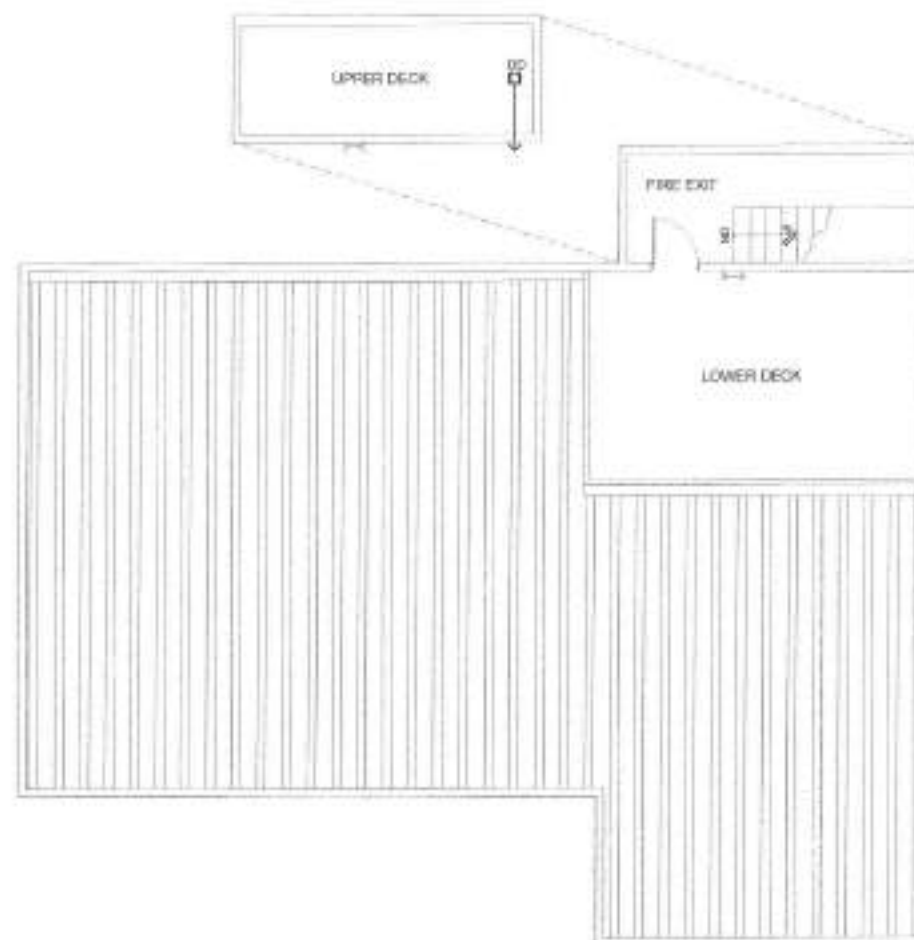


1. PUMPING FUTURES TO BE REPLACED



NOTE:

1. REPLACEMENT OF GUTTER
INCLUDING DOWNSPOUT



1 STORM DRAIN LAYOUT

SCALE 1:100M

2 UPPER DECK PLAN

SCALE 1:100M



Republika ng Pilipinas
Lungsod ng Quezon
CITY ENGINEERING DEPARTMENT

PROJECT TITLE:
**PROPOSED REHABILITATION OF
HERBERT BAUTISTA
MULTI-PURPOSE BUILDING AT
BARANGAY GREATER LAGRO**

LOCATION:
BRST, GREATER LAGRO, DISTRICT 5, QUEZON CITY

DRAWN BY: *[Signature]*

DATE: 08-27-22

CHECKED BY: *[Signature]*

REVIEWED:

SUBMITTED BY:

[Signature]
ENGR. LEO S. DEL ROSARIO
HEAD, PLANNING & RECORDS DIVISION

RECOMMENDING APPROVAL:

[Signature]
ENGR. SARINI R. VERZOSA, JR.
DEC, CITY ENGINEERING DEPARTMENT

APPROVED BY:

[Signature]
HON. RA. JOSEFINA G. BELMONTTE
CITY MAYOR

SHEET CONTENT:

UPPER DECK PLAN
STORM DRAIN LAYOUT

SHEET NO.:

PL-03
08/16

GENERAL NOTES FOR THREE-PHASE SYSTEM

1. ALL WORKS SHALL BE EXECUTED IN ACCORDANCE TO THE LATEST EDITION OF THE PHILIPPINE ELECTRICAL CODE, PHILIPPINE ELECTRONICS CODE, THE NATIONAL BUILDING CODE OF THE PHILIPPINES AND OTHER RELATED LAWS AND ORDINANCES OF THIS CITY.
2. ALL WORKS SHALL BE SUPERVISED BY A REGISTERED PROFESSIONAL RELATED TO THE ACTIVITIES BEING UNDERTAKEN.
3. ALL WORKS SHALL BE COORDINATED WITH THE RESPECTIVE TRADES SO TO AVOID CONFLICTS DURING EXECUTION OF ACTIVITIES.
4. ALL NECESSARY PERMITS SHALL BE SECURED AND TURNED-OVER TO THE CITY.
5. ALL DRAWINGS AND SPECIFICATIONS SHALL BE CORRECTLY REVIEWED BY THE CONTRACTOR AND SHALL IMMEDIATELY BE INFORMED IF DISCREPANCY (IES) FOUND HEREIN.
6. ALL DIMENSIONS, ELEVATIONS AND REFERENCES SHALL BE VERIFIED WITH THE ACTUAL CONDITION PRIOR TO EXECUTION.
7. SHOP DRAWINGS SHALL BE PROVIDED AS NECESSARY PRIOR TO THE EXECUTION.
8. ALL WORKS SHALL BE TESTED AND COMMISSIONED AS INDICATED IN THE SPECIFICATIONS WITH THE PRESENCE OF ALL PARTIES INVOLVED. RESULTS SHALL BE DOCUMENTED PROPERLY.
9. ALL PIPES AND LAYOUT ARE ONLY DIAGNAMATIC. ACTUAL LAYOUT OF PIPES AND FITTINGS, UNLESS OTHERWISE REQUIRED, SHALL BE PROPERLY CONCEALED.
10. NO PIPES SHALL BE ALLOWED TO BE EMBEDDED IN STRUCTURAL MEMBERS, UNLESS OTHERWISE APPROVED.
11. ALL PIPES, FITTINGS, EQUIPMENT AND FIXTURES SHALL BE INSTALLED IN ACCORDANCE TO MANUFACTURER'S SPECIFICATIONS AND INSTRUCTIONS.
12. SUPPORTS AND HANGERS SHALL BE PROVIDED ACCORDINGLY.
13. ALL EQUIPMENTS AND FIXTURES SHALL BE ENVIRONMENTAL FRIENDLY.
14. INSTALLATION OF SERVICE ENTRANCE
 - 14.1. THE TYPE OF SERVICE ENTRANCE SHALL BE THREE-PHASE, THREE-WIRE PLUS GROUND, 60 HERTZ, 230V AC NOMINAL.
 - 14.2. THE SERVICE ENTRANCE EQUIPMENT SHALL BE PROPERLY GROUNDED IN ACCORDANCE WITH THE PHILIPPINE ELECTRICAL CODE.
 - 14.3. THE MAIN OVERCURRENT PROTECTION DEVICE SHALL BE OF THERMAL MAGNETIC MOOD IN NEMA 3R WEATHERPROOF ENCLOSURE.
15. INSTALLATION OF LIGHTING AND POWER SYSTEM
 - 15.1. ALL LIGHTING AND CONVENIENCE OUTLET CIRCUITS SHALL BE 3.5 SQ. MM THINWALL COPPER WIRE UNLESS OTHERWISE NOTED. MINIMUM SIZE OF WIRE SHALL BE 3.5 SQ. MM. COPPER WIRE. ALL WIRES AND CABLES SHALL BE COLOR CODED AS FOLLOWS:
PHASE A - RED
PHASE B - YELLOW
PHASE C - BLUE
NEUTRAL - WHITE
GROUND - GREEN

15.2. ALL EMBEDDED BRANCH CIRCUITS SHALL BE PVC CONDUITS AND FOR EXPOSED INSTALLATION SHALL BE IMC SUPPORTED BY CONDUIT CLAMPS EVERY 700 MILLIMETERS AND/OR CONDUIT HANGER SUPPORTS EVERY 1500 MILLIMETERS.

15.3. CONDUITS IN NO CASE SHALL NOT BE MORE THAN THE EQUIVALENT OF FOUR QUARTER BENDS IN ANY ONE RUN. ALL CONDUIT BENDS SHALL BE FIELD MADE BY USING HYDRAULIC BENDERS. MINIMUM BENDING RADIUS MUST BE IN ACCORDANCE TO THE CODE REQUIREMENTS.

15.4. ALL POWER OUTLETS AND SWITCHES SHALL BE GROUNDING TYPE WITH PARALLEL SLOTS FOR 250 V.

15.5. PROVIDE GROUND FAULT CURRENT INTERRUPTER CIRCUIT BREAKER FOR LOADS MARKED "GFCI" ON THE PLAN.

15.6. ALL METALLIC CONDUITS, SWITCHES, LIGHTING FIXTURES, PANELBOARDS, EQUIPMENTS AND NON-CURRENT CARRYING METAL PARTS SHALL BE PROPERLY GROUNDED AND BONDED.

15.7. THE GROUND RESISTANCE SHALL NOT BE MORE THAN 5 OHMS.

15.8. ALL MOUNTING HEIGHTS FOR WALL MOUNTED DEVICES SHALL BE AS FOLLOWS:

- A. LIGHTING SWITCH - 1400 MM ABOVE FLOOR FINISH
- B. CONVENIENCE OUTLET - 300 MM ABOVE FLOOR FINISH
- C. PANELBOARD AND CABINETS - 150MM ABOVE WORKING COUNTER
- D. EMERGENCY LIGHT - 1400 MM ABOVE FLOOR FINISH
- E. EXIT LIGHT - 150 MM TOP OF DOOR JAMB
- F. EMERGENCY LIGHT - 2000 ABOVE FLOOR/EMERGENCY

15.9. PULL BOXES SHALL BE WHOMEVER NECESSARY TO FACILITATE WIRE PULLING EVEN IF THESE ARE NOT INDICATED ON PLANS.

15.10. FOR EACH SPARE BRANCH CIRCUIT IN PANELBOARD, PROVIDE ONE 20MM DIAMETER EMPTY CONDUIT TERMINATED TO 100MM OCTAGONAL BOX ABOVE CEILING. MINIMUM SIZE OF PULL BOX SHALL BE 150MM X 150MM X 100MM.

15.11. ALL CIRCUIT BREAKERS SHALL BE BOLT-ON TYPE WITH INTERRUPTING CAPACITY AS INDICATED IN THE PLANS. PANELBOARDS SHALL BE GALVANIZED SHEET POWDER COATED GAGE 18 MINIMUM.

15.12. FEEDER AND BRANCH CIRCUIT CONDUCTORS IN CABLE TRAYS SHALL BE GROUPED, BONDED AND TAGGED TO INDICATE CLEARLY THE ELECTRICAL CHARACTERISTICS SUCH AS CIRCUIT NUMBER AND PANEL DESIGNATION.

15.13. REFER TO MECHANICAL, PLUMBING AND FIRE PROTECTION DRAWINGS FOR RATINGS AND LOCATIONS OF EQUIPMENT AS WELL AS THEIR CONTROL SEQUENCES AS SPECIFIED AND OR SHOWN UNDER THEIR RESPECTIVE SECTIONS.

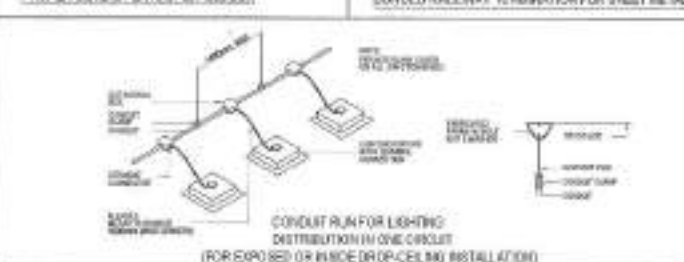
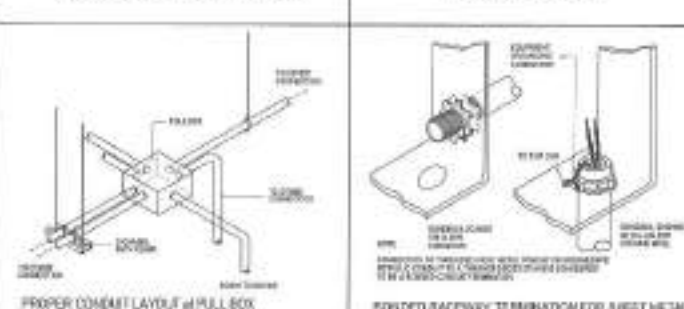
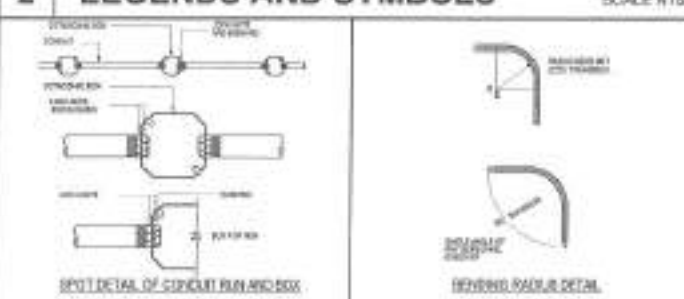
15.14. ALL MATERIALS TO BE USED AND THE EQUIPMENT TO BE INSTALLED SHALL BE OF THE BEST QUALITY, BRAND NEW AS SPECIFIED. IT MUST BE APPROVED TYPE FOR THE PARTICULAR LOCATION AND PURPOSE INTENDED.

LEGENDS AND SYMBOLS

REF	WIRE (WIRE/TYPE)	SW	Switch - Two Gang
ENCLOSURE	ENCLOSURE (CIRCUIT BREAKER)	SWB	Switch - Three Gang
CONDUIT	100mm x 100mm Tubular 1.1 MW/LED Tube Light	SWTH	Switch - Three Pole
CONDUIT	100mm x 100mm Tubular 1.1 MW/LED Tube Light	SWTH	Switch - Three Pole
CONDUIT	100mm x 100mm Tubular 1.1 MW/LED Tube Light	SWTH	Switch - Three Pole
CONDUIT	100mm x 100mm Tubular 1.1 MW/LED Tube Light	SWTH	Switch - Three Pole
CONDUIT	100mm x 100mm Tubular 1.1 MW/LED Tube Light	SWTH	Switch - Three Pole
CONDUIT	100mm x 100mm Tubular 1.1 MW/LED Tube Light	SWTH	Switch - Three Pole
CONDUIT	100mm x 100mm Tubular 1.1 MW/LED Tube Light	SWTH	Switch - Three Pole
CONDUIT	100mm x 100mm Tubular 1.1 MW/LED Tube Light	SWTH	Switch - Three Pole

2 LEGENDS AND SYMBOLS

SCALE NTS.



1 GENERAL NOTES

SCALE NTS.

3 MISCELLANEOUS DETAILS

SCALE NTS.

	PROJECT TITLE:	PROPOSED REHABILITATION OF HERBERT BAUTISTA MULTI-PURPOSE BUILDING AT BARANGAY GREATER LAGRO	DRAWN BY:	DESIGNED BY:	RECOMMENDING APPROVAL:	APPROVED BY:	SHEET CONTENT:	SHEET NO.:
	DATE:	09/27/23	CHECKED BY:	ENGR. LEO S. DEL ROSARIO	ENGR. ISAGAN R. VERZOSA, JR.	HON. MA. JOSEFINA G. BELMONTE	REVISIONS AND REVISIONS:	EL-01
	LOCATION:	BAR. GREATER LAGRO, DISTRICT 1, QUEZON CITY	REVISION NO.:	ENGR. LEO S. DEL ROSARIO	ENGR. ISAGAN R. VERZOSA, JR.	HON. MA. JOSEFINA G. BELMONTE	REVISIONS AND REVISIONS:	09/16
	CITY ENGINEERING DEPARTMENT							

GROUND FLOOR

MDP - PROPOSED MAIN DISTRIBUTION PANEL

CIR NO.	LOAD DESCRIPTION	VOLTS	VA	AMPERE LOAD				AT	SIZE OF	
				AB	BC	CA	3Ø		WIRES	CONDUITS
1	LPPA	230	16,488	16.0A	11.7A	11.0A		75	3-14.0mm ² THHN COPPER WIRE 1-8.0mm ² TW GROUND WIRE	14.0mm ² PVC RPE
2	LPPB	230	11,648	16.0A	20.0A	13.0A		75	3-14.0mm ² THHN COPPER WIRE 1-8.0mm ² TW GROUND WIRE	14.0mm ² PVC RPE
3	LPPC	230	14,468	22.0A	21.7A	20.0A		75	3-14.0mm ² THHN COPPER WIRE 1-8.0mm ² TW GROUND WIRE	14.0mm ² PVC RPE
4	SPARE	230	—	—	—	—		75	—	—
			36,730	54.0A	53.4A	51.0A				

COMPUTATION:

$$IT = 1.732 \times (54.0A) \times (208V) = 191.5A$$

$$IT = 191.5 \text{ AMPERES}$$

OVER CURRENT PROTECTION

USE: 150AT, 3P, 230V MOLDED CASE CIRCUIT BREAKER IN NEMA 1

MAIN FEEDER:

USE: 3 - 93.8mm² THHN & 1-14.0mm² TW GROUND WIRE IN 32mm² PVC RPE/32mm² BIC RPE

GROUND FLOOR

LPPA - PROPOSED LIGHTING AND POWER PANEL

CIR NO.	LOAD DESCRIPTION	VOLTS	VA	AMPERE LOAD				AT	SIZE OF	
				AB	BC	CA	3Ø		WIRES	CONDUITS
1	3-LIGHT FIXTURES	230	800	1.3A				33	3-3.0mm ² THHN COPPER WIRE 1-3.0mm ² TW GROUND WIRE	14.0mm ² PVC RPE
2	12-LIGHT FIXTURES	230	800	2.9A				33	3-3.0mm ² THHN COPPER WIRE 1-3.0mm ² TW GROUND WIRE	14.0mm ² PVC RPE
3	14-LIGHT FIXTURES	230	750			3.0A		30	3-3.0mm ² THHN COPPER WIRE 1-3.0mm ² TW GROUND WIRE	14.0mm ² PVC RPE
4	9-LIGHT FIXTURES	230	800			1.3A		30	3-3.0mm ² THHN COPPER WIRE 1-3.0mm ² TW GROUND WIRE	14.0mm ² PVC RPE
5	9-LIGHT FIXTURES	230	800		1.3A			30	3-3.0mm ² THHN COPPER WIRE 1-3.0mm ² TW GROUND WIRE	14.0mm ² PVC RPE
6	9-LIGHTING OUTLET	230	430		1.8A			30	3-3.0mm ² THHN COPPER WIRE 1-3.0mm ² TW GROUND WIRE	14.0mm ² PVC RPE
7	1-WP ACU	230	1,840	8.0A				30	3-3.0mm ² THHN COPPER WIRE 1-3.0mm ² TW GROUND WIRE	14.0mm ² PVC RPE
8	4-LIGHTING OUTLET 1-SHOCKLEY LIGHT	230	800	1.3A				33	3-3.0mm ² THHN COPPER WIRE 1-3.0mm ² TW GROUND WIRE	14.0mm ² PVC RPE
9	1-WP ACU	230	1,840			8.0A		30	3-3.0mm ² THHN COPPER WIRE 1-3.0mm ² TW GROUND WIRE	14.0mm ² PVC RPE
10	9-LIGHTING OUTLET 1-SHOCKLEY LIGHT	230	1,080			4.3A		30	3-3.0mm ² THHN COPPER WIRE 1-3.0mm ² TW GROUND WIRE	14.0mm ² PVC RPE
11	1-WP ACU	230	1,548			6.0A		30	3-3.0mm ² THHN COPPER WIRE 1-3.0mm ² TW GROUND WIRE	14.0mm ² PVC RPE
12	SPARE	230	—	—	—	—		30	—	—
			10,800	45.0A	11.2A	17.3A				

COMPUTATION:

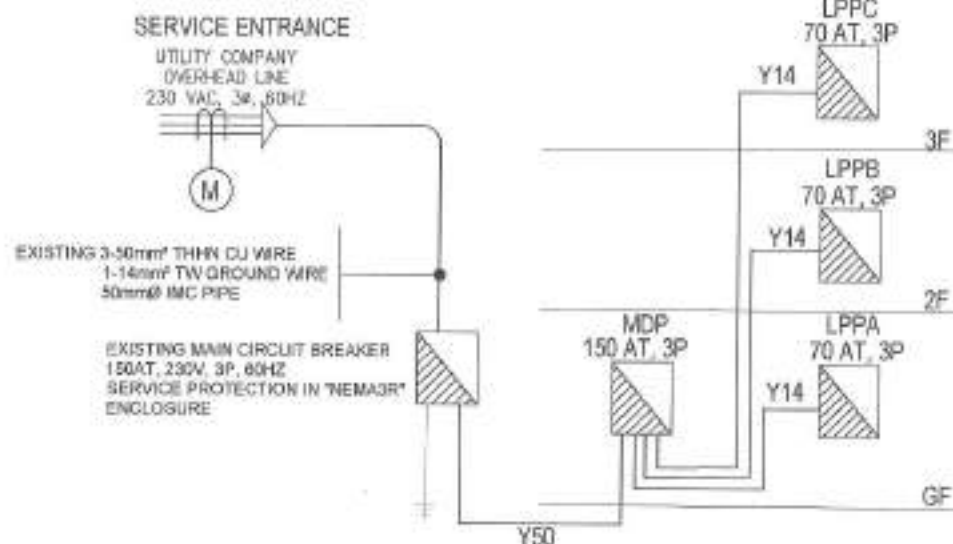
$$IT = 1.732 \times (45.0A) \times (208V) = 161.5A$$

$$IT = 161.5 \text{ AMPERES}$$

OVER CURRENT PROTECTION

USE: 75AT, 3P, 230V MOLDED CASE CIRCUIT BREAKER IN NEMA 1

MAIN FEEDER:

USE: 3 - 14.0mm² THHN & 1-8.0mm² TW GROUND WIRE IN 32mm² PVC RPE/32mm² BIC RPE


CODE	DESCRIPTION
Y50	1-14.0mm ² THHN 1-8.0mm ² TW GROUND WIRE IN 32mm ² PVC RPE
Y14	3-14.0mm ² THHN 1-8.0mm ² TW GROUND WIRE IN 32mm ² PVC RPE

1 SINGLE LINE DIAGRAM

SCALE: NTL

2 SCHEDULE OF LOADS

SCALE: NTL

 <p>Republika ng Pilipinas Lungsod ng Quezon CITY ENGINEERING DEPARTMENT</p>	PROJECT TITLE:	DRAWN BY:	SUBMITTED BY:	RECOMMENDING AGENCY:	APPROVED BY:	SHEET CONTENT:	SHEET NO.:	
	PROPOSED REHABILITATION OF HERBERT BAUTISTA MULTI-PURPOSE BUILDING AT BARANGAY GREATER LAGRO	DATE: 08.21.22					SINGLE LINE DIAGRAM SCHEDULE OF LOADS	EL-02
	LOCATION: BAGY, GREATER LAGRO, DISTRICT 4, QUEZON CITY	CHECKED BY:	ENGR. LEO S. DEL ROSARIO HEAD, PLANNING & PROGRAMMING DIVISION	ENGR. ISABANT R. VERZOSA, JR. CHIEF, ELECTRICAL ENGINEERING DIVISION	HON. MA. JOSEFINA G. BELMONTTE CITY MAYOR			1016
		REVISION NO.:						

SECOND FLOOR

LPPB-PROPOSED LIGHTING AND POWER PANEL

CKT. NO.	LOAD DESCRIPTION	VOLTS	VA	AMPERE LOAD				AT	SIZE OF	
				AB	BC	CA	3Ø		WIRED	CONDUITS
1	11-LIGHTING FIXTURES	220	880	2.4				30	2-15mm ² THHN COPPER WIRE 1-15mm ² TW GROUND WIRE	Ø 25mm PVC PIPE
2	14-LIGHTING FIXTURES	220	780	3.04				30	2-15mm ² THHN COPPER WIRE 1-15mm ² TW GROUND WIRE	Ø 25mm PVC PIPE
3	4-LIGHTING FIXTURES	220	450			1.80		30	2-15mm ² THHN COPPER WIRE 1-15mm ² TW GROUND WIRE	Ø 25mm PVC PIPE
4	2-HP SPOT TYPE	220	2,780			0.36		30	2-25mm ² THHN COPPER WIRE 1-15mm ² TW GROUND WIRE	Ø 35mm PVC PIPE
5	2-CONDUIT OUTLET 2-EMERGENCY LIGHT	220	1,840			0.41		30	2-25mm ² THHN COPPER WIRE 1-15mm ² TW GROUND WIRE	Ø 35mm PVC PIPE
6	2-HP SPOT TYPE	220	2,760			12.00		30	2-25mm ² THHN COPPER WIRE 1-15mm ² TW GROUND WIRE	Ø 35mm PVC PIPE
7	1-HP ACU	220	1,840	0.80				30	2-25mm ² THHN COPPER WIRE 1-15mm ² TW GROUND WIRE	Ø 35mm PVC PIPE
8	11-LIGHTING FIXTURES	220	880	0.36				30	2-15mm ² THHN COPPER WIRE 1-15mm ² TW GROUND WIRE	Ø 25mm PVC PIPE
9	SPARE	220	—					30	—	—
10	SPARE	220	—					30	—	—
			10,640	16.04	26.8	13.85				

COMPUTATION:

$$IT = 1.73 \times 16.04 \times 1.414 \times 220$$

$$IT = 48.30 \text{ AMPERES}$$

OVER CURRENT PROTECTION

USE : 70AT, 3P, 220V MOLDED CASE CIRCUIT BREAKER IN NEMA 1

MAIN FEEDER:

USE : 2 - 16.5mm² THHN & 1 6.5mm² TW GROUND WIRE IN 32mm PVC RFD55mm Ø PVC

THIRD FLOOR

LPPB-PROPOSED LIGHTING AND POWER PANEL

CKT. NO.	LOAD DESCRIPTION	VOLTS	VA	AMPERE LOAD				AT	SIZE OF	
				AB	BC	CA	3Ø		WIRED	CONDUITS
1	11-LIGHTING FIXTURES	220	880	2.4				30	2-15mm ² THHN COPPER WIRE 1-15mm ² TW GROUND WIRE	Ø 25mm PVC PIPE
2	12-LIGHTING FIXTURES	220	800	2.4				30	2-15mm ² THHN COPPER WIRE 1-15mm ² TW GROUND WIRE	Ø 25mm PVC PIPE
3	12-LIGHTING FIXTURES	220	800			2.0		30	2-15mm ² THHN COPPER WIRE 1-15mm ² TW GROUND WIRE	Ø 25mm PVC PIPE
4	8-LIGHTING FIXTURES	220	400			1.90		30	2-15mm ² THHN COPPER WIRE 1-15mm ² TW GROUND WIRE	Ø 25mm PVC PIPE
5	8-LIGHTING FIXTURES	220	400		1.80			30	2-15mm ² THHN COPPER WIRE 1-15mm ² TW GROUND WIRE	Ø 25mm PVC PIPE
6	2-CONDUIT OUTLET 2-EMERGENCY LIGHT	220	1,880			7.50		30	2-25mm ² THHN COPPER WIRE 1-15mm ² TW GROUND WIRE	Ø 35mm PVC PIPE
7	2-CONDUIT OUTLET 2-EMERGENCY LIGHT	220	1,880	0.8				30	2-25mm ² THHN COPPER WIRE 1-15mm ² TW GROUND WIRE	Ø 35mm PVC PIPE
8	1-HP ACU	220	1,840	0.80				30	2-25mm ² THHN COPPER WIRE 1-15mm ² TW GROUND WIRE	Ø 35mm PVC PIPE
9	1-HP ACU	220				0.80		30	2-25mm ² THHN COPPER WIRE 1-15mm ² TW GROUND WIRE	Ø 35mm PVC PIPE
10	1-HP ACU	220	1,840			0.80		30	2-25mm ² THHN COPPER WIRE 1-15mm ² TW GROUND WIRE	Ø 35mm PVC PIPE
11	2-CONDUIT OUTLET 2-EMERGENCY LIGHT	220	880		2.0			30	2-25mm ² THHN COPPER WIRE 1-15mm ² TW GROUND WIRE	Ø 35mm PVC PIPE
12	1-HP ACU	220	1,840			0.80		30	2-25mm ² THHN COPPER WIRE 1-15mm ² TW GROUND WIRE	Ø 35mm PVC PIPE
13	SPARE	220	—					30	—	—
14	SPARE	220	—					30	—	—
			14,400	22.74	21.75	20.21				

COMPUTATION:

$$IT = 1.73 \times 22.74 \times 1.414 \times 220$$

$$IT = 41.47 \text{ AMPERES}$$

OVER CURRENT PROTECTION

USE : 70AT, 3P, 220V MOLDED CASE CIRCUIT BREAKER IN NEMA 1

MAIN FEEDER:

USE : 2 - 16.5mm² THHN & 1 6.5mm² TW GROUND WIRE IN 32mm PVC RFD55mm Ø PVC

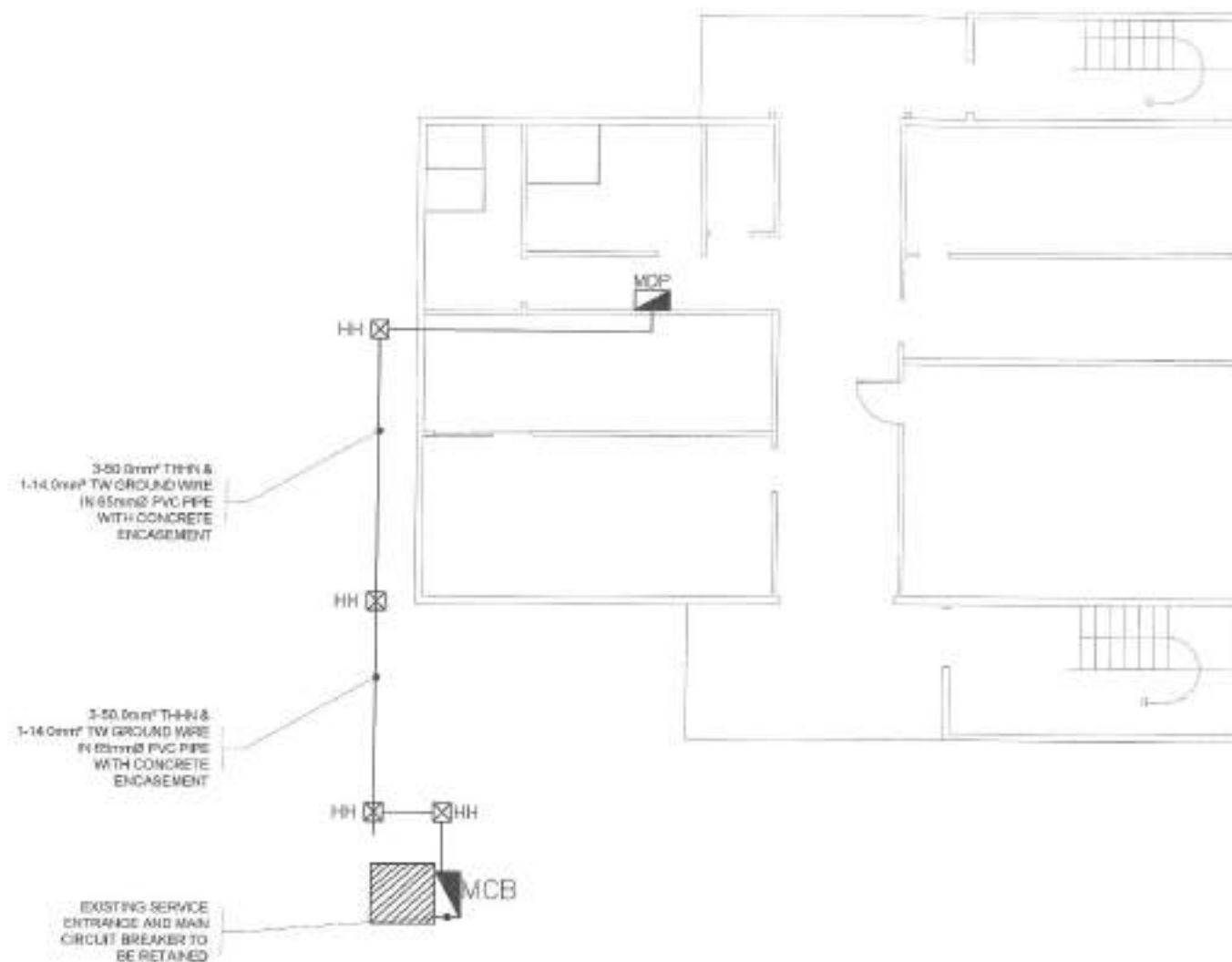
1 SCHEDULE OF LOADS

SCALE NTS.



Republika ng Pilipinas
Lungsod ng Quezon
CITY ENGINEERING DEPARTMENT

PROJECT TITLE: PROPOSED REHABILITATION OF HERBERT BAUTISTA MULTI-PURPOSE BUILDING AT BARANGAY GREATER LAGRO	DESIGNED BY: DATE: 09/27/22	SUBMITTED BY: 	RECOMMENDING APPROVAL: 	APPROVED BY: 	SHEET CONTENT: SCHEDULE OF LOADS	SHEET NO.: EL-03 11/16
LOCATION: BPO, GREATER LAGRO, DISTRICT 1, QUEZON CITY	REVISION NO.:	ENGR. LEO S. DEL ROSARIO HEAD, PLANNING & PROGRAMMING DIVISION	ENGR. ISAGANI R. VERZOSA, JR. DCC, CITY ENGINEERING DEPARTMENT	HON. MA. JOSEFINA G. BELMONTE CITY MAYOR		



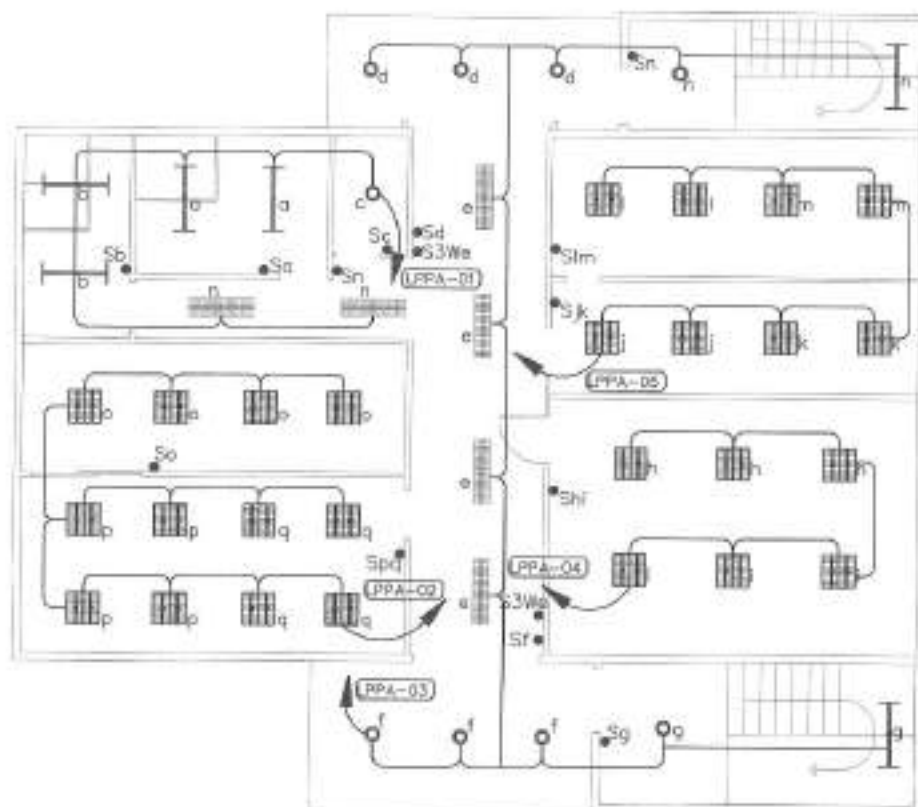
1 LAND DEVELOPMENT FEEDER LAYOUT

SCALE 1:100M



Republika ng Pilipinas
Lungsod ng Quezon
CITY ENGINEERING DEPARTMENT

PROJECT TITLE:	DRAWN BY:	SUBMITTED BY:	RECOMMENDING APPROVAL:	APPROVED BY:	SHEET CONTENT	SHEET NO.
PROPOSED REHABILITATION OF HERBERT BAUTISTA MULTI-PURPOSE BUILDING AT BARANGAY GREATER LAGRO	DATE: 09/27/22				LAND DEVELOPMENT FEEDER LAYOUT	EL-04
LOCATION: BRGY. GREATER LAGRO DISTRICT 4, QUEZON CITY	CHECKED BY:	ENGR. LEO E. DEL ROSARIO HEAD, PLANNING & PROGRAMMING DIVISION	ENGR. (SABAN) R. VERZOSA, JR. OIC, CITY ENGINEERING DEPARTMENT	HON. MA. JOSEFINA G. BELMONTÉ CITY MAJOR		12/16



NOTE:

1. REWIRING AND REPLACEMENT OF LIGHTING FIXTURES

1 GROUND FLOOR LIGHTING LAYOUT

SCALE 1:100M

2 SECOND FLOOR LIGHTING LAYOUT

SCALE 1:100M



Republika ng Pilipinas
Lungsod ng Quezon
CITY ENGINEERING DEPARTMENT

PROJECT TITLE:
**PROPOSED REHABILITATION OF
HERBERT BAUTISTA
MULTI-PURPOSE BUILDING AT
BARANGAY GREATER LAGRO**

LOCATION:
BRGY. GREATER LAGRO, DISTRICT 1, QUEZON CITY

DRAWN BY: *[Signature]*
DATE: 08.27.22
CHECKED BY: *[Signature]*
REVISION NO:

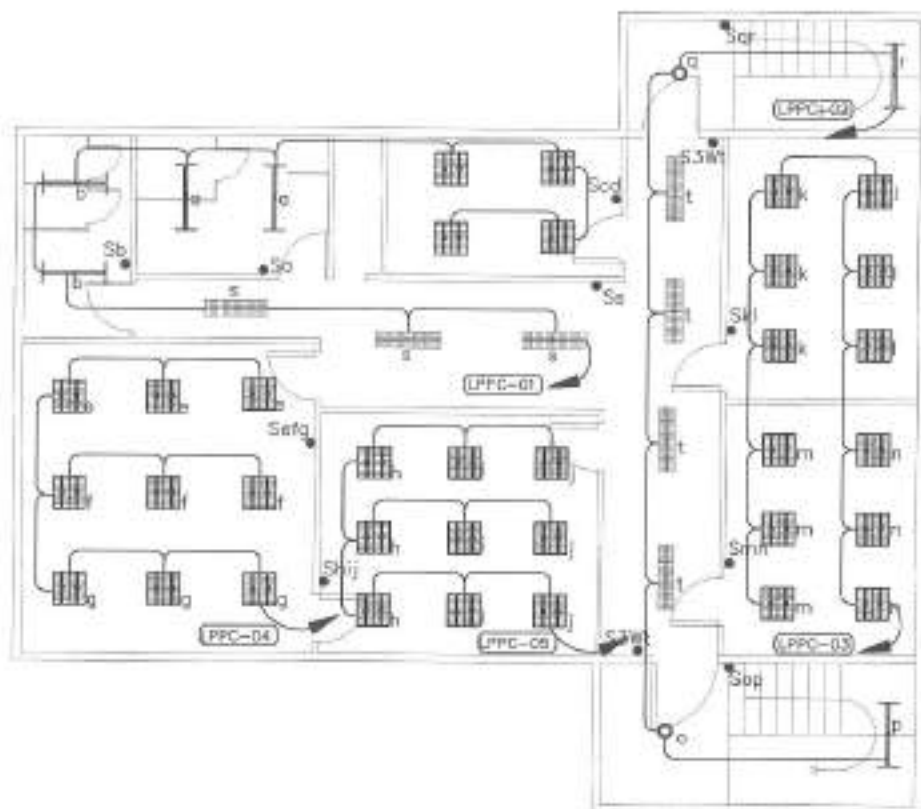
SUBMITTED BY: *[Signature]*
ENGR. LEO S. DEL ROSARIO
HEAD, PLANNING & PROGRAMMING DIVISION

RECOMMENDING APPROVAL: *[Signature]*
ENGR. JESUSANI R. VERZOSA, JR.
DEPUTY CHIEF ENGINEER

APPROVED BY: *[Signature]*
HON. MA. JOSEFINA G. BELMONT
CITY MAJOR

SHEET CONTENT:
GROUND FLOOR
LIGHTING LAYOUT
SECOND FLOOR
LIGHTING LAYOUT

SHEET NO:
EL-05
13/16



NOTE

1. REMOVING AND REPLACEMENT OF LIGHTING FIXTURES

1 THIRD FLOOR LIGHTING LAYOUT

SCALE 1:100M

2

FOURTH FLOOR LIGHTING LAYOUT

SCALE 1:100M



Republika ng Pilipinas
Lungsod ng Quezon
CITY ENGINEERING DEPARTMENT

PROJECT TITLE:
**PROPOSED REHABILITATION OF
HERBERT BAUTISTA
MULTI-PURPOSE BUILDING AT
BARANGAY GREATER LAGRO**

LOCATION:
BPO, GREATER LAGRO, DISTRICT 5, QUEZON CITY

DRAWN BY: *[Signature]*
DATE: 09-20-22
CHECKED BY: *[Signature]*
REVISION NO.:

SUBMITTED BY: *[Signature]*
ENGR. LEO S. DEL ROSARIO
HEAD - PLUMBING & PROGRAMMING DIVISION

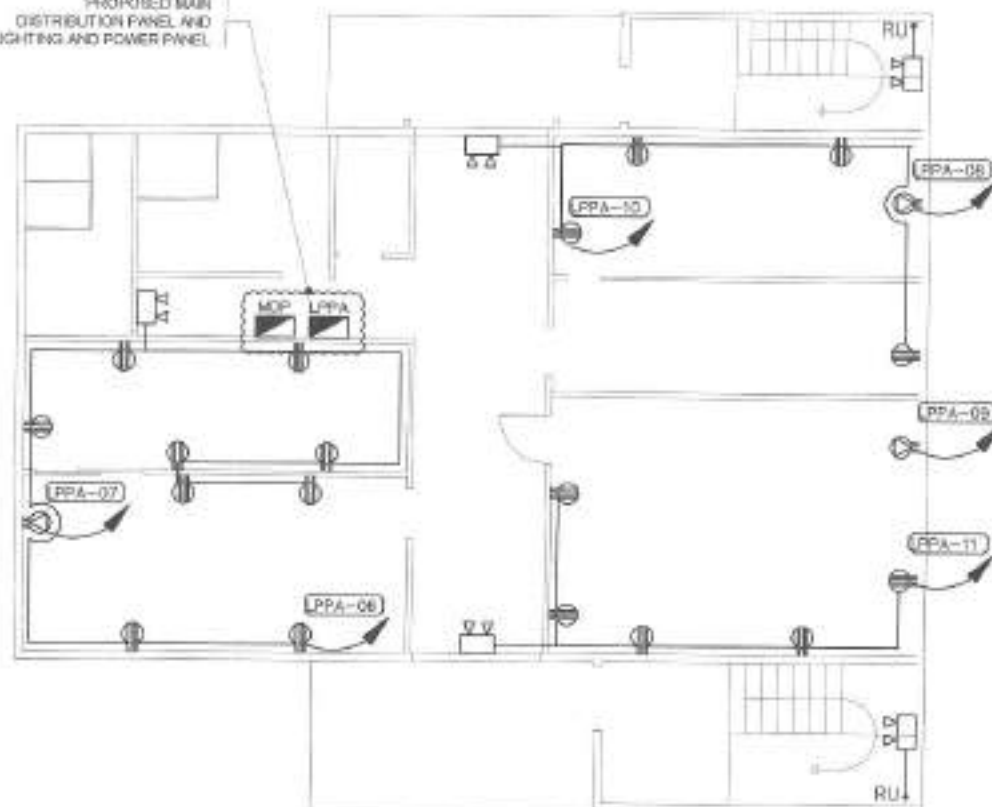
RECOMMENDING OFFICIAL:
ENGR. MAGNUS R. VERZOSA, JR.
CHIEF, CITY ENGINEERING DEPARTMENT

APPROVED BY:
HON. RA. JOSEFINA S. BELMONTE
CITY MAYOR

SHEET CONTENT
THIRD FLOOR LIGHTING
LAYOUT
FOURTH FLOOR LIGHTING
LAYOUT

SHEET NO.
EL-06
1416

PROPOSED MAIN
DISTRIBUTION PANEL AND
LIGHTING AND POWER PANEL



NOTE

1. REMOVING AND REPLACEMENT OF CONVENIENCE OUTLET

1 GROUND FLOOR POWER LAYOUT

SCALE 1:100M



Republika ng Pilipinas
Lungsod ng Quezon
CITY ENGINEERING DEPARTMENT

PROJECT TITLE:

PROPOSED REHABILITATION OF
HERBERT BAUTISTA
MULTI-PURPOSE BUILDING AT
BARANGAY GREATER LAGRO

LOCATION:

BRGY. GREATER LAGRO, DISTRICT 3, QUEZON CITY

DRAWN BY:

DATE: 08/21/22

CHECKED BY:

REVISIONS:

SUBMITTED BY:

ENGR. LEY S. DEL ROSARIO
M.E., PLUMBING & PROGRAMMING ENGINEER

RECOMMENDING APPROVAL:

ENGR. RAMON R. VERZOSA, JR.
D.E., CITY ENGINEERING DEPARTMENT

APPROVED BY:

HON. NA. JOSEFINA D. BELMONTI
CITY ENGINEER

SHEET CONTENT:

GROUND FLOOR POWER
LAYOUT
SECOND FLOOR POWER
LAYOUT

SHEET NO.

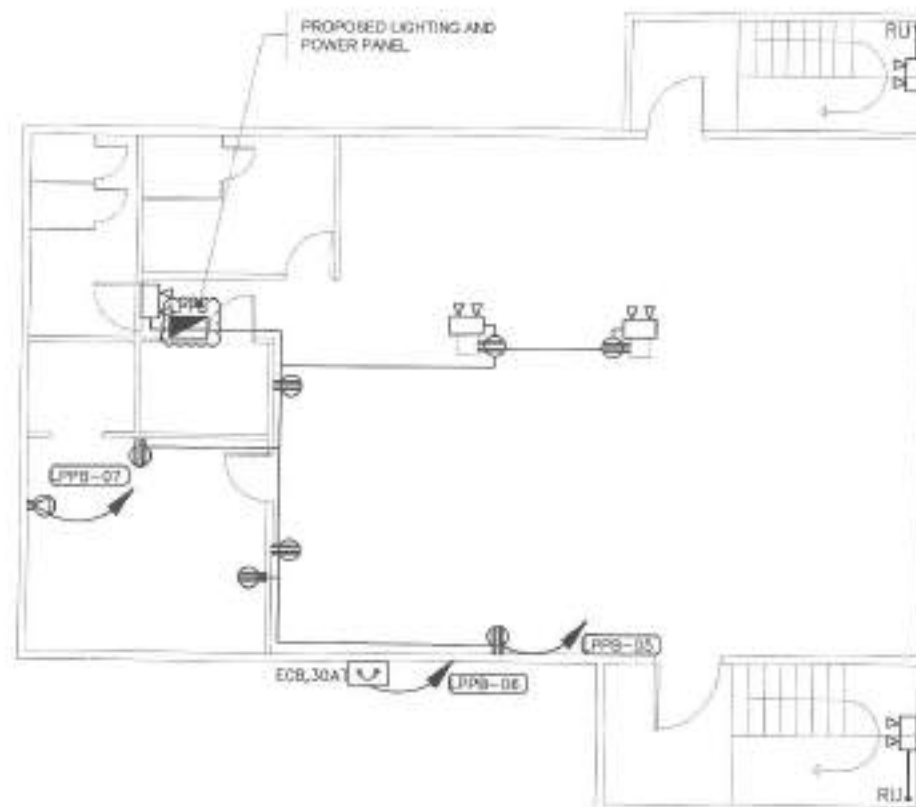
EL-07
15/16

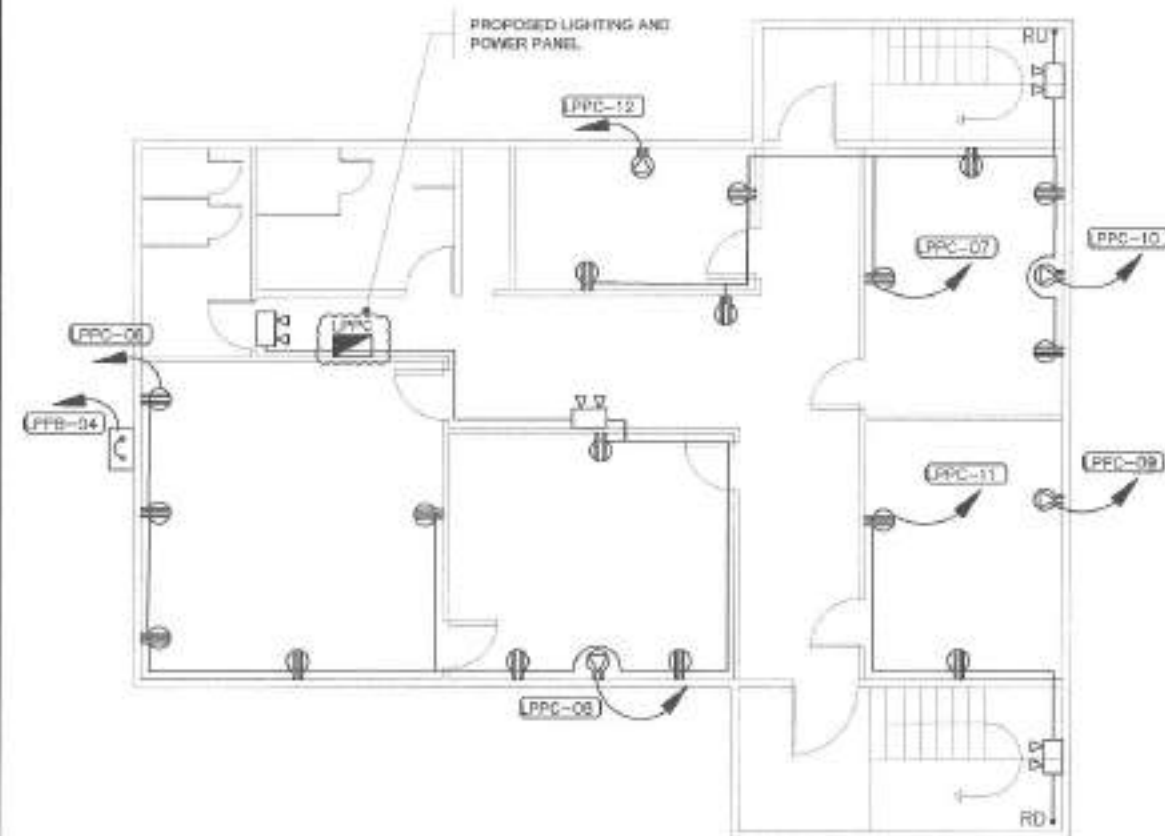
NOTE:

1. REMOVING AND REPLACEMENT OF CONVENIENCE OUTLET

2 SECOND FLOOR POWER LAYOUT

SCALE 1:100M





NOTE:


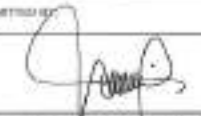


1. REMOVING AND REPLACEMENT OF CONVENIENCE OUTLET

1 THIRD FLOOR POWER LAYOUT

SCALE 1:100M

2 FOURTH FLOOR POWER LAYOUT

SCALE 1:100M

 <p>Republika ng Pilipinas Lungsod ng Quezon CITY ENGINEERING DEPARTMENT</p>	PROJECT TITLE:	DESIGNED BY:	SUBMITTED BY:	RECOMMENDING APPROVAL:	APPROVED BY:	SHEET CONTENT:	SHEET NO.:
	PROPOSED REHABILITATION OF HERBERT BAUTISTA MULTI-PURPOSE BUILDING AT BARANGAY GREATER LAGRO	DATE: 06.27.22 CHECKED BY:	 ENGR. LEO S. DEL ROSAL HEAD, PLANNING & PROGRAMMING DIVISION	 ENGR. ISAGANI R. VERZOSA, JR. DDC, CITY ENGINEERING DEPARTMENT	 HON. MA. JOSEFINA G. BELMONTE CITY MAYOR	THIRD FLOOR POWER LAYOUT FOURTH FLOOR POWER LAYOUT	EL-08 1616
LOCATION: Bldg. GREATER LAGRO, DISTRICT 8, QUEZON CITY		REVISION NO.:					

Section VIII. Bill of Quantities

Notes on the Bill of Quantities

Objectives

The objectives of the Bill of Quantities are:

- a. to provide sufficient information on the quantities of Works to be performed to enable Bids to be prepared efficiently and accurately; and
- b. when a Contract has been entered into, to provide a priced Bill of Quantities for use in the periodic valuation of Works executed.

In order to attain these objectives, Works should be itemized in the Bill of Quantities in sufficient detail to distinguish between the different classes of Works, or between Works of the same nature carried out in different locations or in other circumstances which may give rise to different considerations of cost. Consistent with these requirements, the layout and content of the Bill of Quantities should be as simple and brief as possible.

Daywork Schedule

A Daywork Schedule should be included only if the probability of unforeseen work, outside the items included in the Bill of Quantities, is high. To facilitate checking by the Entity of the realism of rates quoted by the Bidders, the Daywork Schedule should normally comprise the following:

- a. A list of the various classes of labor, materials, and Constructional Plant for which basic daywork rates or prices are to be inserted by the Bidder, together with a statement of the conditions under which the Contractor will be paid for work executed on a daywork basis.
- b. Nominal quantities for each item of Daywork, to be priced by each Bidder at Daywork rates as Bid. The rate to be entered by the Bidder against each basic Daywork item should include the Contractor's profit, overheads, supervision, and other charges.

Provisional Sums

A general provision for physical contingencies (quantity overruns) may be made by including a provisional sum in the Summary Bill of Quantities. Similarly, a contingency allowance for possible price increases should be provided as a provisional sum in the Summary Bill of Quantities. The inclusion of such provisional sums often facilitates budgetary approval by avoiding the need to request periodic supplementary approvals as the future need arises. Where such provisional sums or contingency allowances are used, the SCC should state the manner in which they will be used, and under whose authority (usually the Procuring Entity's Representative's).

The estimated cost of specialized work to be carried out, or of special goods to be supplied, by other contractors should be indicated in the relevant part of the Bill of Quantities as a particular provisional sum with an appropriate brief description. A separate procurement procedure is normally carried out by the Procuring Entity to select such specialized contractors. To provide an element of competition among the Bidders in respect of any facilities, amenities, attendance, etc., to be provided by the successful Bidder as prime Contractor for the use and convenience of the specialist contractors, each related provisional sum should be followed by an item in the Bill of Quantities inviting the Bidder to quote a sum for such amenities, facilities, attendance, etc.

Signature Box

A signature box shall be added at the bottom of each page of the Bill of Quantities where the authorized representative of the Bidder shall affix his signature. Failure of the authorized representative to sign each and every page of the Bill of Quantities shall be a cause for rejection of his bid.

These Notes for Preparing a Bill of Quantities are intended only as information for the Procuring Entity or the person drafting the Bidding Documents. They should not be included in the final documents.

PROJECT TITLE: PROPOSED REHABILITATION OF HERBERT BAUTISTA MULTI-PURPOSE BUILDING

LOCATION : BARANGAY GREATER LAGRO, DISTRICT 5, QUEZON CITY

PROJECT NO. : 22 - 00147

DURATION : One Hundred Twenty (120) Calendar Days

BREAKDOWN OF COST

Item Code	Item of Work (Description)	MATERIALS COST	LABOR COST	INDIRECT COST	AGGREGATE COST
GR	GENERAL REQUIREMENTS				
OGR	OTHER GENERAL REQUIREMENTS				
SW	SITE WORKS				
CWS	CIVIL / STRUCTURAL WORKS				
AW	ARCHITECTURAL WORKS				
S/PW	SANITARY / PLUMBING WORKS				
EW	ELECTRICAL WORKS				
UTI	UTILITY AND ANCILLARY WORKS				

TOTAL COST P _____

LUMP SUM BID IN WORDS : _____

Contractor : _____

BILL OF QUANTITIES
(Building Construction/Rehabilitation Project)

PROJECT TITLE : PROPOSED REHABILITATION OF HERBERT BAUTISTA MULTI-PURPOSE BUILDING

LOCATION : BARANGAY GREATER LAGRO, DISTRICT 5, QUEZON CITY

PROJECT NO. : 22 - 00147

DURATION : One Hundred Twenty (120) Calendar Days

SCOPE OF WORK :

- GR General Requirements** include billboard(s).
- OGR Other General Requirements (NON-O.C.M.)** include, but not limited to:
- 1 Temporary water system including water meter/sub-meter and connections.
 - 2 Temporary electrical system including electric meter/sub-meter and connections.
 - 3 Scaffolding for general use (rental).
 - 4 Clearing, hauling, disposal of construction materials and debris.
- SW Site Works:**
- 1 Demolition/removal works.
- CWS Civil / Structural Works:**
- 1 Masonry works include restoration of concrete
 - 2 Roofing works include installation of roofing and bended materials.
 - 3 Moisture protection include waterproofing works.
 - 4 Metal works include fabrication of metal structures.
- AW Architectural Works (Finishes as indicated in the plans):**
- 1 Floor finishes include tile works for flooring and other floor finishes.
 - 2 Wall finishes include tile works for walls and other wall finishes.
 - 3 Ceiling works include installation of ceilings with framings.
 - 4 Painting works include interior walls, ceiling, and steel surfaces.
 - 5 Fabricated materials include installation of doors.
- S/PW Sanitary/Plumbing Works:**
- 1 Installation of roughing-ins, valves, appurtenances and supports.
 - 2 Installation of water efficient sanitary/plumbing fixtures and accessories.
- EW Electrical Works:**
- 1 Installation of roughing-ins and wirings.
 - 2 Installation of system devices, energy efficient lighting fixtures and components, panelboards and accessories.
- UTI Utility and Ancillary Works**
- 1 Installation of handhole and concrete encasement
- O Others (included in O.C.M.)**
- 1 Provision of construction, health and safety such as safety gears, medical kit, etc.
 - 2 Preparation of shop drawings, as necessary.
 - 3 Preparation of as-built plans (signed and sealed by the respective professional(s)).
 - 4 Testing and commissioning works shall be performed as per standard procedures.

ITEM CODE	WORK DESCRIPTION AND SCOPE OF WORKS	QTY	UNIT	UNIT COST	TOTAL COST
GR	GENERAL REQUIREMENTS				

ITEM CODE	WORK DESCRIPTION AND SCOPE OF WORKS	QTY	UNIT	UNIT COST	TOTAL COST
SPL7	Billboard (1.20m x 2.40m in Plywood)	1	piece	₱	₱
		MATERIALS COST GR			₱
			LABOR COST GR		
			DIRECT COST GR		₱

ITEM CODE	WORK DESCRIPTION AND SCOPE OF WORKS	QTY	UNIT	UNIT COST	TOTAL COST
OGR	OTHER GENERAL REQUIREMENTS				
OGR0301	Temporary Water Facility	1	unit	₱	₱
OGR0302	Temporary Electrical Facility	1	unit		
OGR05	Scaffolding (Rental)	299	sq.m.		
		Subtotal OGR301-OGR05			₱
OGR01	Clearing, Hauling and Disposal of Construction Materials and Debris	11	t.l.	₱	₱
				Subtotal OGR01	₱
		MATERIALS COST OGR			₱
				LABOR COST OGR	
				DIRECT COST OGR	₱
SW	SITE WORKS				
DEMV002	Chipping Works for Pipelines and Utilities (Horizontal) / Concrete Topping	27	cu.m.	₱	₱
DEMV011	Removal of Lavatory	9	set		
DEMV012	Removal of Urinal	6	set		
DEMV013	Removal of Water Closet	9	set		
DEMV014	Removal of Ceiling Board	570	sq.m.		
DEMV021	Removal of Wall Tiles	136	sq.m.		
DEMV021	Removal of Floor Tiles	74	sq.m.		
DEMV025a	Removal of Existing Roof Sheet	162	sq.m.		
				DIRECT COST SW	₱
CWS	CIVIL / STRUCTURAL WORKS				
CWSMA	Masonry Works				
CWSMA05	Plastering, 25mm Thick for Ordinary Walls	52	sq.m.	₱	₱
CWSMA12	Concrete Floor Topping 50mm with Welded Wire Mesh 1.6mm Thick	50	sq.m.		
CWSMA21	Concrete/Floor Topping 25mm (Tiling Works)	79	sq.m.		
CWSMA22	Concrete/Floor Topping 50mm (Electrical Works)	9	sq.m.		
CWSPRW	Roofing Works				
CWSPRW0701	Pre Painted Rib Type Long Span Metal Roofing Sheet, 0.45mm Thick GA 26 with Connection Accessories	170	sq.m.		
CWSPRW0601	Stainless Roof Gutter (0.40mm x 24")	12	l.m.		
CWSPRW0704	Pre Painted G.I. Flashing GA 26 x 0.60m	38	l.m.		
CWSPRW0706	Pre Painted G.I. Gutter GA 26 x 0.60m	8	l.m.		
CWSMPW	Waterproofing Works				
CWSMPW03	Membrane Type (Roof Deck)	50	sq.m.		
CWSMPW05	Polyurethane (Comfort Room)	82	sq.m.		

ITEM CODE	WORK DESCRIPTION AND SCOPE OF WORKS	QTY	UNIT	UNIT COST	TOTAL COST
CWSME	Metal Works				
CWSME07	Structural Steel				
CWSME0703	50mm x 50mm x 4mm Angle Bar	25	kg		
CWSME0710	G.I. Pipe 50mmØ	227	kg		
CI/S	Common Items / Supplies				
CI/S02	Bolts and Nuts				
CI/S02005	16mm Ø x 200mm Anchor Bolt	12	piece		

ITEM CODE	WORK DESCRIPTION AND SCOPE OF WORKS	QTY	UNIT	UNIT COST	TOTAL COST
MC	Miscellaneous and Consumables				
MC/G05	Grinding Disc, 4"	7	piece		
MC/G06	Hacksaw Blade	5	piece		
MC/G19	Acetylene Tank (Refill)	2	tank		
MC/G26	Drill Bit, 20mm Ø (Concrete)	5	piece		
MC/G27	Drill Bit, 20mm Ø (Metal)	5	piece		
MC/G29	Oxygen Tank (Refill)	4	tank		
MC/G36	Welding Rod (Steel)	4	kg		
		MATERIALS COST CWS			₱
			LABOR COST CWS		
			DIRECT COST CWS		₱
AW	ARCHITECTURAL WORKS				
AW04	Floor Finishes				
AW0401	300 x 300mm Non-Skid Homogeneous Floor Tiles including Adhesive and Grout	59	sq.m.	₱	₱
AW0404	600 x 600mm Non-Skid Homogeneous Floor Tiles including Adhesive and Grout	20	sq.m.		
AW03	Wall Finishes				
AW0305	300 x 300mm Homogeneous Wall Tiles including Adhesive and Grout	142	sq.m.		
AW02	Ceiling Finishes				
AW0208	6mm Thick Moisture Resistant Gypsum Board including Framing and Accessories	599	sq.m.		
AWP	Painting Works				
AWP01	Painting Materials (3 coats)				
AWP0101	Flat Latex Paint Finish (Interior Wall - 3 Coats)	116	sq.m.		
AWP0105	Flat Latex Paint Finish (Ceiling - 3 Coats)	599	sq.m.		
AWP0106	Epoxy Enamel Paint Finish (Steel Member - 3 Coats)	12	sq.m.		
		Materials Cost AW04-AWP			₱
		Labor Cost AW04-AWP			
			Subtotal AW04-AWP		₱
AW01	Fabricated Materials				
AWD	Doors and Jambs				
AWD01	Doors Installation				
AWD0101	Doors with Hardware and Accessories				
AWD010123	1.0m x 2.10m Metal Door with Panic Hardware, Outdoor	4	set	₱	₱
			Materials Cost AW01		₱
			Labor Cost AW01		
			Subtotal AW01		₱
		MATERIALS COST AW			₱

ITEM CODE	WORK DESCRIPTION AND SCOPE OF WORKS	QTY	UNIT	UNIT COST	TOTAL COST
			LABOR COST AW		
			DIRECT COST AW		₱
S/PW	SANITARY / PLUMBING WORKS				
S/PW01	Sewer Line / Storm Drainage System				
S/PW0101	Roughing-Ins				
S/PW010102	50mm Ø, PVC Pipe with Hub	54	piece	₱	₱
S/PW010103	75mm Ø, PVC Pipe with Hub	10	piece		

ITEM CODE	WORK DESCRIPTION AND SCOPE OF WORKS	QTY	UNIT	UNIT COST	TOTAL COST
S/PW010104	100mm Ø, PVC Pipe with Hub	15	piece		
S/PW010105	150mm Ø, PVC Pipe with Hub	7	piece		
S/PW010110	32mm Ø, P-Trap	9	piece		
S/PW010111	50mm Ø, P-Trap	27	piece		
S/PW010114	50mmØ 1/4 Bend	13	piece		
S/PW010116	100mm Ø, 1/4 Bend	4	piece		
S/PW010117	150mmØ 1/4 Bend	4	piece		
S/PW010120	50mm Ø, 1/8 Bend	90	piece		
S/PW010121	75mm Ø, 1/8 Bend	27	piece		
S/PW010122	100mm Ø, 1/8 Bend	15	piece		
S/PW010130	100mmØ x 50mmØ Wye	30	piece		
S/PW010131	100mmØ x 75mmØ Wye	9	piece		
S/PW010132	100mmØ x 100mmØ Wye	5	piece		
S/PW010167	100mmØ x 50mmØ Tee	10	piece		
S/PW010169	100mmØ x 75mmØ Tee	3	piece		
S/PW010184	100mmØ Cleanout	6	piece		
S/PW010185	150mmØ Cleanout	4	piece		
S/PW03	Sanitary Fixtures, Fittings and Accessories				
S/PW0301	Bidet with Complete Fittings and Accessories (Water Efficient)	9	set		
S/PW0308	Lavatory (Over the Counter) with Complete Fittings and Accessories	9	set		
S/PW0321	Urinal , Flush Valve with Complete Fittings and Accessories (Water Efficient)	6	set		
S/PW04	Comfort Room Accessories				
S/PW0402	Tissue Holder, Stainless	9	piece		
S/PW0404	Soap Holder, Stainless	9	piece		
S/PW0405	Soap Dispenser, Stainless	2	piece		
S/PW0406	Wall Metal Door Hook Hanger	9	piece		
S/PW05	Plumbing Fixtures, Fittings and Accessories				
S/PW0501	Angle Valve, Single Way, Stainless	5	piece		
S/PW0502	Angle Valve, Two Way, Stainless	9	piece		
S/PW0503	Flexible Hose, Stainless Steel	14	piece		
S/PW06	Drains				
S/PW0601	Floor Drain, 100mmØ, Stainless	15	piece		
S/PW0605	Deck Drain, 100mmØ	3	piece		
S/PW0608	Roof Drain, 100mmØ	4	piece		
S/PW07	Pipe Hangers and Supports				
S/PW0706	For Horizontal Pipes More than 50mmØ (1m Interval)	7	l.m.		
S/PW0707	For Vertical Pipes Greater than 50mmØ (1m Interval)	9	l.m.		
S/PW0708	Downspout Brackets	9	l.m.		
MC	Miscellaneous and Consumables				
MC/G	(Common Items)				
MC/G06	Hacksaw Blade	4	piece		
MC/G13	All around Sealant	15	tube		

ITEM CODE	WORK DESCRIPTION AND SCOPE OF WORKS	QTY	UNIT	UNIT COST	TOTAL COST
MC/G14	Solvent Cement, 400cc	20	can		
MC/G18	Waste Cloth	5	kg		
		MATERIALS COST S/PW			₱
			LABOR COST S/PW		
			DIRECT COST S/PW		₱

ITEM CODE	WORK DESCRIPTION AND SCOPE OF WORKS	QTY	UNIT	UNIT COST	TOTAL COST
EW	ELECTRICAL WORKS				
EW01	Pipes				
EW0101	20mmØ PVC Pipe	640	piece	₱	₱
EW0102	25mmØ PVC Pipe	116	piece		
EW0103	32mmØ PVC Pipe	15	piece		
EW0106	65mmØ PVC Pipe	25	piece		
EW05	Fittings and Accessories				
EW05001	20mmØ PVC Elbow	300	piece		
EW05002	25mmØ PVC Elbow	42	piece		
EW05003	32mmØ PVC Elbow	6	piece		
EW05006	65mmØ PVC Elbow	10	piece		
EW05010	20mmØ PVC Adaptor	580	piece		
EW05011	25mmØ PVC Adaptor	30	piece		
EW05012	32mmØ PVC Adaptor	12	piece		
EW05015	65mmØ PVC Adaptor	4	piece		
EW05022	20mmØ PVC Locknut and Bushing	580	pair		
EW05023	25mmØ PVC Locknut and Bushing	30	pair		
EW05024	32mmØ PVC Locknut and Bushing	12	pair		
EW05027	65mmØ PVC Locknut and Bushing	4	pair		
EW06	Boxes and Fabricated Pullbox				
EW0601	50mm x 100mm PVC Utility Box	120	piece		
EW0602	100mm x 100mm PVC Junction Box with Cover	170	piece		
EW09	Wires and Cables				
EW0901	THHN Wires				
EW090102a	3.5mm² THHN Wire	33	roll		
EW090103a	5.5mm² THHN Wire	6	roll		
EW090105a	14.0mm² THHN Wire	1	roll		
EW090109	50.0mm² THHN Wire	150	l.m.		
EW0903	TW Wires				
EW090302a	3.5mm² TW Wire	20	roll		
EW090304b	8.0mm² TW Wire	50	l.m.		
EW090305b	14.0mm² TW Wire	50	l.m.		
EW13	Panel Board				
ASSY	MDP Main: 150AT/250AF, 3P, 230V, MCCB Branches: 4 - 70 AT, 3P, Bolt-On Enclosure: NEMA 1 with Ground Terminals and	1	assy		
ASSY	LPPA Main: 70AT/100AF, 3P, 230V, MCCB Branches: 8- 20 AT, 2P, Bolt-On 4- 30 AT, 2P, Bolt-On Enclosure: NEMA 1 with Ground Terminals and	1	assy		
ASSY	LPPB Main: 70AT/100AF, 3P, 230V, MCCB Branches: 5- 20 AT, 2P, Bolt-On 5- 30 AT, 2P, Bolt-On	1	assy		

ITEM CODE	WORK DESCRIPTION AND SCOPE OF WORKS	QTY	UNIT	UNIT COST	TOTAL COST
	Enclosure: NEMA 1 with Ground Terminals and				
ASSY	LPPC Main: 70AT/100AF, 3P, 230V, MCCB Branches: 8- 20 AT, 2P, Bolt-On 6- 30 AT, 2P, Bolt-On Enclosure: NEMA 1 with Ground Terminals and Terminal Lugs	1	assy		

ITEM CODE	WORK DESCRIPTION AND SCOPE OF WORKS	QTY	UNIT	UNIT COST	TOTAL COST
EW1303	Enclosed Circuit Breaker (ECB)				
EW130304	30AT, 2P , Bolt-On	2	assy		
EW10	Wiring Devices and Other Fixtures				
EW1001	Convenience Outlet with Grounding, One-Gang	15	piece		
EW1002	Convenience Outlet with Grounding, Two-Gang	42	piece		
EW1003	Outlet with Grounding, One-Gang, for ACU, Heavy Duty	8	piece		
EW1015	Switch with Plate and Cover, One-Gang	25	piece		
EW1016	Switch with Plate and Cover, Two-Gang	14	piece		
EW1017	Switch with Plate and Cover, Three-Gang	3	piece		
EW1018	Switch with Plate and Cover, Three-Way	4	piece		
EW11	Lighting Fixtures (Energy Efficient)				
EW11059	Emergency Light, Twinhead	15	piece		
EW11067	Surface Mounted Box Type Lighting Fixture with 1-18W Daylight LED Tube	21	set		
EW11037	600mm x 600mm with 2 x 10w LED, Troffer Type, with Complete Accessories, Recessed Type	96	set		
EW11034	300mm x 1200mm, 1 x 18w LED, Troffer Type, with Complete Accessories, Recessed Type	13	set		
EW11144	Wall Lamp with 12W LED Bulb	2	set		
EW11120	150mm Ø Round Recessed Pinlight (case)	13	piece		
EW11096	10W LED Bulb	13	piece		
EW16	Pipe Hangers and Supports				
EW1601	Horizontal Layout of Pipe	300	l.m.		
EW1602	Vertical Layout of Pipe	5	l.m.		
MC	Miscellaneous and Consumables				
MC/G06	Hacksaw Blade	8	roll		
MC/G13	All Around Sealant	30	tube		
MC/G14	Solvent Cement, 400cc	7	can		
MC/G17	Torch with Butane	6	set		
MC/G18	Rugs	15	kg		
MC/G37	G.I. Tie Wire, Ga.16 (for Wire / Cable Pulling)	30	kg		
MC/E01	Electrical Tape	50	roll		
MC/E03	Pulling Lubricant	8	gal		
MC/E04	Rubber Tape	20	roll		
				MATERIALS COST EW	₱
				LABOR COST EW	
				DIRECT COST EW	₱
UTI	UTILITY AND ANCILLARY WORKS				
UT01	Electrical Utilities				
UT0102	Handhole				
UT010202	Hand Hole (0.40m x 0.40m x 0.35m)	4	unit	₱	₱
UT0108	Concrete Encasement				

ITEM CODE	WORK DESCRIPTION AND SCOPE OF WORKS	QTY	UNIT	UNIT COST	TOTAL COST
UT010803	Concrete Encasement(0.40m Width X 0.35m Height)	35	l.m.		
			MATERIALS COST UTI		₱
			LABOR COST UTI		
			DIRECT COST UTI		₱

ITEM CODE	WORK DESCRIPTION AND SCOPE OF WORKS	QTY	UNIT	UNIT COST	TOTAL COST
-----------	-------------------------------------	-----	------	-----------	------------

SUMMARY

ITEM CODE	WORK DESCRIPTION AND SCOPE OF WORKS	TOTAL COST
OGR	OTHER GENERAL REQUIREMENTS	₱
	TOTAL ESTIMATED COST A	₱
GR SW CWS AW S/PW EW UTI	GENERAL REQUIREMENTS SITE WORKS CIVIL / STRUCTURAL WORKS ARCHITECTURAL WORKS SANITARY / PLUMBING WORKS ELECTRICAL WORKS UTILITY AND ANCILLARY WORKS	₱
Note: Strictly enforce health protocol relative to the latest applicable DPWH Memorandum.	TOTAL DIRECT COST B	₱
	Overhead, Contingencies and Miscellaneous Expenses (OCM)	
	PROFIT	
	TOTAL ESTIMATED COST B	₱
	TOTAL DIRECT COST A	₱
	TOTAL ESTIMATED COST B	₱
	TOTAL ESTIMATED COST	₱
	VAT	
	TOTAL APPROVED BUDGET FOR THE CONTRACT	₱

Section IX. Checklist of Technical and Financial Documents

Notes on the Checklist of Technical and Financial Documents

The prescribed documents in the checklist are mandatory to be submitted in the Bid, but shall be subject to the following:

- a. GPPB Resolution No. 09-2020 on the efficient procurement measures during a State of Calamity or other similar issuances that shall allow the use of alternate documents in lieu of the mandated requirements; or
- b. any subsequent GPPB issuances adjusting the documentary requirements after the effectivity of the adoption of the PBDs.

The BAC shall be checking the submitted documents of each Bidder against this checklist to ascertain if they are all present, using a non-discretionary “pass/fail” criterion pursuant to Section 30 of the 2016 revised IRR of RA No. 9184.

Checklist of Technical and Financial Documents

I. TECHNICAL COMPONENT ENVELOPE

Class “A” Documents

Legal Documents

- ☐ (a) Valid PhilGEPS Registration Certificate (Platinum Membership) (all pages);
and
- ☐ (b) Registration certificate from Securities and Exchange Commission (SEC), Department of Trade and Industry (DTI) for sole proprietorship, or Cooperative Development Authority (CDA) for cooperatives or its equivalent document;
and
- ☐ (c) Mayor’s or Business permit issued by the city or municipality where the principal place of business of the prospective bidder is located, or the equivalent document for Exclusive Economic Zones or Areas;
and
- ☐ (e) Tax clearance per E.O. No. 398, s. 2005, as finally reviewed and approved by the Bureau of Internal Revenue (BIR).

Technical Documents

- ☐ (f) Statement of the prospective bidder of all its ongoing government and private contracts, including contracts awarded but not yet started, if any, whether similar or not similar in nature and complexity to the contract to be bid (*please see attached prescribed forms required by the QC – BAC for Infrastructure and Consultancy*); **and**
- ☐ (g) Statement of the bidder’s Single Largest Completed Contract (SLCC) similar to the contract to be bid, except under conditions provided under the rules with an attached Notice of Award, Notice to Proceed, Contract and Certificate of Acceptance (*please see attached prescribed form required by the QC – BAC for Infrastructure and Consultancy*); **and**
- ☐ (h) Philippine Contractors Accreditation Board (PCAB) License;
or
Special PCAB License in case of Joint Ventures;
and registration for the type and cost of the contract to be bid; **and**
- ☐ (i) Original copy of Bid Security. If in the form of a Surety Bond, submit also a certification issued by the Insurance Commission;
or
Original copy of Notarized Bid Securing Declaration; **and**
- ☐ (j) Project Requirements, which shall include the following:
 - ☐ a. Organizational chart for the contract to be bid;
 - ☐ b. List of contractor’s key personnel (*e.g.*, Project Manager, Project Engineers, Materials Engineers, and Foremen), to be assigned to the contract to be bid, with their complete qualification and experience data (*please see attached prescribed form required by the QC – BAC for Infrastructure and Consultancy*);
 - ☐ c. List of contractor’s major equipment units, which are owned, leased, and/or under purchase agreements, supported by proof of ownership or certification of availability of equipment from the equipment

lessor/vendor for the duration of the project, as the case may be (*please see attached prescribed form required by the QC – BAC for Infrastructure and Consultancy*); **and**

- ☐ (k) Original duly signed Omnibus Sworn Statement (OSS); **and** if applicable, Original Notarized Secretary's Certificate in case of a corporation, partnership, or cooperative; or Original Special Power of Attorney of all members of the joint venture giving full power and authority to its officer to sign the OSS and do acts to represent the Bidder.

Additional Technical Requirements:

- ☐ • Certificate of Site Inspection or Affidavit of Site Inspection as part of Omnibus Sworn Statement
- ☐ • Affidavit of Undertaking for Key Personnel and Equipment (*please see attached prescribed form required by the QC – BAC for Infrastructure and Consultancy*)
- ☐ • Equipment Utilization Schedule
- ☐ • Manpower Schedule
- ☐ • Construction Schedule and S-Curve
- ☐ • PERT-CMP
- ☐ • Construction Methods

Financial Documents

- ☐ (l) The prospective bidder's audited financial statements, showing, among others, the prospective bidder's total and current assets and liabilities, stamped "received" by the BIR or its duly accredited and authorized institutions, for the preceding calendar year which should not be earlier than two (2) years from the date of bid submission; **and**
- ☐ (m) The prospective bidder's computation of Net Financial Contracting Capacity (NFCC) (*please see attached prescribed form required by the QC – BAC for Infrastructure and Consultancy*).

Class "B" Documents

- ☐ (n) If applicable, duly signed joint venture agreement (JVA) in accordance with RA No. 4566 and its IRR in case the joint venture is already in existence; **or** duly notarized statements from all the potential joint venture partners stating that they will enter into and abide by the provisions of the JVA in the instance that the bid is successful.

II. FINANCIAL COMPONENT ENVELOPE

- ☐ (o) Original of duly signed and accomplished Financial Bid Form; **and**

Other documentary requirements under RA No. 9184

- ☐ (p) Original of duly signed Bid Prices in the Bill of Quantities; **and**
- ☐ (q) Duly accomplished Detailed Estimates Form, including a summary sheet indicating the unit prices of construction materials, labor rates, and equipment rentals used in coming up with the Bid; **and**
- ☐ (r) Cash Flow by Quarter.

Bid Form for the Procurement of Infrastructure Projects
[shall be submitted with the Bid]

BID FORM

Date : _____
Project Identification No. : _____

To: *[name and address of Procuring Entity]*

Having examined the Philippine Bidding Documents (PBDs) including the Supplemental or Bid Bulletin Numbers *[insert numbers]*, the receipt of which is hereby duly acknowledged, we, the undersigned, declare that:

- a. We have no reservation to the PBDs, including the Supplemental or Bid Bulletins, for the Procurement Project: *[insert name of contract]*;
- b. We offer to execute the Works for this Contract in accordance with the PBDs;
- c. The total price of our Bid in words and figures, excluding any discounts offered below is: *[insert information]*;
- d. The discounts offered and the methodology for their application are: *[insert information]*;
- e. The total bid price includes the cost of all taxes, such as, but not limited to: *[specify the applicable taxes, e.g. (i) value added tax (VAT), (ii) income tax, (iii) local taxes, and (iv) other fiscal levies and duties]*, which are itemized herein and reflected in the detailed estimates,
- f. Our Bid shall be valid within the a period stated in the PBDs, and it shall remain binding upon us at any time before the expiration of that period;
- g. If our Bid is accepted, we commit to obtain a Performance Security in the amount of *[insert percentage amount]* percent of the Contract Price for the due performance of the Contract, or a Performance Securing Declaration in lieu of the the allowable forms of Performance Security, subject to the terms and conditions of issued GPPB guidelines¹ for this purpose;
- h. We are not participating, as Bidders, in more than one Bid in this bidding process, other than alternative offers in accordance with the Bidding Documents;
- i. We understand that this Bid, together with your written acceptance thereof included in your notification of award, shall constitute a binding contract between us, until a formal Contract is prepared and executed; and
- j. We understand that you are not bound to accept the Lowest Calculated Bid or any other Bid that you may receive.

¹ currently based on GPPB Resolution No. 09-2020

- k. We likewise certify/confirm that the undersigned, is the duly authorized representative of the bidder, and granted full power and authority to do, execute and perform any and all acts necessary to participate, submit the bid, and to sign and execute the ensuing contract for the [Name of Project] of the [Name of the Procuring Entity].
- l. We acknowledge that failure to sign each and every page of this Bid Form, including the Bill of Quantities, shall be a ground for the rejection of our bid.

Name: _____

Legal Capacity: _____

Signature: _____

Duly authorized to sign the Bid for and behalf of: _____

Date: _____

Bid Securing Declaration Form

[shall be submitted with the Bid if bidder opts to provide this form of bid security]

REPUBLIC OF THE PHILIPPINES)

CITY OF _____) S.S.

BID SECURING DECLARATION **Project Identification No.: *[Insert number]***

To: *[Insert name and address of the Procuring Entity]*

I/We, the undersigned, declare that:

1. I/We understand that, according to your conditions, bids must be supported by a Bid Security, which may be in the form of a Bid Securing Declaration.
2. I/We accept that: (a) I/we will be automatically disqualified from bidding for any procurement contract with any procuring entity for a period of two (2) years upon receipt of your Blacklisting Order; and, (b) I/we will pay the applicable fine provided under Section 6 of the Guidelines on the Use of Bid Securing Declaration, within fifteen (15) days from receipt of the written demand by the procuring entity for the commission of acts resulting to the enforcement of the bid securing declaration under Sections 23.1(b), 34.2, 40.1 and 69.1, except 69.1(f), of the IRR of RA No. 9184; without prejudice to other legal action the government may undertake.
3. I/We understand that this Bid Securing Declaration shall cease to be valid on the following circumstances:
 - a. Upon expiration of the bid validity period, or any extension thereof pursuant to your request;
 - b. I am/we are declared ineligible or post-disqualified upon receipt of your notice to such effect, and (i) I/we failed to timely file a request for reconsideration or (ii) I/we filed a waiver to avail of said right; and
 - c. I am/we are declared the bidder with the Lowest Calculated Responsive Bid, and I/we have furnished the performance security and signed the Contract.

IN WITNESS WHEREOF, I/We have hereunto set my/our hand/s this ____ day of *[month]* *[year]* at *[place of execution]*.

[Insert NAME OF BIDDER OR ITS AUTHORIZED REPRESENTATIVE]

[Insert signatory's legal capacity]

Affiant

[Jurat]

[Format shall be based on the latest Rules on Notarial Practice]

Omnibus Sworn Statement (Revised)
[shall be submitted with the Bid]

REPUBLIC OF THE PHILIPPINES)
CITY/MUNICIPALITY OF _____) S.S.

AFFIDAVIT

I, [Name of Affiant], of legal age, [Civil Status], [Nationality], and residing at [Address of Affiant], after having been duly sworn in accordance with law, do hereby depose and state that:

1. *[Select one, delete the other:]*

[If a sole proprietorship:] I am the sole proprietor or authorized representative of [Name of Bidder] with office address at [address of Bidder];

[If a partnership, corporation, cooperative, or joint venture:] I am the duly authorized and designated representative of [Name of Bidder] with office address at [address of Bidder];

2. *[Select one, delete the other:]*

[If a sole proprietorship:] As the owner and sole proprietor, or authorized representative of [Name of Bidder], I have full power and authority to do, execute and perform any and all acts necessary to participate, submit the bid, and to sign and execute the ensuing contract for [Name of the Project] of the [Name of the Procuring Entity], as shown in the attached duly notarized Special Power of Attorney;

[If a partnership, corporation, cooperative, or joint venture:] I am granted full power and authority to do, execute and perform any and all acts necessary to participate, submit the bid, and to sign and execute the ensuing contract for [Name of the Project] of the [Name of the Procuring Entity], as shown in the attached [state title of attached document showing proof of authorization (e.g., duly notarized Secretary's Certificate, Board/Partnership Resolution, or Special Power of Attorney, whichever is applicable)];

3. [Name of Bidder] is not "blacklisted" or barred from bidding by the Government of the Philippines or any of its agencies, offices, corporations, or Local Government Units, foreign government/foreign or international financing institution whose blacklisting rules have been recognized by the Government Procurement Policy Board, **by itself or by relation, membership, association, affiliation, or controlling interest with another blacklisted person or entity as defined and provided for in the Uniform Guidelines on Blacklisting;**

4. Each of the documents submitted in satisfaction of the bidding requirements is an authentic copy of the original, complete, and all statements and information provided therein are true and correct;

5. [Name of Bidder] is authorizing the Head of the Procuring Entity or its duly authorized representative(s) to verify all the documents submitted;

6. *[Select one, delete the rest:]*

[If a sole proprietorship:] The owner or sole proprietor is not related to the Head of the Procuring Entity, members of the Bids and Awards Committee (BAC), the Technical Working Group, and the BAC Secretariat, the head of the Project Management Office or the end-user unit, and the project consultants by consanguinity or affinity up to the third civil degree;

[If a partnership or cooperative:] None of the officers and members of [Name of Bidder] is related to the Head of the Procuring Entity, members of the Bids and Awards Committee (BAC), the Technical Working Group, and the BAC Secretariat, the head of the Project

Management Office or the end-user unit, and the project consultants by consanguinity or affinity up to the third civil degree;

[If a corporation or joint venture:] None of the officers, directors, and controlling stockholders of *[Name of Bidder]* is related to the Head of the Procuring Entity, members of the Bids and Awards Committee (BAC), the Technical Working Group, and the BAC Secretariat, the head of the Project Management Office or the end-user unit, and the project consultants by consanguinity or affinity up to the third civil degree;

7. *[Name of Bidder]* complies with existing labor laws and standards; and
8. *[Name of Bidder]* is aware of and has undertaken the responsibilities as a Bidder in compliance with the Philippine Bidding Documents, which includes:
 - a. Carefully examining all of the Bidding Documents;
 - b. Acknowledging all conditions, local or otherwise, affecting the implementation of the Contract;
 - c. Making an estimate of the facilities available and needed for the contract to be bid, if any; and
 - d. Inquiring or securing Supplemental/Bid Bulletin(s) issued for the *[Name of the Project]*.
9. *[Name of Bidder]* did not give or pay directly or indirectly, any commission, amount, fee, or any form of consideration, pecuniary or otherwise, to any person or official, personnel or representative of the government in relation to any procurement project or activity.
10. **In case advance payment was made or given, failure to perform or deliver any of the obligations and undertakings in the contract shall be sufficient grounds to constitute criminal liability for Swindling (Estafa) or the commission of fraud with unfaithfulness or abuse of confidence through misappropriating or converting any payment received by a person or entity under an obligation involving the duty to deliver certain goods or services, to the prejudice of the public and the government of the Philippines pursuant to Article 315 of Act No. 3815 s. 1930, as amended, or the Revised Penal Code.**
11. We pledge that the project will be completed in accordance and congruency with the approved plans and programs.

IN WITNESS WHEREOF, I have hereunto set my hand this ___ day of _____ 20__ at _____, Philippines.

[Insert NAME OF BIDDER OR ITS AUTHORIZED REPRESENTATIVE]

[Insert signatory's legal capacity]
Affiant

[Jurat]

[Format shall be based on the latest Rules on Notarial Practice]

Contract Agreement Form for the Procurement of Infrastructure Projects (Revised)

[not required to be submitted with the Bid, but it shall be submitted within ten (10) days after receiving the Notice of Award]

CONTRACT AGREEMENT

THIS AGREEMENT, made this *[insert date]* day of *[insert month]*, *[insert year]* between *[name and address of PROCURING ENTITY]* (hereinafter called the "Entity") and *[name and address of Contractor]* (hereinafter called the "Contractor").

WHEREAS, the Entity is desirous that the Contractor execute *[name and identification number of contract]* (hereinafter called "the Works") and the Entity has accepted the Bid for *[contract price in words and figures in specified currency]* by the Contractor for the execution and completion of such Works and the remedying of any defects therein.

NOW THIS AGREEMENT WITNESSETH AS FOLLOWS:

1. In this Agreement, words and expressions shall have the same meanings as are respectively assigned to them in the Conditions of Contract hereinafter referred to.
2. The following documents as required by the 2016 revised Implementing Rules and Regulations of Republic Act No. 9184 shall be deemed to form and be read and construed as part of this Agreement, viz.:

- a. Philippine Bidding Documents (PBDs);
 - i. Drawings/Plans;
 - ii. Specifications;
 - iii. Bill of Quantities;
 - iv. General and Special Conditions of Contract;
 - v. Supplemental or Bid Bulletins, if any;
- b. Winning bidder's bid, including the Eligibility requirements, Technical and Financial Proposals, and all other documents or statements submitted;

Bid form, including all the documents/statements contained in the Bidder's bidding envelopes, as annexes, and all other documents submitted (e.g., Bidder's response to request for clarifications on the bid), including corrections to the bid, if any, resulting from the Procuring Entity's bid evaluation;

- c. Performance Security;
 - d. Notice of Award of Contract and the Bidder's conforme thereto; and
 - e. Other contract documents that may be required by existing laws and/or the Procuring Entity concerned in the PBDs. **Winning bidder agrees that additional contract documents or information prescribed by the GPPB that are subsequently required for submission after the contract execution, such as the Notice to Proceed, Variation Orders, and Warranty Security, shall likewise form part of the Contract.**
3. In consideration for the sum of *[total contract price in words and figures]* or such other sums as may be ascertained, *[Named of the bidder]* agrees to *[state the object of the contract]* in accordance with his/her/its Bid.

4. The *[Name of the procuring entity]* agrees to pay the above-mentioned sum in accordance with the terms of the Bidding.

IN WITNESS whereof the parties thereto have caused this Agreement to be executed the day and year first before written.

[Insert Name and Signature] [Insert Name and Signature]

[Insert Signatory's Legal Capacity] [Insert Signatory's Legal Capacity]

for: for:

[Insert Procuring Entity] [Insert Name of Supplier]

Acknowledgment

[Format shall be based on the latest Rules on Notarial Practice]

LIST OF ALL ON-GOING GOVERNMENT AND PRIVATE CONTRACTS

NAME OF CONTRACTOR: _____

PROJECT TITLE (Name of the Contract) & EXACT PROJECT LOCATION	DATE OF CONTRACT	CONTRACT DURATION	PROJECT OWNER & POSTAL ADDRESS	NATURE OF WORK	CONTRACTOR'S ROLE (SOLE CONTRACTOR, SUBCONTRACTOR, PARTNER IN A JV) and PERCENTAGE OF PARTICIPATION	TOTAL CONTRACT VALUE AT AWARD	DATE OF COMPLETION or ESTIMATED COMPLETION TIME	TOTAL CONTRACT VALUE AT COMPLETION IF APPLICABLE	PERCENTAGE		VALUE OF OUTSTANDING WORKS (IN PHP)
									ACTUAL ACCOMPLISHMENT	PLANNED ACCOMPLISHMENT	
									TOTAL AMOUNT (Php) OF OUTSTANDING WORKS		

PHOTOCOPY ADDITIONAL FORMS, IF NECESSARY

Page _____ of _____

SINGLE LARGEST COMPLETED CONTRACT SIMILAR TO THE CONTRACT TO BE BID

NAME OF CONTRACTOR: _____

PROJECT TITLE: _____

PROJECT TITLE (Name of the Contract) & EXACT PROJECT LOCATION	DATE OF CONTRACT	CONTRACT DURATION	PROJECT OWNER & POSTAL ADDRESS	NATURE OF WORK	CONTRACTOR'S ROLE (SOLE CONTRACTOR, SUBCONTRACTOR, PARTNER IN A JV) and PERCENTAGE OF PARTICIPATION	TOTAL CONTRACT VALUE AT AWARD	DATE OF COMPLETION or ESTIMATED COMPLETION TIME	TOTAL CONTRACT VALUE AT COMPLETION IF APPLICABLE

PHOTOCOPY ADDITIONAL FORMS, IF NECESSARY

Page _____ of _____

LIST OF MAJOR EQUIPMENT TO BE USED FOR THE PROJECT

NAME OF CONTRACTOR: _____

PROJECT TITLE: _____

TYPE	DESCRIPTION / CAPACITY	SERIAL NO.	YEAR ACQUIRED	PRESENT LOCATION (SPECIFIC ADDRESS)	STATUS OF AVAILABILITY (OWNED/LEASED)

A. LIST OF KEY CONSTRUCTION PERSONNEL TO BE ASSIGNED TO THE PROJECT

NAME OF CONTRACTOR: _____

PROJECT TITLE: _____

NAME	POSITION	AGE	EDUCATIONAL ATTAINMENT	TYPE OF CONSTRUCTION EXPERIENCE	NO.OF YEARS WITH THE CONTRACTOR	PROFESSION	PRC NO.

COMPUTATION OF NET FINANCIAL CONTRACTING CAPACITY (NFCC)

NAME OF BIDDER: _____

CURRENT ASSETS*		PHP	_____
(LESS) CURRENT LIABILITIES*	(LESS)	PHP	_____
NETWORTH		PHP	_____
NETWORTH x 15	x 15	PHP	_____
(LESS) VALUE OF ALL OUTSTANDING ON-GOING CONTRACTS**	(LESS)	PHP	_____
(LESS) VALUE OF ALL AWARDED BUT NOT YET STARTED CONTRACTS AS OF DATE**	(LESS)	PHP	_____
NET FINANCIAL CONTRACTING CAPACITY		PHP	_____

NOTES: * CURRENT ASSETS AND LIABILITIES BASED ON AUDITED FINANCIAL STATEMENT FOR THE PRECEDING CALENDAR YEAR SUBMITTED TO B.I.R.

 ** BASED ON LIST OF ON-GOING AND AWRDED BUT NOT VEY STARTED CONTRACTS SUBMITTED

REPUBLIC OF THE PHILIPPINES)

_____) S.S.

AFFIDAVIT OF UNDERTAKING

I, _____ of legal age, Filipino, _____ **[OFFICER OR REPRESENTATIVE]**

with office address at _____ after having been duly sworn to in accordance with law, hereby voluntary depose and state:

That I am duly authorized representative of the **[Name of Bidder]** to execute this undertaking as evidenced by Secretary's Certificate and Board Resolution.

That **[Name of Bidder]** bidding for the (Name of Project)

That relative to the aforementioned Project, the **[Name of Bidder]** hereby undertake that the equipment to be use and the key personnel to be assign shall exclusively be used and will only perform to the said project until its completion.

That I am executing this affidavit to attest to the truth of the foregoing and in compliance with the submission of the technical requirements for the public bidding of the said project.

IN WITNESS HEREOF, I have hereunto signed my name below this _____ day of _____ at _____.

AFFIANT FURTHER SAYETH NAUGHT.

Affiant

SUBSCRIBED AND SWORN TO BEFORE ME this _____ day of _____
in _____

affiant exhibiting to me his/her _____ issued at _____
on _____.

Doc. No. ;
Page No. ;
Book No. ;
Series of 2020

Notary Public

