

# **PHILIPPINE BIDDING DOCUMENTS**

# **Procurement of INFRASTRUCTURE PROJECTS**

Government of the Republic of the Philippines

**PROPOSED REHABILITATION OF GABALDON BUILDING  
AND GROUND IMPROVEMENT AT QUEZON CITY HIGH  
SCHOOL**

**Project number:  
23-00009**

**Sixth Edition  
July 2020**

# Preface

These Philippine Bidding Documents (PBDs) for the procurement of Infrastructure Projects (hereinafter referred to also as the “Works”) through Competitive Bidding have been prepared by the Government of the Philippines for use by all branches, agencies, departments, bureaus, offices, or instrumentalities of the government, including government-owned and/or -controlled corporations, government financial institutions, state universities and colleges, local government units, and autonomous regional government. The procedures and practices presented in this document have been developed through broad experience, and are for mandatory use in projects that are financed in whole or in part by the Government of the Philippines or any foreign government/foreign or international financing institution in accordance with the provisions of the 2016 revised Implementing Rules and Regulations (IRR) of Republic Act (RA) No. 9184.

The PBDs are intended as a model for admeasurements (unit prices or unit rates in a bill of quantities) types of contract, which are the most common in Works contracting.

The Bidding Documents shall clearly and adequately define, among others: (i) the objectives, scope, and expected outputs and/or results of the proposed contract; (ii) the eligibility requirements of Bidders; (iii) the expected contract duration; and (iv) the obligations, duties, and/or functions of the winning Bidder.

Care should be taken to check the relevance of the provisions of the PBDs against the requirements of the specific Works to be procured. If duplication of a subject is inevitable in other sections of the document prepared by the Procuring Entity, care must be exercised to avoid contradictions between clauses dealing with the same matter.

Moreover, each section is prepared with notes intended only as information for the Procuring Entity or the person drafting the Bidding Documents. They shall not be included in the final documents. The following general directions should be observed when using the documents:

- a. All the documents listed in the Table of Contents are normally required for the procurement of Infrastructure Projects. However, they should be adapted as necessary to the circumstances of the particular Project.
- b. Specific details, such as the “*name of the Procuring Entity*” and “*address for bid submission*,” should be furnished in the Instructions to Bidders, Bid Data Sheet, and Special Conditions of Contract. The final documents should contain neither blank spaces nor options.
- c. This Preface and the footnotes or notes in italics included in the Invitation to Bid, BDS, General Conditions of Contract, Special Conditions of Contract, Specifications, Drawings, and Bill of Quantities are not part of the text of the final document, although they contain instructions that the Procuring Entity should strictly follow.
- d. The cover should be modified as required to identify the Bidding Documents as to the names of the Project, Contract, and Procuring Entity, in addition to date of issue.

- e. Modifications for specific Procurement Project details should be provided in the Special Conditions of Contract as amendments to the Conditions of Contract. For easy completion, whenever reference has to be made to specific clauses in the Bid Data Sheet or Special Conditions of Contract, these terms shall be printed in bold typeface on Sections I (Instructions to Bidders) and III (General Conditions of Contract), respectively.
- f. For guidelines on the use of Bidding Forms and the procurement of Foreign-Assisted Projects, these will be covered by a separate issuance of the Government Procurement Policy Board.

# TABLE OF CONTENTS

<b>Glossary of Terms, Abbreviations, and Acronyms.....</b>	<b>5</b>
<b>Section I. Invitation to Bid .....</b>	<b>8</b>
<b>Section II. Instructions to Bidders.....</b>	<b>9</b>
1. Scope of Bid .....	10
2. Funding Information .....	10
3. Bidding Requirements.....	10
4. Corrupt, Fraudulent, Collusive, Coercive, and Obstructive Practices .....	10
5. Eligible Bidders.....	11
6. Origin of Associated Goods .....	11
7. Subcontracts .....	11
8. Pre-Bid Conference.....	12
9. Clarification and Amendment of Bidding Documents.....	12
10. Documents Comprising the Bid: Eligibility and Technical Components .....	12
11. Documents Comprising the Bid: Financial Component .....	13
12. Alternative Bids .....	13
13. Bid Prices .....	13
14. Bid and Payment Currencies.....	13
15. Bid Security.....	14
16. Sealing and Marking of Bids.....	14
17. Deadline for Submission of Bids .....	14
18. Opening and Preliminary Examination of Bids .....	14
19. Detailed Evaluation and Comparison of Bids .....	14
20. Post Qualification.....	15
21. Signing of the Contract .....	15
<b>Section III. Bid Data Sheet.....</b>	<b>16</b>
<b>Section IV. General Conditions of Contract .....</b>	<b>19</b>
1. Scope of Contract.....	20
2. Sectional Completion of Works .....	20
3. Possession of Site.....	20
4. The Contractor's Obligations.....	20
5. Performance Security .....	20
6. Site Investigation Reports .....	21

7.	Warranty.....	21
8.	Liability of the Contractor.....	21
9.	Termination for Other Causes .....	21
10.	Dayworks .....	21
11.	Program of Work.....	22
12.	Instructions, Inspections and Audits .....	22
13.	Advance Payment.....	22
14.	Progress Payments .....	22
15.	Operating and Maintenance Manuals.....	22
<b>Section V. Special Conditions of Contract.....</b>		<b>24</b>
<b>Section VI. Specifications .....</b>		<b>26</b>
<b>Section VII. Drawings.....</b>		<b>28</b>
<b>Section VIII. Bill of Quantities .....</b>		<b>29</b>
<b>Section IX. Checklist of Technical and Financial Documents.....</b>		<b>31</b>

# ***Glossary of Terms, Abbreviations, and Acronyms***

**ABC** – Approved Budget for the Contract.

**ARCC** – Allowable Range of Contract Cost.

**BAC** – Bids and Awards Committee.

**Bid** – A signed offer or proposal to undertake a contract submitted by a bidder in response to and in consonance with the requirements of the bidding documents. Also referred to as *Proposal* and *Tender*. (2016 revised IRR, Section 5[c])

**Bidder** – Refers to a contractor, manufacturer, supplier, distributor and/or consultant who submits a bid in response to the requirements of the Bidding Documents. (2016 revised IRR, Section 5[d])

**Bidding Documents** – The documents issued by the Procuring Entity as the bases for bids, furnishing all information necessary for a prospective bidder to prepare a bid for the Goods, Infrastructure Projects, and/or Consulting Services required by the Procuring Entity. (2016 revised IRR, Section 5[e])

**BIR** – Bureau of Internal Revenue.

**BSP** – Bangko Sentral ng Pilipinas.

**CDA** – Cooperative Development Authority.

**Consulting Services** – Refer to services for Infrastructure Projects and other types of projects or activities of the GOP requiring adequate external technical and professional expertise that are beyond the capability and/or capacity of the GOP to undertake such as, but not limited to: (i) advisory and review services; (ii) pre-investment or feasibility studies; (iii) design; (iv) construction supervision; (v) management and related services; and (vi) other technical services or special studies. (2016 revised IRR, Section 5[i])

**Contract** – Refers to the agreement entered into between the Procuring Entity and the Supplier or Manufacturer or Distributor or Service Provider for procurement of Goods and Services; Contractor for Procurement of Infrastructure Projects; or Consultant or Consulting Firm for Procurement of Consulting Services; as the case may be, as recorded in the Contract Form signed by the parties, including all attachments and appendices thereto and all documents incorporated by reference therein.

**Contractor** – is a natural or juridical entity whose proposal was accepted by the Procuring Entity and to whom the Contract to execute the Work was awarded. Contractor as used in these Bidding Documents may likewise refer to a supplier, distributor, manufacturer, or consultant.

**CPI** – Consumer Price Index.

**DOLE** – Department of Labor and Employment.

**DTI** – Department of Trade and Industry.

**Foreign-funded Procurement or Foreign-Assisted Project** – Refers to procurement whose funding source is from a foreign government, foreign or international financing institution as specified in the Treaty or International or Executive Agreement. (2016 revised IRR, Section 5[b]).

**GFI** – Government Financial Institution.

**GOCC** – Government-owned and/or –controlled corporation.

**Goods** – Refer to all items, supplies, materials and general support services, except Consulting Services and Infrastructure Projects, which may be needed in the transaction of public businesses or in the pursuit of any government undertaking, project or activity, whether in the nature of equipment, furniture, stationery, materials for construction, or personal property of any kind, including non-personal or contractual services such as the repair and maintenance of equipment and furniture, as well as trucking, hauling, janitorial, security, and related or analogous services, as well as procurement of materials and supplies provided by the Procuring Entity for such services. The term “related” or “analogous services” shall include, but is not limited to, lease or purchase of office space, media advertisements, health maintenance services, and other services essential to the operation of the Procuring Entity. (2016 revised IRR, Section 5[r])

**GOP** – Government of the Philippines.

**Infrastructure Projects** – Include the construction, improvement, rehabilitation, demolition, repair, restoration or maintenance of roads and bridges, railways, airports, seaports, communication facilities, civil works components of information technology projects, irrigation, flood control and drainage, water supply, sanitation, sewerage and solid waste management systems, shore protection, energy/power and electrification facilities, national buildings, school buildings, hospital buildings, and other related construction projects of the government. Also referred to as *civil works or works*. (2016 revised IRR, Section 5[u])

**LGUs** – Local Government Units.

**NFCC** – Net Financial Contracting Capacity.

**NGA** – National Government Agency.

**PCAB** – Philippine Contractors Accreditation Board.

**PhilGEPS** - Philippine Government Electronic Procurement System.

**Procurement Project** – refers to a specific or identified procurement covering goods, infrastructure project or consulting services. A Procurement Project shall be described, detailed, and scheduled in the Project Procurement Management Plan prepared by the agency which shall be consolidated in the procuring entity's Annual Procurement Plan. (GPPB Circular No. 06-2019 dated 17 July 2019)

**PSA** – Philippine Statistics Authority.

**SEC** – Securities and Exchange Commission.

**SLCC** – Single Largest Completed Contract.

**UN** – United Nations.



## ***Section I. Invitation to Bid***

### **Notes on the Invitation to Bid**

The Invitation to Bid (IB) provides information that enables potential Bidders to decide whether to participate in the procurement at hand. The IB shall be posted in accordance with Section 21.2 of the 2016 revised IRR of RA No. 9184.

Apart from the essential items listed in the Bidding Documents, the IB should also indicate the following:

- a. The date of availability of the Bidding Documents, which shall be from the time the IB is first advertised/posted until the deadline for the submission and receipt of bids;
- b. The place where the Bidding Documents may be acquired or the website where it may be downloaded;
- c. The deadline for the submission and receipt of bids; and
- d. Any important bid evaluation criteria.

The IB should be incorporated into the Bidding Documents. The information contained in the IB must conform to the Bidding Documents and in particular to the relevant information in the Bid Data Sheet.



**REPUBLIC OF THE PHILIPPINES**  
**QUEZON CITY GOVERNMENT**  
**BIDS AND AWARDS COMMITTEE FOR INFRASTRUCTURE &**  
**CONSULTANCY**



2<sup>nd</sup> floor, Finance Building, Procurement Department, Quezon City Hall Complex, Elliptical Road, Quezon City

March 29, 2023

### Invitation to Bid

No	Project No.	Project Name	Location	Amount	Duration Cal. Days	Office	Source Fund
<b><u>Buildings – Small B</u></b>							
1	23-00001	Proposed Repainting of Perimeter Gate and Fence at Sauyo Elementary School	Sauyo	1,010,487.87	30	Department of Engineering	Special Educational Fund
2	23-00002	Proposed Rehabilitation and Completion of Third Floor Extension Room of QCPSTA Building (Phase 2)	Vasra	1,756,498.10	60	Department of Engineering	Engineering Department
3	23-00003	Proposed Replacement of Stand Pipe and Installation of Gate along Interior of Anonas Street	Quirino 3-A	1,835,494.59	60	Department of Engineering	Engineering Department – Continuing Appropriation
4	23-00005	Proposed Rehabilitation of Fire Sub Station	Paligsahan	3,166,287.57	90	Department of Engineering	Engineering Department
5	23-00006	Proposed Rehabilitation of Tennis Court Roofing	Project 6	3,472,785.25	45	Department of Engineering	Engineering Department
6	23-00007	Proposed Construction of Multi-Purpose Covered Court at GSIS Village (Phase 2)	Bahay Toro	4,256,102.96	90	Department of Engineering	Engineering Department
7	23-00008	Proposed Rehabilitation of four (4) Buildings, Façade, Soccer Field sidewalk and Gymnasium at Quezon City Science High School	Sto. Cristo	7,174,246.58	90	Department of Engineering	Special Educational Fund
8	23-00009	Proposed Rehabilitation of Gabaldon Building and Ground Improvement of Quezon City High School	Sacred Heart	11,298,003.60	120	Department of Engineering	Special Educational Fund
<b><u>Buildings – Medium A</u></b>							
9	23-00011	Proposed Construction of QCGH STP	Bahay Toro	69,000,406.91	210	Department of Engineering	OCM-20% Community Development Fund
10	23-00012	Proposed Land Development and Construction of Transition Housing Units (Staging/Temporary Housing) at Pook Marilag	Krus na Ligas	79,453,764.53	360	City Architect	Local Disaster Risk Reduction and Management Fund – Continuing Appropriation

11	23-00013	Proposed Construction of Housing Units No. 33 (Baesa) Phase 2	Baesa	120,125,711.30	360	City Architect	Housing Community Development Resettlement Department
12	23-00014	Proposed Construction of Multi-Level Multi-Purpose Building (Basketball Court and Offices)	Lourdes	140,467,777.02	300	Department of Engineering	OCM-20% Community Development Fund
<b><u>Buildings – Medium B</u></b>							
13	23-00015	Proposed Construction of Five (5) storey with Roof Deck Multi-Purpose Hall	Batasan Hills	162,460,181.24	360	Department of Engineering	OCM-20% Community Development Fund
<b><u>Bridge – Medium A</u></b>							
14	23-00016	Proposed Construction of Scenic Elevator and Interconnecting Bridge at Civic Center B (Public Works Building) and Civic Center A (Commerce Building)	Central	62,784,217.24	330	Department of Engineering	Engineering Department
<b><u>Parks – Small B</u></b>							
15	23-00017	Proposed Fabrication and Installation of Environmental Graphics Design (EGD) Signages along Gora Lane	Various Barangays	1,691,812.40	60	Parks Development & Administration Department	Engineering Department - Continuing Appropriation
16	23-00018	Proposed Development of Quezon City Nursery at Payatas Controlled Disposal Facility (Pangea)	Payatas	2,007,288.71	60	Parks Development & Administration Department	Engineering Department - Continuing Appropriation
17	23-00019	Proposed Improvement of GSIS Subdivision Tennis Court	Bahay Toro	2,697,046.74	60	Parks Development & Administration Department	Engineering Department
18	23-00020	Proposed Fabrication and Installation of Plantbox Barriers along Commonwealth Avenue Bike Lane and Fabrication of Bike Racks on various locations at Commonwealth Avenue	Various Locations	3,991,599.03	120	Parks Development & Administration Department	Engineering Department - Continuing Appropriation
<b><u>Parks – Medium A</u></b>							
19	23-00021	Proposed Rehabilitation of Existing Toilets and Construction of Additional Toilets at Quezon Memorial Circle (QMC)	Central	74,825,466.17	360	Parks Development & Administration Department	Engineering Department
<b><u>Roads – Small B</u></b>							
20	23-00023	Proposed Rehabilitation of Drainage System and Surface Improvement at Lagro High School	Greater Lagro	7,266,848.06	90	Department of Engineering	OCM-20% Community Development Fund

21	23-00024	Proposed Rehabilitation of Road and Drainage at Kalamansanay Street	Veterans Village	8,885,056.48	90	Department of Engineering	OCM-20% Community Development Fund
22	23-00025	Proposed Rehabilitation of Road and Drainage at Barangay Road and Alleys	San Jose	9,911,124.89	180	Department of Engineering	OCM-20% Community Development Fund
23	23-00026	Proposed Rehabilitation of Road and Drainage at Topside Street, Various Alleys and Portion of Major Dizon Street (Libra Street to Topside Street)	Escopa 2 & Escopa 4	16,420,001.34	180	Department of Engineering	OCM-20% Community Development Fund
24	23-00027	Proposed Rehabilitation of Road and Drainage at Iceland Street	Fairview	17,867,308.44	90	Department of Engineering	OCM-20% Community Development Fund

1. The **QUEZON CITY LOCAL GOVERNMENT**, through *funding source of various years* intends to apply the sum stated above being the Approved Budget for the Contract (ABC) to payments under the contract *for the above stated Projects*. Bids received in excess of the ABC shall be automatically rejected at bid opening.
2. The **QUEZON CITY LOCAL GOVERNMENT** now invites bids for the above Procurement Project. Completion of the Works is required *as stated above*. Bidders should have completed a contract similar to the Project. The description of an eligible bidder is contained in the Bidding Documents, particularly, in Section II (Instructions to Bidders).
3. Bidding will be conducted through open competitive bidding procedures using non-discretionary “*pass/fail*” criterion as specified in the 2016 revised Implementing Rules and Regulations (IRR) of Republic Act (RA) No. 9184.
4. Interested bidders may obtain further information from **QUEZON CITY LOCAL GOVERNMENT – BAC Secretariat** and inspect the Bidding Documents at the address given below *weekdays from 8:00 am. – 5:00 p.m.*
5. A complete set of Bidding Documents may be acquired by interested bidders on **30 March 2023 (Thursday)** from given address and website/s below *and upon payment of a non-refundable fee for the Bidding Documents, pursuant to the latest Guidelines issued by the GPPB*. The Procuring Entity shall allow the bidder to present its proof of payment for the fees *presented in person*.

**STANDARD RATES:**

Approved Budget for the Contract	Maximum Cost of Bidding Documents (in Philippine Peso)
More than 500,000 up to 1 Million	1,000.00
More than 1 Million up to 5 Million	5,000.00
More than 5 Million up to 10 Million	10,000.00
More than 10 Million up to 50 Million	25,000.00
More than 50 Million up to 500 Million	50,000.00
More than 500 Million	75,000.00

The following are the requirements for purchase of Bidding Documents;

1. PhilGEPS Registration Certificate (Platinum – 3 Pages)
2. Document Request List (DRL)
3. Authorization to purchase bidding documents
  - 3.1 Secretary’s Certificate (for corporation)
  - 3.2 Special Power of Attorney (for sole proprietorship)
4. Notarized Joint Venture Agreement (if applicable)
5. Letter of Intent

It must be duly received by the BAC Secretariat at 2<sup>nd</sup> Floor, Procurement Department, Finance Building, Quezon City Hall Compound.

6. The **QC- BAC- INFRASTRUCTURE & CONSULTANCY** will hold a Pre-Bid Conference<sup>1</sup> on **April 12, 2023 at 10:00 AM at 2<sup>nd</sup> Floor, Procurement Department-Bidding Room, Finance Building, Quezon City Hall Compound** or we encourage the prospective bidders to join through our **Virtual Conference (ZOOM APP)** which shall be open to prospective bidders.

**Virtual Conference (ZOOM APP)**

**Meeting ID: 854 9489 0133**

**Password: 273320**

7. Bids must be duly received by the BAC Secretariat through manual submission at the office address as indicated below, on or before **April 26, 2023 – 9:00 AM**. Late bids shall not be accepted.
8. All bids must be accompanied by a bid security in any of the acceptable forms and in the amount stated in **ITB Clause 16**,
9. Bid opening shall be on **April 26, 2023 - 10:00 AM at 2<sup>nd</sup> Floor, Procurement Department-Bidding Room, Finance Building, Quezon City Hall Compound** and/or via Zoom. Bids will be opened in the presence of the bidders' representatives who choose to attend the activity.

**Virtual Conference (ZOOM APP)**

**Meeting ID: 810 3646 5257**

**Password: 201522**

10. The **Quezon City Local Government** reserves the right to reject any and all bids, declare a failure of bidding, or not award the contract at any time prior to contract award in accordance with Sections 35.6 and 41 of the 2016 revised Implementing Rules and Regulations (IRR) of RA No. 9184, without thereby incurring any liability to the affected bidder or bidders.
11. For further information, please refer to:

**ATTY. DOMINIC B. GARCIA**

OIC, Procurement Department

2<sup>nd</sup> Floor, Procurement Department,

Finance Building, Quezon City Hall Compound

Elliptical Road, Barangay Central Diliman, Quezon City.

Tel. No. (02)8988-4242 loc. 8506/8710

Email Add: [bacinfra.procurement@quezoncity.gov.ph](mailto:bacinfra.procurement@quezoncity.gov.ph)

Website: [www.quezoncity.gov.ph](http://www.quezoncity.gov.ph)

12. You may visit the following websites:

For downloading of Bidding Documents: <https://quezoncity.gov.ph/public-notice/procurement/>

By:



**ARCH. LUCILLE H. CHUA, fuap, piep**  
Chairperson, BAC-Infra and Consultancy

<sup>1</sup> May be deleted in case the ABC is less than One Million Pesos (PhP1,000,000) where the Procuring Entity may not hold a pre-bid conference.

## ***Section II. Instructions to Bidders***

### **Notes on the Instructions to Bidders**

This Section on the Instruction to Bidders (ITB) provides the information necessary for bidders to prepare responsive bids, in accordance with the requirements of the Procuring Entity. It also provides information on bid submission, eligibility check, opening and evaluation of bids, post-qualification, and on the award of contract.

## 1. Scope of Bid

The Procuring Entity, **Quezon City Government** invites Bids for the **PROPOSED REHABILITATION OF GABALDON BUILDING AND GROUND IMPROVEMENT AT QUEZON CITY HIGH SCHOOL**, with Project Identification Number **23-00009**.

*[Note: The Project Identification Number is assigned by the Procuring Entity based on its own coding scheme and is not the same as the PhilGEPS reference number, which is generated after the posting of the bid opportunity on the PhilGEPS website.]*

The Procurement Project (referred to herein as “Project”) is for the construction of Works, as described in Section VI (Specifications).

## 2. Funding Information

2.1. The GOP through the source of funding as indicated below for **2023** in the amount of **Eleven Million Two Hundred Ninety-Eight Thousand Three Pesos and 60/100 Cts. (P 11,298,003.60)**.

2.2. The source of funding is:

a. LGUs, the Annual or Supplemental Budget, as approved by the Sanggunian.

## 3. Bidding Requirements

The Bidding for the Project shall be governed by all the provisions of RA No. 9184 and its 2016 revised IRR, including its Generic Procurement Manual and associated policies, rules and regulations as the primary source thereof, while the herein clauses shall serve as the secondary source thereof.

Any amendments made to the IRR and other GPPB issuances shall be applicable only to the ongoing posting, advertisement, or invitation to bid by the BAC through the issuance of a supplemental or bid bulletin.

The Bidder, by the act of submitting its Bid, shall be deemed to have inspected the site, determined the general characteristics of the contracted Works and the conditions for this Project, such as the location and the nature of the work; (b) climatic conditions; (c) transportation facilities; (c) nature and condition of the terrain, geological conditions at the site communication facilities, requirements, location and availability of construction aggregates and other materials, labor, water, electric power and access roads; and (d) other factors that may affect the cost, duration and execution or implementation of the contract, project, or work and examine all instructions, forms, terms, and project requirements in the Bidding Documents.

## 4. Corrupt, Fraudulent, Collusive, Coercive, and Obstructive Practices

The Procuring Entity, as well as the Bidders and Contractors, shall observe the highest standard of ethics during the procurement and execution of the contract. They or



through an agent shall not engage in corrupt, fraudulent, collusive, coercive, and obstructive practices defined under Annex “I” of the 2016 revised IRR of RA No. 9184 or other integrity violations in competing for the Project.

## **5. Eligible Bidders**

- 5.1. Only Bids of Bidders found to be legally, technically, and financially capable will be evaluated.
- 5.2. The Bidder must have an experience of having completed a Single Largest Completed Contract (SLCC) that is similar to this Project, equivalent to at least fifty percent (50%) of the ABC adjusted, if necessary, by the Bidder to current prices using the PSA’s CPI, except under conditions provided for in Section 23.4.2.4 of the 2016 revised IRR of RA No. 9184.

A contract is considered to be “similar” to the contract to be bid if it has the major categories of work stated in the **BDS**.

- 5.3. For Foreign-funded Procurement, the Procuring Entity and the foreign government/foreign or international financing institution may agree on another track record requirement, as specified in the Bidding Document prepared for this purpose.
- 5.4. The Bidders shall comply with the eligibility criteria under Section 23.4.2 of the 2016 IRR of RA No. 9184.

## **6. Origin of Associated Goods**

There is no restriction on the origin of Goods other than those prohibited by a decision of the UN Security Council taken under Chapter VII of the Charter of the UN.

## **7. Subcontracts**

- 7.1. The Bidder may subcontract portions of the Project to the extent allowed by the Procuring Entity as stated herein, but in no case more than fifty percent (50%) of the Project.

The Procuring Entity has prescribed that:

### **a. Subcontracting is not allowed.**

- 7.1. *[If Procuring Entity has determined that subcontracting is allowed during the bidding , state:]* The Bidder must submit together with its Bid the documentary requirements of the subcontractor(s) complying with the eligibility criterial stated in **ITB** Clause 5 in accordance with Section 23.4 of the 2016 revised IRR of RA No. 9184 pursuant to Section 23.1 thereof.
- 7.2. *[If subcontracting is allowed during the contract implementation stage, state:]* The Supplier may identify its subcontractor during the contract implementation stage. Subcontractors identified during the bidding may be changed during the



implementation of this Contract. Subcontractors must submit the documentary requirements under Section 23.1 of the 2016 revised IRR of RA No. 9184 and comply with the eligibility criteria specified in **ITB** Clause 5 to the implementing or end-user unit.

- 7.3. Subcontracting of any portion of the Project does not relieve the Contractor of any liability or obligation under the Contract. The Supplier will be responsible for the acts, defaults, and negligence of any subcontractor, its agents, servants, or workmen as fully as if these were the Contractor's own acts, defaults, or negligence, or those of its agents, servants, or workmen.

## **8. Pre-Bid Conference**

The Procuring Entity will hold a pre-bid conference for this Project on the specified date and time and either at its physical address on **April 12, 2023, 10:00 A.M. at 2nd Floor, Procurement Department-Bidding Room, Finance Building, Quezon City Hall Compound** and/or we encourage the prospective bidders to join through our **Virtual Conference (ZOOM APP) Meeting ID: 854 9489 0133 Password: 273320**

## **9. Clarification and Amendment of Bidding Documents**

Prospective bidders may request for clarification on and/or interpretation of any part of the Bidding Documents. Such requests must be in writing and received by the Procuring Entity, either at its given address or through electronic mail indicated in the **IB**, at least ten (10) calendar days before the deadline set for the submission and receipt of Bids.

## **10. Documents Comprising the Bid: Eligibility and Technical Components**

- 10.1. The first envelope shall contain the eligibility and technical documents of the Bid as specified in **Section IX. Checklist of Technical and Financial Documents**.
- 10.2. If the eligibility requirements or statements, the bids, and all other documents for submission to the BAC are in foreign language other than English, it must be accompanied by a translation in English, which shall be authenticated by the appropriate Philippine foreign service establishment, post, or the equivalent office having jurisdiction over the foreign bidder's affairs in the Philippines. For Contracting Parties to the Apostille Convention, only the translated documents shall be authenticated through an apostille pursuant to GPPB Resolution No. 13-2019 dated 23 May 2019. The English translation shall govern, for purposes of interpretation of the bid.
- 10.3. A valid PCAB License is required, and in case of joint ventures, a valid special PCAB License, and registration for the type and cost of the contract for this Project. Any additional type of Contractor license or permit shall be indicated in the **BDS**.

- 10.4. A List of Contractor's key personnel (e.g., Project Manager, Project Engineers, Materials Engineers, and Foremen) assigned to the contract to be bid, with their complete qualification and experience data shall be provided. These key personnel must meet the required minimum years of experience set in the **BDS**.
- 10.5. A List of Contractor's major equipment units, which are owned, leased, and/or under purchase agreements, supported by proof of ownership, certification of availability of equipment from the equipment lessor/vendor for the duration of the project, as the case may be, must meet the minimum requirements for the contract set in the **BDS**.

## **11. Documents Comprising the Bid: Financial Component**

- 11.1. The second bid envelope shall contain the financial documents for the Bid as specified in **Section IX. Checklist of Technical and Financial Documents**.
- 11.2. Any bid exceeding the ABC indicated in paragraph 1 of the **IB** shall not be accepted.
- 11.3. For Foreign-funded procurement, a ceiling may be applied to bid prices provided the conditions are met under Section 31.2 of the 2016 revised IRR of RA No. 9184.

## **12. Alternative Bids**

Bidders shall submit offers that comply with the requirements of the Bidding Documents, including the basic technical design as indicated in the drawings and specifications. Unless there is a value engineering clause in the **BDS**, alternative Bids shall not be accepted.

## **13. Bid Prices**

All bid prices for the given scope of work in the Project as awarded shall be considered as fixed prices, and therefore not subject to price escalation during contract implementation, except under extraordinary circumstances as determined by the NEDA and approved by the GPPB pursuant to the revised Guidelines for Contract Price Escalation guidelines.

## **14. Bid and Payment Currencies**

- 14.1. Bid prices may be quoted in the local currency or tradeable currency accepted by the BSP at the discretion of the Bidder. However, for purposes of bid evaluation, Bids denominated in foreign currencies shall be converted to Philippine currency based on the exchange rate as published in the BSP reference rate bulletin on the day of the bid opening.
- 14.2. *Payment of the contract price shall be made in:*
  - a. Philippine Pesos.

## **15. Bid Security**

- 15.1. The Bidder shall submit a Bid Securing Declaration or any form of Bid Security in the amount indicated in the **BDS**, which shall be not less than the percentage of the ABC in accordance with the schedule in the **BDS**.
- 15.2. The Bid and bid security **in no case shall exceed One Hundred Twenty (120) calendar days from the date of opening of bids, unless duly extended by the bidder upon the request of the Head of the Procuring Entity (HoPE) of the Quezon City Local Government**. Any bid not accompanied by an acceptable bid security shall be rejected by the Procuring Entity as non-responsive.

## **16. Sealing and Marking of Bids**

Each Bidder shall submit one copy of the first and second components of its Bid.

The Procuring Entity may request additional hard copies and/or electronic copies of the Bid. However, failure of the Bidders to comply with the said request shall not be a ground for disqualification.

If the Procuring Entity allows the submission of bids through online submission to the given website or any other electronic means, the Bidder shall submit an electronic copy of its Bid, which must be digitally signed. An electronic copy that cannot be opened or is corrupted shall be considered non-responsive and, thus, automatically disqualified.

## **17. Deadline for Submission of Bids**

The Bidders shall submit on the specified date and time and either at its physical address or through online submission as indicated in paragraph **5** of the **IB**.

## **18. Opening and Preliminary Examination of Bids**

- 18.1. The BAC shall open the Bids in public at the time, on the date, and at the place specified in paragraph 9 of the **IB**. The Bidders' representatives who are present shall sign a register evidencing their attendance. In case videoconferencing, webcasting or other similar technologies will be used, attendance of participants shall likewise be recorded by the BAC Secretariat.

In case the Bids cannot be opened as scheduled due to justifiable reasons, the rescheduling requirements under Section 29 of the 2016 revised IRR of RA No. 9184 shall prevail.

- 18.2. The preliminary examination of Bids shall be governed by Section 30 of the 2016 revised IRR of RA No. 9184.

## **19. Detailed Evaluation and Comparison of Bids**

- 19.1. The Procuring Entity's BAC shall immediately conduct a detailed evaluation of all Bids rated "*passed*" using non-discretionary pass/fail criteria. The BAC shall consider the conditions in the evaluation of Bids under Section 32.2 of 2016 revised IRR of RA No. 9184.
- 19.2. If the Project allows partial bids, all Bids and combinations of Bids as indicated in the **BDS** shall be received by the same deadline and opened and evaluated simultaneously so as to determine the Bid or combination of Bids offering the lowest calculated cost to the Procuring Entity. Bid Security as required by **ITB** Clause 15 shall be submitted for each contract (lot) separately.
- 19.3. In all cases, the NFCC computation pursuant to Section 23.4.2.6 of the 2016 revised IRR of RA No. 9184 must be sufficient for the total of the ABCs for all the lots participated in by the prospective Bidder.

## **20. Post Qualification**

Within a non-extendible period of five (5) calendar days from receipt by the Bidder of the notice from the BAC that it submitted the Lowest Calculated Bid, the Bidder shall submit its latest income and business tax returns filed and paid through the BIR Electronic Filing and Payment System (eFPS), and other appropriate licenses and permits required by law and stated in the **BDS**.

## **21. Signing of the Contract**

The documents required in Section 37.2 of the 2016 revised IRR of RA No. 9184 shall form part of the Contract. Additional Contract documents are indicated in the **BDS**.

## ***Section III. Bid Data Sheet***

### **Notes on the Bid Data Sheet (BDS)**

The Bid Data Sheet (BDS) consists of provisions that supplement, amend, or specify in detail, information, or requirements included in the ITB found in Section II, which are specific to each procurement.

This Section is intended to assist the Procuring Entity in providing the specific information in relation to corresponding clauses in the ITB and has to be prepared for each specific procurement.

The Procuring Entity should specify in the BDS information and requirements specific to the circumstances of the Procuring Entity, the processing of the procurement, and the bid evaluation criteria that will apply to the Bids. In preparing the BDS, the following aspects should be checked:

- a. Information that specifies and complements provisions of the ITB must be incorporated.
- b. Amendments and/or supplements, if any, to provisions of the ITB as necessitated by the circumstances of the specific procurement, must also be incorporated.

# Bid Data Sheet

ITB Clause																																					
5.2	For this purpose, similar contracts shall refer to contracts which have the same major categories of work.																																				
7.1	<b>Subcontracting is not allowed.</b>																																				
10.3	<i>No additional contractor license or permit is required</i>  <i>In addition, eligible bidders shall qualify or comply with the following:</i>  1. Bidders with valid Philippine Contractors Accreditation Board (PCAB)  Type  <b>Building - Small B</b>																																				
10.4	<table><tr><td colspan="4">The minimum work experience requirements for key personnel are the following:</td></tr><tr><td>Qty.</td><td>Key Personnel</td><td>General Experience</td><td>Relevant Experience</td></tr><tr><td>1</td><td>Project Engineer</td><td>3 years</td><td>3 years</td></tr><tr><td>1</td><td>General Foreman</td><td>3 years</td><td>3 years</td></tr><tr><td>1</td><td>Trade Engineer/Leadman for civil works</td><td>3 years</td><td>3 years</td></tr><tr><td>1</td><td>Trade Engineer/Leadman for electrical works</td><td>3 years</td><td>3 years</td></tr><tr><td>as needed</td><td>Safety Officer</td><td>3 years</td><td>3 years</td></tr><tr><td>1</td><td>DPWH duly accredited Materials Engineer</td><td>3 years</td><td>3 years</td></tr><tr><td colspan="4"><i>In addition, the bidder must execute an affidavit of undertaking duly notarized stating that the foregoing personnel shall perform work exclusively for the project until its completion. Please see attached bid forms.</i></td></tr></table>	The minimum work experience requirements for key personnel are the following:				Qty.	Key Personnel	General Experience	Relevant Experience	1	Project Engineer	3 years	3 years	1	General Foreman	3 years	3 years	1	Trade Engineer/Leadman for civil works	3 years	3 years	1	Trade Engineer/Leadman for electrical works	3 years	3 years	as needed	Safety Officer	3 years	3 years	1	DPWH duly accredited Materials Engineer	3 years	3 years	<i>In addition, the bidder must execute an affidavit of undertaking duly notarized stating that the foregoing personnel shall perform work exclusively for the project until its completion. Please see attached bid forms.</i>			
The minimum work experience requirements for key personnel are the following:																																					
Qty.	Key Personnel	General Experience	Relevant Experience																																		
1	Project Engineer	3 years	3 years																																		
1	General Foreman	3 years	3 years																																		
1	Trade Engineer/Leadman for civil works	3 years	3 years																																		
1	Trade Engineer/Leadman for electrical works	3 years	3 years																																		
as needed	Safety Officer	3 years	3 years																																		
1	DPWH duly accredited Materials Engineer	3 years	3 years																																		
<i>In addition, the bidder must execute an affidavit of undertaking duly notarized stating that the foregoing personnel shall perform work exclusively for the project until its completion. Please see attached bid forms.</i>																																					
10.5	<table><tr><td colspan="3">The minimum major equipment requirements are the following:</td></tr><tr><td>Equipment</td><td>Capacity</td><td>Number of Units</td></tr><tr><td>Dumptruck</td><td></td><td>1</td></tr><tr><td>Backhoe with Concrete Breaker</td><td></td><td>1</td></tr><tr><td>Jackhammer</td><td></td><td>1</td></tr><tr><td>Payloader</td><td></td><td>1</td></tr><tr><td>Motorized Road Grader</td><td></td><td>1</td></tr><tr><td>Vibratory Roller</td><td></td><td>1</td></tr></table>	The minimum major equipment requirements are the following:			Equipment	Capacity	Number of Units	Dumptruck		1	Backhoe with Concrete Breaker		1	Jackhammer		1	Payloader		1	Motorized Road Grader		1	Vibratory Roller		1												
The minimum major equipment requirements are the following:																																					
Equipment	Capacity	Number of Units																																			
Dumptruck		1																																			
Backhoe with Concrete Breaker		1																																			
Jackhammer		1																																			
Payloader		1																																			
Motorized Road Grader		1																																			
Vibratory Roller		1																																			

	Concrete Vibrator	1
	Concrete Mixer (2-Bagger)	1
	Plate Compactor	1
	Bituminous Prime Coat Truck Sprayer	1
	Broom Truck	1
	Pneumatic Roller	1
	Truck Paver	1
	<i>In addition, the bidder must execute an affidavit of undertaking duly notarized stating that the foregoing equipment shall be used exclusively for the project until its completion. Please see attached bid forms.</i>	
12	<i>[Insert Value Engineering clause if allowed.]</i>	
15.1	<p>The bid security shall be in the form of a Bid Securing Declaration with project number, or any of the following forms and amounts:</p> <p>a) The amount of not less than Php 225,960.07 or equivalent to two percent (2%) of ABC if bid security is in cash, cashier's/manager's check, bank draft/guarantee or irrevocable letter of credit; or</p> <p>b) The amount of not less than Php 564,900.18 or equivalent to five percent (5%) of ABC if bid security is in Surety Bond.</p>	
19.2	<b>Partial bid is not allowed.</b> The infrastructure project is packaged in a single lot and the lot shall not be divided into sub-lots for the purpose of bidding, evaluation, and contract award.	
20	No additional requirement.	
21	<p><b>Additional Contract Documents relevant to the Project as required:</b></p> <p><b>1. Construction Schedule and S-curve,</b></p> <p><b>2. Manpower Schedule,</b></p> <p><b>3. Construction Methods,</b></p> <p><b>4. Equipment Utilization Schedule,</b></p> <p><b>5. PERT/CPM or other acceptable tools of project scheduling, shall be included in the submission of Technical Proposal.</b></p>	

## ***Section IV. General Conditions of Contract***

### **Notes on the General Conditions of Contract**

The General Conditions of Contract (GCC) in this Section, read in conjunction with the Special Conditions of Contract in Section V and other documents listed therein, should be a complete document expressing all the rights and obligations of the parties.

Matters governing performance of the Contractor, payments under the contract, or matters affecting the risks, rights, and obligations of the parties under the contract are included in the GCC and Special Conditions of Contract.

Any complementary information, which may be needed, shall be introduced only through the Special Conditions of Contract.



## **1. Scope of Contract**

This Contract shall include all such items, although not specifically mentioned, that can be reasonably inferred as being required for its completion as if such items were expressly mentioned herein. All the provisions of RA No. 9184 and its 2016 revised IRR, including the Generic Procurement Manual, and associated issuances, constitute the primary source for the terms and conditions of the Contract, and thus, applicable in contract implementation. Herein clauses shall serve as the secondary source for the terms and conditions of the Contract.

This is without prejudice to Sections 74.1 and 74.2 of the 2016 revised IRR of RA No. 9184 allowing the GPPB to amend the IRR, which shall be applied to all procurement activities, the advertisement, posting, or invitation of which were issued after the effectivity of the said amendment.

## **2. Sectional Completion of Works**

If sectional completion is specified in the **Special Conditions of Contract (SCC)**, references in the Conditions of Contract to the Works, the Completion Date, and the Intended Completion Date shall apply to any Section of the Works (other than references to the Completion Date and Intended Completion Date for the whole of the Works).

## **3. Possession of Site**

3.1 The Procuring Entity shall give possession of all or parts of the Site to the Contractor based on the schedule of delivery indicated in the **SCC**, which corresponds to the execution of the Works. If the Contractor suffers delay or incurs cost from failure on the part of the Procuring Entity to give possession in accordance with the terms of this clause, the Procuring Entity's Representative shall give the Contractor a Contract Time Extension and certify such sum as fair to cover the cost incurred, which sum shall be paid by Procuring Entity.

3.2 If possession of a portion is not given by the above date, the Procuring Entity will be deemed to have delayed the start of the relevant activities. The resulting adjustments in contract time to address such delay may be addressed through contract extension provided under Annex "E" of the 2016 revised IRR of RA No. 9184.

## **4. The Contractor's Obligations**

The Contractor shall employ the key personnel named in the Schedule of Key Personnel indicating their designation, in accordance with **ITB** Clause 10.3 and specified in the **BDS**, to carry out the supervision of the Works.

The Procuring Entity will approve any proposed replacement of key personnel only if their relevant qualifications and abilities are equal to or better than those of the personnel listed in the Schedule.

## **5. Performance Security**

- 5.1. Within ten (10) calendar days from receipt of the Notice of Award from the Procuring Entity but in no case later than the signing of the contract by both parties, the successful Bidder shall furnish the performance security in any of the forms prescribed in Section 39 of the 2016 revised IRR.
- 5.2. The Contractor, by entering into the Contract with the Procuring Entity, acknowledges the right of the Procuring Entity to institute action pursuant to RA No. 3688 against any subcontractor be they an individual, firm, partnership, corporation, or association supplying the Contractor with labor, materials and/or equipment for the performance of this Contract.

## **6. Site Investigation Reports**

The Contractor, in preparing the Bid, shall rely on any Site Investigation Reports referred to in the SCC supplemented by any information obtained by the Contractor.

## **7. Warranty**

- 7.1. In case the Contractor fails to undertake the repair works under Section 62.2.2 of the 2016 revised IRR, the Procuring Entity shall forfeit its performance security, subject its property(ies) to attachment or garnishment proceedings, and perpetually disqualify it from participating in any public bidding. All payables of the GOP in his favor shall be offset to recover the costs.
- 7.2. The warranty against Structural Defects/Failures, except that occasioned-on force majeure, shall cover the period from the date of issuance of the Certificate of Final Acceptance by the Procuring Entity. Specific duration of the warranty is found in the SCC.

## **8. Liability of the Contractor**

Subject to additional provisions, if any, set forth in the SCC, the Contractor's liability under this Contract shall be as provided by the laws of the Republic of the Philippines.

If the Contractor is a joint venture, all partners to the joint venture shall be jointly and severally liable to the Procuring Entity.

## **9. Termination for Other Causes**

Contract termination shall be initiated in case it is determined *prima facie* by the Procuring Entity that the Contractor has engaged, before, or during the implementation of the contract, in unlawful deeds and behaviors relative to contract acquisition and implementation, such as, but not limited to corrupt, fraudulent, collusive, coercive, and obstructive practices as stated in ITB Clause 4.

## **10. Dayworks**

Subject to the guidelines on Variation Order in Annex “E” of the 2016 revised IRR of RA No. 9184, and if applicable as indicated in the **SCC**, the Dayworks rates in the Contractor’s Bid shall be used for small additional amounts of work only when the Procuring Entity’s Representative has given written instructions in advance for additional work to be paid for in that way.

## **11. Program of Work**

- 11.1. The Contractor shall submit to the Procuring Entity’s Representative for approval the said Program of Work showing the general methods, arrangements, order, and timing for all the activities in the Works. The submissions of the Program of Work are indicated in the **SCC**.
- 11.2. The Contractor shall submit to the Procuring Entity’s Representative for approval an updated Program of Work at intervals no longer than the period stated in the **SCC**. If the Contractor does not submit an updated Program of Work within this period, the Procuring Entity’s Representative may withhold the amount stated in the **SCC** from the next payment certificate and continue to withhold this amount until the next payment after the date on which the overdue Program of Work has been submitted.

## **12. Instructions, Inspections and Audits**

The Contractor shall permit the GOP or the Procuring Entity to inspect the Contractor’s accounts and records relating to the performance of the Contractor and to have them audited by auditors of the GOP or the Procuring Entity, as may be required.

## **13. Advance Payment**

The Procuring Entity shall, upon a written request of the Contractor which shall be submitted as a Contract document, make an advance payment to the Contractor in an amount not exceeding fifteen percent (15%) of the total contract price, to be made in lump sum, or at the most two installments according to a schedule specified in the **SCC**, subject to the requirements in Annex “E” of the 2016 revised IRR of RA No. 9184.

## **14. Progress Payments**

The Contractor may submit a request for payment for Work accomplished. Such requests for payment shall be verified and certified by the Procuring Entity’s Representative/Project Engineer. Except as otherwise stipulated in the **SCC**, materials and equipment delivered on the site but not completely put in place shall not be included for payment.

## **15. Operating and Maintenance Manuals**

- 15.1. If required, the Contractor will provide “as built” Drawings and/or operating and maintenance manuals as specified in the **SCC**.

- 15.2. If the Contractor does not provide the Drawings and/or manuals by the dates stated above, or they do not receive the Procuring Entity's Representative's approval, the Procuring Entity's Representative may withhold the amount stated in the **SCC** from payments due to the Contractor.

## ***Section V. Special Conditions of Contract***

### **Notes on the Special Conditions of Contract**

Similar to the BDS, the clauses in this Section are intended to assist the Procuring Entity in providing contract-specific information in relation to corresponding clauses in the GCC found in Section IV.

The Special Conditions of Contract (SCC) complement the GCC, specifying contractual requirements linked to the special circumstances of the Procuring Entity, the Procuring Entity's country, the sector, and the Works procured. In preparing this Section, the following aspects should be checked:

- a. Information that complements provisions of the GCC must be incorporated.
- b. Amendments and/or supplements to provisions of the GCC as necessitated by the circumstances of the specific purchase, must also be incorporated.

However, no special condition which defeats or negates the general intent and purpose of the provisions of the GCC should be incorporated herein.

# Special Conditions of Contract

GCC Clause	
2	Completion of work shall be within 120 calendar days.
4.1	The Procuring Entity shall give possession of all parts of the Site to the Contractor upon receipt of the Notice to Proceed.
6	The site investigation reports are: <i>[list here the required site investigation reports.]</i>
7.2	<p><i>[Select one, delete the other.]</i></p> <p><i>[In case of permanent structures, such as buildings of types 4 and 5 as classified under the National Building Code of the Philippines and other structures made of steel, iron, or concrete which comply with relevant structural codes (e.g., DPWH Standard Specifications), such as, but not limited to, steel/concrete bridges, flyovers, aircraft movement areas, ports, dams, tunnels, filtration and treatment plants, sewerage systems, power plants, transmission and communication towers, railway system, and other similar permanent structures:]</i> Fifteen (15) years.</p> <p><i>[In case of semi-permanent structures, such as buildings of types 1, 2, and 3 as classified under the National Building Code of the Philippines, concrete/asphalt roads, concrete river control, drainage, irrigation lined canals, river landing, deep wells, rock causeway, pedestrian overpass, and other similar semi-permanent structures:]</i> Five (5) years.</p> <p><i>[In case of other structures, such as bailey and wooden bridges, shallow wells, spring developments, and other similar structures:]</i> Two (2) years.</p>
10	Dayworks are applicable at the rate shown in the Contractor's original Bid.
13	The amount of the advance payment is no more that fifteen percent (15%) of the Contract Price subject to approval by the HOPE and compliance with the conditions under RA 9184 and its IRR.
14	No further instructions.
15.1	<p>The date by which operating and maintenance manuals are required is <i>thirty (30) days</i></p> <p>The date by which "as built" drawings are required as part of final payment</p>
15.2	The amount to be withheld for failing to produce "as built" drawings and/or operating and maintenance manuals by the date required is ten (10%) percent of the contract price.

## ***Section VI. Specifications***

### **Notes on Specifications**

A set of precise and clear specifications is a prerequisite for Bidders to respond realistically and competitively to the requirements of the Procuring Entity without qualifying or conditioning their Bids. In the context of international competitive bidding, the specifications must be drafted to permit the widest possible competition and, at the same time, present a clear statement of the required standards of workmanship, materials, and performance of the goods and services to be procured. Only if this is done will the objectives of economy, efficiency, and fairness in procurement be realized, responsiveness of Bids be ensured, and the subsequent task of bid evaluation facilitated. The specifications should require that all goods and materials to be incorporated in the Works be new, unused, of the most recent or current models, and incorporate all recent improvements in design and materials unless provided otherwise in the Contract.

Samples of specifications from previous similar projects are useful in this respect. The use of metric units is mandatory. Most specifications are normally written specially by the Procuring Entity or its representative to suit the Works at hand. There is no standard set of Specifications for universal application in all sectors in all regions, but there are established principles and practices, which are reflected in these PBDs.

There are considerable advantages in standardizing General Specifications for repetitive Works in recognized public sectors, such as highways, ports, railways, urban housing, irrigation, and water supply, in the same country or region where similar conditions prevail. The General Specifications should cover all classes of workmanship, materials, and equipment commonly involved in construction, although not necessarily to be used in a particular Works Contract. Deletions or addenda should then adapt the General Specifications to the particular Works.

Care must be taken in drafting specifications to ensure that they are not restrictive. In the specification of standards for goods, materials, and workmanship, recognized international standards should be used as much as possible. Where other particular standards are used, whether national standards or other standards, the specifications should state that goods, materials, and workmanship that meet other authoritative standards, and which ensure substantially equal or higher quality than the standards mentioned, will also be acceptable. The following clause may be inserted in the SCC.

#### **Sample Clause: Equivalency of Standards and Codes**

Wherever reference is made in the Contract to specific standards and codes to be met by the goods and materials to be furnished, and work performed or tested, the provisions of the latest current edition or revision of the relevant standards and codes in effect shall apply, unless otherwise expressly stated in the Contract. Where such standards and codes are national, or relate to a particular country or region, other authoritative standards that ensure a substantially equal or higher quality than the standards and codes specified will be accepted

subject to the Procuring Entity's Representative's prior review and written consent. Differences between the standards specified and the proposed alternative standards shall be fully described in writing by the Contractor and submitted to the Procuring Entity's Representative at least twenty-eight (28) days prior to the date when the Contractor desires the Procuring Entity's Representative's consent. In the event the Procuring Entity's Representative determines that such proposed deviations do not ensure substantially equal or higher quality, the Contractor shall comply with the standards specified in the documents.

These notes are intended only as information for the Procuring Entity or the person drafting the Bidding Documents. They should not be included in the final Bidding Documents.





Republika ng Pilipinas  
Lungsod ng Quezon  
**CITY ENGINEERING DEPARTMENT**  
5<sup>TH</sup>, 6<sup>TH</sup>, 7<sup>TH</sup> Floors, QC Civic Center Building "B"  
Telephone Nos. 8988-4242 Local 8538



PROJECT TITLE .      **PROPOSED REHABILITATION OF GABALDON BUILDING AND GROUND IMPROVEMENT OF QUEZON CITY HIGH SCHOOL**

LOCATION -              **BARANGAY SACRED HEART, DISTRICT 4, QUEZON CITY**

### **TECHNICAL SPECIFICATIONS**

#### **GR      GENERAL REQUIREMENTS**

- A. Comply with the current and existing laws, ordinances and applicable codes, rules and regulations, and standards. Any works performed contrary to the existing laws, rules and regulations, ordinances and standards without notice shall bear all cost arising therefrom.
- B. Drawings, specifications, codes and standards are minimum requirements. Where requirements differ, the more stringent apply
- C. Should there be any change(s) in drawings or specifications, it is required to comply with the governing regulations, notify the Implementing agency.
- D. Photographs shall be taken as, when and where directed at intervals of not more than one month. The photographs shall be sufficient in number and location, to record the exact progress of the works. The photographs shall be retained and will become the property of the Government.
- E. Site verification / inspection shall be conducted to validate the scope of works. No extra compensation and extension of time shall be given due to negligence or inadvertence.
- F. The quality of materials shall be of the best grade of their respective kinds for the purpose. The work shall also be performed in the best and most capable manner in strict accordance with requirements of the plans and details. All materials not conforming to the requirements of these specifications shall be considered as defective.
- G. All equipment and installations shall meet or exceed minimum requirements of the standards and codes.
- H. Mobilization and Demobilization (if applicable)
  1. Mobilization shall include all activities and related costs for transportation of personnel, equipment, and operating supplies to the site; establishment of offices, buildings, and other necessary general facilities for the operations at the site.
  2. Demobilization shall include all activities and costs for transportation of personnel, equipment, and supplies not anymore required within the construction site including the disassembly, removal and site clean-up of offices and other facilities assembled on the site specifically for this contract.
- I. Execute work in strict accordance with the best practices of the trades in a thorough, substantial, workmanlike manner by competent workmen. Provide a competent, experienced, full-time supervisor who is authorized to make decisions on behalf of the Contractor.
- J. Temporary Facilities and Utilities
  1. All facilities shall be near the job site, where necessary and shall conform to the best standard for the required types.
  2. Temporary facilities shall be provided and maintained including sanitary facilities and first aid stations.

3. Temporary utilities shall be sufficiently provided until the completion of the project such as water, power and communication.
  4. Temporary enclosure shall be provided around the construction site with adequate guard lights, railings and proper signage.
  5. Temporary roadways shall be constructed and maintained to sustain loads to be carried on them during the entire construction period.
  6. Upon completion of the work, the temporary facilities shall be demolished, hauled-out and disposed properly.
- K. Adequate construction safety and health protection shall be provided at all times during the execution of work to both workers and property.
1. A fully-trained Medical Aide shall be employed permanently on the site who shall be engaged solely to medical duties.
  2. The medical room shall be provided with waterproofing; it could be a building or room designated and used exclusively for the purpose and have a floor area of at least 15 square meters and a glazed window area of at least 2 square meters.
  3. The location of the medical room and any other arrangements shall be made known to all employees by posting on prominent locations and suitable notices in the site.
  4. Additional safety precautions shall be provided in the event of a pandemic. Protocols set forth by the government shall be strictly followed.
  5. Construction safety shall consist of construction canopy and safety net.
- L. Necessary protections to the adjacent property shall be provided to avoid unforward incidents / accidents.
- M. Final cleaning of the work shall be employed prior to the final inspection for the certification of final acceptance. Final cleaning shall be applied on each surface or unit of work and shall be of condition expected for a building cleaning and maintenance program.

**SW SITE WORKS**

- A. All grades, lines, levels and dimensions shall be verified as indicated on the plans and details. Any discrepancies or inconsistencies shall be reported before commencing work.
- B. This Item shall consist of the removal wholly or in part, and satisfactory disposal of all buildings, fences, structures, old pavements, abandoned pipe lines, and any other obstructions which are not designated or permitted to remain, except for the obstructions to be removed and disposed of under other items in the Contract.

Removal and/or demolition of existing structures shall be done in accordance to safety procedures.

**ITEM 104 – REMOVAL OF EXISTING STRUCTURES**  
**DESCRIPTION**

This Item shall consist of the removal wholly or in part, and satisfactory disposal of all buildings, fences, structures, old pavements, abandoned pipe lines, and any other obstructions which are not designated or permitted to remain, except for the obstructions to be removed and disposed off under other items in the Contract. It shall also include the salvaging of designated materials and backfilling the resulting trenches, holes, and pits.

**ITEM 105 – ROADWAY EXCAVATION**  
**DESCRIPTION**

Roadway excavation will include excavation and grading for roadways, parking areas, intersections, approaches, slope rounding, benching, waterways and ditches; removal of unsuitable material from the roadbed and beneath embankment areas; and excavating selected material found in the roadway as ordered by the Engineer for specific use in the improvement.

**ITEM 106 – EXCAVATION FOR STRUCTURES**  
**DESCRIPTION**

This item shall consist of the necessary excavation for reinforced concrete pipes, lined canal, box culverts and other structures not otherwise provided for in the Specifications. Except as otherwise provided for pipe culverts, the backfilling of completed structures and the disposal of all excavated materials shall be in accordance with this specification and in reasonably close conformity with the Plans or as established by the Engineer-in-Charge. This item shall include necessary diverting of live streams, bailing, pumping, draining, sheeting, bracing, and the necessary construction of cribs and cofferdams, and furnishing the materials therefore, and the subsequent removal of cribs and cofferdams and the placing of all necessary backfill. It shall also include the furnishing and placing of approved foundation fill material to replace unsuitable material encountered below the foundation elevation of structures.

**ITEM SPL5 – TAPPING DRAINAGE**  
**DESCRIPTION**

This item shall consist of tapping of affected drainage systems of houses and other building structures within the road-right-of-way in conformity with the Standard Specifications for Public Works and Highways and on location as shown on the plans.

**MATERIAL REQUIREMENTS**

**JOINT MORTAR**

Joint mortar for concrete pipes shall consist of one-part, by volume of Portland Cement and two-parts of approved sand with water as necessary to obtain the required consistency. Mortar shall be used within 30 minutes after its preparation.

**PORTLAND CEMENT**

It shall conform to the applicable requirements of AASHTO M 85, Hydraulic Cement. Only Type I Portland Cement shall be used unless otherwise provided for in the Special Provisions. Different brands or the same brands from different mills shall not be mixed nor shall they be used alternately unless the mix is approved by the Engineer-in-charge. Cement which for any reason, has become partially set or which contains lumps of caked cement shall be rejected. Cement salvaged from the discarded or used bags shall not be used. Samples of cement shall be obtained in accordance with AASHTO T 127.

**FINE AGGREGATES**

It shall consist of natural sand, alone screenings or other inert materials with similar characteristics, or combinations thereof, having hard, strong and durable particles. Fine aggregate from different sources of supply shall not be mixed or stored in the same pile nor used alternately in the same class of concrete without the approval of the Engineer.

It shall not contain more than three (3) mass percent of material passing the 0.075 mm (No. 200 sieve) by washing nor more than one (1) mass percent each of clay lumps or shale. The use of beach sand will not be allowed without the approval of the Engineer.

If the fine aggregate is subjected to five (5) cycles of the sodium sulfate soundness test, the weighted loss shall not exceed 10 mass percent.

The fine aggregate shall be free from injurious amounts of organic impurities. If subjected to the colorimetric test for organic impurities and a color darker than the standard is produced, it shall be rejected. However, when tested for the effect of organic impurities on strength of mortar by AASHTO T 74, the fine aggregate may be used if the relative strength at 7 and 28 days is not less than 95 mass percent.

The fine aggregate shall be well-graded from coarse to fine and shall conform to Table 311.1

Table 311.1 – Grading Requirements for Fine Aggregate

Sieve Designation	Mass Percent Passing
9.5 mm (3/8 in.)	100
4.75 mm (No. 4)	95 – 100
2.36 mm (No. 8)	-
1.18 mm (No. 16)	45 – 80
0.600 mm (No. 30)	-
0.300 mm (No. 50)	5 – 30
0.150 mm (No. 100)	10

## CWS CIVIL / STRUCTURAL WORKS

### A. ROOFING WORKS

1. Corrugated galvanized iron (G.I.) sheets, including plain aluminum sheets for roofing accessories shall be cold-rolled meeting ASTM A-153 and with spelter coating of zinc of not less than 0.381 kg/sq.m. (1.25 ounce/sq.ft.) conforming to ASTM A-525 or pns 67:1985. Unless otherwise specified or shown on Plans, roofing sheets shall be gauge 26 (0.48mm thick) and provided in long span sizes to minimize end laps. Sheets shall weigh not less than 3.74 kg/sq.m. and shall be marked or stamped showing the gauge, size amount of zinc coating, brand and name of manufacturer. Test specimens shall stand being bent through 180 degrees flat on itself without fracture of the base metal and without flaking of the zinc coating.
2. Ridge/hip rolls, valleys, flashing and counter flashings, gutters and downspouts, whenever required, shall be fabricated from plain G.I. sheets. Ridge/hip rolls, flashings and counter flashings shall be gauge 26. Valleys, gutters and downspouts shall be gauge 24 unless otherwise specified on Plans. Wire basket strainers shall be galvanized, gauge 24.

Root ventilators, whenever required shall be fabricated from gauge 26 plain G.I. sheets and constructed to the dimensions and details shown on Plans.

3. The roofing shall be secured to the purlins with min. 2 ½" max. 3" long Tek screws. Provide all-purpose sealant under the fasteners. Ridge rolls, hip rolls and valleys to be used shall be those compatible with the Ga. 24 pre-painted G.I. rib-type roofing sheets. They shall lap the roofing sheets at least 250mm. The ridge rolls, hip rolls and valleys shall be riveted to the roofing sheets.
4. Polycarbonate roofing and sunbreakers shall be covered with 6mm thick Rib-type polycarbonate sheets as shown on the plans. The roofing shall be secured to the purlins with min. 2 ½" max. 3" long Tek screws. Provide all-purpose sealant under the fasteners. Ridge rolls, hip rolls and valleys to be used shall be those compatible with the 6mm thick solid polycarbonate sheets. They shall lap the roofing sheets at least 250mm. The ridge rolls, hip rolls and valleys shall be riveted to the roofing sheets.
5. All roofing sheets adjacent to concrete hollow block and other masonry walls such as property line firewalls, shall be provided with Gauge 26 pre-painted plain G.I. Flashing to extend to the top and over to the other side of the wall. All fasteners shall be placed at the top of the corrugations of the roofing sheets to prevent water from standing around the fasteners.
6. Provide 6mm thick thermal insulation with single-side aluminum foil prior to fastening of roofing sheets to serve as thermal protection.

## **B. METAL FABRICATION**

### **1. Materials:**

- a. Steel and iron. If not specified otherwise, use standard mill-finished structural steel shapes or bar iron in compliance with AISC Specifications for Design, Fabrication and Erection of Structural Steel for buildings.
- b. Bolts, Nuts, Studs and Rivets ASTM A 307 and A 325
- c. Screws, Fed. Spec FF-S-85, Fed. Spec FF-S-92, and Fed. Spec. FF-S-111.
- d. Metal Purlins. High grade galvanized steel with minimum tensile strength of 275 MPa, 1.4mm in thickness or approved equal.

### **2. Fabrication:**

By mechanics skilled in the trade and in accordance with the manufacturer's directions. Metalwork shall be fabricated to allow for expansion and contraction of materials. Provide welding and bracing of adequate strength and durability, with tight, flush joints, dressed smooth and clean. Complete with bolts and nuts

### **3. Metal Surfaces:**

Surfaces shall be clean and free from all scale, flake, rust and rust pitting; well-formed and finished to shape and size, with sharp lines, angle and smooth surface. Shearing and punching shall leave clean true lines and surfaces. Weld or rivet permanent connections. Weld and flush rivets shall be used and finished flush smooth on surfaces that will be exposed after installation. Do not use screws or bolts where they can be avoided; when used, heads shall be countersunk, screwed up tight and threads nicked to prevent loosening

### **4. Construction:**

Thickness of metals and details of assembly and supports shall give ample strength and stiffness for the minimum loads specified or indicated. Joints exposed to weather shall be formed to exclude water

### **5. Welding:**

Use welding electrode E70xx and perform welding, welding inspection and corrective welding in accordance with AWS D1.1. Weld in a manner to prevent permanent distortion of the connected parts. Weld continuously along the entire area of contact (except where tack welding is permitted. Do not tack weld exposed to connections) Grind smooth visible weld in finished installation.

## **ITEM 200 – AGGREGATE BASE COURSE DESCRIPTION**

This Item shall consist of furnishing, placing and compacting an aggregate base course on a prepared subgrade/subbase in accordance with this Specification and the lines, grades, thickness and typical cross-sections shown on the Plans or as established by the Engineer-In-charge.

## **MATERIAL REQUIREMENTS**

Aggregate for base course shall consist of hard, durable particles or fragments of crushed stone, crushed slag or crushed or natural gravel and filler of natural or crushed sand or other finely divided mineral matter. The composite material shall be free from vegetable matter and lumps or balls of clay, and shall be of such nature that it can be compacted readily to form a firm, stable base. In some areas where the conventional base course materials are scarce or non-available, the use of 40% weathered limestone blended with 60% crushed stones or gravel shall be allowed, provided that the blended materials meet the requirements of this Item. The base course material shall conform to Table 201.1, whichever is called for in the Bill of Quantities.

Table 201.1 – Grading Requirements

Sieve Designation		Mass Percent Passing	
Standard, mm	Alternate US Standard	Grading A	Grading B
50	2"	100	-
37.5	1 - 1/2"	-	100
25	1"	60 - 85	-
19	3/4"	-	60 - 85
12.5	1/2"	35 - 85	-
4.75	No. 4	20 - 50	30 - 55
0.425	No. 40	5 - 20 0 -	8 - 25 2
0.075	No. 200	12	- 14

The fraction passing the 0.075 mm (No. 200) sieve shall not be greater than 0.66 (two thirds) of the fraction passing the 0.425 mm (No. 40) sieve. The fraction passing the 0.425 mm (No. 40) sieve shall have a liquid limit not greater than 25 and plasticity index not greater than 6 as determined by AASHTO T 89 and T 90, respectively. The coarse portion, retained on a 2.00 mm (No. 10) sieve shall have a mass percent of wear not exceeding 50 by the Los Angeles Abrasion test determined by AASHTO T 96. The material passing the 19 mm (3/4 inch) sieve shall have a soaked CBR value of not less than 80% as determined by AASHTO T 193. The CBR value shall be obtained at the maximum dry density (MDD) as determined by AASHTO T 180, Method D. If filler, in addition to that naturally present, is necessary for meeting the grading requirements or for satisfactory bonding, it shall be uniformly blended with the base course material on the road or in a pug mill unless otherwise specified or approved. Filler shall be taken from sources approved by the Engineer, shall be free from hard lumps and shall not contain more than 15 percent of material retained on the 4.75 mm (No. 4) sieve.

**ITEM 302 - BITUMINOUS PRIME COAT**  
DESCRIPTION

This item shall consist of preparing and treating an aggregate base course with material in accordance with the Plans and Specifications, preparatory to the construction of a bituminous surface course.

## MATERIAL REQUIREMENTS

Bituminous material shall be either Rapid Curing (RC) or Medium Curing (MC) Cut-back Asphalt, whichever is called for in the Bill of Quantities. It shall conform to the requirements of Item 702, Bituminous Materials. The type and grade shall be specified in the Special Provisions.

**ITEM 310—BITUMINOUS CONCRETE SURFACE COURSE, HOT LAID**  
**DESCRIPTION**

This Item shall consist of constructing a bituminous concrete surface course composed of aggregates, mineral filler, and bituminous material mixed in a central plant, constructed and laid hot on the prepared base in accordance with this Specification and in conformity with lines, grades, thickness and typical cross-section shown on the Plans.

## MATERIAL REQUIREMENTS

## COMPOSITION AND QUALITY OF BITUMINOUS MIXTURE (Job-Mix Formula)

The bituminous mixture shall be composed of aggregate, mineral filler, hydrated lime, and bituminous material. At least three weeks prior to production, the Contractor shall submit in writing a job-mix formula for each mixture supported by laboratory test data along with samples and sources of the components and viscosity-temperature relationships information to the Engineer for testing and approval.

Each job-mix formula submitted shall propose definite single values for:

1. The percentage of aggregate passing each specified sieve size.
2. The percentage of bituminous material to be added.
3. The temperature of the mixture delivered on the road.
4. The kind and percentage of additive to be used.
5. The kind and percentage of mineral filler to be used.

After the job-mix is established, all mixture furnished for the project shall conform thereto within the following ranges of tolerances:

Passing No. 4 and larger sieves	±	7 percent
---------------------------------	---	-----------

Passing No. 8 to No. 100 sieves (inclusive)	±	4 percent
Passing No. 200 sieve	±	2 percent
Bituminous Material	±	0.4 percent
Temperature of Mixture	±	10 °C

Should a change in source of material be proposed or should a job-mix formula prove unsatisfactory, a new job-mix formula shall be submitted by the Contractor in writing and be approved by the Engineer prior to production. Approval of a new job mix formula may require laboratory testing and verification. The mixture shall have a minimum compressive strength of 1.4 MPa (200 psi). The mixture shall have a mass percent air voids with the range of 3 to 5. The mixture shall also have an index of retained strength of not less than

70 when tested by AASHTO T 165. For aggregates having maximum sizes over 25 mm (1 inch), AASHTO T 165 will be modified to use 150 mm x 150 mm (6 x 6 inches) cylindrical specimens. The 150 mm (6 inches) cylinders will be compacted by the procedures outlined in AASHTO T 167 modified to employ 10 repetitions of a molding load of 9.6 MPa (1400 psi), with no appreciable holding time after each application of the full load.

#### BITUMINOUS MATERIAL

It shall be Penetration Grade Asphalt Cement. Asphalt cement shall conform to the requirements of AASHTO M 226.

#### AGGREGATES

It shall be uniformly graded from coarse to fine. Target value for the intermediate sieve sizes shall be established within the limits shown in table 703.1. The contractor shall submit the proposed target value in writing to the Engineer-in-Charge for approval. The target gradation is subject to confirmation testing in accordance with section 307.2 before approval by the engineer. Any changes in the target gradation are subject to confirmation testing in accordance with section 307.2, unless otherwise approved in writing by the engineer. No target gradation adjustment will be permitted during the span of a lot.

TABLE 703.1 – Range of Gradation Target Values

Sieve Designation, mm	Mass percent passing square mesh sieves, AASHTO T 11 and T 27, exclusive of mineral filler
	Range:
25 (1")	100
19 (3/4")	100
4.75 (No. 4)	50 – 60
2.36 (No. 8)	38 – 48
0.075 (No. 200)	3 – 7
	The minimum for Sand Equivalent is 35

No intermediate size of aggregate shall be removed for other purposes without written consent of the engineer. If crushed gravel is used, not less than 50 mass percent of the material retained on the 4.75 mm (No. 4) sieve shall be particles having at least one fractured face. That portion of the composite material passing a 4.75 mm (No. 4) sieve shall have a sand equivalent of not less than 35, as determined by AASHTO T 176, Alternate Method No. 2. The aggregate shall show a durability index not less than 35 (coarse and fine) as determined by AASHTO T 210. The material shall be free of clay balls and adherent films of clay or other matter that would prevent thorough coating with the bituminous material.

#### MINERAL FILLER

Filler material for bituminous bases or pavements shall meet the requirements of AASHTO M 17, Mineral Filler for Bituminous Paving Mixtures.

Mineral filler shall be graded within the following limits.

Sieve	Maximum Percent Passing
0.600 mm (No. 30)	100
0.300 mm (No. 50)	95 – 100
0.075 mm (No. 200)	70 – 100

The mineral filler shall have a plasticity index not greater than 4. Plasticity index limits are not appropriate for hydraulic lime and cement.

#### HYDRATED LIME

Hydrated lime shall conform to the requirements of PHILSA I-1-6B or ASTM C 207-7B and shall be of the following type:

- |         |   |  |
|---------|---|--|
| Type N  | - | Normal hydrated lime for masonry purposes.                 |
| Type S  | - | Special hydrated lime for masonry purposes.                |
| Type NA | - | Normal air-entraining hydrated lime for masonry purposes.  |
| Type SA | - | Special air-entraining hydrated lime for masonry purposes. |

Type N and S are suitable for use in mortar, in scratch and brown coats of cement plaster, for stucco and for addition to Portland Cement concrete. Type NA and SA are air-entrained hydrated limes that are suitable for use in any of the above uses where air-entrainment are desired. Type S and SA hydrated lime develop high, early plasticity and higher water retentivity and by a limitation on their unhydrated oxide content. It is the intent of this Specification to use either the Type N or S for soil stabilization and as filler requirement to bituminous plant mixtures. It is expected to provide pavements with greater resistance to the detrimental effects of water, especially flooding during the rainy season.

#### PROPORTIONING OF MIXTURES

The proportion of bituminous material on the basis of total dry aggregate shall be from 5.0 to 8.0 mass percent. The exact percentage to be used shall be fixed by the Engineer in accordance with the job-mix formula and the other quality control requirements. During the mixing operation, one-half to one (0.5 to 1.0) mass percent of hydrated lime, dry aggregate basis, shall be added to the mixture. The lower percentage limit is applicable to aggregates which are predominantly calcareous.

#### ITEM SPL 2 – CHB LINED CANAL

##### DESCRIPTION

This item shall consist of construction of lined canal in accordance with the Standard Specification for Public Works and Highways and in reasonably close conformity with the lines and grades shown on the plans or as established by the Engineer-in-Charge.

##### MATERIAL REQUIREMENTS

Concrete for these structures shall meet the requirements of Item 405, Structural Concrete. Other materials shall meet the following specifications:

#### CORRUGATED METAL UNITS

The units shall conform to Plan dimensions and the metal to AASHTO M 36. Bituminous coating, when specified, shall conform to ASTM D 1187, Asphalt-base Emulsion for use as Protective Coating for Metal.

Sewer and manhole brick (Made from clay or shale)	AASHTO M 91
Building brick (Solid masonry units made from clay or shale)	AASHTO M 114

#### JOINT MORTAR

Unless otherwise indicated on the Plans, joints mortar shall be composed of one part Portland Cement and two parts fine aggregate by volume to which hydrated lime has been added in an amount equal to 10 percent of the cement by weight. All materials for mortar shall meet the requirements of Item 405, Structural Concrete.

#### FRAMES, GRATINGS, COVERS AND LADDER RUNGS

Metal units shall conform to the plan dimensions and to the following specification requirements for the designated materials. Metal gratings and covers which are to rest on frames shall bear on them evenly. They shall be assembled before shipment and so marked that the same pieces may be reassembled readily in the same position when installed. Inaccuracy of bearings shall be corrected by machining, if necessary. A frame and a grating or cover to be used with it shall constitute one pair.

All castings shall be uniformly coated with asphalt-based emulsion meeting the requirements of ASTM D 1187, Asphalt-base Emulsion for use as Protective Coating for Metal. Samples of the material in casting shall be taken during the casting of the units and shall be separate casting poured from the same material as the casting they represent.



Gray iron casting	AASHTO M 105
Mild to medium-strength carbon steel castings for general application	AASHTO M 103
Structural steel	AASHTO M 183
Galvanizing, where specified for these units, shall conform to the requirements of	AASHTO M 111
Reinforcing Steel	AASHTO M 31

**PRE-CAST CONCRETE UNITS**

These units shall be cast in substantial permanent steel forms. Structural concrete used shall attain a minimum 28-day compressive strength of 20 682 MPa (3000 psi). The pre-cast units shall be cured in accordance with AASHTO M 171. Water absorption of individual cores taken from such units shall not exceed 7 percent. Additional reinforcement shall be provided as necessary to provide for handling of the pre-cast units. A sufficient number of cylinders shall be cast from the concrete for each unit permit compression tests at 7, 14 and 28 days, and to allow for at least 3 cylinders for each test. If the strength requirement is met at 7 or 14 days, the units shall be certified for use 14 days from the date of casting. If the strength is not met at 28 days, all units made from that batch or load will be rejected. Cracks in units, honeycombed or patched areas in excess of 2,000 square millimeters, excessive water absorption and failure to meet strength requirements shall be the causes for rejection. Pre-cast reinforced concrete manhole risers and tops shall conform to the requirements of AASHTO M 199. The plants will be inspected periodically for compliance with specified manufacturing methods, and material samples will be obtained for laboratory testing for compliance with material quality requirements. This may be the basis for acceptance of manufacturing lots as the quality. All materials shall be subjected to inspection for acceptance as to condition at the latest practicable time the Engineer has the opportunity to check for compliance prior to or during incorporation of materials into the work.

**ITEM SPL 21b STEEL GRATING  
DESCRIPTION**

This item shall consist of installation of steel barriers on locations as established by the Engineer-In-Charge in conformity with the Standard size, design, layout and dimension as shown in the Plans.

**MATERIAL REQUIREMENTS**

Based on the standard design approved by and material requirement of the implementing agency.

**AW ARCHITECTURAL WORKS****A. WALL FINISHES AND PARTITIONING**

1. **Ceramic Tiles.** Glazed tiles and trims shall have an impervious face of ceramic materials fused onto the body of the tiles and trims. The glazed surface may be clear white or colored depending on the color scheme approved by the Engineer. Standard glazes may be bright (glossy), semi-matte (less glossy), matte (dull) or crystalline (mottled and textured; good resistance to abrasion).

Tile work shall not be started until roughing-ins for sanitary/plumbing, electrical and other trades have been completed and tested. The work of all other trades shall be protected from damage.

2. **Cement Plaster Finish.** Mortar mixture for brown coat shall be freshly prepared and uniformly mixed in the proportion by volume of one part Portland cement, three (3) parts sand and one fourth (1/4) part hydrated lime.

Finish coat shall be pure Portland cement properly graded conforming to the requirements and mixed with water to approved consistency and plasticity.

3. **Double-Wall Fiber Cement Board Drywall on Metal Studs.** Wall panel shall be two (2) 8 mm thick fiber cement boards, properly cut and prepared for installation and shall conform to the requirements of the Plans.

**Metal Studs.** Wall framing shall consist of 0.6 mm thick aluminum metal studs and aluminum metal tracks.

**Fasteners and Connection detail.** All construction and connections shall be secured with rivets, screws and drive pins, and shall conform to local and standard codes. Connections shall also be secured with gypsum putty and gypsum tape.

**4. Toilet Partition.**

**B. CEILING FINISHES**

1. **Fiber Cement Board on Metal Frame.** The ceiling materials to be used shall conform to the samples approved by the City Engineer. All ceiling works shall be done by men experienced and qualified to do this particular specialty trade. The installation of ceiling materials shall be in accordance with the detailed section and with the manufacturer's manual instructions. Ceiling materials shall be cut as required to fit the perpendicular condition and should be properly secured by anchorage and other accessories to complete the installation. No mechanical work shall be exposed on the finish work. All joints around electrical outlets, pipes and other works extending through materials shall be sealed with caulking.
2. **Moisture-Resistant Gypsum Board on Metal Frame.** The ceiling materials to be used shall conform to the samples approved by the City Engineer. All ceiling works shall be done by men experienced and qualified to do this particular specialty trade. The installation of ceiling materials shall be in accordance with the detailed section and with the manufacturer's manual instructions. Ceiling materials shall be cut as required to fit the perpendicular condition and should be properly secured by anchorage and other accessories to complete the installation. No mechanical work shall be exposed on the finish work. All joints around electrical outlets, pipes and other works extending through materials shall be sealed with caulking.
3. **Gypsum Board on Metal Frame.** The ceiling materials to be used shall conform to the samples approved by the City Engineer. All ceiling works shall be done by men experienced and qualified to do this particular specialty trade. The installation of ceiling materials shall be in accordance with the detailed section and with the manufacturer's manual instructions. Ceiling materials shall be cut as required to fit the perpendicular condition and should be properly secured by anchorage and other accessories to complete the installation. No mechanical work shall be exposed on the finish work. All joints around electrical outlets, pipes and other works extending through materials shall be sealed with caulking.
4. **Acoustic Board Ceiling on T-Runner Frame.** The ceiling materials to be used shall conform to the samples approved by the City Engineer. All ceiling works shall be done by men experienced and qualified to do this particular specialty trade. The installation of ceiling materials shall be in accordance with the detailed section and with the manufacturer's manual instructions. Ceiling materials shall be cut as required to fit the perpendicular condition and should be properly secured by anchorage and other accessories to complete the installation. No mechanical work shall be exposed on the finish work. All joints around electrical outlets, pipes and other works extending through materials shall be sealed with caulking.

**6. Slab Soffit.**

**C. CARPENTRY WORKS**

Lumber of different species for the various parts of the structure shall be well-seasoned, sawn straight, sundried or kiln-dried and free from defects such as loose unsound knots, pitch pockets, sapwood, cracks and other imperfections impairing its strength, durability and appearance.

Rough lumber for framing and siding boards shall be air-dried or sundried such that its moisture content shall not exceed 22 percent. Dressed lumber for exterior and interior finishing, for doors and windows, millwork, cabinet work and flooring boards shall be kiln-dried and shall not have a moisture content in excess of 14 percent at the time of installation in the structure.

Plyboard shall be good grade and made of laminated wood strips of uniform width and thickness bounded together with water resistant resin glue. The laminated core shall be finished both faces with select grade Tangulle or red Lauan veneers not less than 2 mm

thick similarly bonded to the core. The plyboard of not less than 19 mm thick shall be free from defects such as split in veneer, buckling or warping.

Plywood shall conform to the requirements of the Philippine Trade Standards 631-02. Thickness of a single layer laminae shall not be less than 2 mm. The laminae shall be superimposed in layers with grains crossing at right angles in successive layers to produce stiffness. The face veneers shall be rotary cut from select grade timber. The laminae and face veneers shall be bonded with water resistant resin glue, hot pressed and pressure treated. Ordinary Tanguile or red Luan plywood with good quality face veneers, 8 mm thick shall be used for double walling and ceiling not exposed to moisture; waterproof or marine plywood shall be used for ceiling exposed to moisture such as at toilets and eaves, and ceiling to be finished with acrytex.

Glue shall be from water resistant resins which, upon hardening, shall not dissolve nor lose its bond or holding power even when soaked with water for extended period

Nails, screw, bolts, and straps shall be provided and used where suitable for fixing carpentry and joinery works. All fasteners shall be brand new and adequate size to ensure rigidity of connections.

1. Nails of adequate size shall be steel wire, diamond-pointed, ribbed shank and blight finish.
2. Screws of adequate size shall be aluminum or brass plated steel with slotted head.
3. Lag screws of adequate size, for anchoring heavy timber framing in concrete or masonry, shall be galvanized steel.
4. Bolts and nuts shall be of steel having a yield point of not less than 245 Mpa. Bolts shall have square heads and provided with standard flat steel washers and hexagonal nuts. Threads shall conform to American coarse thread series. Threaded portion shall be long enough so that the nut can be tightened against the bolted members without any need for blocking. The bolt's threaded end shall be finished smooth for ease of engaging and turning the nut.
5. Wrought iron straps or angles, when required in conjunction with bolts or lag screws to provide proper anchorage, shall be of the shape and size shown on the Plans.

#### **D. PAINTING WORKS**

1. **Paint Materials.** All types of paint material and other related products shall be subject to test as to material composition by the Bureau of Research and Standard, DPWH or the National Institute of Science and Technology.
2. **Tinting Colors.** Tinting colors shall be first grade quality pigment ground in alkylid resin that disperses and mixes easily with paint to produce the color desired. Use the same brand of paint and tinting color to effect good paint body.
3. **Skim coat.** Skim coat shall be fine powder type material like kalsomine that can be mixed into putty consistency, with oil-based primers and paints to fill minor surface dents and imperfections.
4. **Paint Schedule.**
  - a. **Exterior Masonry Wall (plain cement plastered finish to be painted)**
    - i. 1 coat skim coating, 1 coat primer, 2 coats elastomeric paint finish
  - b. **Interior Masonry Wall (plain cement plastered finish to be painted)**
    - i. 1 coat skim coating, 1 coat primer, 2 coats latex paint finish
  - c. **Interior Dry Wall**
    - i. 1 coat primer, 2 coats latex paint finish
  - d. **Ceiling Boards**

- i. 1 coat primer, 2 coats latex paint finish
  - e. Slab Soffit
    - i. 1 coat primer, 2 coats latex paint finish
  - f. Metal / Steel Surfaces
    - i. 1 coat primer, 2 coats epoxy enamel finish
5. Surface Preparation. All surfaces shall be in proper condition to receive the finish. Woodworks shall be hand-sanded smooth and dusted clean. All knot-holes, pitch pockets or sappy portions shall be sealed with natural wood filler. Nail holes, cracks or defects shall be carefully puttied after the first coat, matching the color of paint.
- Interior woodworks shall be sandpapered between coats. Cracks, holes or imperfections in plaster shall be filled with patching compound and smoothed off to match adjoining surfaces.
- Concrete and masonry surfaces shall be coated with concrete neutralizer and allowed to dry before any painting primer coat is applied. When surface is dried apply first coating. Hairline cracks and unevenness shall be patched and sealed with approved putty or patching compound. After all defects are corrected apply the finish coats as specified on the Plans (color scheme approved).
- Metal shall be clean, dry and free from mill scale and rust. Remove all grease and oil from surfaces. Wash, unprimed galvanized metal with etching solution and allow it to dry. Where required to prime coat surface with Red Lead Primer same shall be approved by the Engineer.
- In addition, the Contractor shall undertake the following:
- a. Voids, cracks, nick etc. will be repaired with proper patching material and finished flush with surrounding surfaces.
  - b. Marred or damaged shop coats on metal shall be spot primed with appropriate metal primer.
  - c. Painting and varnishing works shall not be commenced when it is too hot or cold.
  - d. Allow appropriate ventilation during application and drying period
  - e. All hardware will be fitted and removed or protected prior to painting and varnishing works.
6. Application. Paints when applied by brush shall become non-fluid, thick enough to lay down as adequate film of wet paint. Brush marks shall have flowed out after application of paint.
- Paints made for application by roller must be similar to brushing paint. It must be non-sticky when thinned to spraying viscosity so that it will break up easily into droplets.
- Paint is atomized by high pressure pumping rather than broken up by the large volume of air mixed with it. This procedure changes the required properties of the paint.
- 7. Application shall be as per paint Manufacturer's specification and recommendation.
  - 8. Provide all drop cloth and other covering requisite for protection of floors, walls, aluminum, glass, finishes and other works.
  - 9. All applications and methods used shall strictly follow the Manufacturer's Instructions and Specifications.
  - 10. All surfaces including masonry wall shall be thoroughly cleaned, puttied, sandpapered, rubbed and polished; masonry wall shall be treated with Neutralizer.

11. All exposed finish hardware, lighting fixtures and accessories, glass and the like shall be adequately protected so that these are not stained with paint and other painting materials prior to painting works.
12. All other surfaces endangered by stains and paint marks should be taped and covered with craft paper.

## **EW ELECTRICAL WORKS**

### **A. CONDUITS, BOXES AND FITTINGS**

1. This item shall consist of the furnishing and installation of the complete conduit work, consisting of electrical conduits; conduit boxes such as junction boxes, pull boxes, utility boxes, octagonal and square boxes; conduit fittings, such as couplings, locknuts and bushings and other electrical materials needed to complete the conduit roughing-in work of this project.
2. All materials shall be brand new and shall be of the approved type meeting all the requirements of the Philippine Electrical Code and bearing the Philippine Standard Agency (PSA) mark.
3. All works throughout shall be executed in the best practice in a workmanlike manner by qualified and experienced electricians under the immediate supervision of a duly licensed Electrical Engineer.
4. The work to be done under this division of specifications consists of the fabrication, furnishing, delivery and installation, complete in all details of the electrical work, at the subject premises and all work materials incidental to the proper completion of the installation, except those portions of the work which are expressly stated to be done by other fields. All works shall be done in accordance with the rules and regulations and with the specifications.
5. All lighting fixtures and lamps are as specified and listed on lighting fixture schedule.
6. All grounding system installation shall be executed in accordance with the approved plans. Grounding system shall include building perimeter ground wires, ground rods, clamps, connectors, ground wells and ground wire taps as shown in the approved design.
7. All auxiliary systems such as telephone and intercom system, time clock system, fire alarm system and public address/nurse's call/paging system installations shall be done in accordance with the approved design.
8. Upon completion of the electrical construction work, the contractor shall provide all test equipment and personnel and to submit written copies of all test results.
9. The contractor shall guarantee the electrical installation are done and in accordance with the approved plans and specifications. The contractor shall guarantee that the electrical systems are free from all grounds and from all defective workmanship and materials and will remain so for a period of one year from date and acceptance of works. Any defect shall be remedied by the Contractor at his own expense.

### **B. WIRES AND WIRING DEVICES**

1. This item shall consist of the furnishing and installation of all wires and wiring devices consisting of electric wires and cables, wall switches, convenience receptacles, heavy duty receptacles and other devices shown on the approved Plans but not mentioned in these specifications.
2. Wires and cables shall be of the approved type meeting all the requirements of the Philippine Electrical Code and bearing the Philippine Standard Agency (PSA) mark. Unless specified or indicated otherwise, all power and lighting conductors shall be

insulated for 600 volts. All wires shall be copper, soft drawn and annealed, smooth and of cylindrical form and shall be centrally located inside the insulation

3. Conductors or wires shall not be drawn in conduits until after the cement plaster is dry and the conduits are thoroughly cleaned and free from dirt and moisture. In drawing wires into conduits, sufficient slack shall be allowed to permit easy connections for fixtures, switches, receptacles and other wiring devices without the use of additional splices.
4. All conductors of convenience outlets and lighting branch circuit homeruns shall be wired with a minimum of 3.5 mm in size. Circuit homeruns to panelboards shall not be smaller than 3.5 mm but all homeruns to panelboard more than 30 meters shall not be smaller than 5.5 mm. No conductor shall be less than 2 mm in size.
5. All wires of 14mm and larger in size shall be connected to panels and apparatus by means of approved type lugs or connectors of the solderless type, sufficiently large enough to enclose all strands of the conductors and securely fastened. They shall not loosen under vibration or normal strain.
6. All joints, taps and splices on wires larger than 14 mm shall be made of suitable solderless connectors of the approved type and size. They shall be taped with rubber and PVC tapes providing insulation not less than that of the conductors.
7. No splices or joints shall be permitted in either feeder or branch conductors except within outlet boxes or accessible junction boxes or pull boxes. All joints in branch circuit wiring shall be made mechanically and electrically secured by approved splicing devices and taped with rubber and PVC tapes in a manner which will make their insulation as that of the conductor.
8. All wall switches and receptacles shall be fitted with standard Bakelite face plate covers. Device plates for flush mounting shall be installed with all four edges in continuous contact with finished wall surfaces without the use of coiled wire or similar devices. Plaster filling shall not be permitted. Plates installed in wet locations shall be gasketed.
9. When more than one switch or device is indicated in a single location, gang plate shall be used.

  
PETE ANDRE S. IMATONG  
Planning and Programming Division

  
JOCELYN A. NAONG  
Planning and Programming Division

## ***Section VII. Drawings***

*[Insert here a list of Drawings. The actual Drawings, including site plans, should be attached to this section, or annexed in a separate folder.]*



1	VICINITY MAP
---	--------------

SCALE INTS.



2	LOCATION MAP
---	--------------

SCALE NTR.



PROJECT TITLE:

PROPOSED REHABILITATION OF  
GABALDON BUILDING AND GROUND  
IMPROVEMENT OF QUEZON CITY  
HIGH SCHOOL

LOCATION  
BRGY. SACRED HEART, DISTRICT 4, CUSCOW CITY

Columbian 100

CATE: 00110.00

CHECKED BY: [signature]

© 2000 Blackwell Science Ltd

## WANT TO GET

ENGR. LEO S. DEL ROSARIO  
HUNT, PLANNING & PROGRAMMING DIVISION

RECOMMENDING AFFECTION.

ENGR. ISABAWN VERZOSA,  
DE. CITY ENGINEERING DEPARTMENT

APPROVED BY:

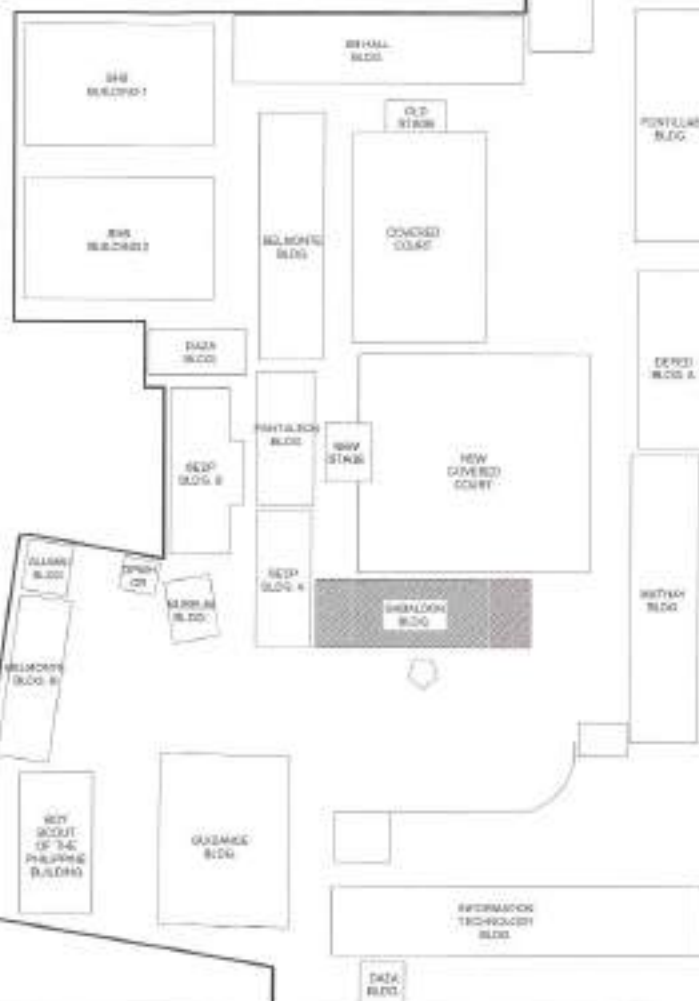
HON. M<sup>RS</sup>. JOSEFINA G. BELMONTE  
1111 MADISON

## SHEET CONTENT

MONEY MAP  
 LOCATION MAP  
 SITE DEVELOPMENT PLAN

SUBSET NO.

AR-01  
0114



SCOUT YBALDOLAZA STREET

## 3 SITE DEVELOPMENT PLAN

SCALE INTR.

## TABLE OF CONTENTS

## ARCHITECTURAL

AR-1	VICINITY MAP LOCATION PLAN SITE DEVELOPMENT PLAN
AR-2	FLOOR PLAN
AR-3	POOF PLAN
AR-4	FRONT ELEVATION REAR ELEVATION
AR-5	SECTION THRU 'W' SECTION THRU 'B'
AR-6	SCHEDULE OF DOORS AND WINDOWS STANDING CUMMIT DETAILS

## STRUCTURAL

ST-1	GENERAL NOTES
	TRUSS DETAILS
ST-2	ROOF FRAMING PLAN

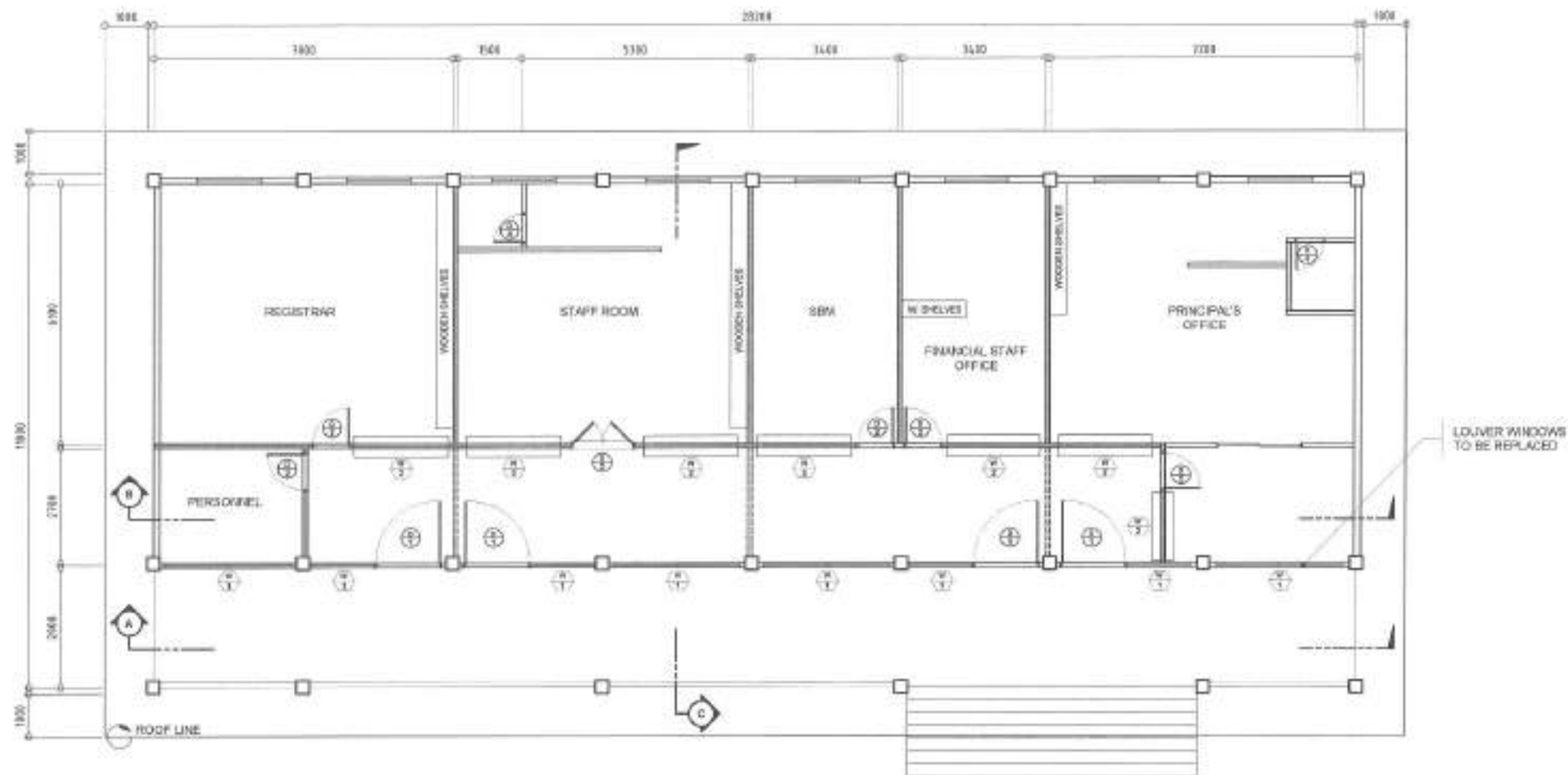
## ELECTRICAL

EL-1	GENERAL NOTES
	LEGENDS AND SYMBOLS
	MISCELLANEOUS DETAILS
EL-2	LOAD SCHEDULE
EL-3	LIGHTING LAYOUT
EL-4	POWER LAYOUT

## CIVIL WORKS

GM-1	STORM DRAINAGE PLAN
	ROADWORK PLAN
GM-2	ROADWAY CROSS SECTION
	TYPICAL DETAIL FOR 4 LAYER UNDED CANAL
	4 LAYER UNDED CANAL STEEL BRATING DET.
	SECTION A
	SECTION B
	SECTION C





## NOTE:

1. WHOLE STRUCTURE TO BE REPAINTED
2. DOORS AND LOUVER WINDOWS TO BE REPLACED
3. CEILING TO BE REPLACED WITH GYPSUM FIBER CEMENT BOARD INCLUDING METAL FRAMING
4. EXISTING DRY WALL TO BE REPLACED
5. PROVISION FOR STANDING CABINET

## LEGENDS AND SYMBOLS

- DRY WALL PARTITION (1500mm H)
- ▨ DRY WALL PARTITION (FLOOR TO CEILING)

## 1 FLOOR PLAN

SCALE 1:1000



Republika ng Pilipinas  
Lungsod ng Quezon  
CITY ENGINEERING DEPARTMENT

PROJECT TITLE:  
**PROPOSED REHABILITATION OF  
GABALDON BUILDING AND GROUND  
IMPROVEMENT OF QUEZON CITY  
HIGH SCHOOL**

LOCATION:  
BRGY. SACRED HEART, DISTRICT 4, QUEZON CITY

DRAWN BY: *[Signature]*

DATE: 08.18.22

CHECKED BY: *[Signature]*

REVISION NO.:

SUBMITTED BY: *[Signature]*

*[Signature]*  
ENGR. LEO S. DEL ROSARIO/  
HEAD, PLUMBING & WOODWORKING DIVISION

RECOMMENDING APPROVAL:

*[Signature]*  
ENGR. BANGSAR R. VERZORA, JR.  
DE. CITY ENGINEERING DEPARTMENT

APPROVED BY:

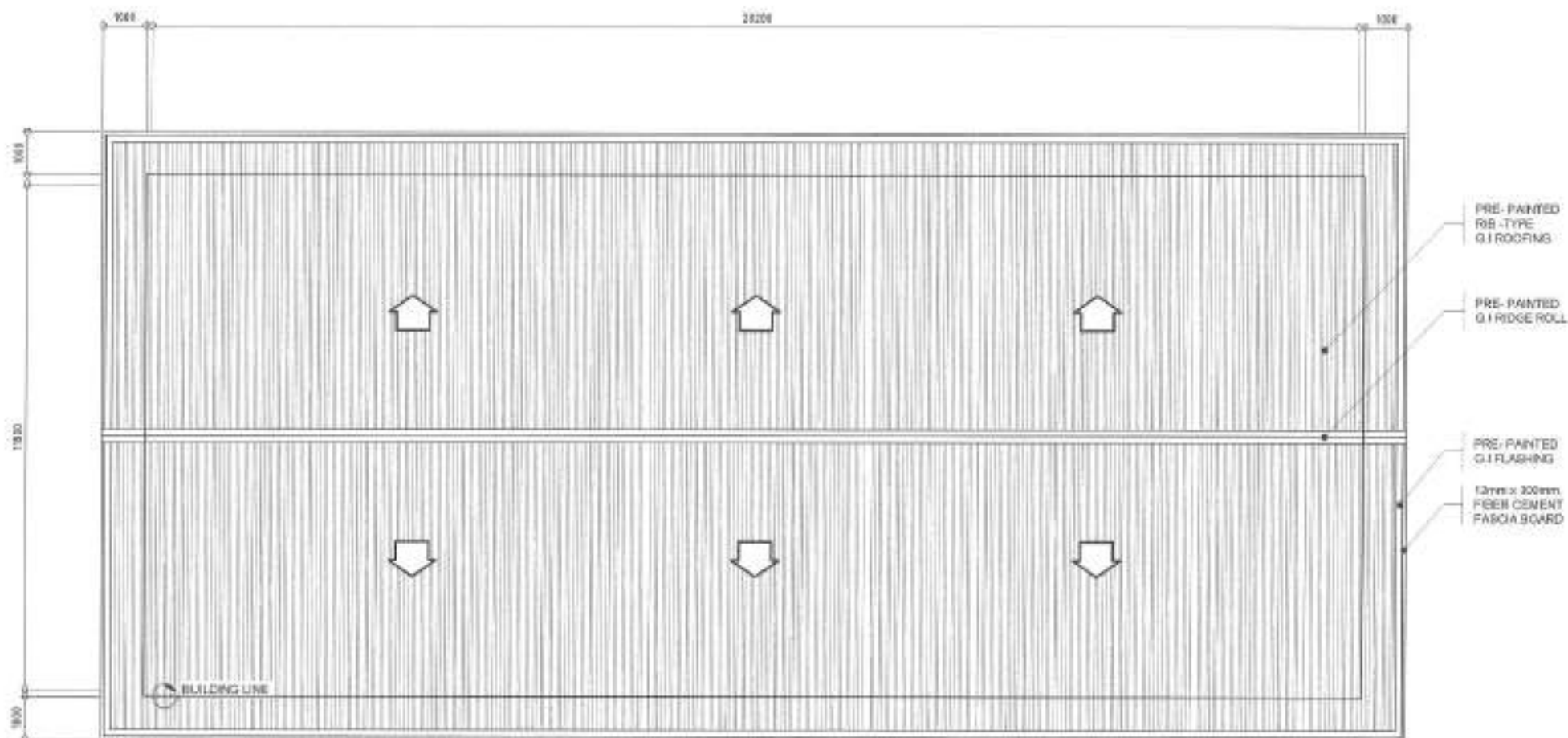
*[Signature]*  
HON. RA. JOSEFINA G. BELMONT  
CITY ENGINEER

SHEET CONTENT:

FLOOR PLAN

SHEET NO.:

AR-02  
02.14



# 1 ROOF PLAN

SCALE 1:100M.



Republika ng Pilipinas  
Lungsod ng Quezon  
CITY ENGINEERING DEPARTMENT

PROJECT TITLE:  
**PROPOSED REHABILITATION OF  
GASALDON BUILDING AND GROUND  
IMPROVEMENT OF QUEZON CITY  
HIGH SCHOOL**

LOCATION:  
BNGY. SACRED HEART, DISTRICT 4, QUEZON CITY

DRAWN BY: *[Signature]*  
DATE: 08.18.22  
CHECKED BY: *[Signature]*  
REVISION NO.:

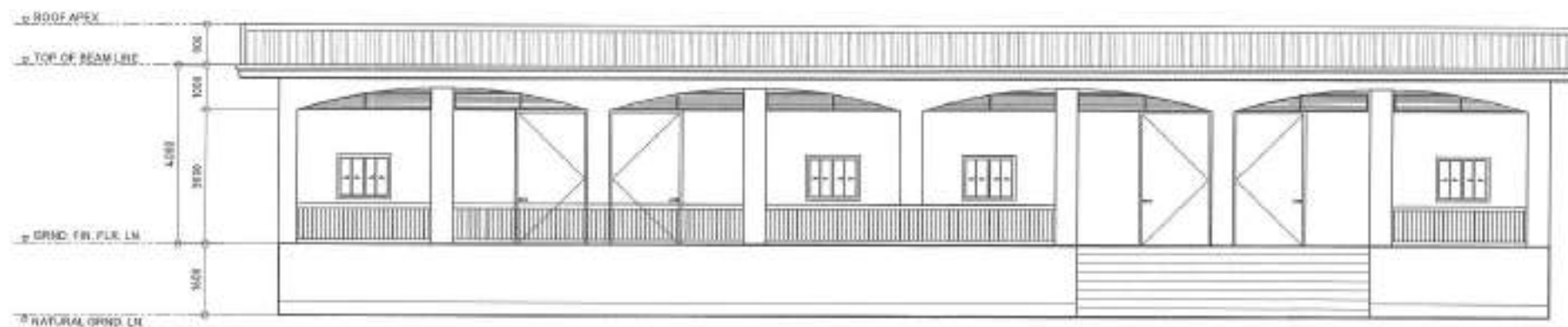
SUBMITTED BY: *[Signature]*  
ENGR. LEO S. DEL ROSARIO  
HEAD, PLANNING & PROGRAMMING DIVISION

RECOMMENDING APPROVAL:  
ENGR. EDGAR R. VERZOSA, JR.  
CH. CITY ENGINEERING DEPARTMENT

APPROVED BY:  
HON. MA. JOSEERRA G. BELMONTTE  
CITY MAYOR

SHEET CONTENT:  
ROOF PLAN

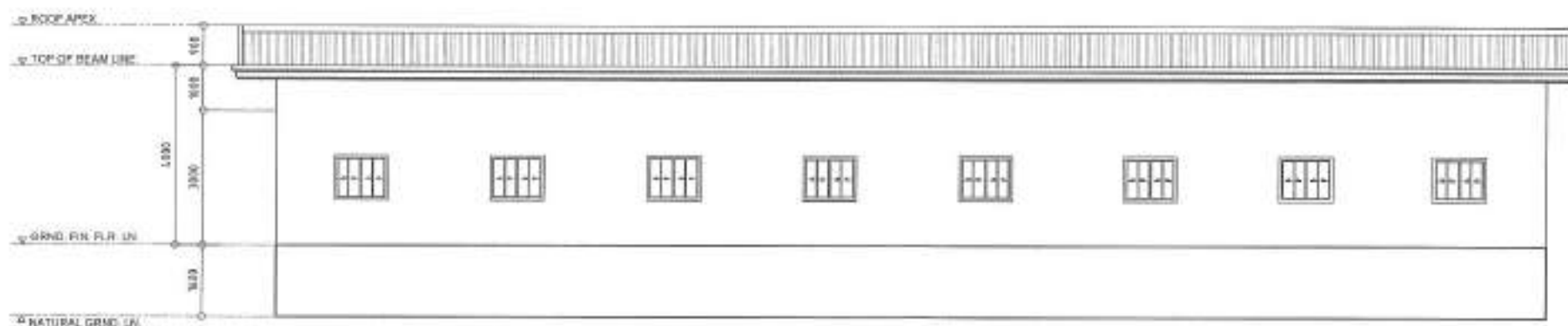
SHEET NO.:  
AR-03  
03/14



NOTE:  
1. WHOLE STRUCTURE TO BE REPAIRED

## 1 FRONT ELEVATION

SCALE 1:100M



NOTE:  
1. WHOLE STRUCTURE TO BE REPAIRED

## 2 REAR ELEVATION

SCALE 1:100M



Republika ng Pilipinas  
Lungsod ng Quezon  
CITY ENGINEERING DEPARTMENT

PROJECT TITLE:  
**PROPOSED REHABILITATION OF  
GABALDON BUILDING AND GROUND  
IMPROVEMENT OF QUEZON CITY  
HIGH SCHOOL**  
LOCATION:  
Bldg. SACRED HEART, DISTRICT 4, QUEZON CITY

DESIGNED BY:  
DATE: 08/10/22  
CHECKED BY:  
REVISION NO.:

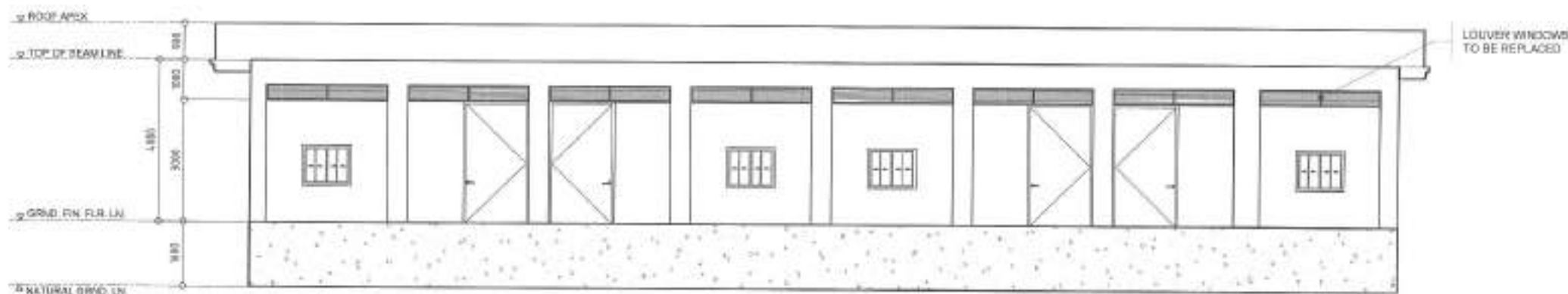
SUBMITTED BY:  
ENGR. LEO S. DEL ROSARIO  
HEAD, PLANNING & PROGRAM DEVELOPMENT

RECOMMENDING APPROVAL:  
ENGR. HENRY R. VERZOSA, JR.  
DE, CITY ENGINEERING DEPARTMENT

APPROVED BY:  
HON. MA. JOSEFINA G. BELMONTE  
CITY MAOR

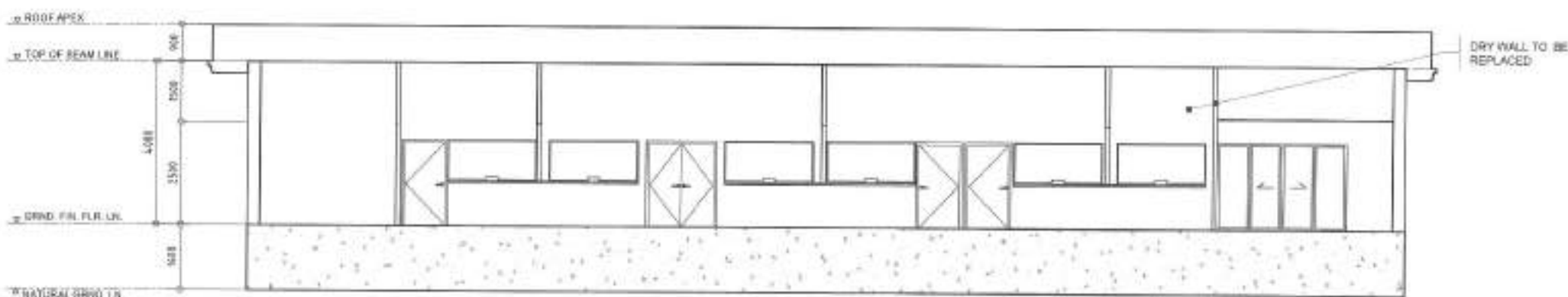
SHEET CONTENT:  
FRONT ELEVATION  
REAR ELEVATION

SHEET NO.:  
**AR-04**  
**04/14**



## 1 SECTION THRU "A"

SCALE 1:100M



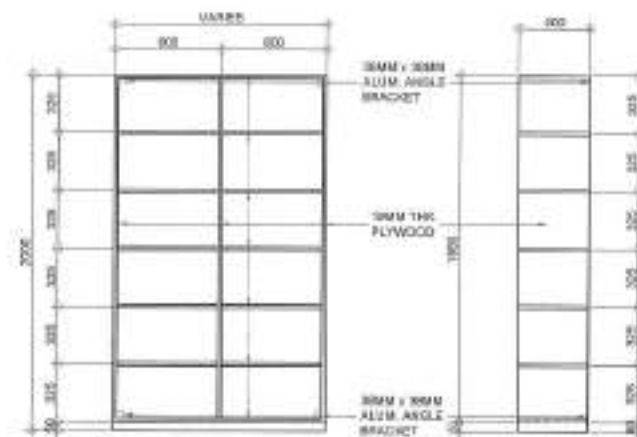
## 2 SECTION THRU "B"

SCALE 1:100M



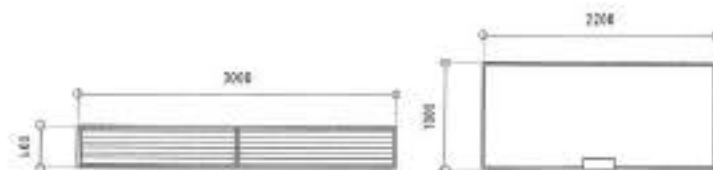
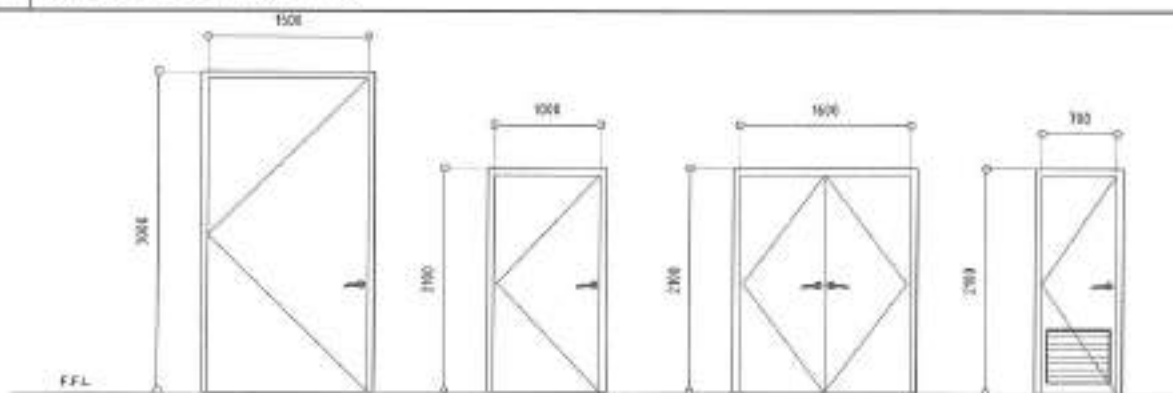
Republika ng Pilipinas  
Lungsod ng Quezon  
CITY ENGINEERING DEPARTMENT

PROJECT TITLE: <b>PROPOSED REHABILITATION OF GABALDON BUILDING AND GROUND IMPROVEMENT OF QUEZON CITY HIGH SCHOOL</b>	DRAWN BY: <i>[Signature]</i> DATE: 05-10-22 CHECKED BY: <i>[Signature]</i> REVISIONS:	SUBMITTED BY: <i>[Signature]</i> ENGR. LEO S. DEL ROSARIO RMA - PLUMBING & PROGRAMING DIVISION	RECOMMENDING APPROVAL: <i>[Signature]</i> ENGR. ISAGAN R. VERZOSA, JR. DIC, CITY ENGINEERING DEPARTMENT	APPROVED BY: <i>[Signature]</i> HON. MA. JOSEFINA G. BELMONTE CITY MAYOR	SHEET CONTENT: SECTION THRU "A" SECTION THRU "B"	SHEET NO: <b>AR-05</b> <b>05/14</b>
---	--	--	---	--	--	---



## SCALE 1:10000

## SCALE 10MM





NAME				
NO. OF SETS	4	2	1	2
DESCRIPTION	PANEL DOOR	FLUSH DOOR	DOUBLE SWING DOOR	PAC DOOR WITH LOUVERS
LOCATION	ENTRANCE	PURCHASING, REGISTRATION, SEM, FINANCIAL STAFF ROOM AND PRINCIPAL'S OFFICE	STAFF ROOM	TOILETS
REMARKS	TO BE REPLACED	TO BE REPLACED	TO BE REPLACED	TO BE REPLACED

NAME		
NOL. OF SETS	5	7
DESCRIPTION	WOODEN LOUVER WINDOW	ALUMINIUM FRAME POWDER COATED COUNTER WINDOW WITH 6mm THK CLEAR GLASS
LOCATION	HALLWAY, PERSONNEL AND PRINCIPAL'S OFFICE	HALLWAY
REMARKS	TO BE REPLACED	TO BE REPLACED

## SCALE 1-50M.

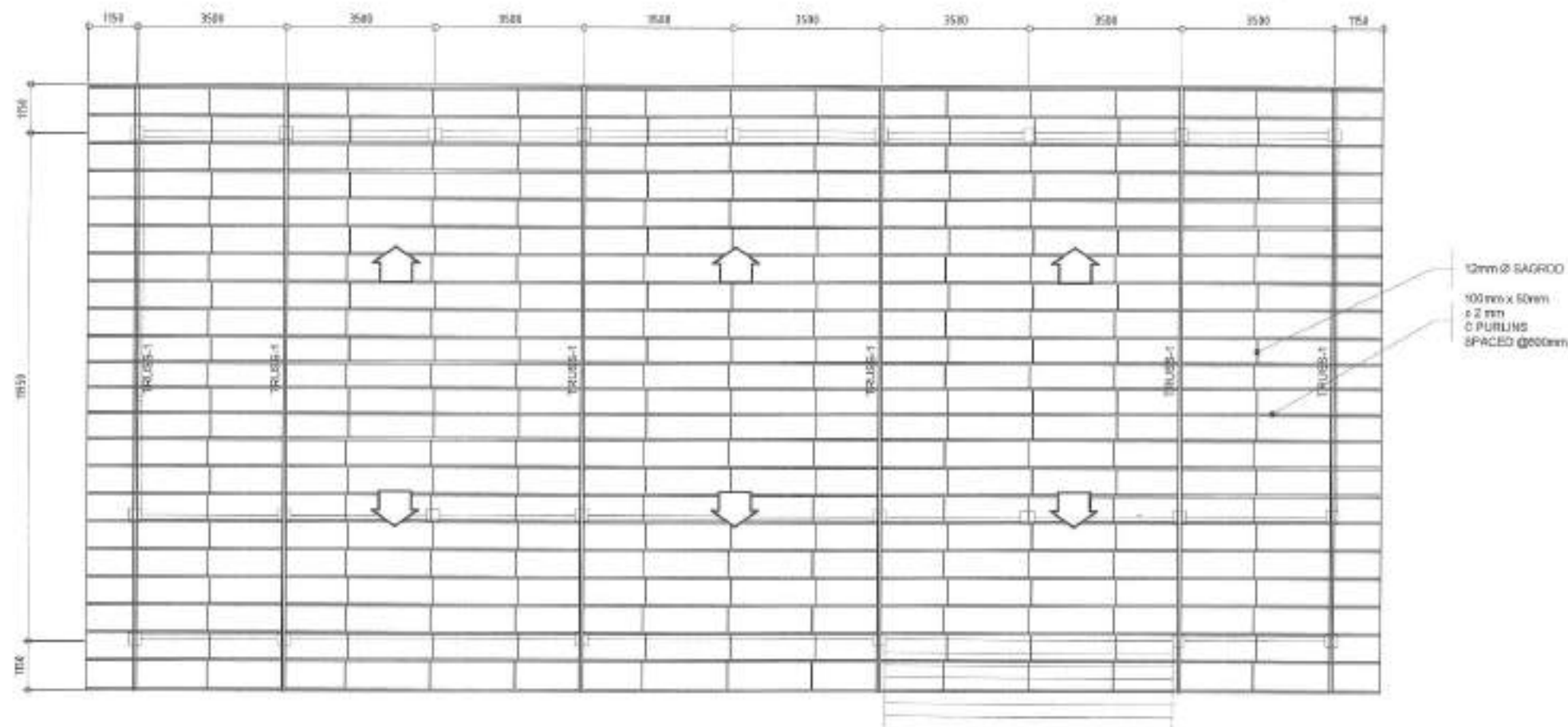


Republika ng Pilipinas  
Lungsod ng Quezon  
**CITY ENGINEERING DEPARTMENT**

PROJECT TITLE:	DRAWN BY:	SUBMITTED BY:	RECOMMENDING APPROVAL:	APPROVED BY:	SHEET CONTENT:	SHEET NO.
PROPOSED REHABILITATION OF GABALDON BUILDING AND GROUND IMPROVEMENT OF QUEZON CITY HIGH SCHOOL	DATE: 08.15.22 CHECKED BY:	 ENGR. LEO S. DEL ROSARIO HEAD, PLANNING & PROGRAMMING DIVISION	 ENGR. EDDAN R. YERZOSA, JR. ENR. CIVIL ENGINEERING (REGISTERED)	HON. MA. JOSEFINA G. BELMONTTE CITY MAJOR	SECTION THRU "D" STANDING CABINET DETAILS SCHEDULE OF DOORS AND WINDOWS	AR-06 06.14
LOCATION: BPOV, SACRED HEART, DISTRICT 4, QUEZON CITY	REVISION NO.:					

AR-06  
06 14





# 1 ROOF FRAMING PLAN

SCALE 1:100M



Republika ng Pilipinas  
Lungsod ng Quezon  
CITY ENGINEERING DEPARTMENT

PROJECT TITLE: <b>PROPOSED REHABILITATION OF GABALDON BUILDING AND GROUND IMPROVEMENT OF QUEZON CITY HIGH SCHOOL</b>	DRAWN BY: DATE: 09.15.22 CHECKED BY: REVISION NO.:	SUBMITTED BY:  ENGR. LEO S. DEL ROSARIO HEAD, PLANNING & PROGRAM DIVISION	RECOMMENDING APPROVAL:  ENGR. ISAGANI R. YERZOSA, JR. D.C. CITY ENGINEERING DEPARTMENT	APPROVED BY:  HON. MA. JOSEFINA G. BELMONTE CITY MAJOR	SHEET CONTENT: ROOF FRAMING PLAN	SHEET NO.: <b>ST-02</b> <b>08/14</b>
---	---	--	---	---	-------------------------------------	--



**GENERAL NOTES FOR SINGLE-PHASE SYSTEM**

- ALL WORKS SHALL BE EXECUTED IN ACCORDANCE TO THE LATEST EDITION OF THE PHILIPPINE ELECTRICAL CODE, PHILIPPINE ELECTRONICS CODE, THE NATIONAL BUILDING CODE OF THE PHILIPPINES AND OTHER RELATED LAWS AND ORDINANCES OF THIS CITY.
- ALL WORKS SHALL BE SUPERVISED BY A REGISTERED PROFESSIONAL RELATED TO THE ACTIVITIES BEING UNDERTAKEN.
- ALL WORKS SHALL BE COORDINATED WITH THE RESPECTIVE TRADES SO TO AVOID CONFLICTS DURING EXECUTION OF ACTIVITIES.
- ALL NECESSARY PERMITS SHALL BE SECURED AND TURNED-OVER TO THE CITY.
- ALL DRAWINGS AND SPECIFICATIONS SHALL BE CORRECTLY REVIEWED BY THE CONTRACTOR AND SHALL IMMEDIATELY BE INFORMED IF DISCREPANCY (ES) FOUND HEREIN.
- ALL DIMENSIONS, ELEVATIONS AND REFERENCES SHALL BE VERIFIED WITH THE ACTUAL CONDITION PRIOR TO EXECUTION.
- SHOP DRAWINGS SHALL BE PROVIDED AS NECESSARY PRIOR TO THE EXECUTION.
- ALL WORKS SHALL BE TESTED AND COMMISSIONED AS INDICATED IN THE SPECIFICATIONS WITH THE PRESENCE OF ALL PARTIES INVOLVED. RESULTS SHALL BE DOCUMENTED PROPERLY.
- ALL PIPES AND LAYOUT ARE ONLY DIAGRAMMATIC. ACTUAL LAYOUT OF PIPES AND FITTINGS, UNLESS OTHERWISE REQUIRED, SHALL BE PROPERLY CONCEALED.
- NO PIPES SHALL BE ALLOWED TO BE EMBEDDED IN STRUCTURAL MEMBERS, UNLESS OTHERWISE APPROVED.
- ALL PIPES, FITTINGS, EQUIPMENT AND FIXTURES SHALL BE INSTALLED IN ACCORDANCE TO MANUFACTURER'S SPECIFICATIONS AND INSTRUCTIONS.
- SUPPORTS AND HANGERS SHALL BE PROVIDED ACCORDINGLY.
- ALL EQUIPMENTS AND FIXTURES SHALL BE ENVIRONMENTAL FRIENDLY.
- INSTALLATION OF SERVICE ENTRANCE
  - THE TYPE OF SERVICE ENTRANCE SHALL BE SINGLE-PHASE TWO-WIRE PLUS GROUND, 60 HERTZ, 220V AC NOMINAL.
  - THE SERVICE ENTRANCE EQUIPMENT SHALL BE PROPERLY GROUNDED IN ACCORDANCE WITH THE PHILIPPINE ELECTRICAL CODE.
  - THE MAIN OVERCURRENT PROTECTION DEVICE SHALL BE OF THERMAL MAGNETIC MCCB IN NEMA 3R WEATHERPROOF ENCLOSURE.

**15. INSTALLATION OF LIGHTING AND POWER SYSTEM**

15.1. ALL LIGHTING AND CONVENIENCE OUTLET CIRCUITS SHALL BE 3.5 SQ. MM THIRTY-TWO (32) AWG COPPER WIRE UNLESS OTHERWISE NOTED. MINIMUM SIZE OF WIRE SHALL BE 3.5 SQ. MM. COPPER WIRE. ALL WIRES AND CABLES SHALL BE COLOR CODED AS FOLLOWS:

LINE 1 - RED  
LINE 2 - BLACK  
NEUTRAL - WHITE  
GROUND - GREEN

15.2. ALL EMBEDDED BRANCH CIRCUITS SHALL BE PVC CONDUITS AND FOR EXPOSED INSTALLATION SHALL BE IMC SUPPORTED BY CONDUIT CLAMPS EVERY 750 MILLIMETERS AND/OR CONDUIT HANGER SUPPORTS EVERY 1500 MILLIMETERS.

15.3. CONDUITS IN NO CASE SHALL NOT BE MORE THAN THE EQUIVALENT OF FOUR QUARTER BENDS IN ANY ONE RUN. ALL CONDUIT BENDS SHALL BE FIELD MADE BY USING HYDRAULIC BENDERS. MINIMUM BENDING RADIUS MUST BE IN ACCORDANCE TO THE CODE REQUIREMENTS.

15.4. ALL POWER OUTLETS AND SWITCHES SHALL BE GROUNDING TYPE WITH PARALLEL SLOTS FOR 220 V.

15.5. PROVIDE GROUND FAULT CURRENT INTERRUPTER CIRCUIT BREAKER FOR LOADS MARKED "GFCI" ON THE PLAN.

15.6. ALL METALLIC CONDUITS, SWITCHES, LIGHTING FIXTURES, PANELBOARDS, EQUIPMENTS AND NON-CURRENT CARRYING METAL PARTS SHALL BE PROPERLY GROUNDED AND BONDED.

15.8. ALL MOUNTING HEIGHTS FOR WALL MOUNTED DEVICES SHALL BE AS FOLLOWS:

- LIGHTING SWITCH - 1400 MM ABOVE FLOOR FINISH
- CONVENIENCE OUTLET - 300 MM ABOVE FLOOR FINISH  
- 100MM ABOVE WORKING COUNTER
- PANELBOARD AND CABINETS - 1400 MM ABOVE FLOOR FINISH
- EXIT LIGHT - 150 MM TOP OF DOOR JAMB
- EMERGENCY LIGHT - 2000 ABOVE FLOOR/EMERGENCY

15.1. PULL BOXES SHALL BE WHENEVER NECESSARY TO FACILITATE WIRE PULLING EVEN IF THESE ARE NOT INDICATED ON PLANS.

15.2. FOR EACH SPARE BRANCH CIRCUIT IN PANELBOARD, PROVIDE ONE 20MM DIAMETER EMPTY CONDUIT TERMINATED TO 100MM OCTAGONAL BOX ABOVE CEILING. MINIMUM SIZE OF PULLBOX SHALL BE 150MM X 150MM X 100MM.

15.3. ALL CIRCUIT BREAKERS SHALL BE BOLT-ON TYPE WITH INTERRUPTING CAPACITY AS INDICATED IN THE PLANS. PANELBOARDS SHALL BE GALVANIZED SHEET POWDER COATED GAGE 16 MINIMUM.

15.4. FEEDER AND BRANCH CIRCUIT CONDUCTORS IN CABLE TRAYS SHALL BE GROUPED, BONDED AND TAGGED TO INDICATE CLEARLY THE ELECTRICAL CHARACTERISTICS SUCH AS CIRCUIT NUMBER AND PANEL DESIGNATION.

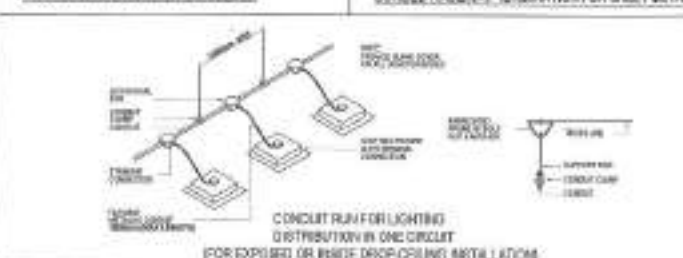
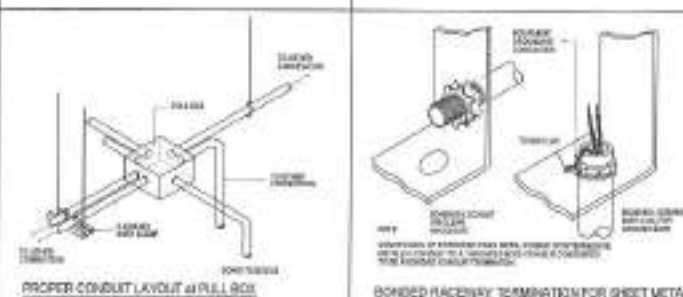
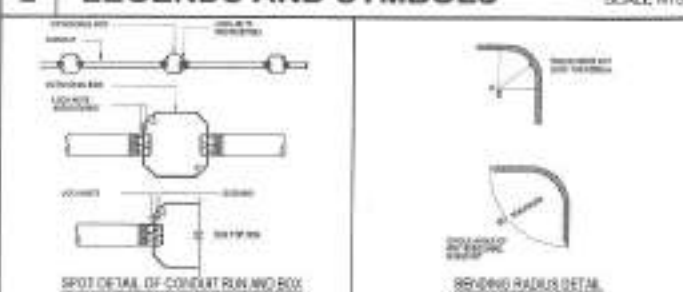
15.5. REFER TO MECHANICAL, PLUMBING AND FIRE PROTECTION DRAWINGS FOR RATINGS AND LOCATIONS OF EQUIPMENT AS WELL AS THEIR CONTROL SEQUENCES AS SPECIFIED AND OR SHOWN UNDER THEIR RESPECTIVE SECTIONS.

15.6. ALL MATERIALS TO BE USED AND THE EQUIPMENT TO BE INSTALLED SHALL BE OF THE BEST QUALITY, BRAND NEW AS SPECIFIED. IT MUST BE APPROVED TYPE FOR THE PARTICULAR LOCATION AND PURPOSE INTENDED.

CONDUIT RUN	WIRE	OUTLET C.D.
SWITCH RUN	3.5	ACU DETECT WITH COB
PANEL BOARD	3.5	BASE WING SWITCH
300MM X 150MM 20MM LCL, 20MM TYPE WITH COMPLETE ACCESSORIES, REDUCED TYPE	3.5	TRIP SENS SWITCH
10W FLUORESCENT TYPE	3.5	SINGLE GANG SWITCH
300MM X 150MM 20MM LCL, 20MM TYPE WITH COMPLETE ACCESSORIES, REDUCED TYPE	3.5	CIRCUIT BREAKER

**2 LEGENDS AND SYMBOLS**

SCALE: MTS.

**1 GENERAL NOTES**

SCALE: NTS.

**3 MISCELLANEOUS DETAILS**

SCALE: NTS.



Republika ng Pilipinas  
Lungsod ng Quezon  
CITY ENGINEERING DEPARTMENT

PROJECT TITLE:  
**PROPOSED REHABILITATION OF  
GABALDON BUILDING AND GROUND  
IMPROVEMENT OF QUEZON CITY  
HIGH SCHOOL**

LOCATION:  
BRGY. SACRED HEART, DISTRICT 4, QUEZON CITY

DRAWN BY:  
DATE: 09/14/2022  
CHECKED BY:  
REVISION NO.:

SUBMITTED BY:  
**ENGR. LEO S. DEL ROSARIO**  
HEAD, PLUMBING & PIPING DIVISION

RECOMMENDING OFFICIAL:  
**ENGR. MAGAM R. VERZOSA, JR.**  
CHIEF, PLUMBING DIVISION

AFFIRMING BY:  
**HON. MA. JOSEFINA G. BELMONTE**  
CITY MAYOR

SHEET CONTENT:  
GENERAL NOTES  
LEGENDS AND SYMBOLS  
MISCELLANEOUS  
DETAILS

SHEET NO.:  
**EL-01**  
**09/14**



**GABALDON BUILDING (EXISTING)**

LOCATION: PERSONNEL ROOM

 MOUNTING: NEMA1, SURFACE MOUNTED WITH GRAY  
 POWDERED COATED FINISH WITH RAL 5-TERMINAL BLOCK  
 FOR SOLID GROUND BUS

CKT. NO.	LOAD DESCRIPTION	VOLTS	VA	AMP	AT	SIZE OF	
						WIRES	CONDUIT
1	ADJ. EXISTING	230	2000	8.70	30	EXISTING	EXISTING
2	ADJ. EXISTING	230	2000	8.70	30	EXISTING	EXISTING
3	ADJ. EXISTING	230	2000	8.70	30	EXISTING	EXISTING
4	ADJ. EXISTING	230	2000	8.70	30	EXISTING	EXISTING
5	ADJ. EXISTING	230	2000	8.70	30	EXISTING	EXISTING
6	EXISTING	230	2000	8.70	30	EXISTING	EXISTING
7	SPARE	230	-	-	30	-	-
8	C.O. (PRINCIPAL OFFICE)	230	1800	7.83	20	2-3.5mm <sup>2</sup> THHN COPPER WIRE 1-2.0mm <sup>2</sup> THW GROUND WIRE	IN 20mm <sup>2</sup> PVC
9	SPARE	230	-	-	20	-	-
10	L.O. (STAFF ROOM)	230	3000	4.35	15	2-3.5mm <sup>2</sup> THHN COPPER WIRE 1-2.0mm <sup>2</sup> THW GROUND WIRE	IN 20mm <sup>2</sup> PVC
11	L.O. (PRINCIPAL OFFICE)	230	3000	4.35	15	2-3.5mm <sup>2</sup> THHN COPPER WIRE 1-2.0mm <sup>2</sup> THW GROUND WIRE	IN 20mm <sup>2</sup> PVC
12	C.O. (FINANCIAL STAFF OFFICE)	230	1800	7.83	20	2-3.5mm <sup>2</sup> THHN COPPER WIRE 1-2.0mm <sup>2</sup> THW GROUND WIRE	IN 20mm <sup>2</sup> PVC
13	C.O. (REGISTRAR)	230	1800	7.83	20	2-3.5mm <sup>2</sup> THHN COPPER WIRE 1-2.0mm <sup>2</sup> THW GROUND WIRE	IN 20mm <sup>2</sup> PVC
14	L.O. (SEM & FSO)	230	1000	4.35	15	2-3.5mm <sup>2</sup> THHN COPPER WIRE 1-2.0mm <sup>2</sup> THW GROUND WIRE	IN 20mm <sup>2</sup> PVC
15	L.O. (REGISTRAR)	230	1000	4.35	15	2-3.5mm <sup>2</sup> THHN COPPER WIRE 1-2.0mm <sup>2</sup> THW GROUND WIRE	IN 20mm <sup>2</sup> PVC
16	C.O. (SEM & HALLWAY)	230	1800	7.83	20	2-3.5mm <sup>2</sup> THHN COPPER WIRE 1-2.0mm <sup>2</sup> THW GROUND WIRE	IN 20mm <sup>2</sup> PVC
17	L.O. (PERSONNEL & HALLWAY)	230	1000	4.35	15	2-3.5mm <sup>2</sup> THHN COPPER WIRE 1-2.0mm <sup>2</sup> THW GROUND WIRE	IN 20mm <sup>2</sup> PVC
18	SPARE	230	-	-	15	-	-
19	EXISTING	230	1800	7.83	20	EXISTING	EXISTING
20	SPARE	230	-	-	15	-	-
			26000	113.10			

**COMPUTATION :**

$$IT = \frac{26000}{230 V}$$

$$IT = 113.04 \text{ AMP}$$

**OVER CURRENT PROTECTION**

USE : 150AT, 2P, 230V MCCB IN NEMA 1 (EXISTING)

**MAIN FEEDER:**

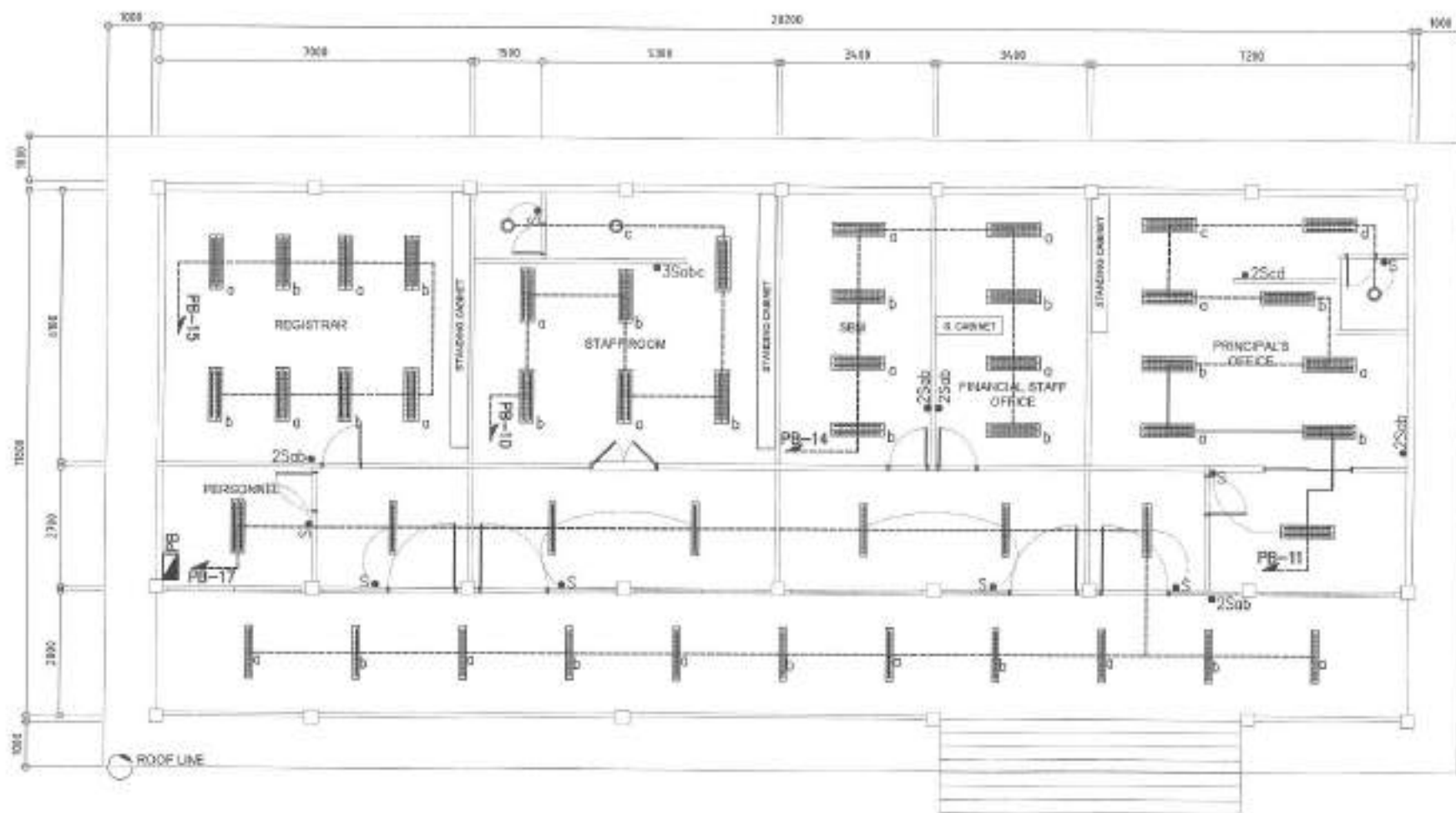
 USE : 2 - 60mm<sup>2</sup> THHN & 1-22mm<sup>2</sup> THW GROUND WIRE  
 IN 50mm<sup>2</sup> PVC (EXISTING)

**1 LOAD SCHEDULE**

SCALE 1:100M


 Republika ng Pilipinas  
 Lungsod ng Quezon  
**CITY ENGINEERING DEPARTMENT**

PROJECT TITLE:	DESIGNED BY:	SUBMITTED BY:	RECOMMENDING APPROVAL:	APPROVED BY:	SHEET CONTENT:	SHEET NO.
PROPOSED REHABILITATION OF GABALDON BUILDING AND GROUND IMPROVEMENT OF QUEZON CITY HIGH SCHOOL	DATE: 08/18/22 CHECKED BY: [Signature]	[Signature] ENGR. LEO S. DEL ROSARIO HEAD, PLANNING & PROGRAMS DIVISION	[Signature] ENGR. ISAAC R. VERZOSA, JR. DCC, CITY ENGINEERING DEPARTMENT	[Signature] HON. MA. JOSEFINA G. BELMONTE CITY MAYOR	LOAD SCHEDULE	EL-02 10/14
LOCATION: BPOV, SAKED HEAVE, DISTRICT 4, QUEZON CITY	REASONING:					



# 1 LIGHTING LAYOUT

SCALE 1:100M



Republika ng Pilipinas  
Lungsod ng Quezon  
CITY ENGINEERING DEPARTMENT

PROJECT TITLE:  
**PROPOSED REHABILITATION OF  
GABALDON BUILDING AND GROUND  
IMPROVEMENT OF QUEZON CITY  
HIGH SCHOOL**  
LOCATION:  
BRGY. SACRED HEART, DISTRICT 4, QUEZON CITY

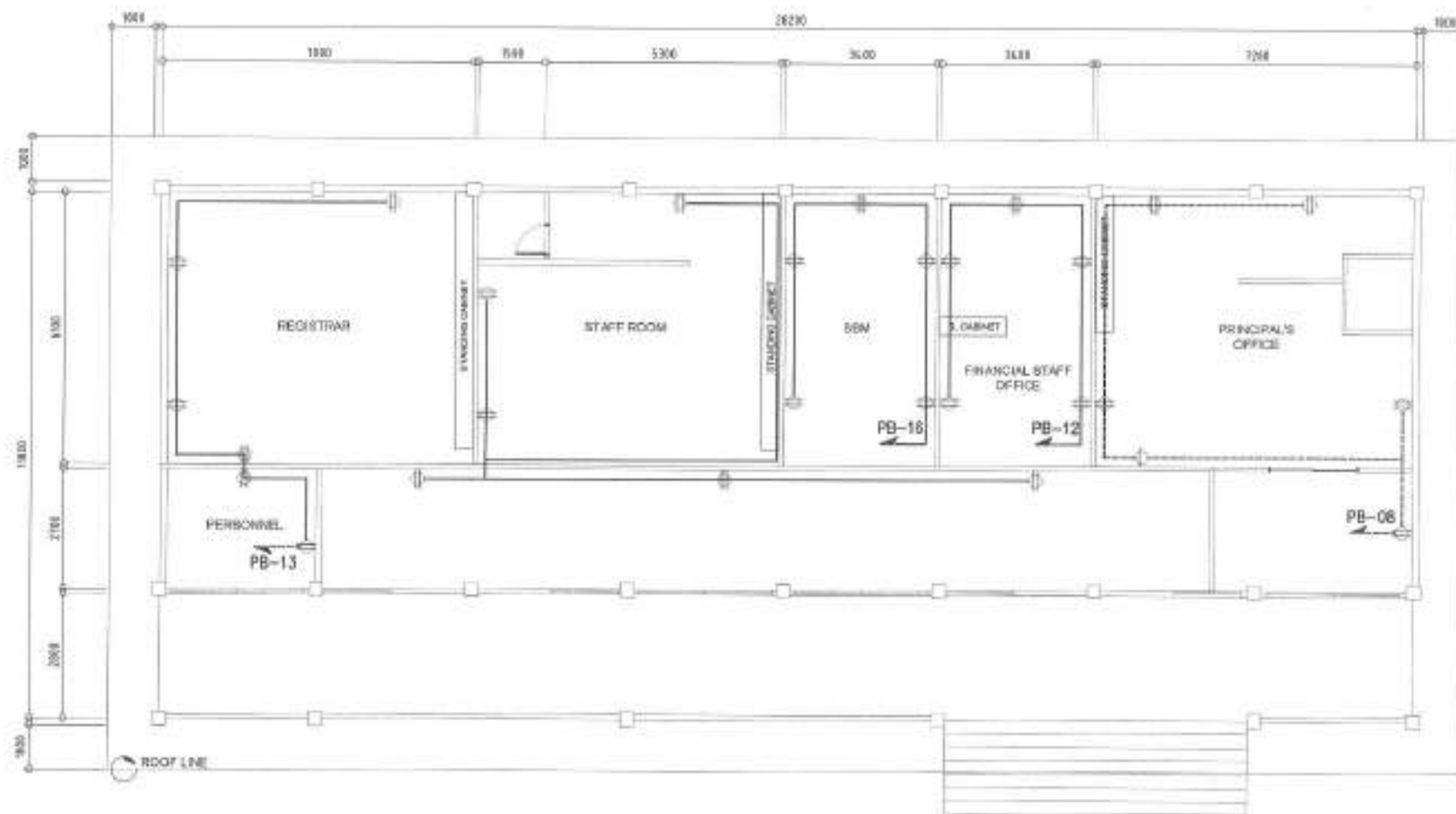
DRAWN BY:  
DATE: 05/10/22  
CHECKED:  
REVISION NO.:

SUBMITTED BY:  
ENR. LEO S. DEL ROSARIO  
HEAD, PLANNING & RESEARCH DIVISION

RECOMMENDING APPROVAL:  
ENR. EUGENIO R. VERZOSA, JR.  
DCC, CITY ENGINEERING DEPARTMENT

APPROVED BY:  
HON. MA. JOSEFINA G. BELMONTIE  
CITY MAYOR

SHEET CONTENT:  
LIGHTING LAYOUT  
SHEET NO.  
EL-03  
11/14



# 1 POWER LAYOUT

SCALE 1:100M

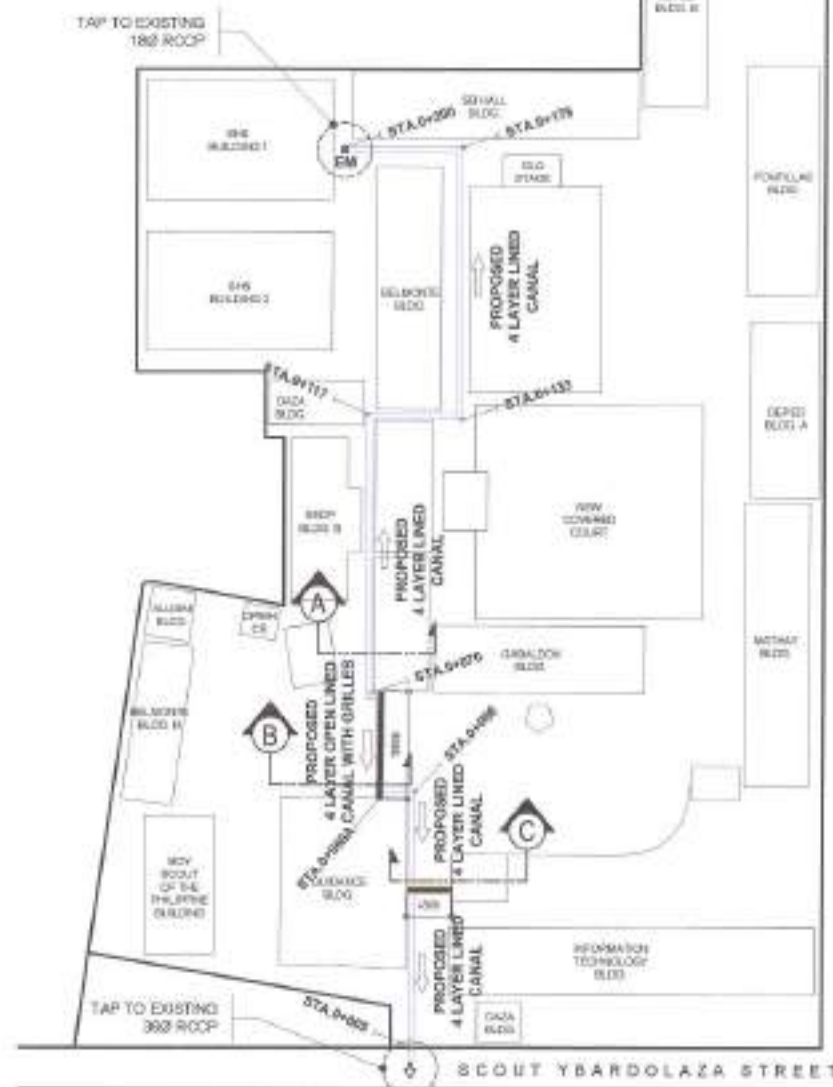


Republika ng Pilipinas  
 Lungsod ng Quezon  
**CITY ENGINEERING DEPARTMENT**

PROJECT TITLE: <b>PROPOSED REHABILITATION OF GABALDON BUILDING AND GROUND IMPROVEMENT OF QUEZON CITY HIGH SCHOOL</b>	DRAWN BY: JRM DATE: 08.30.22 CHECKED: [Signature] REVISION NO: 1	SUBMITTED BY: [Signature] ENGR. LEO S. DEL ROSARIO HEAD, PLANNING & PROGRAMS DIVISION	RECOMMENDING APPROVAL: [Signature] ENGR. BASILITO VERZOSA, JR. CITY ENGINEERING DEPARTMENT	APPROVED BY: [Signature] HON. MA. JOSEFINA G. BELMONT CITY ENGINEER	SHEET CONTENT: POWER LAYOUT	SHEET NO.: EL-04 12/14
---	---	---	--	---	--------------------------------	------------------------------

## LEGENDS:

- PROPOSED 4 LAYER OPEN LINED CANAL WITH GRILLES  
 PROPOSED 4 LAYER LINED CANAL



AREA	
A	337.50 SQ.M
B	562.20 SQ.M
C	323.00 SQ.M
D	323.00 SQ.M
E	170.00 SQ.M
F	224.00 SQ.M
G	908.00 SQ.M



## 1 STORM DRAINAGE PLAN

SCALE: NTS

## 2 ROADWORK PLAN

SCALE: NTS



Republika ng Pilipinas  
 Lungsod ng Quezon  
 CITY ENGINEERING DEPARTMENT

PROJECT TITLE:  
**PROPOSED REHABILITATION OF  
 GABALDON BUILDING AND GROUND  
 IMPROVEMENT OF QUEZON CITY  
 HIGH SCHOOL**

LOCATION:  
 BRGY. SACRED HEART, DISTRICT 4, QUEZON CITY

DRAWN BY: *[Signature]*  
 DATE: 08/15/22  
 CHECKED BY: *[Signature]*  
 REVISION NO:

SUBMITTED BY: *[Signature]*  
 ENGR. LEO S. DE ROSARIO  
 HEAD, PLANNING PROGRAM DIVISION

RECOMMENDING APPROVAL: *[Signature]*  
 ENGR. ISAGANI R. VERZOSA, JR.  
 DIL. CITY ENGINEERING DEPARTMENT

APPROVED BY: *[Signature]*  
 HON. MA. JOSEFINA G. BELMONTE  
 CITY MAYOR

SHEET CONTENT  
 STORM DRAINAGE PLAN

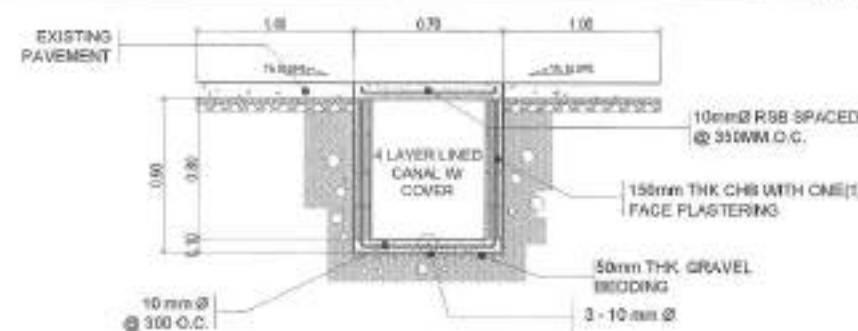
SHEET NO.

CW-01  
 13/14



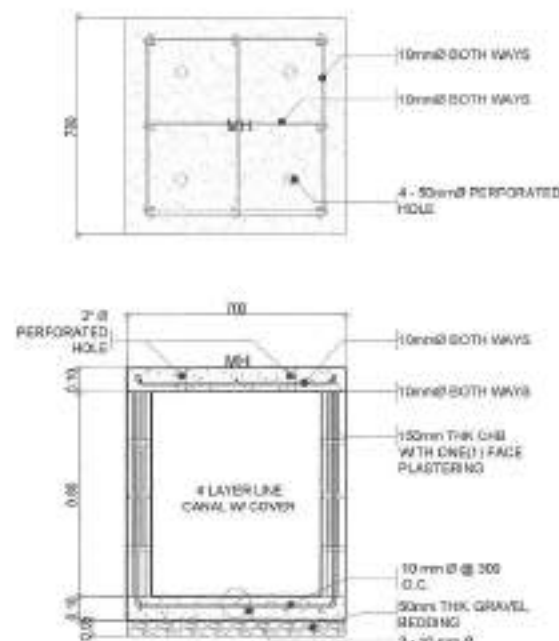
1 ROADWAY CROSS SECTION

SCALE: NTS.



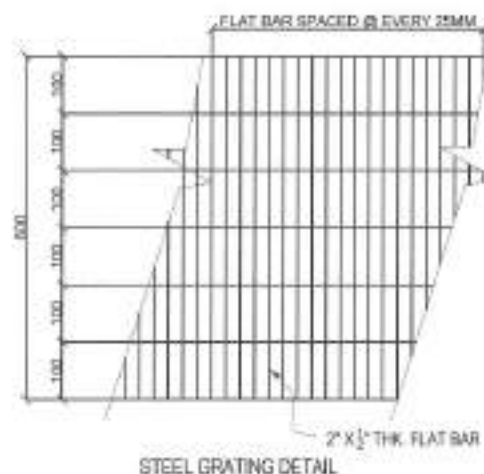
4 SECTION A

SCALE: NTS.



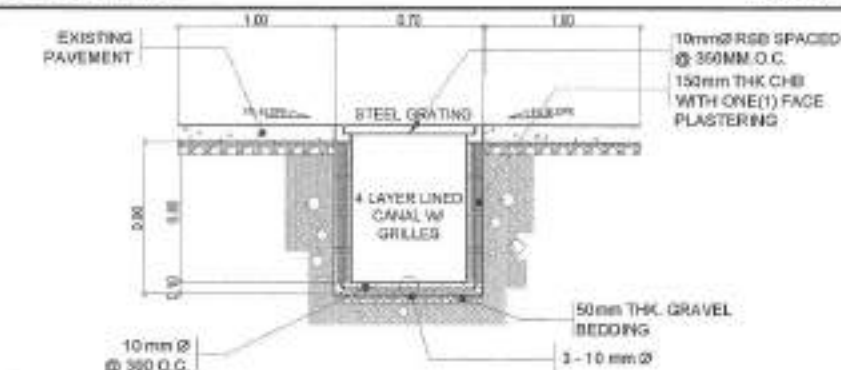
2 TYPICAL DETAIL FOR 4 LAYER LINED CANAL

SCALE: NTS.



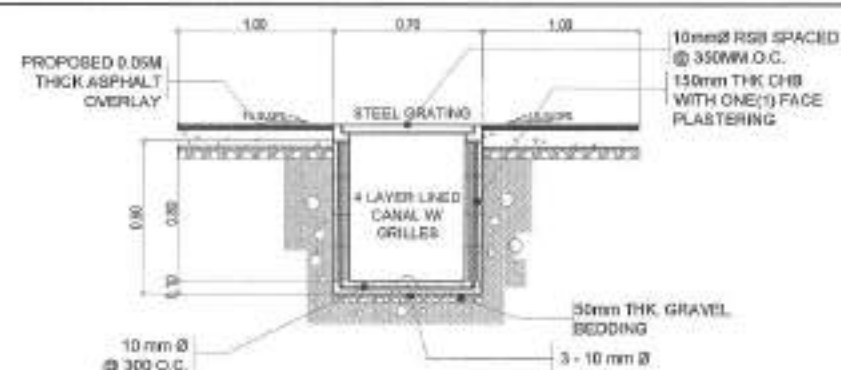
3 4 LAYER LINED CANAL STEEL GRATING DETAIL

SCALE: NTS.



5 SECTION B

SCALE: NTS.



6 SECTION C

SCALE: NTS.



Ropelika ng Pilgrina  
Lungsod ng Quezon  
CITY ENGINEERING DEPARTMENT

PROJECT TITLE:  
**PROPOSED REHABILITATION OF  
GABALDON BUILDING AND GROUND  
IMPROVEMENT OF QUEZON CITY  
HIGH SCHOOL**  
LOCATION:  
BRGY. SACRED HEART, DISTRICT 4, QUEZON CITY

DESIGNED BY:  
DATE: 06.10.22  
CHECKED BY:  
REVIEWED BY:

SUBMITTED BY:  
**ENGR. LEO S. DEL ROSARIO**  
HEAD, PLANNING & PROGRAMING DIVISION

RECOMMENDING APPROVAL:  
**ENGR. EDWIN R. VERZOSA, JR.**  
C.E. CITY ENGINEER (SCHEMATIC)

APPROVED BY:  
**MON. MA. JOSEFINA G. DELMONTE**  
CITY MANOR

SHEET CONTENT:  
ROADWAY CROSS SECTION  
TYPICAL DETAIL FOR 4  
LAYER LINED CANAL  
STEEL GRATING  
DETAILS  
SECTIONS

SHEET NO.  
**CW-02**  
**14/14**

## ***Section VIII. Bill of Quantities***

### **Notes on the Bill of Quantities**

#### **Objectives**

The objectives of the Bill of Quantities are:

- a. to provide sufficient information on the quantities of Works to be performed to enable Bids to be prepared efficiently and accurately; and
- b. when a Contract has been entered into, to provide a priced Bill of Quantities for use in the periodic valuation of Works executed.

In order to attain these objectives, Works should be itemized in the Bill of Quantities in sufficient detail to distinguish between the different classes of Works, or between Works of the same nature carried out in different locations or in other circumstances which may give rise to different considerations of cost. Consistent with these requirements, the layout and content of the Bill of Quantities should be as simple and brief as possible.

#### **Daywork Schedule**

A Daywork Schedule should be included only if the probability of unforeseen work, outside the items included in the Bill of Quantities, is high. To facilitate checking by the Entity of the realism of rates quoted by the Bidders, the Daywork Schedule should normally comprise the following:

- a. A list of the various classes of labor, materials, and Constructional Plant for which basic daywork rates or prices are to be inserted by the Bidder, together with a statement of the conditions under which the Contractor will be paid for work executed on a daywork basis.
- b. Nominal quantities for each item of Daywork, to be priced by each Bidder at Daywork rates as Bid. The rate to be entered by the Bidder against each basic Daywork item should include the Contractor's profit, overheads, supervision, and other charges.

#### **Provisional Sums**

A general provision for physical contingencies (quantity overruns) may be made by including a provisional sum in the Summary Bill of Quantities. Similarly, a contingency allowance for possible price increases should be provided as a provisional sum in the Summary Bill of Quantities. The inclusion of such provisional sums often facilitates budgetary approval by avoiding the need to request periodic supplementary approvals as the future need arises. Where such provisional sums or contingency allowances are used, the SCC should state the manner in which they will be used, and under whose authority (usually the Procuring Entity's Representative's).

The estimated cost of specialized work to be carried out, or of special goods to be supplied, by other contractors should be indicated in the relevant part of the Bill of Quantities as a particular provisional sum with an appropriate brief description. A separate procurement procedure is normally carried out by the Procuring Entity to select such specialized contractors. To provide an element of competition among the Bidders in respect of any facilities, amenities, attendance, etc., to be provided by the successful Bidder as prime Contractor for the use and convenience of the specialist contractors, each related provisional sum should be followed by an item in the Bill of Quantities inviting the Bidder to quote a sum for such amenities, facilities, attendance, etc.

### **Signature Box**

A signature box shall be added at the bottom of each page of the Bill of Quantities where the authorized representative of the Bidder shall affix his signature. Failure of the authorized representative to sign each and every page of the Bill of Quantities shall be a cause for rejection of his bid.

These Notes for Preparing a Bill of Quantities are intended only as information for the Procuring Entity or the person drafting the Bidding Documents. They should not be included in the final documents.

**PROJECT TITLE :** PROPOSED REHABILITATION OF GABALDON BUILDING AND GROUND IMPROVEMENT OF QUEZON CITY HIGH SCHOOL

**LOCATION :** BARANGAY SACRED HEART, DISTRICT 4, QUEZON CITY

**PROJECT NO. :** 23 - 00009

**DURATION :** One Hundred Twenty (120) Calendar Days

***BREAKDOWN OF COST***

ITEM NO	WORK DESCRIPTION & SCOPE OF WORKS	MATERIALS COST	LABOR COST	INDIRECT COST	AGGREGATE COST
GR	GENERAL REQUIREMENTS	₱	₱	₱	₱
OGR	OTHER GENERAL REQUIREMENTS				
SW	SITE WORKS				
CWS	CIVIL / STRUCTURAL WORKS				
AW	ARCHITECTURAL WORKS				
EW	ELECTRICAL WORKS				
UTI	UTILITY AND ANCILLARY WORKS				

**TOTAL COST** ₱ \_\_\_\_\_

**LUMP SUM BID IN WORDS :** \_\_\_\_\_

\_\_\_\_\_

**Contractor :** \_\_\_\_\_



**BILL OF QUANTITIES**  
(Building Construction/Rehabilitation Project)

**PROJECT TITLE :** PROPOSED REHABILITATION OF GABALDON BUILDING AND GROUND IMPROVEMENT OF QUEZON CITY HIGH SCHOOL

**LOCATION :** BARANGAY SACRED HEART, DISTRICT 4, QUEZON CITY

**PROJECT NO. :** 23 - 00009

**DURATION :** One Hundred Twenty (120) Calendar Days

**SCOPE OF WORKS:**

<b>GR</b>	<b>General Requirements</b> include billboard(s).
<b>OGR</b>	<b>Other General Requirements (Non O.C.M.)</b> , but not limited to:
1	Temporary enclosure around the construction area.
2	Temporary water system including water meter/sub-meter and connections.
3	Temporary electrical system including electric meter/sub-meter and connections.
4	Scaffolding for general use (rental).
5	Steel Barricade
6	Clearing, hauling and disposal of construction materials and debris.
<b>SW</b>	<b>Site Works</b>
1	Demolition/removal works.
2	Clearing and cleaning for painting preparation.
<b>CWS</b>	<b>Civil / Structural Works</b>
1	Earthworks includes application of termite treatment.
2	Metal works include fabrication of metal structures.
3	Roofing works include installation of roofing and bended materials.
<b>AW</b>	<b>Architectural Works</b>
1	Wall finishes include tile works for walls and other wall finishes.
2	Ceiling works include installation of ceilings with framings.
3	Painting works include painting for exterior and interior walls, metal surfaces and ceilings.
4	Fabricated materials include installation of doors and windows, and cabinetry.
<b>EW</b>	<b>Electrical Works</b>
1	Installation of roughing-ins and wirings.
2	Installation of system devices, energy efficient lighting fixtures and components.
<b>UTI</b>	<b>Utility and Ancillary Works</b>
<b>UTI-I</b>	<b>Site Works</b>
1	Removal works includes removal of existing asphalt pavement and concrete pavement.
2	Excavation for roadway and drainage.
<b>UTI-II</b>	<b>Civil Works</b>
1	Earthworks includes preparation of aggregate base course.
2	Construction of drainage system includes CHB lined canal (4-layer), steel gratings, tapping drainage.
3	Asphalt overlay includes application of bituminous prime coat and bituminous concrete surface course.
<b>OGR</b>	<b>Others (included in Overhead, Contingencies and Miscellaneous Expenses)</b>
1	Provision of construction health and safety such as safety gears, medical kit, etc.
2	Preparation of shop drawing, as necessary.
3	Preparation of as-built plans (signed and sealed by the respective professional(s)).

ITEM CODE	WORK DESCRIPTION AND SCOPE OF WORKS	QTY	UNIT	UNIT COST	TOTAL COST
GR	GENERAL REQUIREMENTS				
SPL7	Billboard (1.20m x 2.40m in Plywood)	1	piece	₱	₱
			MATERIAL COST GR		₱
			LABOR COST GR		
			DIRECT COST GR		₱

ITEM CODE	WORK DESCRIPTION AND SCOPE OF WORKS	QTY	UNIT	UNIT COST	TOTAL COST
<b>OGR</b>	<b>OTHER GENERAL REQUIREMENTS (NON-O.C.M.)</b>				
OGR02c	Temporary Enclosure at the Construction Area (Coveraged Length; H=2.4m)	80	l.m.	₱	₱
OGR0301	Temporary Water Facility	1	unit		
OGR0302	Temporary Electrical Facility	1	unit		
OGR05	Scaffolding (Rental)	275	sq.m.		
SPL 13b	Steel Barricade (Rental)	22	unit		
		Subtotal OGR02c-SPL13b (Material)			₱
OGR01	Clearing, Hauling and Disposal of Construction Materials and Debris	10	t.l.	₱	₱
			Subtotal OGR01 (Labor)		₱
			<b>DIRECT COST OGR</b>		<b>₱</b>
<b>SW</b>	<b>SITE WORKS</b>				
	Demolition / Removal Works				
DEMV010	Removal of Existing Door Jamb and Door Including Hardware and Accessories	12	set	₱	₱
DEMV015	Removal of Ceiling Board Including Framing	510	sq.m.		
DEMV023	Removal of Existing Partition Board Including Framing	116	sq.m.		
DEMV025b	Removal of Existing Roof Sheet Including Framing Sytem (Truss)	420	sq.m.		
DEMV027	Removal of Existing Window Panel Including Hardware and Accessories	26	sq.m.		
SW03	Cleaning and Clearing for Painting Preparation	301	sq.m.		
			<b>DIRECT COST SW</b>		<b>₱</b>
<b>CWS</b>	<b>CIVIL / STRUCTURAL WORKS</b>				
<b>CWSE</b>	Earthworks				
CWSE03	Termite Treatment (Wooden Application)	639	sq.m.	₱	₱
CWSME	Metal Works				
CWSME07	Structural Steel				
CWSME0703	75mm x 75mm x 6mm Angle Bar	2,493	kg		
CWSME0703	62mm x 62mm x 4mm Angle Bar	980	kg		
CWSME0708	50mm x 100mm x 2mm C-Purlins	2,572	kg		
CWSME0712	12mmØ Sagrod	144	kg		
MC	Miscellaneous and Consumables				
MC/G	Common Items				
MC/G05	Grinding Disc, 4"	10	piece		
MC/G19	Acetylene Tank (Refill)	8	tank		
MC/G23	Cut off Blade / Wheel	10	piece		
MC/G27	Drill Bit, 20mm Ø (Metal)	10	piece		

ITEM CODE	WORK DESCRIPTION AND SCOPE OF WORKS	QTY	UNIT	UNIT COST	TOTAL COST
MC/G29	Oxygen Tank (Refill)	16	tank		
MC/G36	Welding Rod (Steel)	92	kg		
CWSPRW	Roofing Works				
CWSPRW05	Thermal Insulation				
CWSPRW0503	6mm thk One-Sided Aluminum Foil Thermal Insulation	441	sq.m.		

ITEM CODE	WORK DESCRIPTION AND SCOPE OF WORKS	QTY	UNIT	UNIT COST	TOTAL COST
CWSPRW07	Pre-Painted Roofing, Components and Accessories				
CWSPRW0701	Pre Painted Rib Type Long Span Metal Roofing Sheet, 0.45mm thk GA 26 with Connection Accessories	441	sq.m.		
CWSPRW0707	Pre Painted G.I. Ridge Roll, GA 26 x 0.60m	32	l.m.		
CWSPRW0708	Pre Painted G.I. End Flashing, GA 26 x 0.60m	93	l.m.		
CWSPRW08	Fiber Cement Fascia Board				
CWSPRW0802	12mm thk x 12" Fiber Cement Fascia Board	93	l.m.		
			<b>MATERIALS COST CWS</b>		<b>P</b>
			<b>LABOR COST CWS</b>		
			<b>DIRECT COST CWS</b>		<b>P</b>
<b>AW</b>	<b>ARCHITECTURAL WORKS</b>				
AW03	Wall Finishes				
AW0315	6mm thk Fiber Cement Board on Metal Studs (Double Wall)	207	sq.m.	<b>P</b>	<b>P</b>
AW02	Ceiling Finishes				
AW0204	6.0mm thk. Fibercement Board including Metal Framing	357	sq.m.		
AWP	Painting Works				
AWP01	Painting Materials (3 coats)				
AWP0101	Flat Latex Paint Finish (Interior Wall - 3 Coats)	728	sq.m.		
AWP0102	Elastomeric Paint Finish (Exterior Wall - 3 Coats)	332	sq.m.		
AWP0105	Flat Latex Paint Finish (Ceiling - 3 Coats)	357	sq.m.		
AWP0106	Epoxy Enamel Paint Finish ( Steel Member - 3 Coats)	502	sq.m.		
			Materials Cost AW03-AWP		<b>P</b>
			Labor Cost AW03-AWP		
			Subtotal AW03-AWP		<b>P</b>
AW01	Fabricated Materials				
AW0143	Wooden Shelves	34	sq.m.	<b>P</b>	<b>P</b>
AWD01	Installation of Doors				
AWD0101	Doors with Hardware and Accessories				
AWD010254	D-1 (1.50m x 3.00m) Wooden Panel Door with Door Jamb, Hardware and Complete Accessories	4	set		
AWD010229	D-2 (1.00m x 2.10m) Wooden Flush Door with Door Jamb, Hardware and Complete Accessories	5	set		
AWD010255	D-3 (1.60m x 2.10m) Double Leaf Wooden Flush Door with Door Jamb, Hardware and Complete Accessories	1	set		
AWD010160	D-4 (0.70m x 2.10m) PVC Flush Door with Louver	2	set		

ITEM CODE	WORK DESCRIPTION AND SCOPE OF WORKS	QTY	UNIT	UNIT COST	TOTAL COST
AWW03	Installation of Windows				
AWD010241	W-1 (3.00m x 0.40m) Wooden Louvered Window	8	set		

ITEM CODE	WORK DESCRIPTION AND SCOPE OF WORKS	QTY	UNIT	UNIT COST	TOTAL COST
AWW03	W-2 (2.20m x 1.00m) Aluminum Frame Powder Coated Counter Window 6mm thk Clear Glass	7	set		
				Materials Cost AW01	₱
				Labor Cost AW01	
				Subtotal AW01	₱
				<b>MATERIALS COST AW</b>	₱
				<b>LABOR COST AW</b>	
				<b>DIRECT COST AW</b>	₱
<b>EW</b>	<b>ELECTRICAL WORKS</b>				
	Lighting and Power System				
EW01	Pipes				
EW0101	20mmØ PVC Pipe	190	piece	₱	₱
EW02	Flexible Tubes				
EW0209	20mmØ Flexible PVC Tube	52	l.m.		
EW05	Fittings and Accessories				
EW05001	20mmØ PVC Elbow	19	piece		
EW05010	20mmØ PVC Adaptor	190	piece		
EW05119	20mmØ Straight Connector	52	piece		
EW05022	20mmØ PVC Locknut and Bushing	190	pair		
EW06	Boxes and Fabricated Pullbox				
EW0601	50mm x 100mm PVC Utility Box	43	piece		
EW0602	100mm x 100mm PVC Junction Box with Cover	52	piece		
EW0607	Fabricated Pull Box, 6" x 6" x 4" @ 0.16 (0.15m x 0.15m x 0.10m)	1	box		
EW09	Wires and Cables				
EW0901	THHN Wires				
EW090102a	3.5mm² THHN Wire	8	roll		
EW0903	TW Wires				
EW090301a	2.0mm² TW Wire	4	roll		
EW11	Lighting Fixtures and Other Devices (Energy Efficient)				
EW11096	10W LED Bulb	3	piece		
EW11120	150mm Ø Round Recessed Pinlight (case)	3	piece		
EW11038	300mm x 1200mm, 1 x 18w LED, Troffer Type, with complete accessories, Recessed Type	17	piece		
EW11039	300mm x 1200mm, 2 x 18w LED, Troffer Type, with complete accessories, Recessed Type	32	piece		
EW10	Wiring Devices				
EW1002	Outlet with Grounding , Two-Gang	28	piece		
EW1015	Switch with Plate and Cover, One-Gang	8	piece		
EW1016	Switch with Plate and Cover, Two-Gang	6	piece		
EW1017	Switch with Plate and Cover, Three-Gang	1	piece		

ITEM CODE	WORK DESCRIPTION AND SCOPE OF WORKS	QTY	UNIT	UNIT COST	TOTAL COST
EW16	Pipe Hangers and Supports				
EW1601	Horizontal Layout of Pipe	64	l.m.		
MC	Miscellaneous and Consumables				
MC/G01	All Around Sealant	2	qrt		
MC/G06	Hacksaw Blade	2	piece		



ITEM CODE	WORK DESCRIPTION AND SCOPE OF WORKS	QTY	UNIT	UNIT COST	TOTAL COST
MC/G07	Masking Tape	2	roll		
MC/G14	Solvent Cement, 400cc	1	can		
MC/G17	Torch with Butane	1	set		
MC/G37	GI Tie Wire, Ga. 16	3	kg		
MC/E01	Electrical Tape	12	roll		
MC/E03	Pulling Lubricant	3	can		
MC/E04	Rubber Tape	1	roll		
AWP02	Other Painting Materials				
AWP0218	Epoxy Primer	1	lit		
			<b>MATERIALS COST EW</b>		<b>₱</b>
			<b>LABOR COST EW</b>		
			<b>DIRECT COST EW</b>		<b>₱</b>
<b>UTI</b>	<b>UTILITY AND ANCILLARY WORKS</b>				
UTI-I	Site Works				
105	Roadway Excavation	16	cu.m.	₱	₱
104b	Removal of Existing Asphalt Pavement	2,250	sq.m.		
104c	Removal of Existing Concrete Pavement	11	sq.m.		
106	Excavation for Structures (Drainage)	151	cu.m.		
			Subtotal UTI-I (Labor)		₱
UTI-II	Civil Works				
CWSE	Earthworks				
200	Aggregate Base Course	16	cu.m.	₱	₱
CWSMH	Manhole				
SPL5	Tapping Drainage	22	set		
CWSAH	Asphalting				
302	Bituminous Prime Coat	2.4	m.t.		
310	Bituminous Concrete Surface Course	265	m.t.		
CWLC	Line Canals				
SPL 2e	CHB Lined Canal with Cover (4-layers)	200	l.m.		
SPL 2f	CHB Open Lined Canal (4-layers)	15	l.m.		
CWLC03	Steel Grating (width = 400 mm)	15	l.m.		
			Material Cost UTI-II		
			Labor Cost UTI-II		
			Subtotal Cost UTI-II		
			<b>MATERIAL COST UTI</b>		
			<b>LABOR COST UTI</b>		
			<b>DIRECT COST UTI</b>		

ITEM CODE	WORK DESCRIPTION AND SCOPE OF WORKS	QTY	UNIT	UNIT COST	TOTAL COST
-----------	-------------------------------------	-----	------	-----------	------------

SUMMARY

ITEM CODE	WORK DESCRIPTION AND SCOPE OF WORKS	AMOUNT
OGR	OTHER GENERAL REQUIREMENTS	₱
	TOTAL ESTIMATED COST A	₱
GR SW CWS AW EW UTI	GENERAL REQUIREMENTS SITE WORKS CIVIL / STRUCTURAL WORKS ARCHITECTURAL WORKS ELECTRICAL WORKS UTILITY AND ANCILLARY WORKS	₱
<b>NOTE:</b>  Stricly enforce health protocols relative to latest applicable DPWH Memorandum	TOTAL DIRECT COST B	₱
	Overhead, Contingencies and Miscellaneous Expenses (OCM)	
	Profit	
	TOTAL ESTIMATED COST B	₱
	TOTAL ESTIMATED COST A	₱
	TOTAL ESTIMATED COST B	₱
	TOTAL ESTIMATED COST	₱
	VAT	
	TOTAL APPROVED BUDGET FOR THE CONTRACT	₱

## ***Section IX. Checklist of Technical and Financial Documents***

### **Notes on the Checklist of Technical and Financial Documents**

The prescribed documents in the checklist are mandatory to be submitted in the Bid, but shall be subject to the following:

- a. GPPB Resolution No. 09-2020 on the efficient procurement measures during a State of Calamity or other similar issuances that shall allow the use of alternate documents in lieu of the mandated requirements; or
- b. any subsequent GPPB issuances adjusting the documentary requirements after the effectivity of the adoption of the PBDs.

The BAC shall be checking the submitted documents of each Bidder against this checklist to ascertain if they are all present, using a non-discretionary “pass/fail” criterion pursuant to Section 30 of the 2016 revised IRR of RA No. 9184.

# Checklist of Technical and Financial Documents

## I. TECHNICAL COMPONENT ENVELOPE

### *Class “A” Documents*

#### Legal Documents

- ☐ (a) Valid PhilGEPS Registration Certificate (Platinum Membership) (all pages);  
**and**
- ☐ (b) Registration certificate from Securities and Exchange Commission (SEC), Department of Trade and Industry (DTI) for sole proprietorship, or Cooperative Development Authority (CDA) for cooperatives or its equivalent document;  
**and**
- ☐ (c) Mayor’s or Business permit issued by the city or municipality where the principal place of business of the prospective bidder is located, or the equivalent document for Exclusive Economic Zones or Areas;  
**and**
- ☐ (e) Tax clearance per E.O. No. 398, s. 2005, as finally reviewed and approved by the Bureau of Internal Revenue (BIR).

#### Technical Documents

- ☐ (f) Statement of the prospective bidder of all its ongoing government and private contracts, including contracts awarded but not yet started, if any, whether similar or not similar in nature and complexity to the contract to be bid (*please see attached prescribed forms required by the QC – BAC for Infrastructure and Consultancy*); **and**
- ☐ (g) Statement of the bidder’s Single Largest Completed Contract (SLCC) similar to the contract to be bid, except under conditions provided under the rules with an attached Notice of Award, Notice to Proceed, Contract and Certificate of Acceptance (*please see attached prescribed form required by the QC – BAC for Infrastructure and Consultancy*); **and**
- ☐ (h) Philippine Contractors Accreditation Board (PCAB) License;  
**or**  
Special PCAB License in case of Joint Ventures;  
**and** registration for the type and cost of the contract to be bid; **and**
- ☐ (i) Original copy of Bid Security. If in the form of a Surety Bond, submit also a certification issued by the Insurance Commission;  
**or**  
Original copy of Notarized Bid Securing Declaration; **and**
- ☐ (j) Project Requirements, which shall include the following:
  - ☐ a. Organizational chart for the contract to be bid;
  - ☐ b. List of contractor’s key personnel (*e.g.*, Project Manager, Project Engineers, Materials Engineers, and Foremen), to be assigned to the contract to be bid, with their complete qualification and experience data (*please see attached prescribed form required by the QC – BAC for Infrastructure and Consultancy*);
  - ☐ c. List of contractor’s major equipment units, which are owned, leased, and/or under purchase agreements, supported by proof of ownership or certification of availability of equipment from the equipment

lessor/vendor for the duration of the project, as the case may be (*please see attached prescribed form required by the QC – BAC for Infrastructure and Consultancy*); **and**

- ☐ (k) Original duly signed Omnibus Sworn Statement (OSS); **and** if applicable, Original Notarized Secretary's Certificate in case of a corporation, partnership, or cooperative; or Original Special Power of Attorney of all members of the joint venture giving full power and authority to its officer to sign the OSS and do acts to represent the Bidder.

Additional Technical Requirements:

- ☐ • Certificate of Site Inspection or Affidavit of Site Inspection as part of Omnibus Sworn Statement
- ☐ • Affidavit of Undertaking for Key Personnel and Equipment (*please see attached prescribed form required by the QC – BAC for Infrastructure and Consultancy*)
- ☐ • Equipment Utilization Schedule
- ☐ • Manpower Schedule
- ☐ • Construction Schedule and S-Curve
- ☐ • PERT-CMP
- ☐ • Construction Methods

Financial Documents

- ☐ (l) The prospective bidder's audited financial statements, showing, among others, the prospective bidder's total and current assets and liabilities, stamped "received" by the BIR or its duly accredited and authorized institutions, for the preceding calendar year which should not be earlier than two (2) years from the date of bid submission; **and**
- ☐ (m) The prospective bidder's computation of Net Financial Contracting Capacity (NFCC) (*please see attached prescribed form required by the QC – BAC for Infrastructure and Consultancy*).

***Class "B" Documents***

- ☐ (n) If applicable, duly signed joint venture agreement (JVA) in accordance with RA No. 4566 and its IRR in case the joint venture is already in existence; **or** duly notarized statements from all the potential joint venture partners stating that they will enter into and abide by the provisions of the JVA in the instance that the bid is successful.

**II. FINANCIAL COMPONENT ENVELOPE**

- ☐ (o) Original of duly signed and accomplished Financial Bid Form; **and**

Other documentary requirements under RA No. 9184

- ☐ (p) Original of duly signed Bid Prices in the Bill of Quantities; **and**
- ☐ (q) Duly accomplished Detailed Estimates Form, including a summary sheet indicating the unit prices of construction materials, labor rates, and equipment rentals used in coming up with the Bid; **and**
- ☐ (r) Cash Flow by Quarter.

**Bid Form for the Procurement of Infrastructure Projects**  
*[shall be submitted with the Bid]*

---

**BID FORM**

Date : \_\_\_\_\_  
Project Identification No. : \_\_\_\_\_

To: *[name and address of Procuring Entity]*

Having examined the Philippine Bidding Documents (PBDs) including the Supplemental or Bid Bulletin Numbers *[insert numbers]*, the receipt of which is hereby duly acknowledged, we, the undersigned, declare that:

- a. We have no reservation to the PBDs, including the Supplemental or Bid Bulletins, for the Procurement Project: *[insert name of contract]*;
- b. We offer to execute the Works for this Contract in accordance with the PBDs;
- c. The total price of our Bid in words and figures, excluding any discounts offered below is: *[insert information]*;
- d. The discounts offered and the methodology for their application are: *[insert information]*;
- e. The total bid price includes the cost of all taxes, such as, but not limited to: *[specify the applicable taxes, e.g. (i) value added tax (VAT), (ii) income tax, (iii) local taxes, and (iv) other fiscal levies and duties]*, which are itemized herein and reflected in the detailed estimates,
- f. Our Bid shall be valid within the a period stated in the PBDs, and it shall remain binding upon us at any time before the expiration of that period;
- g. If our Bid is accepted, we commit to obtain a Performance Security in the amount of *[insert percentage amount]* percent of the Contract Price for the due performance of the Contract, or a Performance Securing Declaration in lieu of the the allowable forms of Performance Security, subject to the terms and conditions of issued GPPB guidelines<sup>1</sup> for this purpose;
- h. We are not participating, as Bidders, in more than one Bid in this bidding process, other than alternative offers in accordance with the Bidding Documents;
- i. We understand that this Bid, together with your written acceptance thereof included in your notification of award, shall constitute a binding contract between us, until a formal Contract is prepared and executed; and
- j. We understand that you are not bound to accept the Lowest Calculated Bid or any other Bid that you may receive.

---

<sup>1</sup> currently based on GPPB Resolution No. 09-2020

- k. We likewise certify/confirm that the undersigned, is the duly authorized representative of the bidder, and granted full power and authority to do, execute and perform any and all acts necessary to participate, submit the bid, and to sign and execute the ensuing contract for the [Name of Project] of the [Name of the Procuring Entity].
- l. We acknowledge that failure to sign each and every page of this Bid Form, including the Bill of Quantities, shall be a ground for the rejection of our bid.

Name: \_\_\_\_\_

Legal Capacity: \_\_\_\_\_

Signature: \_\_\_\_\_

Duly authorized to sign the Bid for and behalf of: \_\_\_\_\_

Date: \_\_\_\_\_

## **Bid Securing Declaration Form**

*[shall be submitted with the Bid if bidder opts to provide this form of bid security]*

---

REPUBLIC OF THE PHILIPPINES)

CITY OF \_\_\_\_\_) S.S.

### **BID SECURING DECLARATION** **Project Identification No.: *[Insert number]***

To: *[Insert name and address of the Procuring Entity]*

I/We, the undersigned, declare that:

1. I/We understand that, according to your conditions, bids must be supported by a Bid Security, which may be in the form of a Bid Securing Declaration.
2. I/We accept that: (a) I/we will be automatically disqualified from bidding for any procurement contract with any procuring entity for a period of two (2) years upon receipt of your Blacklisting Order; and, (b) I/we will pay the applicable fine provided under Section 6 of the Guidelines on the Use of Bid Securing Declaration, within fifteen (15) days from receipt of the written demand by the procuring entity for the commission of acts resulting to the enforcement of the bid securing declaration under Sections 23.1(b), 34.2, 40.1 and 69.1, except 69.1(f), of the IRR of RA No. 9184; without prejudice to other legal action the government may undertake.
3. I/We understand that this Bid Securing Declaration shall cease to be valid on the following circumstances:
  - a. Upon expiration of the bid validity period, or any extension thereof pursuant to your request;
  - b. I am/we are declared ineligible or post-disqualified upon receipt of your notice to such effect, and (i) I/we failed to timely file a request for reconsideration or (ii) I/we filed a waiver to avail of said right; and
  - c. I am/we are declared the bidder with the Lowest Calculated Responsive Bid, and I/we have furnished the performance security and signed the Contract.

IN WITNESS WHEREOF, I/We have hereunto set my/our hand/s this \_\_\_\_ day of *[month]* *[year]* at *[place of execution]*.

*[Insert NAME OF BIDDER OR ITS AUTHORIZED REPRESENTATIVE]*

*[Insert signatory's legal capacity]*

Affiant

**[Jurat]**

*[Format shall be based on the latest Rules on Notarial Practice]*



**Omnibus Sworn Statement (Revised)**  
*[shall be submitted with the Bid]*

---

REPUBLIC OF THE PHILIPPINES )  
CITY/MUNICIPALITY OF \_\_\_\_\_ ) S.S.

**AFFIDAVIT**

I, [Name of Affiant], of legal age, [Civil Status], [Nationality], and residing at [Address of Affiant], after having been duly sworn in accordance with law, do hereby depose and state that:

1. *[Select one, delete the other:]*

*[If a sole proprietorship:]* I am the sole proprietor or authorized representative of [Name of Bidder] with office address at [address of Bidder];

*[If a partnership, corporation, cooperative, or joint venture:]* I am the duly authorized and designated representative of [Name of Bidder] with office address at [address of Bidder];

2. *[Select one, delete the other:]*

*[If a sole proprietorship:]* As the owner and sole proprietor, or authorized representative of [Name of Bidder], I have full power and authority to do, execute and perform any and all acts necessary to participate, submit the bid, and to sign and execute the ensuing contract for [Name of the Project] of the [Name of the Procuring Entity], as shown in the attached duly notarized Special Power of Attorney;

*[If a partnership, corporation, cooperative, or joint venture:]* I am granted full power and authority to do, execute and perform any and all acts necessary to participate, submit the bid, and to sign and execute the ensuing contract for [Name of the Project] of the [Name of the Procuring Entity], as shown in the attached [state title of attached document showing proof of authorization (e.g., duly notarized Secretary's Certificate, Board/Partnership Resolution, or Special Power of Attorney, whichever is applicable)];

3. [Name of Bidder] is not "blacklisted" or barred from bidding by the Government of the Philippines or any of its agencies, offices, corporations, or Local Government Units, foreign government/foreign or international financing institution whose blacklisting rules have been recognized by the Government Procurement Policy Board, **by itself or by relation, membership, association, affiliation, or controlling interest with another blacklisted person or entity as defined and provided for in the Uniform Guidelines on Blacklisting;**

4. Each of the documents submitted in satisfaction of the bidding requirements is an authentic copy of the original, complete, and all statements and information provided therein are true and correct;

5. [Name of Bidder] is authorizing the Head of the Procuring Entity or its duly authorized representative(s) to verify all the documents submitted;

6. *[Select one, delete the rest:]*

*[If a sole proprietorship:]* The owner or sole proprietor is not related to the Head of the Procuring Entity, members of the Bids and Awards Committee (BAC), the Technical Working Group, and the BAC Secretariat, the head of the Project Management Office or the end-user unit, and the project consultants by consanguinity or affinity up to the third civil degree;

*[If a partnership or cooperative:]* None of the officers and members of [Name of Bidder] is related to the Head of the Procuring Entity, members of the Bids and Awards Committee (BAC), the Technical Working Group, and the BAC Secretariat, the head of the Project

Management Office or the end-user unit, and the project consultants by consanguinity or affinity up to the third civil degree;

*[If a corporation or joint venture:]* None of the officers, directors, and controlling stockholders of *[Name of Bidder]* is related to the Head of the Procuring Entity, members of the Bids and Awards Committee (BAC), the Technical Working Group, and the BAC Secretariat, the head of the Project Management Office or the end-user unit, and the project consultants by consanguinity or affinity up to the third civil degree;

7. *[Name of Bidder]* complies with existing labor laws and standards; and
8. *[Name of Bidder]* is aware of and has undertaken the responsibilities as a Bidder in compliance with the Philippine Bidding Documents, which includes:
  - a. Carefully examining all of the Bidding Documents;
  - b. Acknowledging all conditions, local or otherwise, affecting the implementation of the Contract;
  - c. Making an estimate of the facilities available and needed for the contract to be bid, if any; and
  - d. Inquiring or securing Supplemental/Bid Bulletin(s) issued for the *[Name of the Project]*.
9. *[Name of Bidder]* did not give or pay directly or indirectly, any commission, amount, fee, or any form of consideration, pecuniary or otherwise, to any person or official, personnel or representative of the government in relation to any procurement project or activity.
10. **In case advance payment was made or given, failure to perform or deliver any of the obligations and undertakings in the contract shall be sufficient grounds to constitute criminal liability for Swindling (Estafa) or the commission of fraud with unfaithfulness or abuse of confidence through misappropriating or converting any payment received by a person or entity under an obligation involving the duty to deliver certain goods or services, to the prejudice of the public and the government of the Philippines pursuant to Article 315 of Act No. 3815 s. 1930, as amended, or the Revised Penal Code.**
11. We pledge that the project will be completed in accordance and congruency with the approved plans and programs.

**IN WITNESS WHEREOF**, I have hereunto set my hand this \_\_\_ day of \_\_\_\_\_ 20\_\_ at \_\_\_\_\_, Philippines.

*[Insert NAME OF BIDDER OR ITS AUTHORIZED REPRESENTATIVE]*

*[Insert signatory's legal capacity]*  
Affiant

**[Jurat]**

*[Format shall be based on the latest Rules on Notarial Practice]*

## Contract Agreement Form for the Procurement of Infrastructure Projects (Revised)

*[not required to be submitted with the Bid, but it shall be submitted within ten (10) days after receiving the Notice of Award]*

---

### CONTRACT AGREEMENT

THIS AGREEMENT, made this *[insert date]* day of *[insert month]*, *[insert year]* between *[name and address of PROCURING ENTITY]* (hereinafter called the "Entity") and *[name and address of Contractor]* (hereinafter called the "Contractor").

WHEREAS, the Entity is desirous that the Contractor execute *[name and identification number of contract]* (hereinafter called "the Works") and the Entity has accepted the Bid for *[contract price in words and figures in specified currency]* by the Contractor for the execution and completion of such Works and the remedying of any defects therein.

NOW THIS AGREEMENT WITNESSETH AS FOLLOWS:

1. In this Agreement, words and expressions shall have the same meanings as are respectively assigned to them in the Conditions of Contract hereinafter referred to.
2. The following documents as required by the 2016 revised Implementing Rules and Regulations of Republic Act No. 9184 shall be deemed to form and be read and construed as part of this Agreement, viz.:
  - a. Philippine Bidding Documents (PBDs);
    - i. Drawings/Plans;
    - ii. Specifications;
    - iii. Bill of Quantities;
    - iv. General and Special Conditions of Contract;
    - v. Supplemental or Bid Bulletins, if any;
  - b. Winning bidder's bid, including the Eligibility requirements, Technical and Financial Proposals, and all other documents or statements submitted;  
  
Bid form, including all the documents/statements contained in the Bidder's bidding envelopes, as annexes, and all other documents submitted (e.g., Bidder's response to request for clarifications on the bid), including corrections to the bid, if any, resulting from the Procuring Entity's bid evaluation;
  - c. Performance Security;
  - d. Notice of Award of Contract and the Bidder's conforme thereto; and
  - e. Other contract documents that may be required by existing laws and/or the Procuring Entity concerned in the PBDs. **Winning bidder agrees that additional contract documents or information prescribed by the GPPB that are subsequently required for submission after the contract execution, such as the Notice to Proceed, Variation Orders, and Warranty Security, shall likewise form part of the Contract.**
3. In consideration for the sum of *[total contract price in words and figures]* or such other sums as may be ascertained, *[Named of the bidder]* agrees to *[state the object of the contract]* in accordance with his/her/its Bid.

4. The *[Name of the procuring entity]* agrees to pay the above-mentioned sum in accordance with the terms of the Bidding.

IN WITNESS whereof the parties thereto have caused this Agreement to be executed the day and year first before written.

*[Insert Name and Signature] [Insert Name and Signature]*

*[Insert Signatory's Legal Capacity] [Insert Signatory's Legal Capacity]*

*for: for:*

*[Insert Procuring Entity] [Insert Name of Supplier]*

**Acknowledgment**

*[Format shall be based on the latest Rules on Notarial Practice]*

LIST OF ALL ON-GOING GOVERNMENT AND PRIVATE CONTRACTS

NAME OF CONTRACTOR: \_\_\_\_\_

PROJECT TITLE (Name of the Contract) & EXACT PROJECT LOCATION	DATE OF CONTRACT	CONTRACT DURATION	PROJECT OWNER & POSTAL ADDRESS	NATURE OF WORK	CONTRACTOR'S ROLE (SOLE CONTRACTOR, SUBCONTRACTOR, PARTNER IN A JV) and PERCENTAGE OF PARTICIPATION	TOTAL CONTRACT VALUE AT AWARD	DATE OF COMPLETION or ESTIMATED COMPLETION TIME	TOTAL CONTRACT VALUE AT COMPLETION IF APPLICABLE	PERCENTAGE		VALUE OF OUTSTANDING WORKS (IN PHP)
									ACTUAL ACCOMPLISHMENT	PLANNED ACCOMPLISHMENT	

PHOTOCOPY ADDITIONAL FORMS, IF NECESSARY

Page \_\_\_\_\_ of \_\_\_\_\_



SINGLE LARGEST COMPLETED CONTRACT SIMILAR TO THE CONTRACT TO BE BID

NAME OF CONTRACTOR: \_\_\_\_\_

PROJECT TITLE: \_\_\_\_\_

PROJECT TITLE (Name of the Contract) & EXACT PROJECT LOCATION	DATE OF CONTRACT	CONTRACT DURATION	PROJECT OWNER & POSTAL ADDRESS	NATURE OF WORK	CONTRACTOR'S ROLE (SOLE CONTRACTOR, SUBCONTRACTOR, PARTNER IN A JV) and PERCENTAGE OF PARTICIPATION	TOTAL CONTRACT VALUE AT AWARD	DATE OF COMPLETION or ESTIMATED COMPLETION TIME	TOTAL CONTRACT VALUE AT COMPLETION IF APPLICABLE

PHOTOCOPY ADDITIONAL FORMS, IF NECESSARY

Page \_\_\_\_\_ of \_\_\_\_\_

**LIST OF MAJOR EQUIPMENT TO BE USED FOR THE PROJECT**

**NAME OF CONTRACTOR:** \_\_\_\_\_

**PROJECT TITLE:** \_\_\_\_\_

TYPE	DESCRIPTION / CAPACITY	SERIAL NO.	YEAR ACQUIRED	PRESENT LOCATION (SPECIFIC ADDRESS)	STATUS OF AVAILABILITY (OWNED/LEASED)



**A. LIST OF KEY CONSTRUCTION PERSONNEL TO BE ASSIGNED TO THE PROJECT**

**NAME OF CONTRACTOR:** \_\_\_\_\_

**PROJECT TITLE:** \_\_\_\_\_

NAME	POSITION	AGE	EDUCATIONAL ATTAINMENT	TYPE OF CONSTRUCTION EXPERIENCE	NO.OF YEARS WITH THE CONTRACTOR	PROFESSION	PRC NO.

## COMPUTATION OF NET FINANCIAL CONTRACTING CAPACITY (NFCC)

NAME OF BIDDER: \_\_\_\_\_

CURRENT ASSETS*		PHP	_____
(LESS) CURRENT LIABILITIES*	(LESS)	PHP	_____
NETWORTH		PHP	_____
NETWORTH x 15	x 15	PHP	_____
(LESS) VALUE OF ALL OUTSTANDING ON-GOING CONTRACTS**	(LESS)	PHP	_____
(LESS) VALUE OF ALL AWARDED BUT NOT YET STARTED CONTRACTS AS OF DATE**	(LESS)	PHP	_____
<b>NET FINANCIAL CONTRACTING CAPACITY</b>		PHP	_____

NOTES:      \* CURRENT ASSETS AND LIABILITIES BASED ON AUDITED FINANCIAL STATEMENT FOR THE PRECEDING CALENDAR YEAR SUBMITTED TO B.I.R.

             \*\* BASED ON LIST OF ON-GOING AND AWRDED BUT NOT VEY STARTED CONTRACTS SUBMITTED

REPUBLIC OF THE PHILIPPINES)

\_\_\_\_\_ ) S.S.

### AFFIDAVIT OF UNDERTAKING

I, \_\_\_\_\_ of legal age, Filipino, \_\_\_\_\_ **[OFFICER OR REPRESENTATIVE]**

with office address at \_\_\_\_\_ after having been duly sworn to in accordance with law, hereby voluntary depose and state:

That I am duly authorized representative of the **[Name of Bidder]** to execute this undertaking as evidenced by Secretary's Certificate and Board Resolution.

That **[Name of Bidder]** bidding for the (Name of Project)

That relative to the aforementioned Project, the **[Name of Bidder]** hereby undertake that the equipment to be use and the key personnel to be assign shall exclusively be used and will only perform to the said project until its completion.

That I am executing this affidavit to attest to the truth of the foregoing and in compliance with the submission of the technical requirements for the public bidding of the said project.

IN WITNESS HEREOF, I have hereunto signed my name below this \_\_\_\_\_ day of \_\_\_\_\_ at \_\_\_\_\_.

AFFIANT FURTHER SAYETH NAUGHT.

\_\_\_\_\_  
Affiant

SUBSCRIBED AND SWORN TO BEFORE ME this \_\_\_\_\_ day of \_\_\_\_\_  
in \_\_\_\_\_

affiant exhibiting to me his/her \_\_\_\_\_ issued at \_\_\_\_\_  
on \_\_\_\_\_.

Doc. No. ;  
Page No. ;  
Book No. ;  
Series of 2020

\_\_\_\_\_  
Notary Public

