

NOTE:

1. REWIRING AND REPLACEMENT OF OUTLETS
2. PANEL BOARD TO BE REPLACED

1 GROUND FLOOR POWER LAYOUT (SB HALL BUILDING)

SCALE 1:160M



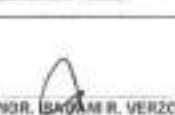



NOTE:

1. REWIRING AND REPLACEMENT OF OUTLETS
2. PANEL BOARD TO BE REPLACED

2 SECOND FLOOR POWER LAYOUT (SB HALL BUILDING)

SCALE 1:160M

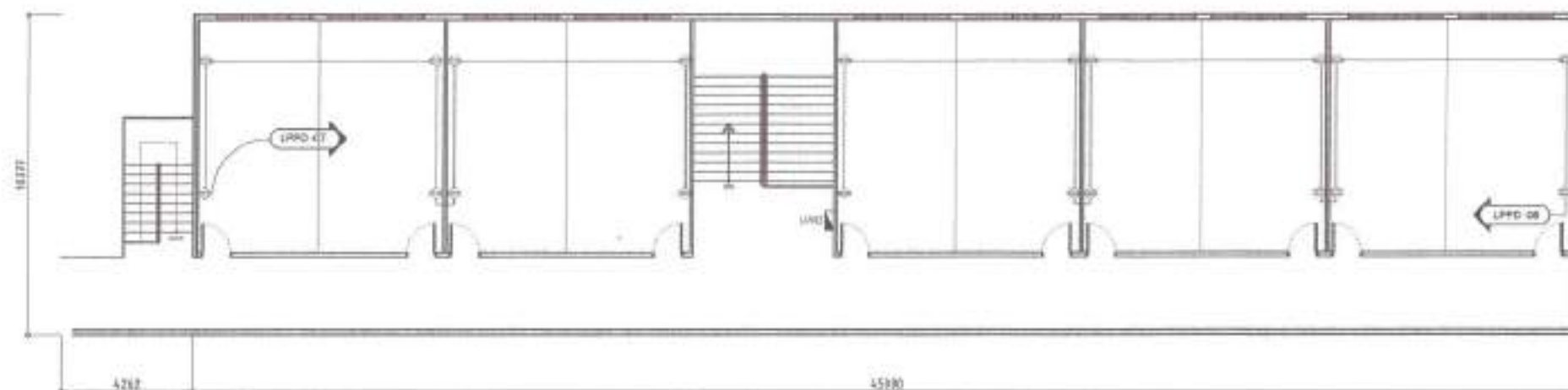
 <p>Republika ng Pilipinas Lungsod ng Quezon CITY ENGINEERING DEPARTMENT</p>	<p>PROJECT TITLE: PROPOSED REHABILITATION AND UPGRADING OF ELECTRICAL SYSTEM AT BAGONG SILANGAN ELEMENTARY SCHOOL</p> <p>LOCATION: BRGY. BAGONG SILANGAN, DISTRICT 3, QUEZON CITY</p>	<p>DESIGNED BY: DATE: 02/11/22 CHECKED BY: REVISION NO.:</p>	<p>SUBMITTED BY:  ENGR. CED S. DEL ROSARIO HEAD, PLANNING & PROGRAMMING DIVISION</p>	<p>RECOMMENDING APPROVAL:  ENGR. BAYANI R. VERZOSA, JR. DCC, CITY ENGINEERING DEPARTMENT</p>	<p>APPROVED BY:  HON. MA. JOBERINA O. BELMONTE CITY MAYOR</p>	<p>SHEET CONTENT: SILMONTE BUILDING GROUND FLOOR POWER LAYOUT SILMONTE BUILDING SECOND FLOOR POWER LAYOUT</p>	<p>SHEET NO. EL-12 28.40</p>
--	--	--	---	---	--	---	--



- NOTE:
1. REPAIRING AND REPLACEMENT OF OUTLETS
 2. PANEL BOARD TO BE REPLACED

1 THIRD FLOOR POWER LAYOUT
(SB HALL BUILDING)

SCALE 1:150M.



- NOTE:
1. REPAIRING AND REPLACEMENT OF OUTLETS
 2. PANEL BOARD TO BE REPLACED

2 FOURTH FLOOR POWER LAYOUT
(SB HALL BUILDING)

SCALE 1:150M.



Republika ng Pilipinas
Lungsod ng Quezon
CITY ENGINEERING DEPARTMENT

PROJECT TITLE:
**PROPOSED REHABILITATION AND
UPGRADING OF ELECTRICAL SYSTEM AT
BAGONG SILANGAN ELEMENTARY
SCHOOL**

LOCATION:
BRGY. ANSONS ISLAND, DISTRICT 3, QUEZON CITY

DRAWN BY:
DATE: 02.21.20
CHECKED BY:
REVISION NO.:

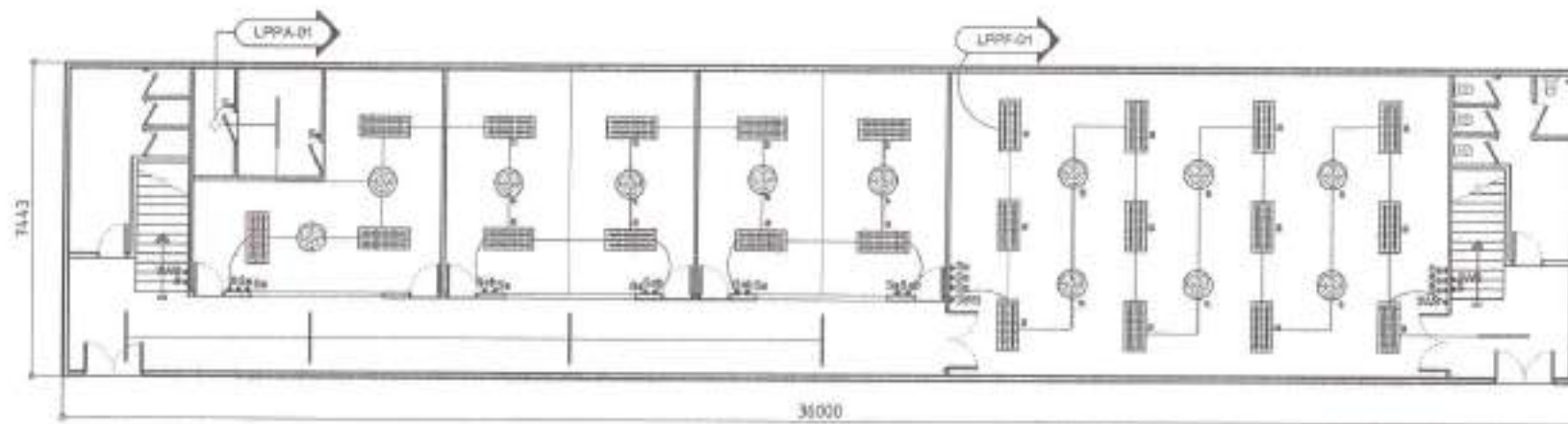
SUBMITTED BY:
ENGR. LEO S. DEL ROSARIO
HEAD, PLANNING AND DESIGN DIVISION

RECOMMENDING APPROVAL:
ENGR. ISADAMOR VERZOSA, JR.
D.O. CITY ENGINEERING DEPARTMENT

APPROVED BY:
HON. RA. JOSEFINA G. BELMONTE
CITY MAYOR

SHEET CONTENT:
BELMONTE BUILDING
THIRD FLOOR
POWER LAYOUT
BELMONTE BUILDING
FOURTH FLOOR
POWER LAYOUT

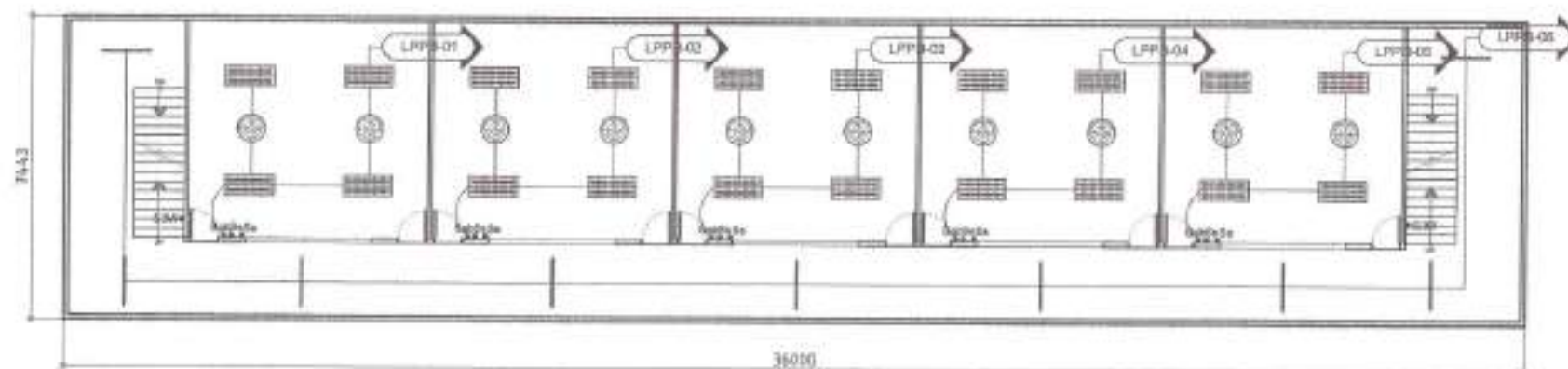
SHEET NO.
EL-13
29 40



NOTE:
1. REWIRING AND REPLACEMENT OF LIGHTING
FIXTURES AND WIRING DEVICES

1 GROUND FLOOR LIGHTING LAYOUT
(LIBAN BUILDING)

SCALE 1:125M



NOTE:
1. REWIRING AND REPLACEMENT OF LIGHTING
FIXTURES AND WIRING DEVICES

2 SECOND FLOOR LIGHTING LAYOUT
(LIBAN BUILDING)

SCALE 1:125M



Republika ng Pilipinas
Lungsod ng Quezon
CITY ENGINEERING DEPARTMENT

PROJECT TITLE:
**PROPOSED REHABILITATION AND
UPGRADING OF ELECTRICAL SYSTEM AT
BAGONG SILANGAN ELEMENTARY
SCHOOL**

LOCATION:
BRGY. BAGONG SILANGAN, DISTRICT 2, QUEZON CITY

DRAWN BY: *[Signature]*
DATE: 05/31/22
CHECKED BY: *[Signature]*
REVISION NO.:

SUBMITTED BY:
[Signature]
ENGR. LEO S. DEL ROSARIO
HEAD, PLANNING & MANAGEMENT DIVISION

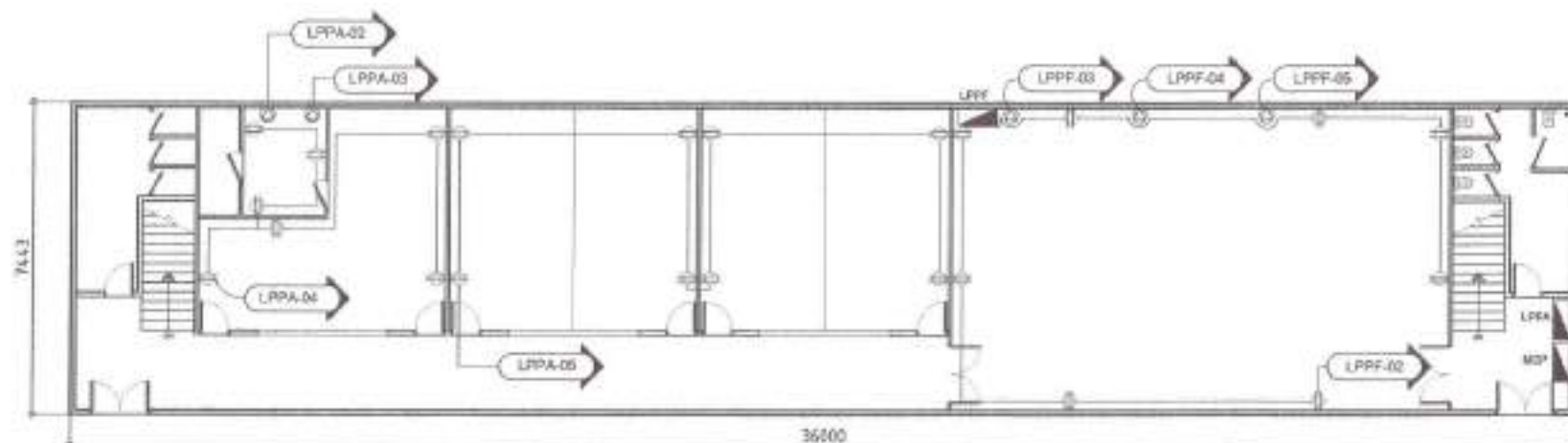
SUPPLEMENTARY APPROVAL:
[Signature]
ENGR. ISAGAN P. VERZOSA, JR.
CH. CITY ENGINEERING DIVISION

APPROVED BY:
[Signature]
HON. MA. JOSEFINA D. BELMONTE
CITY ENGINEER

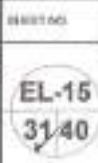
SHEET CONTENT:
LIBAN BUILDING GROUND
FLOOR LIGHTING LAYOUT
LIBAN BUILDING SECOND
FLOOR LIGHTING LAYOUT

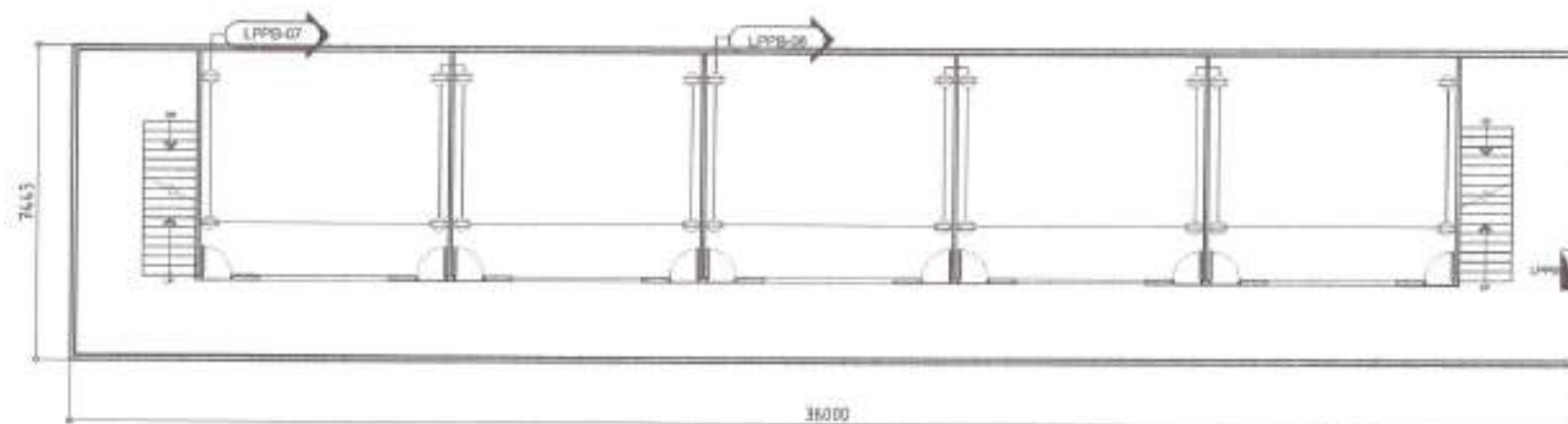
SHEET NO.
EL-14
30/40

SCALE 1:125M



SCALE 1-150.



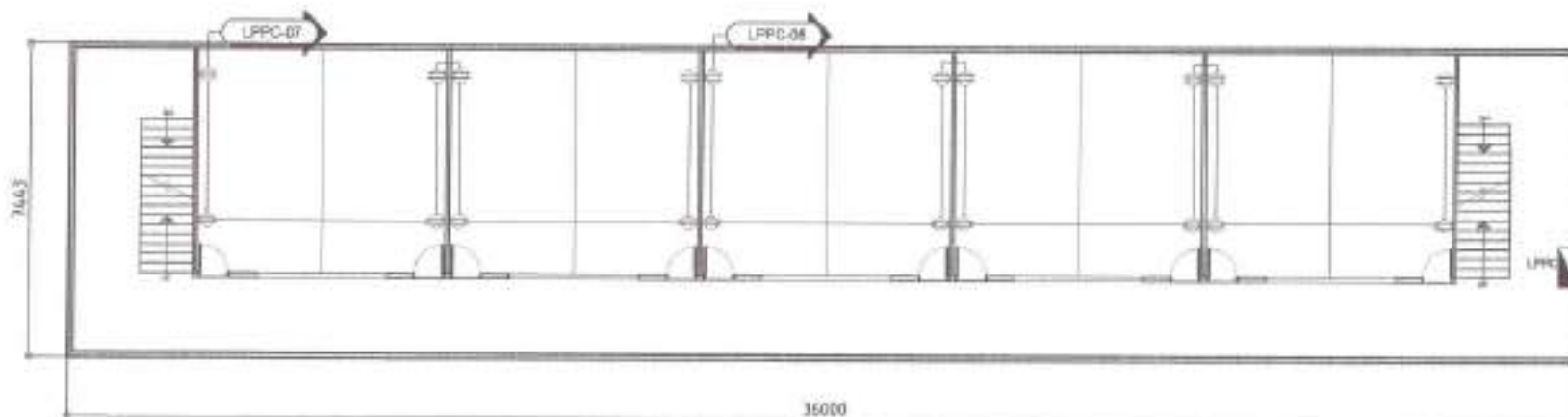


NOTE:

1. REWIRING AND REPLACEMENT OF OUTLETS
2. PANEL BOARD TO BE REPLACED

1 SECOND FLOOR POWER LAYOUT
(LIBAN BUILDING)

SCALE 1:125M



NOTE:

1. REWIRING AND REPLACEMENT OF OUTLETS
2. PANEL BOARD TO BE REPLACED

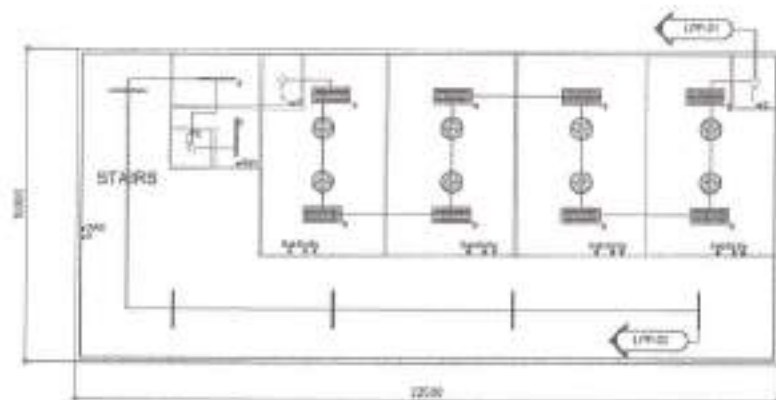
2 THIRD FLOOR POWER LAYOUT
(LIBAN BUILDING)

SCALE 1:125M



Republika ng Pilipinas
Lungsod ng Quezon
CITY ENGINEERING DEPARTMENT

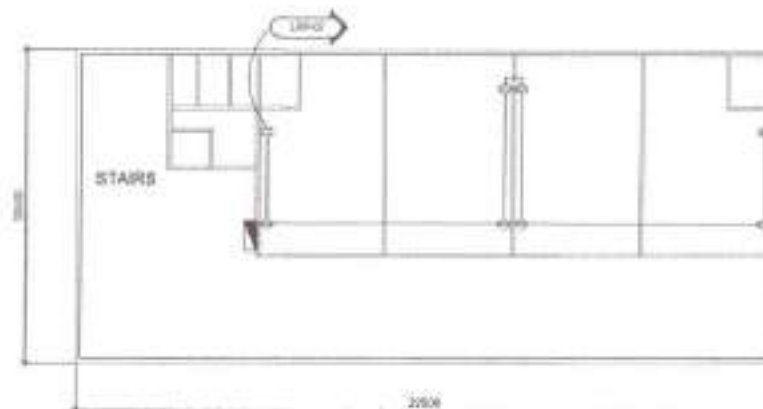
PROJECT TITLE:	DRAWN BY:	SUBMITTED BY:	RECOMMENDING APPROVAL:	APPROVED BY:	SHEET CONTENT	SHEET NO.
PROPOSED REHABILITATION AND UPGRADING OF ELECTRICAL SYSTEM AT BAGONG SILANGAN ELEMENTARY SCHOOL ✓	DWT - 06/11/22 DRE/00000000	ENGR. LEO S. DEL ROSARIO (ELECTRICAL ENGINEERING)	ENGR. MARICAR R. VERZOSA, JR. (CITY ENGINEERING DEPARTMENT)	HON. RA. JOSEFINA D. BELMONTE CITY MAYOR	LIBAN BUILDING SECOND FLOOR POWER LAYOUT LIBAN BUILDING THIRD FLOOR POWER LAYOUT	EL-16 32 40
LOCATION: BAGONG SILANGAN, DISTRICT 2, QUEZON CITY ✓	REVISION NO.:					



NOTE:
1. REWIRING AND REPLACEMENT OF LIGHTING
FIXTURES AND WIRING DEVICES

1 GROUND FLOOR LIGHTING LAYOUT
(CASTELO BUILDING 1)

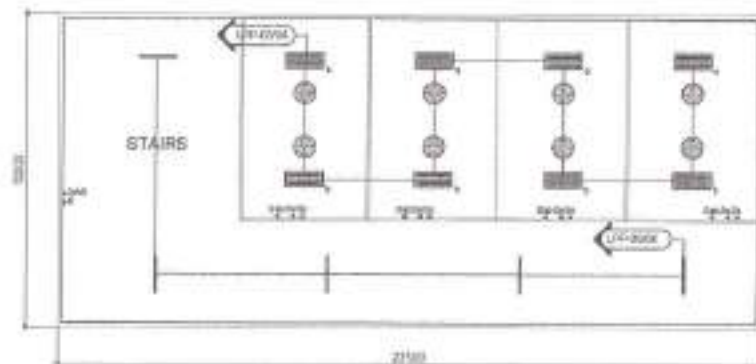
SCALE 1:175M



NOTE:
1. REWIRING AND REPLACEMENT OF OUTLETS

3 GROUND FLOOR POWER LAYOUT
(CASTELO BUILDING 1)

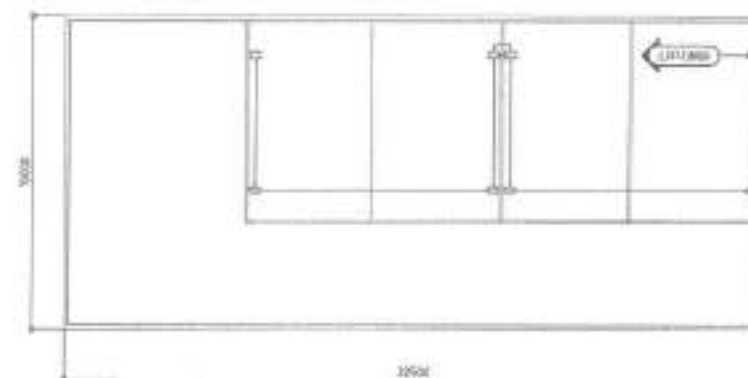
SCALE 1:150M



NOTE:
1. REWIRING AND REPLACEMENT OF LIGHTING
FIXTURES AND WIRING DEVICES

2 SECOND TO THIRD FLOOR LIGHTING LAYOUT
(CASTELO BUILDING 1)

SCALE 1:150M



NOTE:
1. REWIRING AND REPLACEMENT OF OUTLETS

4 SECOND TO THIRD FLOOR POWER LAYOUT
(CASTELO BUILDING 1)

SCALE 1:150M



Republika ng Pilipinas
Lungsod ng Quezon
CITY ENGINEERING DEPARTMENT

PROJECT TITLE:
**PROPOSED REHABILITATION AND
UPGRADING OF ELECTRICAL SYSTEM AT
BAGONG SILANGAN ELEMENTARY
SCHOOL**

LOCATION:
BAGONG SILANGAN, DISTRICT 2, QUEZON CITY

DRAWN BY: *[Signature]*
DATE: 05/31/22
CHECKED BY: *[Signature]*

REVISION NO.:

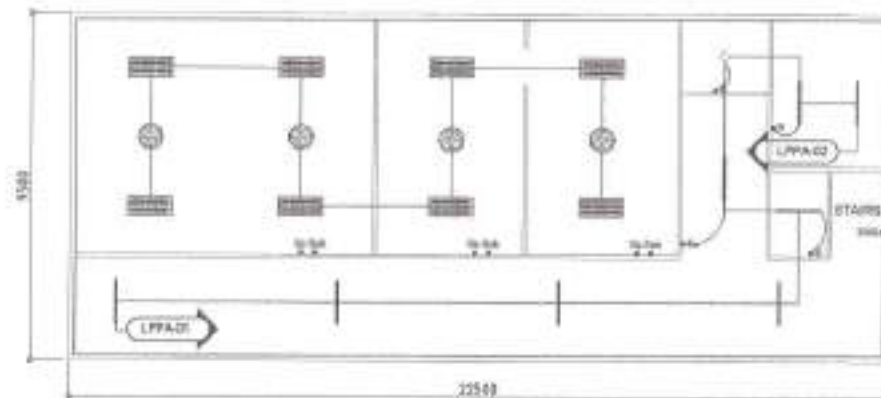
SUBMITTED BY: *[Signature]*
ENGR. LEO S. DEL ROSARIO
HEAD - PLANNING & RECOMMENDING DIVISION

RECOMMENDED APPROVAL: *[Signature]*
ENGR. ISAGAN R. VERZOSA, JR.
DEPT. CITY ENGINEERING DEPARTMENT

APPROVED BY: *[Signature]*
HON. MA. JOSEFINA G. BELMONTTE
CITY MAYOR

SHEET CONTENT:
CASTELO 1
GROUND FLOOR
LIGHTING LAYOUT AND
POWER LAYOUT
SECOND FLOOR
LIGHTING LAYOUT AND
POWER LAYOUT

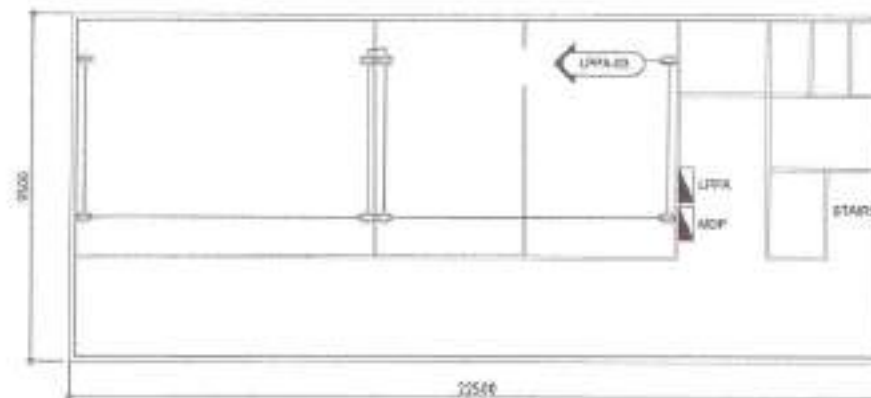
SHEET NO.
EL-17
33 40



NOTE:
1. REPAIRING AND REPLACEMENT OF LIGHTING
FIXTURES AND WIRING DEVICES

1 GROUND FLOOR LIGHTING LAYOUT (CASTELO BUILDING 2)

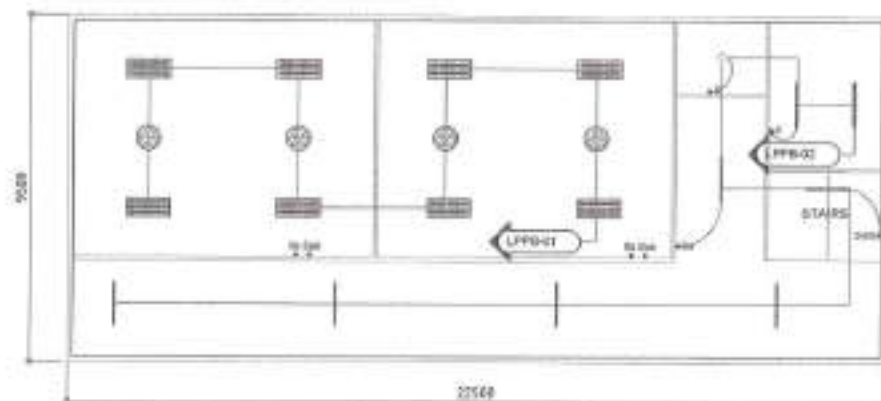
SCALE 1:100M



NOTE:
1. REPAIRING AND REPLACEMENT OF OUTLETS

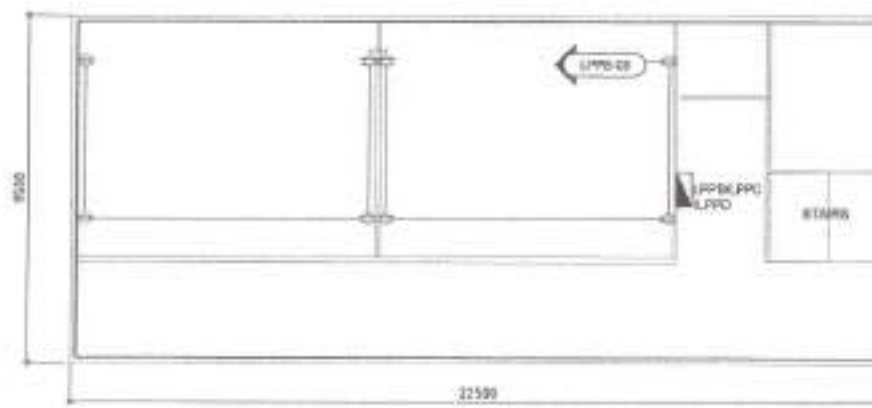
3 GROUND FLOOR POWER LAYOUT (CASTELO BUILDING 2)

SCALE 1:100M



2 SECOND TO FOURTH FLOOR LIGHTING LAYOUT (CASTELO BUILDING 2)

SCALE 1:100M



NOTE:
1. REPAIRING AND REPLACEMENT OF OUTLETS

4 SECOND TO FOURTH FLOOR POWER LAYOUT (CASTELO BUILDING 2)

SCALE 1:100M



Republika ng Pilipinas
Lungsod ng Quezon
CITY ENGINEERING DEPARTMENT

PROJECT TITLE:
**PROPOSED REHABILITATION AND
UPGRADING OF ELECTRICAL SYSTEM AT
BAGONG SILANGAN ELEMENTARY
SCHOOL**
LOCATION:
BAGONG SILANGAN, DISTRICT 2, QUEZON CITY

DESIGNED BY:
DATE: 05/01/22
CHECKED BY:
REVIEWED BY:

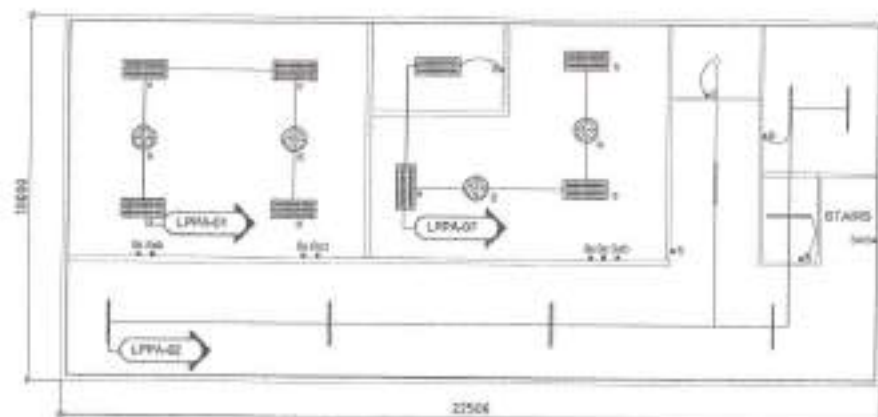
SUBMITTED BY:
ENGR. LEO S. DEL ROSARIO
HEAD, PLANNING & PROGRAMMING DIVISION

RECOMMENDING APPROVAL:
ENGR. ISAGANYA R. VERZOSA, JR.
OIC, CITY ENGINEERING DEPARTMENT

APPROVED BY:
HON. MA. JOSEFINA B. BELMONTE
CITY MAYOR

SHEET CONTENT:
CASTELO 2
GROUND FLOOR
LIGHTING LAYOUT
AND POWER LAYOUT
SECOND TO FOURTH
FLOOR LIGHTING
LAYOUT
AND POWER LAYOUT

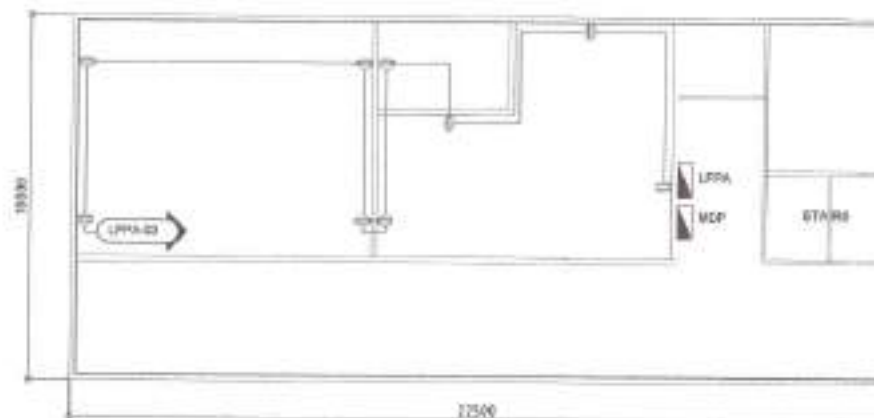
SHEET NO.
**EL-18
34 40**



NOTE:
1. REWIRING AND REPLACEMENT OF LIGHTING
FIXTURES AND WIRING DEVICES

1 GROUND FLOOR LIGHTING LAYOUT (CASTELO BUILDING 3)

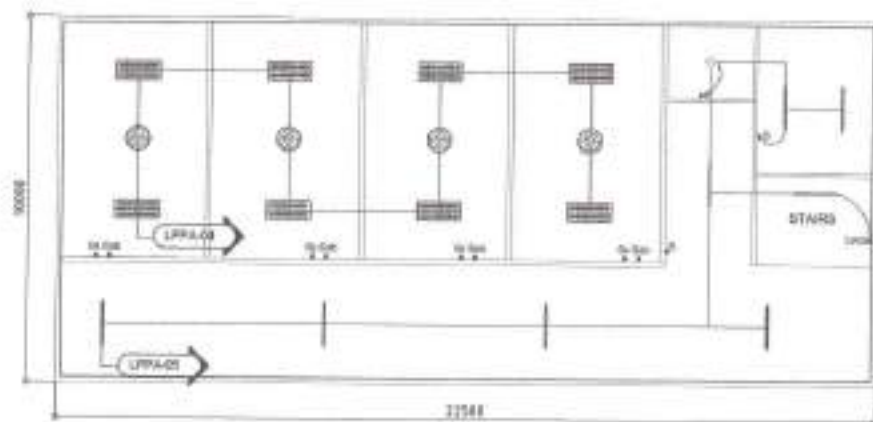
SCALE 1:150M



NOTE:
1. REWIRING AND REPLACEMENT OF OUTLETS

3 GROUND FLOOR POWER LAYOUT (CASTELO BUILDING 3)

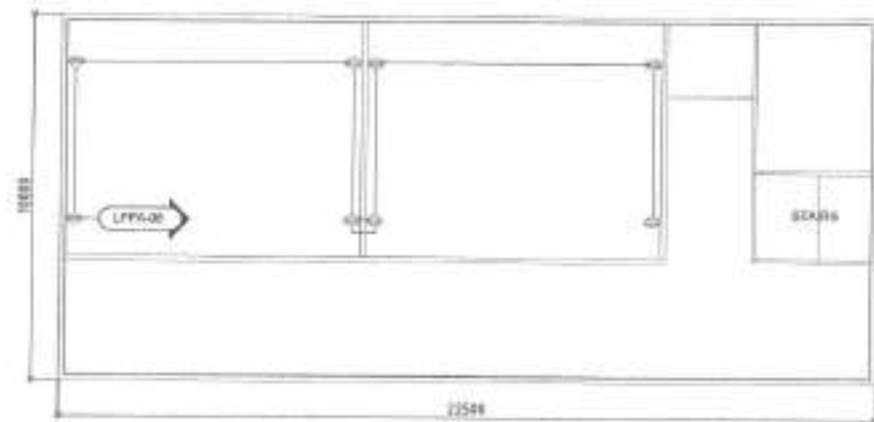
SCALE 1:150M



NOTE:
1. REWIRING AND REPLACEMENT OF LIGHTING
FIXTURES AND WIRING DEVICES

2 SECOND FLOOR LIGHTING LAYOUT (CASTELO BUILDING 3)

SCALE 1:150M

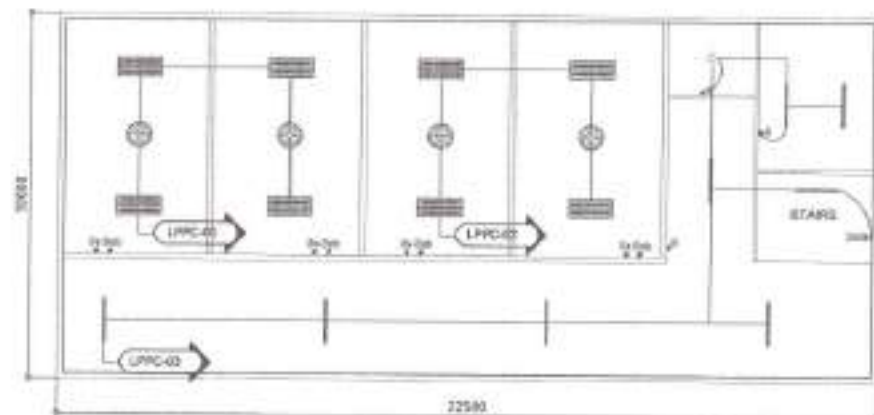


NOTE:
1. REWIRING AND REPLACEMENT OF OUTLETS

4 SECOND FLOOR POWER LAYOUT (CASTELO BUILDING 3)

SCALE 1:150M

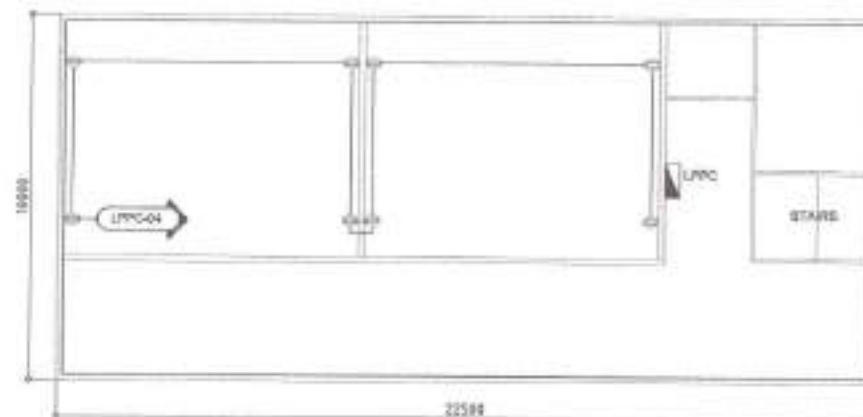
<p>Republika ng Pilipinas Lungsod ng Quezon CITY ENGINEERING DEPARTMENT</p>	PROJECT TITLE:	DRAWN BY:	SUBMITTED BY:	RECOMMENDING APPROVAL:	APPROVED BY:	SHEET CONTENT	SHEET NO.
	PROPOSED REHABILITATION AND UPGRADING OF ELECTRICAL SYSTEM AT BAGONG SILANGAN ELEMENTARY SCHOOL	DATE: 03.31.22 CHECKED BY: [Signature] REVISION NO.:	ENGR. LEO S. DEL ROSARIO HEAD, PLANNING & PROGRAMMING DIVISION	ENGR. BASIL R. VERZOSA, JR. DCL CITY ENGINEERING DEPARTMENT	HON. MA. JOSEFINA G. BELMONTE CITY MANOR	CASTELO 3 LIGHTING LAYOUT AND POWER LAYOUT	EL-19 35/40



NOTE:
1. REWIRING AND REPLACEMENT OF LIGHTING
FIXTURES AND WIRING DEVICES

1 THIRD TO FOURTH FLOOR LIGHTING LAYOUT (CASTELO BUILDING 3)

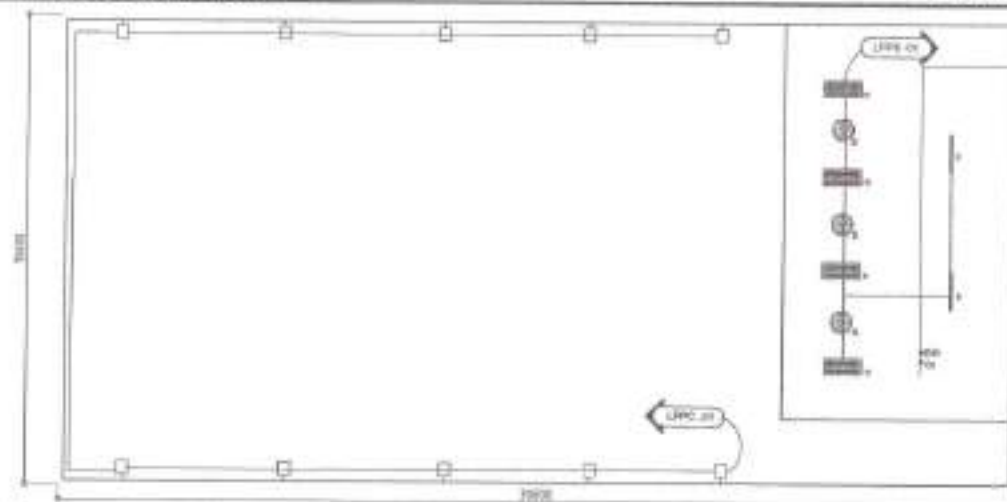
SCALE 1:150M



NOTE:
1. REWIRING AND REPLACEMENT OF OUTLETS

2 THIRD TO FOURTH FLOOR POWER LAYOUT (CASTELO BUILDING 3)

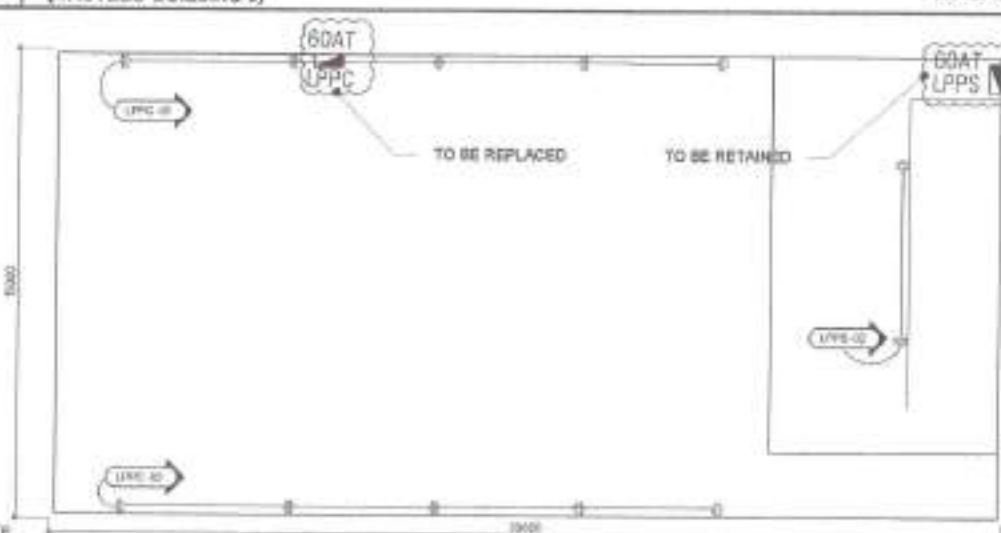
SCALE 1:150M



NOTE:
1. REWIRING AND REPLACEMENT OF LIGHTING
FIXTURES AND WIRING DEVICES

3 COVERED COURT AND STAGE LIGHTING LAYOUT

SCALE 1:175M

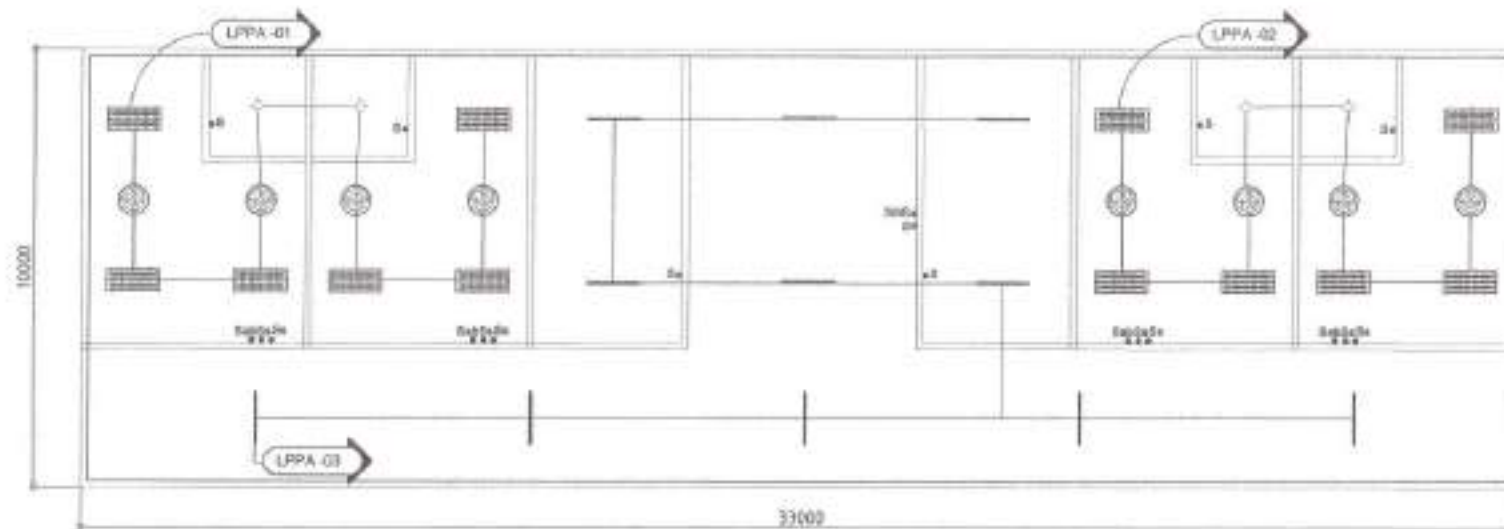


NOTE:
1. REWIRING AND REPLACEMENT OF OUTLETS

4 COVERED COURT AND STAGE POWER LAYOUT

SCALE 1:150M

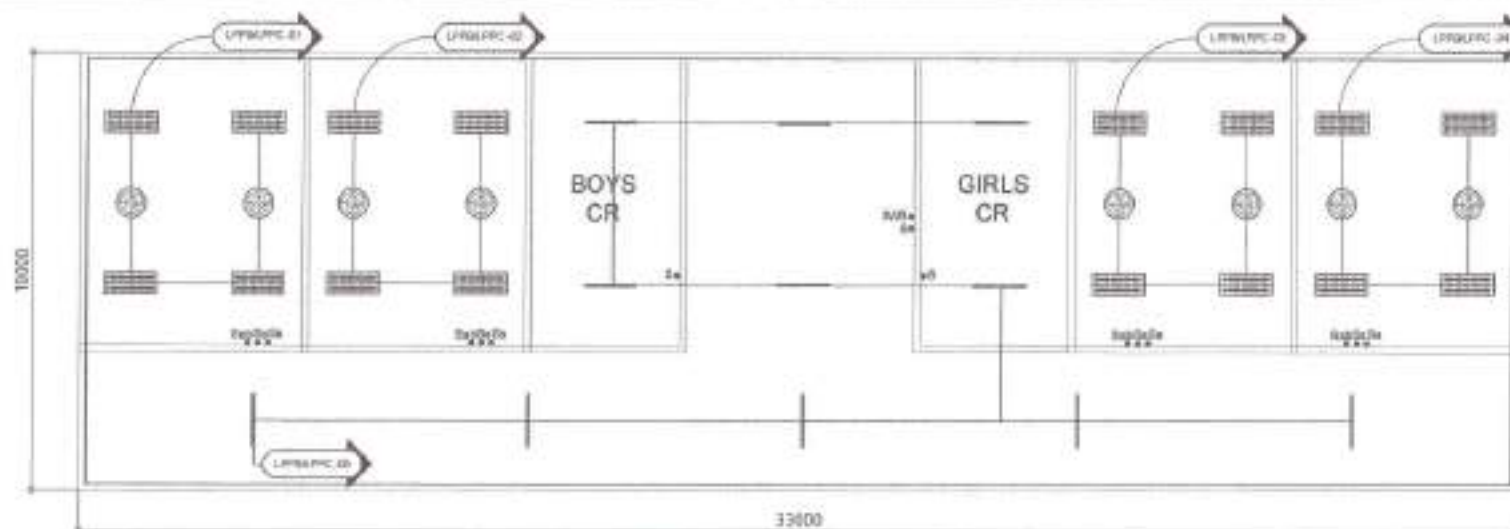
	PROJECT TITLE: PROPOSED REHABILITATION AND UPGRADING OF ELECTRICAL SYSTEM AT BAGONG SILANGAN ELEMENTARY SCHOOL ✓	DRAWN BY: <i>[Signature]</i> DATE: 01.07.22 CHECKED BY: <i>[Signature]</i> REVISION NO.:	SUBMITTED BY: <i>[Signature]</i> ENGR. LEO S. DEL ROSARIO HEAD, PLANNING AND PROGRAMING DIVISION	RECOMMENDING APPROVAL: <i>[Signature]</i> ENGR. ISAGANI R. VERZOSA, JR. CH. CITY ENGINEERING DEPARTMENT	APPROVED BY: HON. MA. JOSEFINA G. BELMONT CITY MANG	SHEET CONTENT: CASTELO 3 LIGHTING LAYOUT AND POWER LAYOUT	SHEET NO.: EL-20 36 40
	LOCATION: BPO, BAGONG SILANGAN, DISTRICT 3, QUEZON CITY ✓						



NOTE:
1. REWIRING AND REPLACEMENT OF LIGHTING
FIXTURES AND WIRING DEVICES

1 GROUND FLOOR LIGHTING LAYOUT (DEPED BUILDING)





SCALE 1:125M

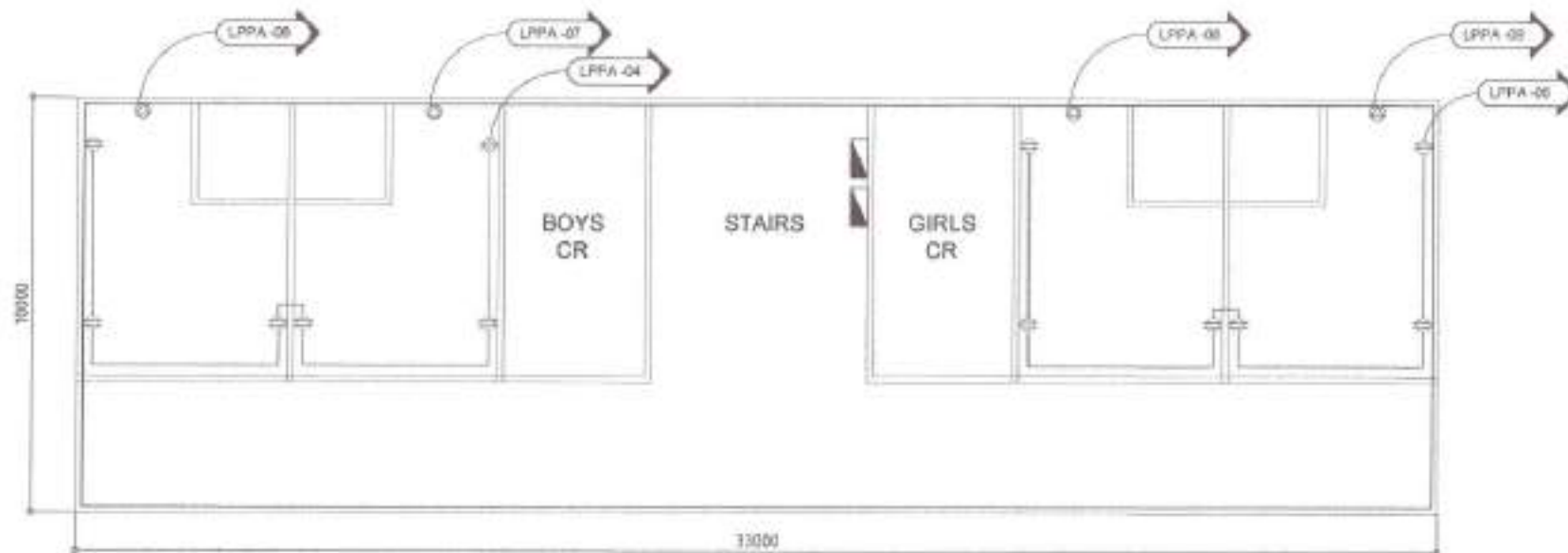


NOTE:
1. REWIRING AND REPLACEMENT OF LIGHTING
FIXTURES AND WIRING DEVICES

2 SECOND TO THIRD FLOOR LIGHTING LAYOUT (DEPED BUILDING)

SCALE 1:125M

 <p>Republic of the Philippines Lungsod ng Quezon CITY ENGINEERING DEPARTMENT</p>	<p>PROJECT TITLE: PROPOSED REHABILITATION AND UPGRADING OF ELECTRICAL SYSTEM AT BAGONG SILANGAN ELEMENTARY SCHOOL</p> <p>LOCATION: BRGY. BAGONG SILANGAN, DISTRICT 2, QUEZON CITY</p>	<p>DESIGN BY: DATE: 03/01/22 CHECKED BY: REVISION NO.:</p>	<p>APPROVED BY:  ENGR. LEO S. DEL ROSARIO HEAD, PLANNING PROGRAMMING DIVISION</p>	<p>RECOMMENDATIVE APPROVAL:  ENGR. IMELDA R. VERZOSA, JR. D.O. CITY ENGINEERING DEPARTMENT</p>	<p>APPROVED BY:  HON. MA. JOSEFINA G. BELMONTE CITY MAYOR</p>	<p>SHEET CONTENT: DEPED BUILDING LIGHTING LAYOUT</p>	<p>SHEET NO. EL-21 37 40</p>
---	--	--	--	---	--	--	--

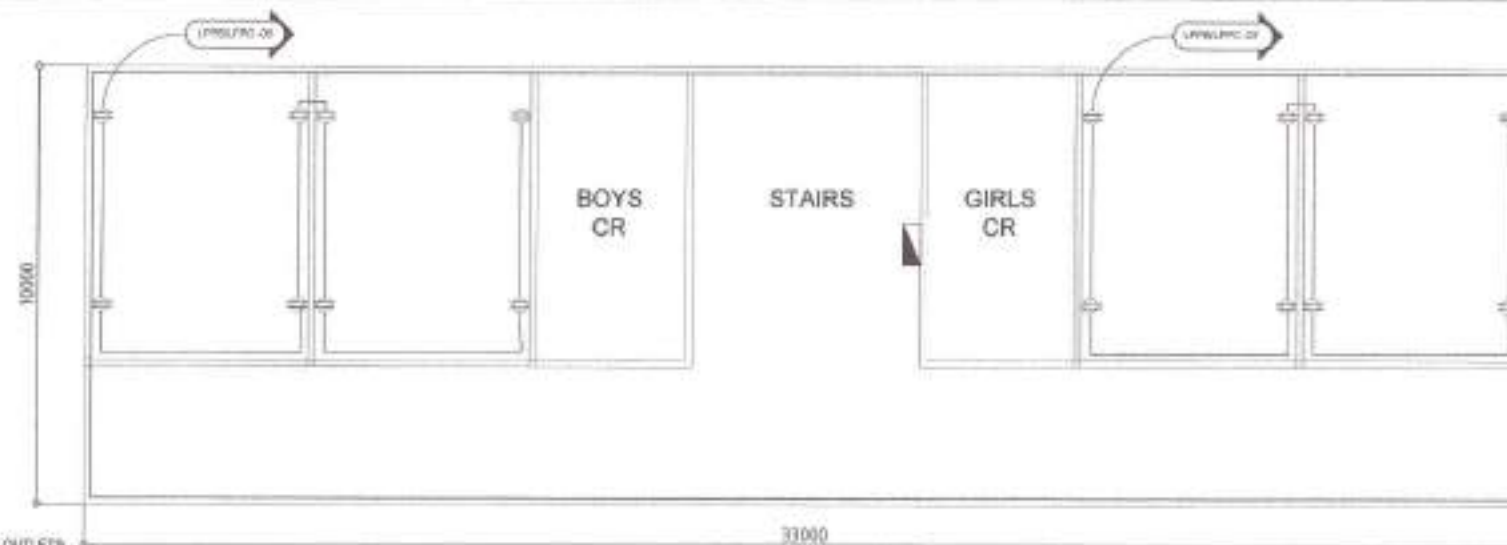


NOTE

1. REMOVING AND REPLACEMENT OF OUTLETS
2. PANEL BOARD TO BE REPLACED

1 GROUND FLOOR POWER LAYOUT (DEPED BUILDING)

SCALE 1:125M



NOTE

1. REMOVING AND REPLACEMENT OF OUTLETS
2. PANEL BOARD TO BE REPLACED

2 SECOND TO THIRD FLOOR POWER LAYOUT (DEPED BUILDING)

SCALE 1:125M



Republika ng Pilipinas
Lungsod ng Quezon
CITY ENGINEERING DEPARTMENT

PROJECT TITLE:

PROPOSED REHABILITATION AND
UPGRADING OF ELECTRICAL SYSTEM AT
BAGONG SILANGAN ELEMENTARY
SCHOOL

LOCATION:

BAGY. BAGONG SILANGAN, DISTRICT 2, QUEZON CITY

DESIGN BY:

DATE: 03.01.22

CHECKED BY:

REVISION NO.:

SUBMITTED BY:

ENGR. LEO S. DEL ROSARIO
HEAD, PLANNING & PROGRAMMING DIVISION

RECOMMENDING APPROVAL:

ENGR. ISAAC R. VERZOSA, JR.
DCC, CITY ENGINEERING DEPARTMENT

APPROVED BY:

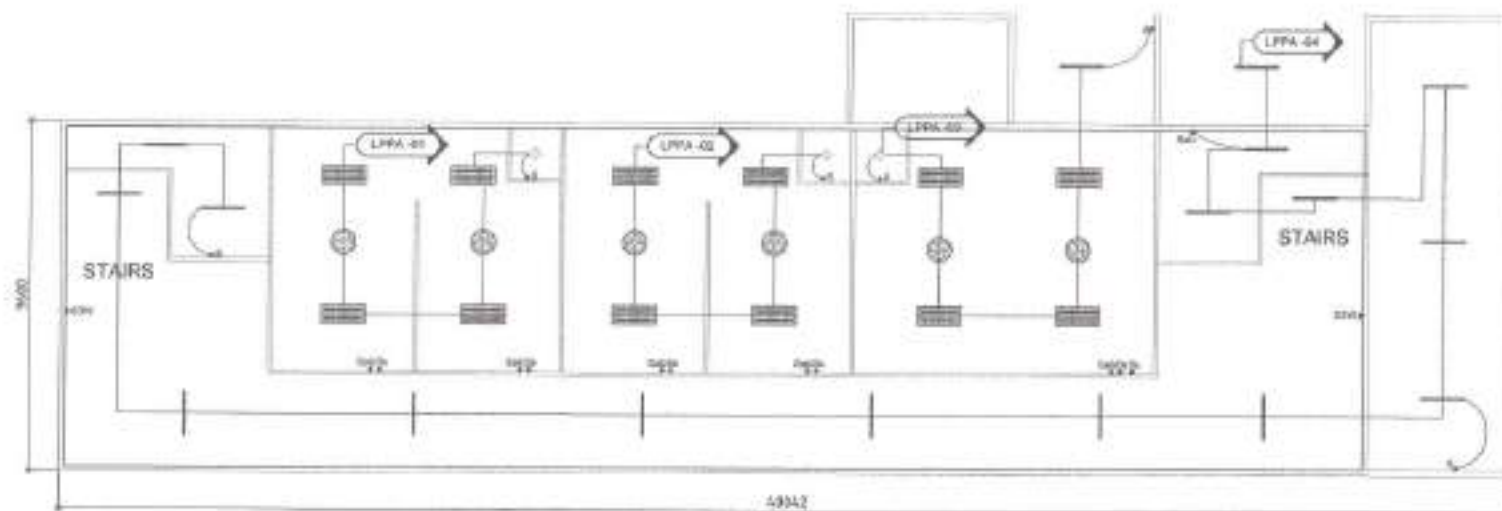
HON. MA. JOSEFINA G. BELMONTTE
CITY MAYOR

DESIGN CONTENT:

DEPED BUILDING
POWER LAYOUT

SHEET NO.:

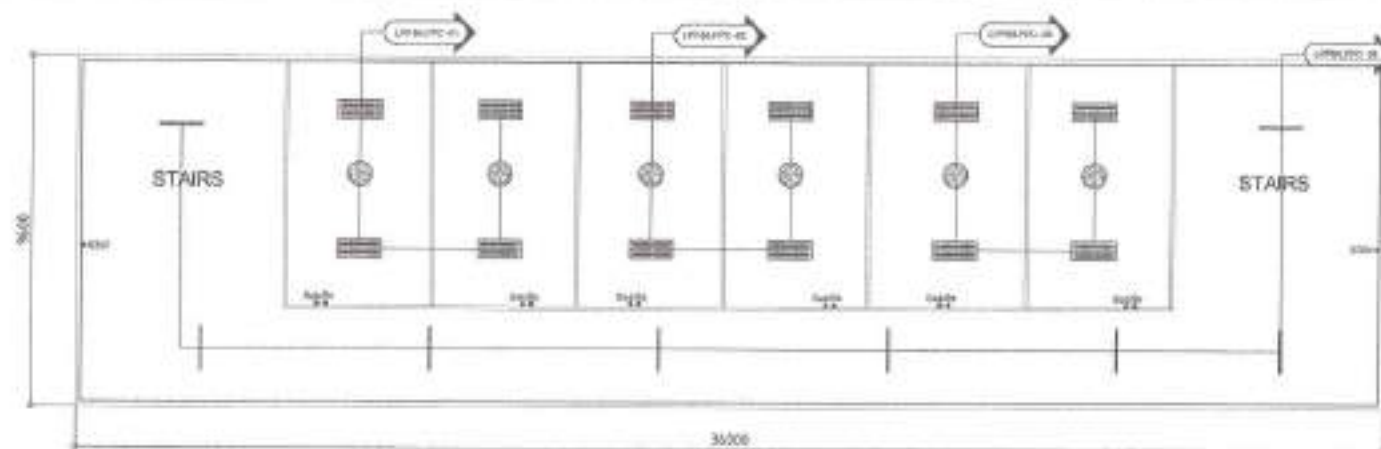
EL-22
38 40



NOTE:
1. REPAIRING AND REPLACEMENT OF LIGHTING
FIXTURES AND WIRING DEVICES

1 GROUND FLOOR LIGHTING LAYOUT (MATHAY BUILDING)


SCALE 1:150M.



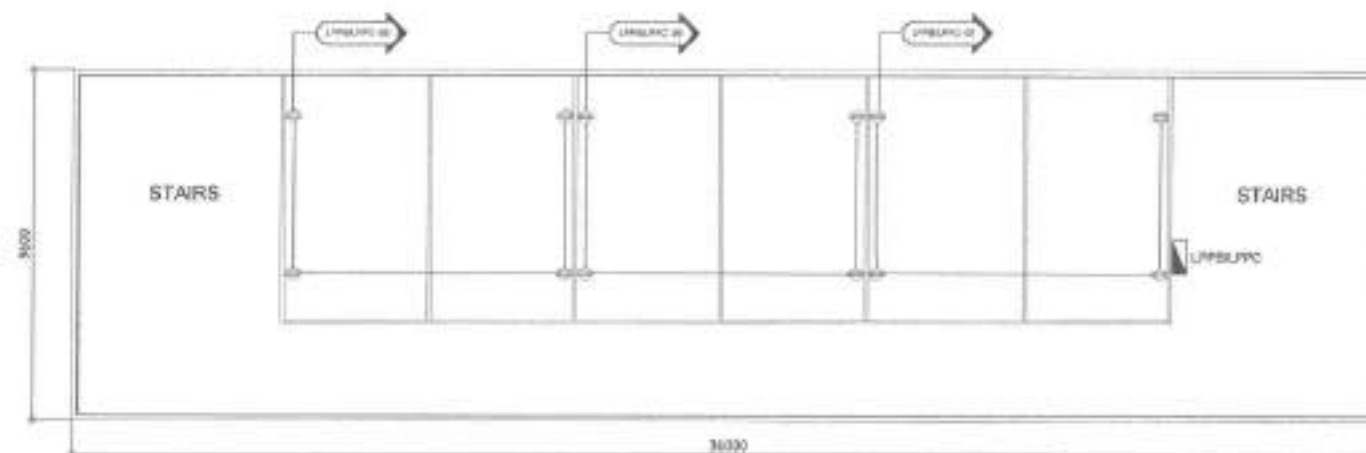
NOTE:
1. REPAIRING AND REPLACEMENT OF LIGHTING
FIXTURES AND WIRING DEVICES

2 SECOND TO THIRD FLOOR LIGHTING LAYOUT (MATHAY BUILDING)

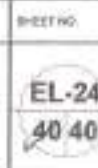
SCALE 1:125M.

 <p>Republika ng Pilipinas Lungsod ng Quezon CITY ENGINEERING DEPARTMENT</p>	<p>PROJECT TITLE: PROPOSED REHABILITATION AND UPGRADING OF ELECTRICAL SYSTEM AT BAGONG SILANGAN ELEMENTARY SCHOOL</p> <p>LOCATION: BAGY. BAGONG SILANGAN, DISTRICT 2, QUEZON CITY</p>	<p>DESIGNED BY: ENR. LEO S. DEL ROSARIO HEAT, PLUMBING & PROGRAMMING DIVISION</p>	<p>APPROVED BY: ENR. LEO S. DEL ROSARIO HEAT, PLUMBING & PROGRAMMING DIVISION</p>	<p>RECOMMENDING APPROVAL: ENR. ISAGANI K. VERZOSA, JR. CH. CITY ENGINEERING DEPARTMENT</p>	<p>APPROVED BY: HON. MA. JOSEFINA G. BELMONTE CITY ENGINEER</p>	<p>SHEET CONTENT: BAGWAY BUILDING LIGHTING LAYOUT</p>	<p>SHEET NO. EL-23 39/40</p>
--	--	---	---	--	---	---	--

SCALE 1:125M



SCALE 1-12000.



Section VIII. Bill of Quantities

Notes on the Bill of Quantities

Objectives

The objectives of the Bill of Quantities are:

- a. to provide sufficient information on the quantities of Works to be performed to enable Bids to be prepared efficiently and accurately; and
- b. when a Contract has been entered into, to provide a priced Bill of Quantities for use in the periodic valuation of Works executed.

In order to attain these objectives, Works should be itemized in the Bill of Quantities in sufficient detail to distinguish between the different classes of Works, or between Works of the same nature carried out in different locations or in other circumstances which may give rise to different considerations of cost. Consistent with these requirements, the layout and content of the Bill of Quantities should be as simple and brief as possible.

Daywork Schedule

A Daywork Schedule should be included only if the probability of unforeseen work, outside the items included in the Bill of Quantities, is high. To facilitate checking by the Entity of the realism of rates quoted by the Bidders, the Daywork Schedule should normally comprise the following:

- a. A list of the various classes of labor, materials, and Constructional Plant for which basic daywork rates or prices are to be inserted by the Bidder, together with a statement of the conditions under which the Contractor will be paid for work executed on a daywork basis.
- b. Nominal quantities for each item of Daywork, to be priced by each Bidder at Daywork rates as Bid. The rate to be entered by the Bidder against each basic Daywork item should include the Contractor's profit, overheads, supervision, and other charges.

Provisional Sums

A general provision for physical contingencies (quantity overruns) may be made by including a provisional sum in the Summary Bill of Quantities. Similarly, a contingency allowance for possible price increases should be provided as a provisional sum in the Summary Bill of Quantities. The inclusion of such provisional sums often facilitates budgetary approval by avoiding the need to request periodic supplementary approvals as the future need arises. Where such provisional sums or contingency allowances are used, the SCC should state the manner in which they will be used, and under whose authority (usually the Procuring Entity's Representative's).

The estimated cost of specialized work to be carried out, or of special goods to be supplied, by other contractors should be indicated in the relevant part of the Bill of Quantities as a particular provisional sum with an appropriate brief description. A separate procurement procedure is normally carried out by the Procuring Entity to select such specialized contractors. To provide an element of competition among the Bidders in respect of any facilities, amenities, attendance, etc., to be provided by the successful Bidder as prime Contractor for the use and convenience of the specialist contractors, each related provisional sum should be followed by an item in the Bill of Quantities inviting the Bidder to quote a sum for such amenities, facilities, attendance, etc.

Signature Box

A signature box shall be added at the bottom of each page of the Bill of Quantities where the authorized representative of the Bidder shall affix his signature. Failure of the authorized representative to sign each and every page of the Bill of Quantities shall be a cause for rejection of his bid.

These Notes for Preparing a Bill of Quantities are intended only as information for the Procuring Entity or the person drafting the Bidding Documents. They should not be included in the final documents.

**PROJECT TITLE : PROPOSED REHABILITATION AND UPGRADING OF ELECTRICAL SYSTEM
AT BAGONG SILANGAN ELEMENTARY SCHOOL**

LOCATION : BARANGAY BAGONG SILANGAN, DISTRICT 2, QUEZON CITY

PROJECT NO. : 23 - 00048

DURATION : One Hundred Eighty (180) Calendar Days

BREAKDOWN OF COST

ITEM CODE	ITEM OF WORK (DESCRIPTION)	MATERIALS COST	LABOR COST	INDIRECT COST	AGGREGATE COST
GR	GENERAL REQUIREMENTS	₱	₱	₱	₱
OGR	OTHER GENERAL REQUIREMENTS (NON - O.C.M.)				
I	REHABILITATION OF SB HALL BUILDING				
II	REHABILITATION OF LIBAN BUILDING				
III	REHABILITATION OF CASTELO 1 BUILDING				
IV	REHABILITATION OF CASTELO 2 BUILDING				
V	REHABILITATION OF CASTELO 3 BUILDING				
VI	REHABILITATION OF MATHAY BUILDING				
VII	REHABILITATION OF DEPED BUILDING				
VIII	REHABILITATION OF COVERED COURT AND STAGE				
IX	CONSTRUCTION OF FIRE EXIT AT CASTELO 2 BUILDING				
X	UPGRADING OF ELECTRICAL SYSTEM				
SUB - T O T A L		₱	₱	₱	₱

TOTAL COST ₱

LUMP SUM BID IN WORDS : _____

Contractor : _____

BILL OF QUANTITIES
(Building Construction/Rehabilitation Project)

PROJECT TITLE : PROPOSED REHABILITATION AND UPGRADING OF ELECTRICAL SYSTEM
AT BAGONG SILANGAN ELEMENTARY SCHOOL

LOCATION : BARANGAY BAGONG SILANGAN, DISTRICT 2, QUEZON CITY

PROJECT NO. : 23 - 00048

DURATION : One Hundred Eighty (180) Calendar Days

SCOPE OF WORK :

- GR General Requirements** include billboard(s).
- OGR Other General Requirements (NON-O.C.M.)** include, but not limited to:
- 1 Temporary water system including water meter/sub-meter and connections.
 - 2 Temporary electrical system including electric meter/sub-meter and connections.
 - 3 Scaffolding for general use (rental).
 - 4 Clearing, hauling, disposal of construction materials and debris, and Construction Safety Net.
- I REHABILITATION OF SB HALL BUILDING**
- I-SW Site Works:**
- 1 Site clearing and preparation.
 - 2 Demolition/removal works.
 - 3 Excavation for structures and backfill
- I-CWS Civil / Structural Works:**
- 1 Earthworks include gravel bedding
 - 2 Concrete works include concreting, installation of reinforcing steel bars, and formworks.
 - 3 Masonry works include plastering works and floor topping
 - 4 Moisture protection include waterproofing works.
 - 5 Metal works include fabrication of metal structures.
 - 6 Roofing works include installation of roofing and bended materials.
- I-AW Architectural Works:**
- 1 Ceiling works include installation of ceilings with framings.
 - 2 Wall finishes include tile works and other wall finishes.
 - 3 Floor finishes include tile works for flooring and other floor finishes.
 - 4 Painting works include painting for interior walls, exterior walls, ceilings and metal surfaces
 - 5 Fabricated materials include installation of doors and windows, cabinetry and replacement of glass window at façade.
- I-S/PW Sanitary/Plumbing Works:**
- 1 Installation of water efficient sanitary/plumbing fixtures and accessories.
- I-EW Electrical Works:**
- 1 Installation of roughing-ins and wirings.
 - 2 Installation of system devices, energy efficient lighting fixtures and components, panelboards, and accessories.
- II REHABILITATION OF LIBAN BUILDING**
- II-SW Site Works:**
- 1 Demolition/removal works.
- II-CWS Civil / Structural Works:**
- 1 Masonry works include plastering works.
 - 2 Metal works include fabrication of metal structures.
- II-AW Architectural Works:**
- 1 Ceiling works include installation of ceilings with framings.

- 2 Painting works include painting for interior walls, exterior walls, ceilings and metal surfaces
- 3 Fabricated materials include installation windows.
- II-EW Electrical Works:
 - 1 Installation of roughing-ins and wirings.
 - 2 Installation of system devices, energy efficient lighting fixtures and components, panelboards, and accessories.

III REHABILITATION OF CASTELO 1 BUILDING

- III-SW Site Works:
- 1 Demolition/removal works.
- III-CWS Civil / Structural Works:
- 1 Masonry works include plastering works.
- III-AW Architectural Works:
- 1 Painting works include painting for interior walls.
- III-EW Electrical Works:
- 1 Installation of roughing-ins and wirings.
- 2 Installation of system devices, energy efficient lighting fixtures and components, panelboards, and accessories.

IV REHABILITATION OF CASTELO 2 BUILDING

- IV-SW Site Works:
- 1 Demolition/removal works.
- IV-CWS Civil / Structural Works:
- 1 Masonry works include plastering works.
- IV-AW Architectural Works:
- 1 Painting works include painting for interior walls.
- IV-EW Electrical Works:
- 1 Installation of roughing-ins and wirings.
- 2 Installation of system devices, energy efficient lighting fixtures and components, panelboards, and accessories.

V REHABILITATION OF CASTELO 3 BUILDING

- V-SW Site Works:
- 1 Demolition/removal works.
- V-CWS Civil / Structural Works:
- 1 Masonry works include plastering works.
- V-AW Architectural Works:
- 1 Painting works include painting for interior walls.
- V-EW Electrical Works:
- 1 Installation of roughing-ins and wirings.
- 2 Installation of system devices, energy efficient lighting fixtures and components, panelboards, and accessories.

VI REHABILITATION OF MATHAY BUILDING

- VI-SW Site Works:
- 1 Demolition/removal works.
- VI-CWS Civil / Structural Works:
- 1 Masonry works include plastering works.
- VI-AW Architectural Works:
- 1 Painting works include painting for interior walls.
- VI-EW Electrical Works:
- 1 Installation of roughing-ins and wirings.
- 2 Installation of system devices, energy efficient lighting fixtures and components, panelboards, and accessories.

VII REHABILITATION OF DEPED BUILDING

- VII-SW Site Works:
- 1 Demolition/removal works.
- VII-CWS Civil / Structural Works:
- 1 Masonry works include plastering works.
- VII-AW Architectural Works:
- 1 Painting works include painting for interior walls.
- VII-EW Electrical Works:

- 1 Installation of roughing-ins and wirings.
- 2 Installation of system devices, energy efficient lighting fixtures and components, panelboards, and accessories.

VIII REHABILITATION OF COVERED COURT AND STAGE

VIII-SW

Site Works:

- 1 Demolition/removal works.
- 2 Relocation Works
- 2 Roofing works include installation of roofing and bended materials.

- VIII-AW Architectural Works
- 1 Ceiling works include installation of ceilings with framings.
 - 2 Painting works include painting for floor, exterior walls, metal surfaces and ceilings.
- VIII-EW Electrical Works:
- 1 Installation of roughing-ins and wirings.
 - 2 Installation of system devices, energy efficient lighting fixtures and components, panelboards, and accessories.

IX CONSTRUCTION OF FIRE EXIT AT CASTELO 2 BUILDING

- IX-SW Site Works:
- 1 Layout and staking.
 - 2 Site clearing and preparation.
 - 3 Demolition/removal works.
 - 4 Excavation for structures and backfill
- IX-CWS Civil / Structural Works:
- 1 Earthworks include gravel bedding
 - 2 Concrete works include concreting, installation of reinforcing steel bars, and formworks.
 - 3 Masonry works include laying of CHB and restoration of concrete.
 - 4 Moisture protection include waterproofing works.
 - 5 Metal works include fabrication of metal structures.
- IX-AW Architectural Works:
- 1 Painting works include painting for exterior walls and metal surfaces.

X UPGRADING OF ELECTRICAL SYSTEM

- X-EW Electrical Works:
- 1 Installation of roughing-ins and wirings.
 - 2 Installation of panelboards and accessories.
- X-UTI Utility and Ancillary Works
- X-UTI-SW Site Works:
- 1 Excavation for structures
- X-UTI-CWS Civil / Structural Works:
- 1 Installation of Earth Pit
- O Others (included in O.C.M.)**
- 1 Provision of construction, health and safety such as safety gears, medical kit, etc.
 - 2 Preparation of shop drawings, as necessary.
 - 3 Preparation of as-built plans (signed and sealed by the respective professional(s)).
 - 4 Testing and commissioning works shall be performed as per standard procedures.

ITEM CODE	WORK DESCRIPTION AND SCOPE OF WORKS	QTY.	UNIT	UNIT COST	TOTAL COST
GR	GENERAL REQUIREMENTS				
SPL7	Billboard	1	piece	₱	₱
				MATERIAL COST GR	₱
				LABOR COST GR	
				DIRECT COST GR	₱
OGR	OTHER GENERAL REQUIREMENTS (NON -				
OGR0301	Temporary Water Facility (For	1	unit	₱	₱
OGR0302	Temporary Electrical Facility (Rehabilitation)	1	unit		
OGR05	Scaffolding (Rental)	660	sq.m.		
				Subtotal OGR0301-OGR0305	₱

ITEM CODE	WORK DESCRIPTION AND SCOPE OF WORKS	QTY.	UNIT	UNIT COST	TOTAL COST
OGR01	Clearing, Hauling and Disposal of Construction	21	t.l.	₱	₱
				Subtotal OGR01	₱
				MATERIAL COST OGR	₱
				LABOR COST OGR	
				DIRECT COST OGR	₱

ITEM CODE	WORK DESCRIPTION AND SCOPE OF WORKS	QTY.	UNIT	UNIT COST	TOTAL COST
I	REHABILITATION OF SB HALL BUILDING				
I-SW	Site Works				
SW02	Site Clearing and Preparation	8	sq.m.	P	P
SW04	Backfill	1	cu.m.		
DEMV002	Chipping Works for Pipelines and Utilities	3	cu.m.		
DEMV004	Demolition of Existing Structure (Fire Exit)	12	cu.m.		
DEMV006	Removal of Stair Handrails	32	sq.m.		
DEMV009	Removal of Existing Door Including Hardware	4	set		
DEMV021	Removal of Existing Floor and Wall Tiles	90	sq.m.		
DEMV023	Removal of Existing Partition Board Including	150	sq.m.		
DEMV025b	Removal of Existing Roof Sheet Including	29	sq.m.		
DEMV027	Removal of Existing Window Panel Including Hardware and Accessories	202	sq.m.		
DEMV017	Removal of Existing Concrete Countertop	8	sq.m.		
106	Excavation (Structure)	1	cu.m.		
				Direct Cost I-SW	P
I-CWS	Civil / Structural Works				
CWSE	Earthworks				
CWSE01	Gravel Bedding	1	cu.m.	P	P
CWSC	Concrete Works				
CWSCR1	Ready Mix Concrete, 28MPa, 3/4" Gravel at 28 Days				
CWSCR106	Column Pedestal	1	cu.m.		
CWSCR106	Footing	1	cu.m.		
	Reinforcing Steel Bars				
CWSRB40	Grade 40 Reinforcing Steel Bar including				
CWSRB4001	10mm Ø Column Ties	11	kg		
CWSRB 60	Grade 60 Reinforcing Steel Bar including				
CWSRB 6001	16mm Ø Column Pedestal	14	kg		
CWSRB 6001	16mm Ø Footing Pedestal	19	kg		
CWSF	Formworks				
CWSF03	Column Pedestal	2	sq.m.		
CWSF03	Footing Pedestal	2	sq.m.		
CWSMA	Masonry Works				
CWSMA05	Plastering, 25mm thk for Ordinary Walls	50	sq.m.		
CWSMA21	Concrete/Floor Topping (25mm thick)	84	sq.m.		
CWSMP	Moisture Protection				
CWSMPV	Vapor Barrier Sheet (provide prior to				
CWSMPV03	6 mil	2	sq.m.		
CWSPRW	Roofing Works				
CWSPRW0402	Rib-Type / Long Span 0.40 mm, 1000 with Connection Accessories	29	sq.m.		
CWSPRW0708	Pre Painted G.I. End Flashing, GA 26 x 0.60m	9	l.m.		
CWSPRW0802	12mm thk x 12" Fiber Cement Fascia Board	16	l.m.		
CI/S0101	Tekscrew, 12mm x 25mm for Steel Purlins	129	piece		
CI/S0105	Blind Rivet, 1/8" x 1"	15	sq.m.		
CWSME	Metal Works				

ITEM CODE	WORK DESCRIPTION AND SCOPE OF WORKS	QTY.	UNIT	UNIT COST	TOTAL COST
	Stair Hand Railings				
CWSME0710	50mmø G.I. Pipe, Sch. 40	139	kg		
CWSME0713	12mm Square Bar	204	kg		
	Roof Framing				
CWSME0703	38mm x 38mm x 6mm Angle Bar	261	kg		
CWSME0708	50mm x 100mm x 2mm C-Purlins	108	kg		
CWSME0712	10mm Ø Sagrod	5	kg		

ITEM CODE	WORK DESCRIPTION AND SCOPE OF WORKS	QTY.	UNIT	UNIT COST	TOTAL COST
	Fire Exit				
CWSME0703	50mm x 50mm x 6mm Angle Bar	485	kg		
CWSME0704	200mm x 300mm x 25mm Anchor Plate	186	kg		
CWSME0704	200mm x 400mm x 25mm Base Plate	33	kg		
CWSME0705	50mm Ø B.I. Pipe Steel Handrail	458	kg		
CWSME0706	75mm x 300mm x 7mm Metal Channel	616	kg		
CWSME0706	75mm x 200mm x 7mm Metal Channel	611	kg		
CWSME0707	4mm thk Checkered Plate	928	kg		
CWSME0713	16mm Square Bar	678	kg		
CWSME0714	50mm x 100mm x 4mm Tubular Bar	201	kg		
CWSME0717	Steel Beam (W12 x 45)	950	kg		
CI/S02032	25mm Ø x 150mm Dyna Bolt	120	piece		
CI/S02036	25mm Ø x 150mm Anchor Bolt	6	piece		
MC	Miscellaneous and Consumables				
MC/G05	Grinding Disc, 4"	10	piece		
MC/G13	All around Sealant	3	tube		
MC/G19	Acetylene Tank (Refill)	8	tank		
MC/G23	Cut off Blade / Wheel	10	piece		
MC/G27	Drill Bit, 20mm Ø (metal)	10	piece		
MC/G29	Oxygen Tank (Refill)	16	tank		
MC/G36	Welding Rod (for Steel)	71	kg		
				Material Cost I-CWS	₱
				Labor Cost I-CWS	
				Direct Cost I-CWS	₱
I-AW	Architectural Works				
AW02	Ceiling Finishes				
AW0204	6.0mm thk. Fibercement Board including Metal Framing	472	sq.m.	₱	₱
AW03	Wall Finishes / Partition / Decoration for Façade / Countertop Finish				
AW0305	300 x 300mm Homogeneous Wall Tiles including Adhesive and Grout	11	sq.m.		
AW0315	6mm thk Fiber Cement Board on Metal Studs (Double Wall)	158	sq.m.		
AW04	Floor Finishes				
AW0404	600 x 600mm Non-Skid Homogeneous Floor Tiles including Adhesive and Grout	84	sq.m.		
AWP	Painting Works				
AWP0101	Flat Latex Paint Finish (Interior Wall - 3 Coats)	1,640	sq.m.		
AWP0102	Elastomeric Paint Finish (Exterior Wall - 3 Coats)	1,433	sq.m.		
AWP0105	Flat Latex Paint Finish (Ceiling - 3 Coats)	472	sq.m.		
AWP0106	Epoxy Enamel Paint Finish (Steel Member - 3 Coats)	32	sq.m.		
AWP0109	Flat Latex Paint Finish (Dry Wall - 3 coats)	315	sq.m.		
				Material Cost I-AW02 - I-AWP	₱
				Labor Cost I-AW02 - I-AWP	
				Subtotal I-AW02 - I-AWP	₱

ITEM CODE	WORK DESCRIPTION AND SCOPE OF WORKS	QTY.	UNIT	UNIT COST	TOTAL COST
AW01	Fabricated Materials				
AW0114	Countertop with Aluminum Cabinet and 600mm x 600mm Homegenous Tiles (width=600mm)	8	l.m.	₱	₱
AWD	Installation of Doors				
AWD010108	D1- (0.80m x 2.10m) Metal Door	4	set		

ITEM CODE	WORK DESCRIPTION AND SCOPE OF WORKS	QTY.	UNIT	UNIT COST	TOTAL COST
AWW	Installation of Windows				
AWW08	W1 - (1.2m x 3.0m) Steel Casement Window	56	set		
AWW10	W2 - Tempered Glass,12mm thick	1	set		
		Material Cost I-AW01 - I - AWW			₱
		Labor Cost I-AW01 - I - AWW			
		Subtotal I-AW01 - I - AWW			₱
				Material Cost I-AW	₱
				Labor Cost I-AW	
				Direct Cost I-AW	₱
S/PW	Sanitary/ Plumbing Works				
S/PW02	Waterline System				
S/PW0201	Roughing-Ins including Connecting Machine				
S/PW02010267	20mmØ x 12mmØ Female Threaded Tee	32	piece	₱	₱
S/PW02010269	25mmØ x 15mmØ Female Threaded Tee	8	piece		
S/PW03	Sanitary Fixtures, Fittings and Accessories				
S/PW0301	Bidet with Complete Fittings and	1	set		
S/PW0306	Kitchen Sink, Single Tub with Grease Trap (5GPM) with Complete Fittings and Accessories	1	set		
S/PW0308	Lavatory (Over the Counter) with Complete Fittings and Accessories	1	set		
S/PW0314	Lavatory, Wall Mounted, with Complete Fittings and Accessories	1	set		
S/PW0327	Water Closet, Tank-Type with Complete Fittings and Accessories (Water Efficient)	1	set		
S/PW05	Plumbing Fixtures, Fittings and Accessories				
S/PW0501	Angle Valve, Single Way, Stainless	2	piece		
S/PW0502	Angle Valve, Two Way, Stainless	1	piece		
S/PW0503	Flexible Hose, Stainless Steel	2	piece		
S/PW06	Drains				
S/PW0601	Floor Drain, 100mmØ, Stainless	1	piece		
MC	Miscellaneous and Consumables				
MC/G06	Hacksaw Blade	2	piece		
MC/G13	All around Sealant	2	tube		
MC/G14	Solvent Cement, 400cc	2	can		
MC/G15	Teflon Tape	5	roll		
MC/G18	Waste Cloth	1	kg		
MC/G26	Drill Bit, 20mm Ø (concrete)	2	piece		
MC/G27	Drill Bit, 20mm Ø (metal)	2	piece		
		Material Cost I-S/PW			₱
		Labor Cost I-S/PW			
		Direct Cost I-S/PW			₱
I-EW	ELECTRICAL WORKS				
EW01	Pipes				

ITEM CODE	WORK DESCRIPTION AND SCOPE OF WORKS	QTY.	UNIT	UNIT COST	TOTAL COST
EW0101	20mmØ PVC Pipe	417	piece	₱	₱
EW0102	25mmØ PVC Pipe	50	piece		
EW0103	32mmØ PVC Pipe	20	piece		
EW0116	65mmØ IMC Pipe	3	piece		
EW04	Mouldings				
EW0403	16mm x 16mm x 2.44m Rectangular PVC Moulding	567	piece		

ITEM CODE	WORK DESCRIPTION AND SCOPE OF WORKS	QTY.	UNIT	UNIT COST	TOTAL COST
EW05	Fittings and Accessories				
EW05001	20mmØ PVC Elbow	96	piece		
EW05002	25mmØ PVC Elbow	20	piece		
EW05003	32mmØ PVC Elbow	4	piece		
EW05010	20mmØ PVC Adaptor	650	piece		
EW05011	25mmØ PVC Adaptor	8	piece		
EW05012	32mmØ PVC Adaptor	8	piece		
EW05022	20mmØ PVC Locknut and Bushing	650	pair		
EW05023	25mmØ PVC Locknut and Bushing	8	pair		
EW05024	32mmØ PVC Locknut and Bushing	8	pair		
EW05037	65mmØ IMC Elbow	3	piece		
EW05047	65mmØ IMC Locknut and Bushing	2	pair		
EW05057	65mmØ IMC Coupling	2	piece		
EW05145	125mm ² Ø Solderless Connector	2	piece		
EW05159	65mmØ Weatherproof Entrance Cap,	1	piece		
EW06	Boxes and Fabricated Pullbox				
EW0601	50mm x 100mm PVC Utility Box	120	piece		
EW0602	100mm x 100mm PVC Junction Box with Cover	205	piece		
EW09	Wires and Cables				
EW0901	THHN Wires				
EW090102a	3.5mm ² THHN Wire	35	roll		
EW090103a	5.5mm ² THHN Wire	2	roll		
EW090105b	14mm ² THHN Wire	120	l.m.		
EW090113	125mm ² THHN Wire	30	l.m.		
EW0903	TW Wires				
EW090302a	3.5mm ² TW Wire	19	roll		
EW090304b	8.0mm ² TW Wire	60	l.m.		
EW090307b	30mm ² TW Wire	15	l.m.		
EW10	Wiring Devices and Other Fixtures				
EW1002	Convenience Outlet with Grounding, Two-Gang	72	piece		
EW1003	Outlet with Grounding, One-Gang, for ACU, Heavy Duty	4	piece		
EW1015	Switch with Plate and Cover, One-Gang	18	piece		
EW1016	Switch with Plate and Cover, Two-Gang	17	piece		
EW1018	Switch with Plate and Cover, Three-Way	4	piece		
EW11	Lighting fixtures (Energy Efficient)				
EW11040	600mm x 1200mm, 2 x 18w LED, Troffer Type, with Complete Accessories, Surface Mounted Type	99	set		
EW11067	Surface Mounted Box Type Lighting Fixture with 1-18W Daylight LED Tube	37	set		
EW11096	10W LED bulb	3	piece		
EW11114	100mmØ Plastic Receptacle	3	piece		
EW11140	Orbit Fan with Selector Switch	47	set		
EW13	Panel Board				
ASSY.	Main: 250AT, 2P, 230V Branches: 4 - 70 AT, 2P, 230V Enclosure: NEMA 1 with Ground Terminals and Terminal Lugs	1	assy		

ITEM CODE	WORK DESCRIPTION AND SCOPE OF WORKS	QTY.	UNIT	UNIT COST	TOTAL COST
ASSY.	Main: 70AT, 2P, 230V Branches: 5 - 20 AT, 2P, 230V 5 - 30 AT, 2P, 230V Enclosure: NEMA 1 with Ground Terminals and Terminal Lugs	1	assy		
ASSY.	Main: 70AT, 2P, 230V Branches: 8 - 20 AT, 2P, 230V Enclosure: NEMA 1 with Ground Terminals	3	assy		

ITEM CODE	WORK DESCRIPTION AND SCOPE OF WORKS	QTY.	UNIT	UNIT COST	TOTAL COST
EW16	Pipe Hangers and Supports				
EW1601	Horizontal Layout of Pipe	500	l.m.		
EW1602	Vertical Layout of Pipe	5	l.m.		
MC	Miscellaneous and Consumables				
MC/G	(Common Items)				
MC/G06	Hacksaw Blade	16	piece		
MC/G13	All Around Sealant	12	tube		
MC/G14	Solvent Cement, 400cc	20	can		
MC/G17	Torch with Butane	4	piece		
MC/G18	Waste Cloth	10	kg		
MC/G37	G.I. Tie Wire, Ga.16 (for Wire / Cable	10	kg		
MC/E	(Electrical Works)				
MC/E01	Electrical Tape	25	roll		
MC/E03	Pulling Lubricant	4	can		
MC/E04	Rubber Tape	10	roll		
				Material Cost I-EW	₱
				Labor Cost I-EW	
				Direct Cost I-EW	₱
				MATERIAL COST I	₱
				LABOR COST I	
				DIRECT COST I	₱
II	REHABILITATION OF LIBAN BUILDING				
II-SW	Site Works				
DEMV002	Chipping Works for Pipelines and Utilities	2	cu.m.	₱	₱
DEMV006	Removal of Stair Handrails	21	sq.m.		
				Direct Cost II-SW	₱
II-CWS	Civil / Structural Works				
CWSMA	Masonry Works				
CWSMA05	Plastering, 25mm Thick for Ordinary Walls	29	sq.m.	₱	₱
CWSME	Metal Works				
	Stair Hand Railings				
CWSME0710	50mmø G.I. Pipe, Sch. 40	227	kg		
CWSME0713	12mm Square Bar	339	kg		
MC	Miscellaneous and Consumables				
MC/G05	Grinding Disc, 4"	2	piece		
MC/G19	Acetylene Tank (Refill)	2	tank		
MC/G23	Cut off Blade / Wheel	2	piece		
MC/G27	Drill Bit, 20mm Ø (metal)	3	piece		
MC/G29	Oxygen Tank (Refill)	1	tank		
MC/G36	Welding Rod (for Steel)	8	kg		
				Material Cost II-CWS	₱
				Labor Cost II-CWS	
				Direct Cost II-CWS	₱

ITEM CODE	WORK DESCRIPTION AND SCOPE OF WORKS	QTY.	UNIT	UNIT COST	TOTAL COST
II-AW	Architectural Works				
AW02	Ceiling Finishes				
AW0204	6.0mm thk. Fibercement Board including	446	sq.m.	P	P
AWP	Painting Works				
AWP0101	Flat Latex Paint Finish (Interior Wall - 3	1,342	sq.m.		
AWP0102	Elastomeric Paint Finish (Exterior Wall - 3	983	sq.m.		

ITEM CODE	WORK DESCRIPTION AND SCOPE OF WORKS	QTY.	UNIT	UNIT COST	TOTAL COST
AWP0105	Flat Latex Paint Finish (Ceiling - 3 Coats)	446	sq.m.		
AWP0106	Epoxy Enamel Paint Finish (Steel Member -	19	sq.m.		
				Material Cost II-AW02-AWP	₱
				Labor Cost II-AW02-AWP	
				Subtotal II-AW02-AWP	₱
AW01	Fabricated Materials				
AWW	Installation of Windows				
AWW06	W3 - (0.9m x 3.0m) Aluminum Framed Jalousie Window	28	set	₱	₱
AWW08	W4 - (0.9m x 1.2m) Steel Casement Window	45	set		
				Material Cost II-AWP	₱
				Labor Cost II-AWP	
				Subtotal II-AWP	₱
				Material Cost II-AW	₱
				Labor Cost II-AW	
				Direct Cost II-AW	₱
II-EW	Electrical Works				
EW01	Pipes				
EW0101	20mmØ PVC Pipe	260	piece	₱	₱
EW0102	25mmØ PVC Pipe	40	piece		
EW0103	32mmØ PVC Pipe	11	piece		
EW0115	50mmØ IMC Pipe	1	piece		
EW04	Mouldings				
EW0403	16mm x 16mm x 2.44m Rectangular PVC Moulding	275	piece		
EW05	Fittings and Accessories				
EW05001	20mmØ PVC Elbow	75	piece		
EW05002	25mmØ PVC Elbow	20	piece		
EW05003	32mmØ PVC Elbow	4	piece		
EW05010	20mmØ PVC Adaptor	445	piece		
EW05011	25mmØ PVC Adaptor	10	piece		
EW05012	32mmØ PVC Adaptor	8	piece		
EW05022	20mmØ PVC Locknut and Bushing	445	pair		
EW05023	25mmØ PVC Locknut and Bushing	10	pair		
EW05024	32mmØ PVC Locknut and Bushing	7	pair		
EW05036	50mmØ IMC Elbow	1	piece		
EW05046	50mmØ IMC Locknut and Bushing	2	pair		
EW05056	50mmØ IMC Coupling	2	piece		
EW05144	100mm² Ø Solderless Connector	2	piece		
EW05158	50mmØ Weatherproof Entrance Cap	1	piece		
EW06	Boxes and Fabricated Pullbox				
EW0601	50mm x 100mm PVC Utility Box	110	piece		
EW0602	100mm x 100mm PVC Junction Box with Cover	135	piece		
EW09	Wires and Cables				

ITEM CODE	WORK DESCRIPTION AND SCOPE OF WORKS	QTY.	UNIT	UNIT COST	TOTAL COST
EW0901	THHN Wires				
EW090102a	3.5mm ² THHN Wire	19	roll		
EW090103a	5.5mm ² THHN Wire	2	roll		
EW090105b	14mm ² THHN Wire	60	l.m.		
EW090111	80mm ² THHN Wire	10	l.m.		

ITEM CODE	WORK DESCRIPTION AND SCOPE OF WORKS	QTY.	UNIT	UNIT COST	TOTAL COST
EW0903	TW Wires				
EW090302a	3.5mm ² TW Wire	10	roll		
EW090304b	8.0mm ² TW Wire	30	l.m.		
EW090306b	22mm ² TW Wire	5	l.m.		
EW10	Wiring Devices and Other Fixtures				
EW1002	Convenience Outlet with Grounding, Two-Gang	63	piece		
EW1003	Outlet with Grounding, One-Gang, for ACU, Heavy Duty	5	piece		
EW1015	Switch with Plate and Cover, One-Gang	4	piece		
EW1016	Switch with Plate and Cover, Two-Gang	14	piece		
EW1018	Switch with Plate and Cover, Three-Way	8	piece		
EW11	Lighting fixtures (Energy Efficient)				
EW11040	600mm x 1200mm, 2 x 18w LED, Troffer Type, with Complete Accessories, Surface Mounted Type	63	set		
EW11067	Surface Mounted Box Type Lighting Fixture with 1-18W Daylight LED Tube	24	set		
EW11096	10W LED bulb	1	piece		
EW11114	100mmØ Plastic Receptacle	1	piece		
EW11140	Orbit Fan with Selector Switch	32	set		
EW13	Panel Board				
ASSY.	MDP Main: 200AT, 2P, 230V Branches: 4 - 60 AT, 2P, 230V Enclosure: NEMA 1 with Ground Terminals	1	assy		
ASSY.	LPPA Main: 60AT, 2P, 230V Branches: 4 - 20 AT, 2P, 230V 2 - 30 AT, 2P, 230V Enclosure: NEMA 1 with Ground Terminals and Terminal Lugs	1	assy		
ASSY.	LPPF Main: 60AT, 2P, 230V Branches: 2 - 20 AT, 2P, 230V 3 - 30 AT, 2P, 230V Enclosure: NEMA 1 with Ground Terminals and Terminal Lugs	1	assy		
ASSY.	LPPB/LPPC Main: 60AT, 2P, 230V Branches: 8 - 20 AT, 2P, 230V Enclosure: NEMA 1 with Ground Terminals and Terminal Lugs	2	assy		
EW16	Pipe Hangers and Supports				
EW1601	Horizontal Layout of Pipe	317	l.m.		
EW1602	Vertical Layout of Pipe	5	l.m.		
MC	Miscellaneous and Consumables				
MC/G	(Common Items)				
MC/G06	Hacksaw Blade	2	piece		
MC/G13	All Around Sealant	4	tube		
MC/G14	Solvent Cement, 400cc	5	can		
MC/G17	Torch with Butane	2	piece		

ITEM CODE	WORK DESCRIPTION AND SCOPE OF WORKS	QTY.	UNIT	UNIT COST	TOTAL COST
MC/G18	Waste Cloth	2	kg		
MC/G37	G.I. Tie Wire, Ga.16 (for Wire / Cable Pulling)	5	kg		

ITEM CODE	WORK DESCRIPTION AND SCOPE OF WORKS	QTY.	UNIT	UNIT COST	TOTAL COST
MC/E	(Electrical Works)				
MC/E01	Electrical Tape	5	roll		
MC/E03	Pulling Lubricant	2	can		
MC/E04	Rubber Tape	5	roll		
				Material Cost II-EW	₱
				Labor Cost II-EW	
				Direct Cost II-EW	₱
				MATERIAL COST II	₱
				LABOR COST II	
				DIRECT COST II	₱
III	REHABILITATION OF CASTELO 1 BUILDING				
III-SW	Site Works				
DEMV002	Chipping Works for Pipelines and Utilities (Horizontal) / Concrete Topping	1	cu.m.	₱	₱
				Direct Cost III-SW	₱
III-CWS	Civil/ Structural Works				
CWSMA	Masonry Works				
CWSMA05	Plastering, 25mm thk for Ordinary Walls	12	sq.m.	₱	₱
				Material Cost III-CWS	₱
				Labor Cost III-CWS	
				Direct Cost III-CWS	₱
III-AW	Architectural Works				
AWP	Painting Works				
AWP0101	Flat Latex Paint Finish (Interior Wall - 3 Coats)	12	sq.m.	₱	₱
				Material Cost III-AW	₱
				Labor Cost III-AW	
				Direct Cost III-AW	₱
III-EW	Electrical Works				
EW01	Pipes				
EW0101	20mmØ PVC Pipe	71	piece	₱	₱
EW0113	32mmØ IMC Pipe	1	piece		
EW04	Mouldings				
EW0403	16mm x 16mm x 2.44m Rectangular PVC Moulding	298	piece		
EW05	Fittings and Accessories				
EW05001	20mmØ PVC Elbow	40	piece		
EW05010	20mmØ PVC Adaptor	250	piece		
EW05022	20mmØ PVC Locknut and Bushing	250	pair		
EW05034	32mmØ IMC Elbow	1	piece		
EW05044	32mmØ IMC Locknut and Bushing	2	pair		

ITEM CODE	WORK DESCRIPTION AND SCOPE OF WORKS	QTY.	UNIT	UNIT COST	TOTAL COST
EW05054	32mmØ IMC Coupling	2	piece		
EW05144	100mm² Ø Solderless Connector	2	piece		
EW05156	32mmØ Weatherproof Entrance Cap	1	piece		
EW06	Boxes and Fabricated Pullbox				
EW0601	50mm x 100mm PVC Utility Box	50	piece		
EW0602	100mm x 100mm PVC Junction Box with Cover	75	piece		

ITEM CODE	WORK DESCRIPTION AND SCOPE OF WORKS	QTY.	UNIT	UNIT COST	TOTAL COST
EW09	Wires and Cables				
EW0901	THHN Wires				
EW090102a	3.5mm ² THHN Wire	14	roll		
EW090107b	30mm ² THHN Wire	20	l.m.		
EW0903	TW Wires				
EW090302a	3.5mm ² TW Wire	7	roll		
EW090304b	8.0mm ² TW Wire	10	l.m.		
EW10	Wiring Devices and Other Fixtures				
EW1002	Convenience Outlet with Grounding, Two-Gang	24	piece		
EW1015	Switch with Plate and Cover, One-Gang	6	piece		
EW1016	Switch with Plate and Cover, Two-Gang	13	piece		
EW1018	Switch with Plate and Cover, Three-Way	3	piece		
EW11	Lighting fixtures (Energy Efficient)				
EW11040	600mm x 1200mm, 2 x 18w LED, Troffer Type, with Complete Accessories, Surface Mounted Type	24	set		
EW11067	Surface Mounted Box Type Lighting Fixture with 1-18W Daylight LED Tube	17	set		
EW11096	10W LED bulb	3	piece		
EW11114	100mmØ Plastic Receptacle	3	piece		
EW11140	Orbit Fan with Selector Switch	24	set		
EW13	Panel Board				
EW130202	20AT , 2P, Bolt-On	2	piece		
EW16	Pipe Hangers and Supports				
EW1601	Horizontal Layout of Pipe	300	l.m.		
EW1602	Vertical Layout of Pipe	5	l.m.		
MC	Miscellaneous and Consumables				
MC/G	(Common Items)				
MC/G06	Hacksaw Blade	2	piece		
MC/G13	All Around Sealant	4	tube		
MC/G14	Solvent Cement, 400cc	4	can		
MC/G17	Torch with Butane	2	piece		
MC/G18	Waste Cloth	3	kg		
MC/G37	G.I. Tie Wire, Ga.16 (for Wire / Cable	6	kg		
MC/E	(Electrical Works)				
MC/E01	Electrical Tape	12	roll		
MC/E03	Pulling Lubricant	2	can		
MC/E04	Rubber Tape	7	roll		
				Material Cost III-EW	₱
				Labor Cost III-EW	
				Direct Cost III-EW	₱
				MATERIAL COST III	₱
				LABOR COST III	
				DIRECT COST III	₱
IV	REHABILITATION OF CASTELO 2 BUILDING				
IV-SW	Site Works				

ITEM CODE	WORK DESCRIPTION AND SCOPE OF WORKS	QTY.	UNIT	UNIT COST	TOTAL COST
DEMV002	Chipping Works for Pipelines and Utilities (Horizontal) / Concrete Topping	2	cu.m.	₱	₱
				Direct Cost IV-SW	₱

ITEM CODE	WORK DESCRIPTION AND SCOPE OF WORKS	QTY.	UNIT	UNIT COST	TOTAL COST
IV-CWS	Civil/ Structural Works				
CWSMA	Masonry Works				
CWSMA05	Plastering, 25mm thk for Ordinary Walls	20	sq.m.	₱	₱
				Material Cost IV-CWS	₱
				Labor Cost IV-CWS	
				Direct Cost IV-CWS	₱
IV-AW	Architectural Works				
AWP	Painting Works				
AWP0101	Flat Latex Paint Finish (Interior Wall - 3 Coats)	20	sq.m.	₱	₱
				Material Cost IV-AW	₱
				Labor Cost IV-AW	
				Direct Cost IV-AW	₱
IV-EW	Electrical Works				
EW01	Pipes				
EW0101	20mmØ PVC Pipe	105	piece	₱	₱
EW0103	32mmØ PVC Pipe	20	piece		
EW0113	32mmØ IMC Pipe	3	piece		
EW04	Mouldings				
EW0403	16mm x 16mm x 2.44m Rectangular PVC Moulding	406	piece		
EW05	Fittings and Accessories				
EW05001	20mmØ PVC Elbow	40	piece		
EW05003	32mmØ PVC Elbow	4	piece		
EW05010	20mmØ PVC Adaptor	340	piece		
EW05012	32mmØ PVC Adaptor	8	piece		
EW05022	20mmØ PVC Locknut and Bushing	340	pair		
EW05024	32mmØ PVC Locknut and Bushing	8	pair		
EW05034	32mmØ IMC Elbow	1	piece		
EW05044	32mmØ IMC Locknut and Bushing	2	pair		
EW05054	32mmØ IMC Coupling	2	piece		
EW05144	100mm² Ø Solderless Connector	2	piece		
EW05156	32mmØ Weatherproof Entrance Cap	1	piece		
EW06	Boxes and Fabricated Pullbox				
EW0601	50mm x 100mm PVC Utility Box	80	piece		
EW0602	100mm x 100mm PVC Junction Box with Cover	90	piece		
EW09	Wires and Cables				
EW0901	THHN Wires				
EW090102a	3.5mm² THHN Wire	18	roll		
EW090105b	14mm² THHN Wire	120	l.m.		
EW090107b	30mm² THHN Wire	20	l.m.		
EW0903	TW Wires				
EW090302a	3.5mm² TW Wire	9	roll		
EW090304b	8.0mm² TW Wire	70	l.m.		
EW10	Wiring Devices and Other Fixtures				

ITEM CODE	WORK DESCRIPTION AND SCOPE OF WORKS	QTY.	UNIT	UNIT COST	TOTAL COST
EW1002	Convenience Outlet with Grounding, Two-Gang	32	piece		
EW1015	Switch with Plate and Cover, One-Gang	13	piece		
EW1016	Switch with Plate and Cover, Two-Gang	9	piece		
EW1018	Switch with Plate and Cover, Three-Way	4	piece		

ITEM CODE	WORK DESCRIPTION AND SCOPE OF WORKS	QTY.	UNIT	UNIT COST	TOTAL COST
EW11	Lighting fixtures (Energy Efficient)				
EW11040	600mm x 1200mm, 2 x 18w LED, Troffer Type, with Complete Accessories, Surface Mounted Type	32	set		
EW11067	Surface Mounted Box Type Lighting Fixture with 1-18W Daylight LED Tube	32	set		
EW11096	10W LED bulb	3	piece		
EW11114	100mmØ Plastic Receptacle	3	piece		
EW11140	Orbit Fan with Selector Switch	16	set		
EW13	Panel Board				
ASSY.	MDP Main: 100AT, 2P, 230V Branches: 4 - 60 AT, 2P, 230V Enclosure: NEMA 1 with Ground Terminals and Terminal Lugs	1	assy		
EW16	Pipe Hangers and Supports				
EW1601	Horizontal Layout of Pipe	300	l.m.		
EW1602	Vertical Layout of Pipe	5	l.m.		
MC	Miscellaneous and Consumables				
MC/G	(Common Items)				
MC/G06	Hacksaw Blade	2	piece		
MC/G13	All Around Sealant	4	tube		
MC/G14	Solvent Cement, 400cc	4	can		
MC/G17	Torch with Butane	2	piece		
MC/G18	Waste Cloth	3	kg		
MC/G37	G.I. Tie Wire, Ga.16 (for Wire / Cable	6	kg		
MC/E	(Electrical Works)				
MC/E01	Electrical Tape	12	roll		
MC/E03	Pulling Lubricant	2	can		
MC/E04	Rubber Tape	7	roll		
				Material Cost IV-EW	₱
				Labor Cost IV-EW	
				Direct Cost IV-EW	₱
				MATERIAL COST IV	₱
				LABOR COST IV	
				DIRECT COST IV	₱
V	REHABILITATION OF CASTELO 3 BUILDING				
V-SW	Site Works				
DEMV002	Chipping Works for Pipelines and Utilities (Horizontal) / Concrete Topping	1	cu.m.	₱	₱
				Direct Cost V-SW	₱
V-CWS	Civil/ Structural Works				
CWSMA	Masonry Works				
CWSMA05	Plastering, 25mm thk for Ordinary Walls	17	sq.m.	₱	₱

ITEM CODE	WORK DESCRIPTION AND SCOPE OF WORKS	QTY.	UNIT	UNIT COST	TOTAL COST
				Material Cost V-CWS	₱
				Labor Cost V-CWS	
				Direct Cost V-CWS	₱

ITEM CODE	WORK DESCRIPTION AND SCOPE OF WORKS	QTY.	UNIT	UNIT COST	TOTAL COST
V-AW	Architectural Works				
AWP	Painting Works				
AWP0101	Flat Latex Paint Finish (Interior Wall - 3 Coats)	17	sq.m.	₱	₱
				Material Cost V-AW	₱
				Labor Cost V-AW	
				Direct Cost V-AW	₱
V-EW	Electrical Works				
EW01	Pipes				
EW0101	20mmØ PVC Pipe	105	piece	₱	₱
EW0113	32mmØ IMC Pipe	3	piece		
EW04	Mouldings				
EW0403	16mm x 16mm x 2.44m Rectangular PVC Moulding	406	piece		
EW05	Fittings and Accessories				
EW05001	20mmØ PVC Elbow	40	piece		
EW05010	20mmØ PVC Adaptor	260	piece		
EW05022	20mmØ PVC Locknut and Bushing	260	pair		
EW05034	32mmØ IMC Elbow	1	piece		
EW05044	32mmØ IMC Locknut and Bushing	2	pair		
EW05054	32mmØ IMC Coupling	2	piece		
EW05144	100mm² Ø Solderless Connector	2	piece		
EW05156	32mmØ Weatherproof Entrance Cap	1	piece		
EW06	Boxes and Fabricated Pullbox				
EW0601	50mm x 100mm PVC Utility Box	40	piece		
EW0602	100mm x 100mm PVC Junction Box with Cover	90	piece		
EW09	Wires and Cables				
EW0901	THHN Wires				
EW090102a	3.5mm² THHN Wire	18	roll		
EW090107b	30mm² THHN Wire	20	l.m.		
EW0903	TW Wires				
EW090302a	3.5mm² TW Wire	9	roll		
EW090304b	8.0mm² TW Wire	10	l.m.		
EW10	Wiring Devices and Other Fixtures				
EW1002	Convenience Outlet with Grounding, Two-Gang	33	piece		
EW1015	Switch with Plate and Cover, One-Gang	13	piece		
EW1016	Switch with Plate and Cover, Two-Gang	15	piece		
EW1018	Switch with Plate and Cover, Three-Way	4	piece		
EW11	Lighting fixtures (Energy Efficient)				
EW11040	600mm x 1200mm, 2 x 18w LED, Troffer Type, with Complete Accessories, Surface Mounted Type	32	set		
EW11067	Surface Mounted Box Type Lighting Fixture with 1-18W Daylight LED Tube	32	set		
EW11096	10W LED bulb	4	piece		
EW11114	100mmØ Plastic Receptacle	4	piece		
EW11140	Orbit Fan with Selector Switch	16	set		

ITEM CODE	WORK DESCRIPTION AND SCOPE OF WORKS	QTY.	UNIT	UNIT COST	TOTAL COST
EW13	Panel Board				
EW130202	20AT , 2P, Bolt-On	1	piece		
EW130204	30AT , 2P, Bolt-On	3	piece		
EW16	Pipe Hangers and Supports				
EW1601	Horizontal Layout of Pipe	300	l.m.		
EW1602	Vertical Layout of Pipe	5	l.m.		

ITEM CODE	WORK DESCRIPTION AND SCOPE OF WORKS	QTY.	UNIT	UNIT COST	TOTAL COST
MC	Miscellaneous and Consumables				
MC/G	(Common Items)				
MC/G06	Hacksaw Blade	2	piece		
MC/G13	All Around Sealant	4	tube		
MC/G14	Solvent Cement, 400cc	4	can		
MC/G17	Torch with Butane	2	piece		
MC/G18	Waste Cloth	3	kg		
MC/G37	G.I. Tie Wire, Ga.16 (for Wire / Cable Pulling)	6	kg		
MC/E	(Electrical Works)				
MC/E01	Electrical Tape	12	roll		
MC/E03	Pulling Lubricant	2	can		
MC/E04	Rubber Tape	7	roll		
				Material Cost V-EW	₱
				Labor Cost V-EW	
				Direct Cost V-EW	₱
				MATERIAL COST V	₱
				LABOR COST V	
				DIRECT COST V	₱
VI	REHABILITATION OF MATHAY BUILDING				
VI-SW	Site Works				
DEM002	Chipping Works for Pipelines and Utilities (Horizontal) / Concrete Topping	2	cu.m.	₱	₱
				Direct Cost VI-SW	₱
VI-CWS	Civil/ Structural Works				
CWSMA	Masonry Works				
CWSMA05	Plastering, 25mm thk for Ordinary Walls	32	sq.m.	₱	₱
				Material Cost VI-CWS	₱
				Labor Cost VI-CWS	
				Direct Cost VI-CWS	₱
VI-AW	Architectural Works				
AWP	Painting Works				
AWP0101	Flat Latex Paint Finish (Interior Wall - 3 Coats)	32	sq.m.	₱	₱
				Material Cost VI-AW	₱
				Labor Cost VI-AW	
				Direct Cost VI-AW	₱
VI-EW	Electrical Works				
EW01	Pipes				
EW0101	20mmØ PVC Pipe	150	piece	₱	₱
EW0102	25mmØ PVC Pipe	50	piece		

ITEM CODE	WORK DESCRIPTION AND SCOPE OF WORKS	QTY.	UNIT	UNIT COST	TOTAL COST
EW0116	65mmØ IMC Pipe	2	piece		
EW04	Mouldings				
EW0403	16mm x 16mm x 2.44m Rectangular PVC Moulding	384	piece		
EW05	Fittings and Accessories				
EW05001	20mmØ PVC Elbow	75	piece		
EW05002	25mmØ PVC Elbow	20	piece		
EW05010	20mmØ PVC Adaptor	450	piece		

ITEM CODE	WORK DESCRIPTION AND SCOPE OF WORKS	QTY.	UNIT	UNIT COST	TOTAL COST
EW05011	25mmØ PVC Adaptor	8	piece		
EW05022	20mmØ PVC Locknut and Bushing	450	pair		
EW05023	25mmØ PVC Locknut and Bushing	8	pair		
EW05037	65mmØ IMC Elbow	3	piece		
EW05047	65mmØ IMC Locknut and Bushing	2	pair		
EW05057	65mmØ IMC Coupling	2	piece		
EW05145	125mm² Ø Solderless Connector	2	piece		
EW05159	65mmØ Weatherproof Entrance Cap,	1	piece		
EW06	Boxes and Fabricated Pullbox				
EW0601	50mm x 100mm PVC Utility Box	110	piece		
EW0602	100mm x 100mm PVC Junction Box with Cover	115	piece		
EW09	Wires and Cables				
EW0901	THHN Wires				
EW090102a	3.5mm² THHN Wire	20	roll		
EW090103a	5.5mm² THHN Wire	2	roll		
EW090113	125mm² THHN Wire	20	l.m.		
EW0903	TW Wires				
EW090302a	3.5mm² TW Wire	11	roll		
EW090307b	30mm² TW Wire	10	l.m.		
EW10	Wiring Devices and Other Fixtures				
EW1002	Convenience Outlet with Grounding, Two-Gang	44	piece		
EW1003	Outlet with Grounding, One-Gang, for ACU, Heavy Duty	4	piece		
EW1015	Switch with Plate and Cover, One-Gang	13	piece		
EW1016	Switch with Plate and Cover, Two-Gang	12	piece		
EW1018	Switch with Plate and Cover, Three-Way	3	piece		
EW11	Lighting fixtures (Energy Efficient)				
EW11040	600mm x 1200mm, 2 x 18w LED, Troffer Type, with Complete Accessories, Surface Mounted Type	44	set		
EW11067	Surface Mounted Box Type Lighting Fixture with 1-18W Daylight LED Tube	33	set		
EW11096	10W LED bulb	4	piece		
EW11114	100mmØ Plastic Receptacle	4	piece		
EW11140	Orbit Fan with Selector Switch	24	set		
EW13	Panel Board				
EW130204	30AT , 2P, Bolt-On	7	piece		
EW16	Pipe Hangers and Supports				
EW1601	Horizontal Layout of Pipe	350	l.m.		
EW1602	Vertical Layout of Pipe	5	l.m.		
MC	Miscellaneous and Consumables				
MC/G	(Common Items)				
MC/G06	Hacksaw Blade	12	piece		
MC/G13	All Around Sealant	8	tube		
MC/G14	Solvent Cement, 400cc	18	can		
MC/G17	Torch with Butane	2	piece		
MC/G18	Waste Cloth	10	kg		
MC/G37	G.I. Tie Wire, Ga.16 (for Wire / Cable	10	kg		
MC/E	(Electrical Works)				

ITEM CODE	WORK DESCRIPTION AND SCOPE OF WORKS	QTY.	UNIT	UNIT COST	TOTAL COST
MC/E01	Electrical Tape	20	roll		
MC/E03	Pulling Lubricant	4	can		
MC/E04	Rubber Tape	10	roll		
				Material Cost VI-EW	₱
				Labor Cost VI-EW	
				Direct Cost VI-EW	₱

ITEM CODE	WORK DESCRIPTION AND SCOPE OF WORKS	QTY.	UNIT	UNIT COST	TOTAL COST
				MATERIAL COST VI	₱
				LABOR COST VI	
				DIRECT COST VI	₱
VII	REHABILITATION OF DEPED BUILDING				
VII-SW	Site Works				
DEM002	Chipping Works for Pipelines and Utilities (Horizontal) / Concrete Topping	2	cu.m.	₱	₱
				Direct Cost VII-SW	₱
VII-CWS	Civil/ Structural Works				
CWSMA	Masonry Works				
CWSMA05	Plastering, 25mm thk for Ordinary Walls	31	sq.m.	₱	₱
				Material Cost VII-CWS	₱
				Labor Cost VII-CWS	
				Direct Cost VII-CWS	₱
VII-AW	Architectural Works				
AWP	Painting Works				
AWP0101	Flat Latex Paint Finish (Interior Wall - 3 Coats)	31	sq.m.	₱	₱
				Material Cost VII-AW	₱
				Labor Cost VII-AW	
				Direct Cost VII-AW	₱
VII-EW	Electrical Works				
EW01	Pipes				
EW0101	20mmØ PVC Pipe	175	piece	₱	₱
EW0103	32mmØ PVC Pipe	20	piece		
EW0112	25mmØ IMC Pipe	1	piece		
EW0113	32mmØ IMC Pipe	3	piece		
EW04	Mouldings				
EW0403	16mm x 16mm x 2.44m Rectangular PVC Moulding	379	piece		
EW05	Fittings and Accessories				
EW05001	20mmØ PVC Elbow	90	piece		
EW05003	32mmØ PVC Elbow	3	piece		
EW05010	20mmØ PVC Adaptor	392	piece		
EW05012	32mmØ PVC Adaptor	6	piece		
EW05022	20mmØ PVC Locknut and Bushing	392	pair		
EW05024	32mmØ PVC Locknut and Bushing	6	pair		
EW05033	25mmØ IMC Elbow	1	piece		
EW05034	32mmØ IMC Elbow	1	piece		
EW05043	25mmØ IMC Locknut and Bushing	2	pair		
EW05044	32mmØ IMC Locknut and Bushing	2	pair		
EW05053	25mmØ IMC Coupling	2	piece		
EW05054	32mmØ IMC Coupling	2	piece		

ITEM CODE	WORK DESCRIPTION AND SCOPE OF WORKS	QTY.	UNIT	UNIT COST	TOTAL COST
EW05144	100mm ² Ø Solderless Connector	4	piece		
EW05155	25mmØ Weatherproof Entrance Cap	1	piece		
EW05156	32mmØ Weatherproof Entrance Cap	1	piece		
EW06	Boxes and Fabricated Pullbox				
EW0601	50mm x 100mm PVC Utility Box	96	piece		
EW0602	100mm x 100mm PVC Junction Box with Cover	100	piece		

ITEM CODE	WORK DESCRIPTION AND SCOPE OF WORKS	QTY.	UNIT	UNIT COST	TOTAL COST
EW09	Wires and Cables				
EW0901	THHN Wires				
EW090102a	3.5mm ² THHN Wire	20	roll		
EW090105b	14mm ² THHN Wire	140	l.m.		
EW090107b	30mm ² THHN Wire	20	l.m.		
EW0903	TW Wires				
EW090302a	3.5mm ² TW Wire	10	roll		
EW090304b	8.0mm ² TW Wire	80	l.m.		
EW10	Wiring Devices and Other Fixtures				
EW1002	Convenience Outlet with Grounding, Two-Gang	40	piece		
EW1015	Switch with Plate and Cover, One-Gang	5	piece		
EW1016	Switch with Plate and Cover, Two-Gang	18	piece		
EW1018	Switch with Plate and Cover, Three-Way	6	piece		
EW11	Lighting fixtures (Energy Efficient)				
EW11040	600mm x 1200mm, 2 x 18w LED, Troffer Type, with Complete Accessories, Surface Mounted Type	36	set		
EW11067	Surface Mounted Box Type Lighting Fixture with 1-18W Daylight LED Tube	33	set		
EW11096	10W LED bulb	3	piece		
EW11114	100mmØ Plastic Receptacle	3	piece		
EW11140	Orbit Fan with Selector Switch	18	set		
EW13	Panel Board				
ASSY.	MDP Main: 100AT, 2P, 230V Branches: 3 - 60 AT, 2P, 230V Enclosure: NEMA 1 with Ground Terminals and Terminal Lugs	1	assy		
ASSY.	LPPA/LPPB/LPPC Main: 60AT, 2P, 230V Branches: 7 - 20 AT, 2P, 230V 1 - 30 AT, 2P, 230V Enclosure: NEMA 1 with Ground Terminals and Terminal Lugs	3	assy		
ASSY.	RED SCHOOL Main: 60AT, 2P, 230V Branches: 4 - 20 AT, 2P, 230V 4 - 30 AT, 2P, 230V Enclosure: NEMA 1 with Ground Terminals and Terminal Lugs	1	assy		
EW16	Pipe Hangers and Supports				
EW1601	Horizontal Layout of Pipe	350	l.m.		
EW1602	Vertical Layout of Pipe	5	l.m.		
MC	Miscellaneous and Consumables				
MC/G	(Common Items)				
MC/G06	Hacksaw Blade	12	piece		
MC/G13	All Around Sealant	8	tube		
MC/G14	Solvent Cement, 400cc	18	can		
MC/G17	Torch with Butane	2	piece		
MC/G18	Waste Cloth	10	kg		

ITEM CODE	WORK DESCRIPTION AND SCOPE OF WORKS	QTY.	UNIT	UNIT COST	TOTAL COST
MC/G37	G.I. Tie Wire, Ga.16 (for Wire / Cable	10	kg		
MC/E	(Electrical Works)				
MC/E01	Electrical Tape	20	roll		
MC/E03	Pulling Lubricant	4	can		
MC/E04	Rubber Tape	10	roll		
				Material Cost VII-EW	₱
				Labor Cost VII-EW	
				Direct Cost VII-EW	₱

ITEM CODE	WORK DESCRIPTION AND SCOPE OF WORKS	QTY.	UNIT	UNIT COST	TOTAL COST
				MATERIAL COST VII	₱
				LABOR COST VII	
				DIRECT COST VII	₱
VIII	REHABILITATION OF COVERED COURT AND				
VIII-SW	Site Works				
DEMV015	Removal of Ceiling Board Including Framing	67	sq.m.	₱	₱
DEMV025b	Removal of Existing Roof Sheet Including Framing Sytem (Truss)	436	sq.m.		
RELV008	Removal and Relocation of Existing Stainless Steel Lettering	6	letter		
				Direct Cost VIII	₱
VIII-CWS	Civil/ Structural Works				
CWSPRW	Roofing Works				
CWSPRW03	Poly Carbonate Sheet				
CWSPRW0302	Twin Wall, 1.50 mm thk with Connection Accessories (Any Color)	2	sq.m.		
CWSPRW07	Pre-Painted Roofing, Components and Accessories				
CWSPRW0701	Pre Painted Rib Type Long Span Metal Roofing Sheet, 0.45mm thk GA 26 with Connection Accessories	457	sq.m.		
CWSPRW0707	Pre Painted G.I. Ridge Roll, GA 26 x 0.60m	30	l.m.		
				Material Cost VIII-CWS	₱
				Labor Cost VIII-CWS	
				Direct Cost VIII-CWS	₱
VIII-AW	Architectural Works				
AW02	Ceiling Finishes				
AW0203	4.5mm thk. Fibercement Board including framing and accessories	70	sq.m.	₱	₱
AWP	Painting Works				
AWP0102	Elastomeric Paint Finish (Exterior Wall - 3 Coats)	593	sq.m.		
AWP0105	Flat Latex Paint Finish (Ceiling - 3 Coats)	70	sq.m.		
AWP0104	Rubberized Paint Finish (Concrete Floor - 3 Coats)	50	sq.m.		
AWP0106	Epoxy Enamel Paint Finish (Steel Member - 3 Coats)	24	sq.m.		
				Material Cost VIII-AW	₱
				Labor Cost VIII-AW	
				Direct Cost VIII-AW	₱
VIII-EW	Electrical Works				
EW01	Pipes				
EW0101	20mmØ PVC Pipe	92	piece	₱	₱
EW0112	25mmØ IMC Pipe	2	piece		

ITEM CODE	WORK DESCRIPTION AND SCOPE OF WORKS	QTY.	UNIT	UNIT COST	TOTAL COST
EW05	Fittings and Accessories				
EW05001	20mmØ PVC Elbow	40	piece		
EW05010	20mmØ PVC Adaptor	80	piece		
EW05022	20mmØ PVC Locknut and Bushing	80	pair		
EW05033	25mmØ IMC Elbow	1	piece		
EW05043	25mmØ IMC Locknut and Bushing	2	pair		
EW05053	25mmØ IMC Coupling	2	piece		

ITEM CODE	WORK DESCRIPTION AND SCOPE OF WORKS	QTY.	UNIT	UNIT COST	TOTAL COST
EW05144	100mm ² Ø Solderless Connector	2	piece		
EW05155	25mmØ Weatherproof Entrance Cap	1	piece		
EW06	Boxes and Fabricated Pullbox				
EW0601	50mm x 100mm PVC Utility Box	18	piece		
EW0602	100mm x 100mm PVC Junction Box with Cover	21	piece		
EW09	Wires and Cables				
EW0901	THHN Wires				
EW090102a	3.5mm ² THHN Wire	4	roll		
EW090105b	14mm ² THHN Wire	50	l.m.		
EW0903	TW Wires				
EW090302a	3.5mm ² TW Wire	2	roll		
EW090304b	8.0mm ² TW Wire	10	l.m.		
EW10	Wiring Devices and Other Fixtures				
EW1002	Convenience Outlet with Grounding, Two-Gang	12	piece		
EW1016	Switch with Plate and Cover, Two-Gang	1	piece		
EW11	Lighting fixtures (Energy Efficient)				
EW11040	600mm x 1200mm, 2 x 18w LED, Troffer Type, with Complete Accessories, Surface Mounted Type	4	set		
EW11067	Surface Mounted Box Type Lighting Fixture with 1-18W Daylight LED Tube	2	set		
EW11140	Orbit Fan with Selector Switch	3	set		
EW11075	LED Floodlight IP65 50W	10	set		
EW13	Panel Board				
ASSY.	MDP Main: 60AT, 2P, 230V Branches: 5 - 20 AT, 2P, 230V Enclosure: NEMA 3R with Ground Terminals	1	assy		
EW16	Pipe Hangers and Supports				
EW1601	Horizontal Layout of Pipe	70	l.m.		
EW1602	Vertical Layout of Pipe	5	l.m.		
MC	Miscellaneous and Consumables				
MC/G	(Common Items)				
MC/G06	Hacksaw Blade	2	piece		
MC/G13	All Around Sealant	2	tube		
MC/G14	Solvent Cement, 400cc	1	can		
MC/G17	Torch with Butane	2	piece		
MC/G18	Waste Cloth	3	kg		
MC/G37	G.I. Tie Wire, Ga.16 (for Wire / Cable Pulling)	3	kg		
MC/E	(Electrical Works)				
MC/E01	Electrical Tape	10	roll		
MC/E03	Pulling Lubricant	2	can		
MC/E04	Rubber Tape	5	roll		
				Material Cost VIII-EW	₱
				Labor Cost VIII-EW	
				Direct Cost VIII-EW	₱

ITEM CODE	WORK DESCRIPTION AND SCOPE OF WORKS	QTY.	UNIT	UNIT COST	TOTAL COST
				MATERIAL COST VIII	₱
				LABOR COST VIII	
				DIRECT COST VIII	₱
IX	CONSTRUCTION OF FIRE EXIT AT CASTELO 2				
IX-SW	Site Works				
SW01	Layout and Staking	14	sq.m.	₱	₱
SW02	Site Clearing and Preparation	14	sq.m.		
SW04	Backfill	5	cu.m.		

ITEM CODE	WORK DESCRIPTION AND SCOPE OF WORKS	QTY.	UNIT	UNIT COST	TOTAL COST
DEMV004	Demolition of Existing Structure (Fire Exit)	12	cu.m.		
DEMV004	Demolition of Existing Structure (Extended Beam)	1	cu.m.		
DEMV004	Demolition of Existing Structure (Extended Slab)	6	cu.m.		
DEMV004	Demolition of Existing Structure (Fish Pond)	14	cu.m.		
106	Excavation (Structure)	7	cu.m.		
				Direct Cost IX-SW	₱
IX-CWS	Civil/ Structural Works				
CWSE	Earthworks				
CWSE01	Gravel Bedding	1	cu.m.	₱	₱
CWSC	Concrete Works				
CWSCR1	Ready Mix Concrete (3/4" Gravel at 28 days;				
CWSCR106	Column Pedestal	1	cu.m.		
CWSCR106	Footing	2	cu.m.		
CWSCR106	Slab on Fill	1	cu.m.		
CWSCR106	Wall Footing	2	cu.m.		
CWSRB	Reinforcing Steel Bar including G.I. Tie Wire				
CWSRB40	Grade 40 Reinforcing Steel Bar including G.I. Tie Wire # 16				
CWSRB4001	10mm Ø Column Ties	40	kg		
CWSRB4001	10mm Ø Slab on Fill	26	kg		
CWSRB4001	10mm Ø Wall Footing	25	kg		
CWSRB4002	12mm Ø Wall Footing	39	kg		
CWSRB 60	Grade 60 Reinforcing Steel Bar including G.I. Tie Wire # 16				
CWSRB 6001	16mm Ø Column Pedestal	59	kg		
CWSRB 6001	16mm Ø Footing Pedestal	78	kg		
CWSF	Formworks, Scaffoldings and Shoring				
CWSF03	Column / Pedestal	6	sq.m.		
CWSMA	Masonry Works				
CWSMA09	Plain Cement Finish	3	sq.m.		
CWSMA04	150mm CHB Wall Laying, including Mortar, Reinforcement and Two-Face Plastering	20	sq.m.		
CWSMP	Moisture Protection				
CWSMPV	Vapor Barrier Sheet (provide prior to Concrete Pouring)				
CWSMPV03	6 mil	10	sq.m.		
CWSMPW03	Membrane Type	20	sq.m.		
CWSME	Metal Works				
	Fire Exit				
CWSME0717	Steel Column (W12 x 45)	1042	kg		
CWSME0704	300mm x 300mm x 25mm Base Plate	38	kg		
CWSME0704	200mm x 400mm x 25mm Base Plate	33	kg		
CWSME0717	Steel Beam 01	836	kg		
CWSME0717	Cantilever Beam	1425	kg		
CWSME0704	250mm x 500mm x 25mm Anchor Plate	310	kg		
CWSME0706	75mm x 300mm x 7mm Metal Channel	702	kg		

ITEM CODE	WORK DESCRIPTION AND SCOPE OF WORKS	QTY.	UNIT	UNIT COST	TOTAL COST
CWSME0706	75mm x 200mm x 7mm Metal Channel	611	kg		
CWSME0714	50mm x 100mm x 4mm Tubular Bar	190	kg		
CWSME0703	50mm x 50mm x 6mm Angle Bar	703	kg		
CWSME0707	4mm Checkered Plate	1510	kg		
CI/S02036	25mm x 200mm Anchor Bolt	14	piece		
CI/S02036	25mm x 200mm Dyna Bolt	96	piece		
CWSME0705	50mm Ø B.I. Pipe Steel Handrail	550	kg		
CWSME0713	16mm Square Bar	912	kg		

ITEM CODE	WORK DESCRIPTION AND SCOPE OF WORKS	QTY.	UNIT	UNIT COST	TOTAL COST
	Enclosure				
CWSME0714	50mm x 50mm x 2mm Tubular Bar	109	kg		
CWSME0713	16mm Square Bar	215	kg		
	Gate				
CWSME0714	50mm x 50mm x 2mm Tubular Bar	69	kg		
CWSME0713	12mm Square Bar	107	kg		
CWSME0815	Barrel Bolt	3	set		
CWSME0808	Cylindrical Hinge, Heavy Duty	9	set		
MC	Miscellaneous and Consumables				
MC/G05	Grinding Disc, 4"	13	piece		
MC/G19	Acetylene Tank (Refill)	9	tank		
MC/G23	Cut off Blade / Wheel	15	piece		
MC/G27	Drill Bit, 20mm Ø (metal)	14	piece		
MC/G29	Oxygen Tank (Refill)	18	tank		
MC/G36	Welding Rod (for Steel)	100	kg		
				Material Cost IX-CWS	₱
				Labor Cost IX-CWS	
				Direct Cost IX-CWS	₱
IX-AW	Architectural Works				
AWP	Painting Works				
AWP0102	Elastomeric Paint Finish (Exterior Wall - 3 Coats)	15	sq.m.	₱	₱
AWP0106	Epoxy Enamel Paint Finish (Steel Member - 3 Coats)	318	sq.m.		
				Material Cost IX-AW	₱
				Labor Cost IX-AW	
				Direct Cost IX-AW	₱
				MATERIAL COST IX	₱
				LABOR COST IX	
				DIRECT COST IX	₱
X	UPGRADING OF ELECTRICAL SYSTEM				
X-EW	Electrical Works				
EW01	Pipes				
EW0102	25mmØ PVC Pipe	1	piece	₱	₱
EW0116	65mmØ IMC Pipe	2	piece		
EW0117	80mmØ IMC Pipe	3	piece		
EW05	Fittings and Accessories				
EW05011	25mmØ PVC Adaptor	2	piece		
EW05023	25mmØ PVC Locknut and Bushing	2	pair		
EW05037	65mmØ IMC Elbow	2	piece		
EW05038	80mmØ IMC Elbow	3	piece		
EW05047	65mmØ IMC Locknut and Bushing	4	pair		
EW05048	80mmØ IMC Locknut and Bushing	6	pair		

ITEM CODE	WORK DESCRIPTION AND SCOPE OF WORKS	QTY.	UNIT	UNIT COST	TOTAL COST
EW05148	200mm ² Ø Solderless Connector	6	piece		
EW05159	65mmØ Weatherproof Entrance Cap, Diecast Type	2	piece		
EW05160	80mmØ Weatherproof Entrance Cap, Diecast Type	3	piece		
EW05164	Secondary Rack with 3-Spool, Heavy Duty	33	set		
EW12	Grounding System				
EW1202	20mm Ø x 3000mm Grounding Rod with Ground Clamp	3	set		

ITEM CODE	WORK DESCRIPTION AND SCOPE OF WORKS	QTY.	UNIT	UNIT COST	TOTAL COST
EW1203	Oval Eyebolt with Nut	1	piece		
EW1216	Powder for GT Connection	3	tube		
EW09	Wires and Cables				
EW0901	THHN Wires				
EW090113	125mm² THHN Wire	40	l.m.		
EW090116	200mm² THHN Wire	36	l.m.		
EW0902	THW Wires				
EW090209	50mm² THW Wire	100	l.m.		
EW090212	100mm² THW Wire	610	l.m.		
EW0903	TW Wires				
EW090307b	30mm² TW Wire	15	l.m.		
EW0904	Bare Copper Wires (Stranded)				
EW090409	50mm² Bare Copper Wire	15	l.m.		
EW13	Panel board				
EW 1301	Main Breaker (Bolt-On)				
ASSY	Main: 500AT, 3P, 230V, MCCB 3-350AT, 3P, 230V Enclosure: NEMA 3R with Ground Terminals and Terminal Lugs	1	assy		
EW16	Pipe Hangers and Supports				
EW1602	Vertical Layout of Pipe	15	l.m.		
MC	Miscellaneous and Consumables				
MC/G	(Common Items)				
MC/G06	Hacksaw Blade	3	piece		
MC/G13	All Around Sealant	2	tube		
MC/G18	Waste Cloth	5	kg		
MC/G37	G.I. Tie Wire, Ga.16 (for Wire / Cable Pulling)	3	kg		
MC/E01	Electrical Tape	10	roll		
MC/E04	Rubber Tape	7	roll		
MC/E12	16mmØ Nylon Rope	50	l.m.		
				Material Cost X-EW	₱
				Labor Cost X-EW	
				Direct Cost X-EW	₱
X-UTI	Utility and Ancillary Works				
X-UTI-SW	Site Works				
	Excavation	1	cu.m.	₱	₱
				Subtotal I - UTI - SW	₱
CWS	Civil/Structural Works				
UT010302	Earth Pit 0.30 x 0.30 x 0.30	1	unit	₱	₱
				Subtotal I - UTI - SW	₱
				Direct Cost X-UTI	₱
				MATERIAL COST X	₱

ITEM CODE	WORK DESCRIPTION AND SCOPE OF WORKS	QTY.	UNIT	UNIT COST	TOTAL COST
				LABOR COST X	
				DIRECT COST X	₱

ITEM CODE	WORK DESCRIPTION AND SCOPE OF WORKS	QTY.	UNIT	UNIT COST	TOTAL COST
-----------	-------------------------------------	------	------	-----------	------------

SUMMARY

ITEM CODE	WORK DESCRIPTION AND SCOPE OF WORKS	AMOUNT
OGR	OTHER GENERAL REQUIREMENTS (NON - O.C.M.)	P
	TOTAL ESTIMATED COST A	P
GR I II III IV V VI VII VIII IX X	GENERAL REQUIREMENTS REHABILITATION OF SB HALL BUILDING REHABILITATION OF LIBAN BUILDING REHABILITATION OF CASTELO 1 BUILDING REHABILITATION OF CASTELO 2 BUILDING REHABILITATION OF CASTELO 3 BUILDING REHABILITATION OF MATHAY BUILDING REHABILITATION OF DEPED BUILDING REHABILITATION OF COVERED COURT AND STAGE CONSTRUCTION OF FIRE EXIT AT CASTELO 2 BUILDING UPGRADING OF ELECTRICAL SYSTEM	P
NOTE: • Strictly enforce health protocols relative to the latest applicable DPWH memorandum	TOTAL DIRECT COST B	P
	Overhead, Contingencies and Miscellaneous Expenses (OCM) Profit	
	TOTAL ESTIMATED COST B	P
	TOTAL ESTIMATED COST A	P
	TOTAL ESTIMATED COST B	P
	TOTAL ESTIMATED COST	P
	VAT	
	TOTAL APPROVED BUDGET FOR THE CONTRACT	P

Section IX. Checklist of Technical and Financial Documents

Notes on the Checklist of Technical and Financial Documents

The prescribed documents in the checklist are mandatory to be submitted in the Bid, but shall be subject to the following:

- a. GPPB Resolution No. 09-2020 on the efficient procurement measures during a State of Calamity or other similar issuances that shall allow the use of alternate documents in lieu of the mandated requirements; or
- b. any subsequent GPPB issuances adjusting the documentary requirements after the effectivity of the adoption of the PBDs.

The BAC shall be checking the submitted documents of each Bidder against this checklist to ascertain if they are all present, using a non-discretionary “pass/fail” criterion pursuant to Section 30 of the 2016 revised IRR of RA No. 9184.

Checklist of Technical and Financial Documents

I. TECHNICAL COMPONENT ENVELOPE

Class “A” Documents

Legal Documents

- ☐ (a) Valid PhilGEPS Registration Certificate (Platinum Membership) (all pages);
and
- ☐ (b) Registration certificate from Securities and Exchange Commission (SEC), Department of Trade and Industry (DTI) for sole proprietorship, or Cooperative Development Authority (CDA) for cooperatives or its equivalent document;
and
- ☐ (c) Mayor’s or Business permit issued by the city or municipality where the principal place of business of the prospective bidder is located, or the equivalent document for Exclusive Economic Zones or Areas;
and
- ☐ (e) Tax clearance per E.O. No. 398, s. 2005, as finally reviewed and approved by the Bureau of Internal Revenue (BIR).

Technical Documents

- ☐ (f) Statement of the prospective bidder of all its ongoing government and private contracts, including contracts awarded but not yet started, if any, whether similar or not similar in nature and complexity to the contract to be bid (*please see attached prescribed forms required by the QC – BAC for Infrastructure and Consultancy*); **and**
- ☐ (g) Statement of the bidder’s Single Largest Completed Contract (SLCC) similar to the contract to be bid, except under conditions provided under the rules with an attached Notice of Award, Notice to Proceed, Contract and Certificate of Acceptance (*please see attached prescribed form required by the QC – BAC for Infrastructure and Consultancy*); **and**
- ☐ (h) Philippine Contractors Accreditation Board (PCAB) License;
or
Special PCAB License in case of Joint Ventures;
and registration for the type and cost of the contract to be bid; **and**
- ☐ (i) Original copy of Bid Security. If in the form of a Surety Bond, submit also a certification issued by the Insurance Commission;
or
Original copy of Notarized Bid Securing Declaration; **and**
- ☐ (j) Project Requirements, which shall include the following:
 - ☐ a. Organizational chart for the contract to be bid;
 - ☐ b. List of contractor’s key personnel (*e.g.*, Project Manager, Project Engineers, Materials Engineers, and Foremen), to be assigned to the contract to be bid, with their complete qualification and experience data (*please see attached prescribed form required by the QC – BAC for Infrastructure and Consultancy*);
 - ☐ c. List of contractor’s major equipment units, which are owned, leased, and/or under purchase agreements, supported by proof of ownership or certification of availability of equipment from the equipment

lessor/vendor for the duration of the project, as the case may be (*please see attached prescribed form required by the QC – BAC for Infrastructure and Consultancy*); **and**

- ☐ (k) Original duly signed Omnibus Sworn Statement (OSS); **and** if applicable, Original Notarized Secretary's Certificate in case of a corporation, partnership, or cooperative; or Original Special Power of Attorney of all members of the joint venture giving full power and authority to its officer to sign the OSS and do acts to represent the Bidder.

Additional Technical Requirements:

- ☐ • Certificate of Site Inspection or Affidavit of Site Inspection as part of Omnibus Sworn Statement
- ☐ • Affidavit of Undertaking for Key Personnel and Equipment (*please see attached prescribed form required by the QC – BAC for Infrastructure and Consultancy*)
- ☐ • Equipment Utilization Schedule
- ☐ • Manpower Schedule
- ☐ • Construction Schedule and S-Curve
- ☐ • PERT-CMP
- ☐ • Construction Methods

Financial Documents

- ☐ (l) The prospective bidder's audited financial statements, showing, among others, the prospective bidder's total and current assets and liabilities, stamped "received" by the BIR or its duly accredited and authorized institutions, for the preceding calendar year which should not be earlier than two (2) years from the date of bid submission; **and**
- ☐ (m) The prospective bidder's computation of Net Financial Contracting Capacity (NFCC) (*please see attached prescribed form required by the QC – BAC for Infrastructure and Consultancy*).

Class "B" Documents

- ☐ (n) If applicable, duly signed joint venture agreement (JVA) in accordance with RA No. 4566 and its IRR in case the joint venture is already in existence; **or** duly notarized statements from all the potential joint venture partners stating that they will enter into and abide by the provisions of the JVA in the instance that the bid is successful.

II. FINANCIAL COMPONENT ENVELOPE

- ☐ (o) Original of duly signed and accomplished Financial Bid Form; **and**

Other documentary requirements under RA No. 9184

- ☐ (p) Original of duly signed Bid Prices in the Bill of Quantities; **and**
- ☐ (q) Duly accomplished Detailed Estimates Form, including a summary sheet indicating the unit prices of construction materials, labor rates, and equipment rentals used in coming up with the Bid; **and**
- ☐ (r) Cash Flow by Quarter.

Bid Form for the Procurement of Infrastructure Projects
[shall be submitted with the Bid]

BID FORM

Date : _____
Project Identification No. : _____

To: *[name and address of Procuring Entity]*

Having examined the Philippine Bidding Documents (PBDs) including the Supplemental or Bid Bulletin Numbers *[insert numbers]*, the receipt of which is hereby duly acknowledged, we, the undersigned, declare that:

- a. We have no reservation to the PBDs, including the Supplemental or Bid Bulletins, for the Procurement Project: *[insert name of contract]*;
- b. We offer to execute the Works for this Contract in accordance with the PBDs;
- c. The total price of our Bid in words and figures, excluding any discounts offered below is: *[insert information]*;
- d. The discounts offered and the methodology for their application are: *[insert information]*;
- e. The total bid price includes the cost of all taxes, such as, but not limited to: *[specify the applicable taxes, e.g. (i) value added tax (VAT), (ii) income tax, (iii) local taxes, and (iv) other fiscal levies and duties]*, which are itemized herein and reflected in the detailed estimates,
- f. Our Bid shall be valid within the a period stated in the PBDs, and it shall remain binding upon us at any time before the expiration of that period;
- g. If our Bid is accepted, we commit to obtain a Performance Security in the amount of *[insert percentage amount]* percent of the Contract Price for the due performance of the Contract, or a Performance Securing Declaration in lieu of the the allowable forms of Performance Security, subject to the terms and conditions of issued GPPB guidelines¹ for this purpose;
- h. We are not participating, as Bidders, in more than one Bid in this bidding process, other than alternative offers in accordance with the Bidding Documents;
- i. We understand that this Bid, together with your written acceptance thereof included in your notification of award, shall constitute a binding contract between us, until a formal Contract is prepared and executed; and
- j. We understand that you are not bound to accept the Lowest Calculated Bid or any other Bid that you may receive.

¹ currently based on GPPB Resolution No. 09-2020

- k. We likewise certify/confirm that the undersigned, is the duly authorized representative of the bidder, and granted full power and authority to do, execute and perform any and all acts necessary to participate, submit the bid, and to sign and execute the ensuing contract for the [Name of Project] of the [Name of the Procuring Entity].
- l. We acknowledge that failure to sign each and every page of this Bid Form, including the Bill of Quantities, shall be a ground for the rejection of our bid.

Name: _____

Legal Capacity: _____

Signature: _____

Duly authorized to sign the Bid for and behalf of: _____

Date: _____

Bid Securing Declaration Form

[shall be submitted with the Bid if bidder opts to provide this form of bid security]

REPUBLIC OF THE PHILIPPINES)

CITY OF _____) S.S.

BID SECURING DECLARATION **Project Identification No.: [Insert number]**

To: *[Insert name and address of the Procuring Entity]*

I/We, the undersigned, declare that:

1. I/We understand that, according to your conditions, bids must be supported by a Bid Security, which may be in the form of a Bid Securing Declaration.
2. I/We accept that: (a) I/we will be automatically disqualified from bidding for any procurement contract with any procuring entity for a period of two (2) years upon receipt of your Blacklisting Order; and, (b) I/we will pay the applicable fine provided under Section 6 of the Guidelines on the Use of Bid Securing Declaration, within fifteen (15) days from receipt of the written demand by the procuring entity for the commission of acts resulting to the enforcement of the bid securing declaration under Sections 23.1(b), 34.2, 40.1 and 69.1, except 69.1(f), of the IRR of RA No. 9184; without prejudice to other legal action the government may undertake.
3. I/We understand that this Bid Securing Declaration shall cease to be valid on the following circumstances:
 - a. Upon expiration of the bid validity period, or any extension thereof pursuant to your request;
 - b. I am/we are declared ineligible or post-disqualified upon receipt of your notice to such effect, and (i) I/we failed to timely file a request for reconsideration or (ii) I/we filed a waiver to avail of said right; and
 - c. I am/we are declared the bidder with the Lowest Calculated Responsive Bid, and I/we have furnished the performance security and signed the Contract.

IN WITNESS WHEREOF, I/We have hereunto set my/our hand/s this ____ day of [month] [year] at [place of execution].

[Insert NAME OF BIDDER OR ITS AUTHORIZED REPRESENTATIVE]

[Insert signatory's legal capacity]

Affiant

[Jurat]

[Format shall be based on the latest Rules on Notarial Practice]

Omnibus Sworn Statement (Revised)
[shall be submitted with the Bid]

REPUBLIC OF THE PHILIPPINES)
CITY/MUNICIPALITY OF _____) S.S.

AFFIDAVIT

I, [Name of Affiant], of legal age, [Civil Status], [Nationality], and residing at [Address of Affiant], after having been duly sworn in accordance with law, do hereby depose and state that:

1. *[Select one, delete the other:]*

[If a sole proprietorship:] I am the sole proprietor or authorized representative of [Name of Bidder] with office address at [address of Bidder];

[If a partnership, corporation, cooperative, or joint venture:] I am the duly authorized and designated representative of [Name of Bidder] with office address at [address of Bidder];

2. *[Select one, delete the other:]*

[If a sole proprietorship:] As the owner and sole proprietor, or authorized representative of [Name of Bidder], I have full power and authority to do, execute and perform any and all acts necessary to participate, submit the bid, and to sign and execute the ensuing contract for [Name of the Project] of the [Name of the Procuring Entity], as shown in the attached duly notarized Special Power of Attorney;

[If a partnership, corporation, cooperative, or joint venture:] I am granted full power and authority to do, execute and perform any and all acts necessary to participate, submit the bid, and to sign and execute the ensuing contract for [Name of the Project] of the [Name of the Procuring Entity], as shown in the attached [state title of attached document showing proof of authorization (e.g., duly notarized Secretary's Certificate, Board/Partnership Resolution, or Special Power of Attorney, whichever is applicable)];

3. [Name of Bidder] is not "blacklisted" or barred from bidding by the Government of the Philippines or any of its agencies, offices, corporations, or Local Government Units, foreign government/foreign or international financing institution whose blacklisting rules have been recognized by the Government Procurement Policy Board, **by itself or by relation, membership, association, affiliation, or controlling interest with another blacklisted person or entity as defined and provided for in the Uniform Guidelines on Blacklisting;**

4. Each of the documents submitted in satisfaction of the bidding requirements is an authentic copy of the original, complete, and all statements and information provided therein are true and correct;

5. [Name of Bidder] is authorizing the Head of the Procuring Entity or its duly authorized representative(s) to verify all the documents submitted;

6. *[Select one, delete the rest:]*

[If a sole proprietorship:] The owner or sole proprietor is not related to the Head of the Procuring Entity, members of the Bids and Awards Committee (BAC), the Technical Working Group, and the BAC Secretariat, the head of the Project Management Office or the end-user unit, and the project consultants by consanguinity or affinity up to the third civil degree;

[If a partnership or cooperative:] None of the officers and members of [Name of Bidder] is related to the Head of the Procuring Entity, members of the Bids and Awards Committee (BAC), the Technical Working Group, and the BAC Secretariat, the head of the Project

Management Office or the end-user unit, and the project consultants by consanguinity or affinity up to the third civil degree;

[If a corporation or joint venture:] None of the officers, directors, and controlling stockholders of *[Name of Bidder]* is related to the Head of the Procuring Entity, members of the Bids and Awards Committee (BAC), the Technical Working Group, and the BAC Secretariat, the head of the Project Management Office or the end-user unit, and the project consultants by consanguinity or affinity up to the third civil degree;

7. *[Name of Bidder]* complies with existing labor laws and standards; and
8. *[Name of Bidder]* is aware of and has undertaken the responsibilities as a Bidder in compliance with the Philippine Bidding Documents, which includes:
 - a. Carefully examining all of the Bidding Documents;
 - b. Acknowledging all conditions, local or otherwise, affecting the implementation of the Contract;
 - c. Making an estimate of the facilities available and needed for the contract to be bid, if any; and
 - d. Inquiring or securing Supplemental/Bid Bulletin(s) issued for the *[Name of the Project]*.
9. *[Name of Bidder]* did not give or pay directly or indirectly, any commission, amount, fee, or any form of consideration, pecuniary or otherwise, to any person or official, personnel or representative of the government in relation to any procurement project or activity.
10. **In case advance payment was made or given, failure to perform or deliver any of the obligations and undertakings in the contract shall be sufficient grounds to constitute criminal liability for Swindling (Estafa) or the commission of fraud with unfaithfulness or abuse of confidence through misappropriating or converting any payment received by a person or entity under an obligation involving the duty to deliver certain goods or services, to the prejudice of the public and the government of the Philippines pursuant to Article 315 of Act No. 3815 s. 1930, as amended, or the Revised Penal Code.**
11. We pledge that the project will be completed in accordance and congruency with the approved plans and programs.

IN WITNESS WHEREOF, I have hereunto set my hand this ___ day of _____ 20__ at _____, Philippines.

[Insert NAME OF BIDDER OR ITS AUTHORIZED REPRESENTATIVE]

[Insert signatory's legal capacity]
Affiant

[Jurat]

[Format shall be based on the latest Rules on Notarial Practice]

Contract Agreement Form for the Procurement of Infrastructure Projects (Revised)

[not required to be submitted with the Bid, but it shall be submitted within ten (10) days after receiving the Notice of Award]

CONTRACT AGREEMENT

THIS AGREEMENT, made this *[insert date]* day of *[insert month]*, *[insert year]* between *[name and address of PROCURING ENTITY]* (hereinafter called the "Entity") and *[name and address of Contractor]* (hereinafter called the "Contractor").

WHEREAS, the Entity is desirous that the Contractor execute *[name and identification number of contract]* (hereinafter called "the Works") and the Entity has accepted the Bid for *[contract price in words and figures in specified currency]* by the Contractor for the execution and completion of such Works and the remedying of any defects therein.

NOW THIS AGREEMENT WITNESSETH AS FOLLOWS:

1. In this Agreement, words and expressions shall have the same meanings as are respectively assigned to them in the Conditions of Contract hereinafter referred to.
2. The following documents as required by the 2016 revised Implementing Rules and Regulations of Republic Act No. 9184 shall be deemed to form and be read and construed as part of this Agreement, viz.:

- a. Philippine Bidding Documents (PBDs);
 - i. Drawings/Plans;
 - ii. Specifications;
 - iii. Bill of Quantities;
 - iv. General and Special Conditions of Contract;
 - v. Supplemental or Bid Bulletins, if any;
- b. Winning bidder's bid, including the Eligibility requirements, Technical and Financial Proposals, and all other documents or statements submitted;

Bid form, including all the documents/statements contained in the Bidder's bidding envelopes, as annexes, and all other documents submitted (e.g., Bidder's response to request for clarifications on the bid), including corrections to the bid, if any, resulting from the Procuring Entity's bid evaluation;

- c. Performance Security;
 - d. Notice of Award of Contract and the Bidder's conforme thereto; and
 - e. Other contract documents that may be required by existing laws and/or the Procuring Entity concerned in the PBDs. **Winning bidder agrees that additional contract documents or information prescribed by the GPPB that are subsequently required for submission after the contract execution, such as the Notice to Proceed, Variation Orders, and Warranty Security, shall likewise form part of the Contract.**
3. In consideration for the sum of *[total contract price in words and figures]* or such other sums as may be ascertained, *[Named of the bidder]* agrees to *[state the object of the contract]* in accordance with his/her/its Bid.

4. The *[Name of the procuring entity]* agrees to pay the above-mentioned sum in accordance with the terms of the Bidding.

IN WITNESS whereof the parties thereto have caused this Agreement to be executed the day and year first before written.

[Insert Name and Signature] [Insert Name and Signature]

[Insert Signatory's Legal Capacity] [Insert Signatory's Legal Capacity]

for: for:

[Insert Procuring Entity] [Insert Name of Supplier]

Acknowledgment

[Format shall be based on the latest Rules on Notarial Practice]

LIST OF ALL ON-GOING GOVERNMENT AND PRIVATE CONTRACTS

NAME OF CONTRACTOR: _____

PROJECT TITLE (Name of the Contract) & EXACT PROJECT LOCATION	DATE OF CONTRACT	CONTRACT DURATION	PROJECT OWNER & POSTAL ADDRESS	NATURE OF WORK	CONTRACTOR'S ROLE (SOLE CONTRACTOR, SUBCONTRACTOR, PARTNER IN A JV) and PERCENTAGE OF PARTICIPATION	TOTAL CONTRACT VALUE AT AWARD	DATE OF COMPLETION or ESTIMATED COMPLETION TIME	TOTAL CONTRACT VALUE AT COMPLETION IF APPLICABLE	PERCENTAGE		VALUE OF OUTSTANDING WORKS (IN PHP)
									ACTUAL ACCOMPLISHMENT	PLANNED ACCOMPLISHMENT	

PHOTOCOPY ADDITIONAL FORMS, IF NECESSARY

Page _____ of _____

SINGLE LARGEST COMPLETED CONTRACT SIMILAR TO THE CONTRACT TO BE BID

NAME OF CONTRACTOR: _____

PROJECT TITLE: _____

PROJECT TITLE (Name of the Contract) & EXACT PROJECT LOCATION	DATE OF CONTRACT	CONTRACT DURATION	PROJECT OWNER & POSTAL ADDRESS	NATURE OF WORK	CONTRACTOR'S ROLE (SOLE CONTRACTOR, SUBCONTRACTOR, PARTNER IN A JV) and PERCENTAGE OF PARTICIPATION	TOTAL CONTRACT VALUE AT AWARD	DATE OF COMPLETION or ESTIMATED COMPLETION TIME	TOTAL CONTRACT VALUE AT COMPLETION IF APPLICABLE

PHOTOCOPY ADDITIONAL FORMS, IF NECESSARY

Page _____ of _____

LIST OF MAJOR EQUIPMENT TO BE USED FOR THE PROJECT

NAME OF CONTRACTOR: _____

PROJECT TITLE: _____

TYPE	DESCRIPTION / CAPACITY	SERIAL NO.	YEAR ACQUIRED	PRESENT LOCATION (SPECIFIC ADDRESS)	STATUS OF AVAILABILITY (OWNED/LEASED)

A. LIST OF KEY CONSTRUCTION PERSONNEL TO BE ASSIGNED TO THE PROJECT

NAME OF CONTRACTOR: _____

PROJECT TITLE: _____

NAME	POSITION	AGE	EDUCATIONAL ATTAINMENT	TYPE OF CONSTRUCTION EXPERIENCE	NO.OF YEARS WITH THE CONTRACTOR	PROFESSION	PRC NO.

COMPUTATION OF NET FINANCIAL CONTRACTING CAPACITY (NFCC)

NAME OF BIDDER: _____

CURRENT ASSETS*		PHP	_____
(LESS) CURRENT LIABILITIES*	(LESS)	PHP	_____
NETWORTH		PHP	_____
NETWORTH x 15	x 15	PHP	_____
(LESS) VALUE OF ALL OUTSTANDING ON-GOING CONTRACTS**	(LESS)	PHP	_____
(LESS) VALUE OF ALL AWARDED BUT NOT YET STARTED CONTRACTS AS OF DATE**	(LESS)	PHP	_____
NET FINANCIAL CONTRACTING CAPACITY		PHP	_____

NOTES: * CURRENT ASSETS AND LIABILITIES BASED ON AUDITED FINANCIAL STATEMENT FOR THE PRECEDING CALENDAR YEAR SUBMITTED TO B.I.R.

 ** BASED ON LIST OF ON-GOING AND AWRDED BUT NOT VEY STARTED CONTRACTS SUBMITTED

REPUBLIC OF THE PHILIPPINES)

_____) S.S.

AFFIDAVIT OF UNDERTAKING

I, _____ of legal age, Filipino, _____ **[OFFICER OR REPRESENTATIVE]**

with office address at _____ after having been duly sworn to in accordance with law, hereby voluntary depose and state:

That I am duly authorized representative of the **[Name of Bidder]** to execute this undertaking as evidenced by Secretary's Certificate and Board Resolution.

That **[Name of Bidder]** bidding for the (Name of Project)

That relative to the aforementioned Project, the **[Name of Bidder]** hereby undertake that the equipment to be use and the key personnel to be assign shall exclusively be used and will only perform to the said project until its completion.

That I am executing this affidavit to attest to the truth of the foregoing and in compliance with the submission of the technical requirements for the public bidding of the said project.

IN WITNESS HEREOF, I have hereunto signed my name below this _____ day of _____ at _____.

AFFIANT FURTHER SAYETH NAUGHT.

Affiant

SUBSCRIBED AND SWORN TO BEFORE ME this _____ day of _____
in _____

affiant exhibiting to me his/her _____ issued at _____
on _____.

Doc. No. ;
Page No. ;
Book No. ;
Series of 2020

Notary Public

