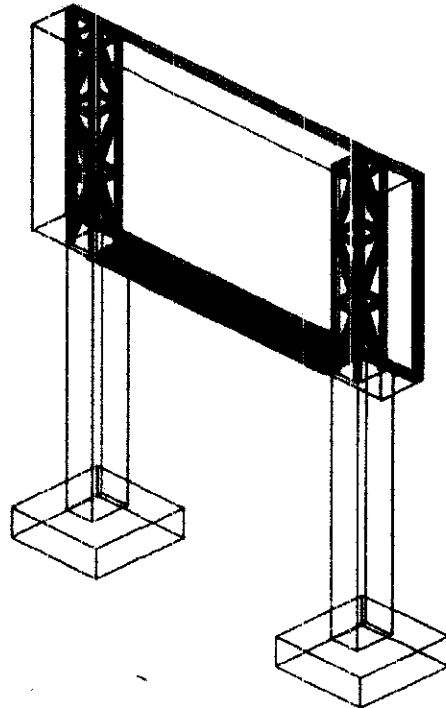




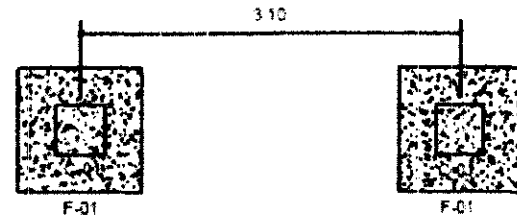
LED STRUCTURAL POST

MATERIALS FOR STEEL FRAME				
D (DEPTH)	H (HEIGHT)	W (WIDTH)	T (THICK)	QTY (QUANTITY)
1 CHANNEL BAR (6m)	2	6	1/4	6 PCS
2 CHANNEL BAR (6m)	2	4	1/4	5 PCS
3 TUBULAR (6m)	1 1/2	2	1/4	6 PCS
4 ANGLE BAR (6m)	2	2	1/4	14 PCS
5 MS PLATE (mm)	300	400	10	8 PCS
6 ANCHOR BOLT (16mm)				25 PCS

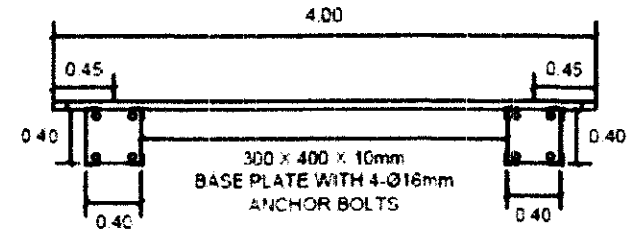
SCHEDULE OF FOOTINGS					
D (DEPTH)	T (THICK)	L (LENGTH)	W (WIDTH)	REINFORCEMENTS	
				"A"	"B"
1500	400	1500	1000	16'100	15'100



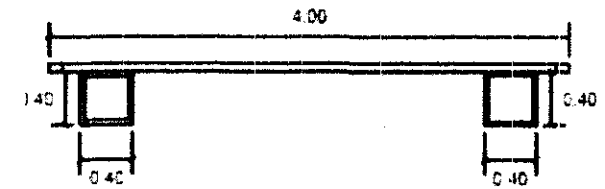
1 PERSPECTIVE VIEW
S-01



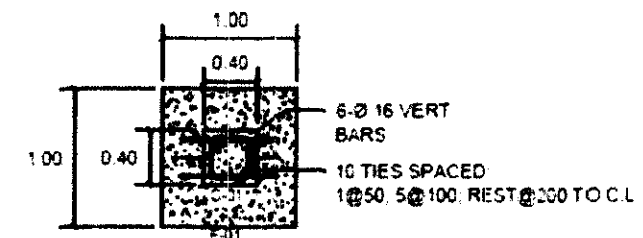
2 FOUNDATION PLAN
S-01



3 BOTTOM OF BILLBOARD
S-01



4 TOP OF BILLBOARD
S-01



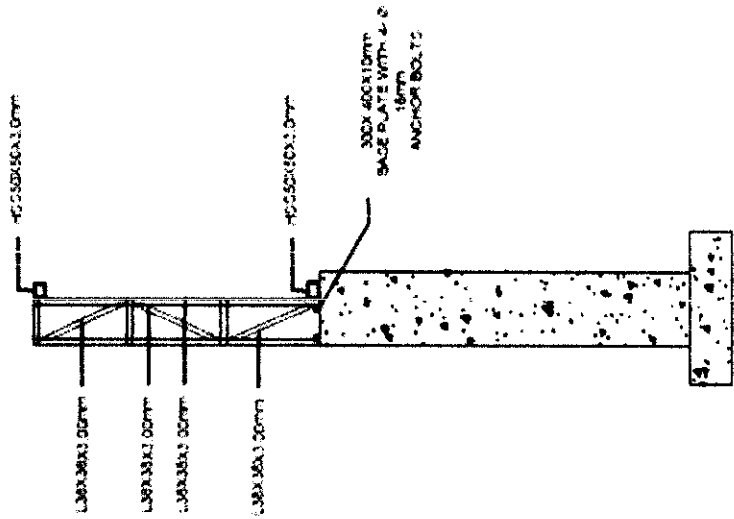
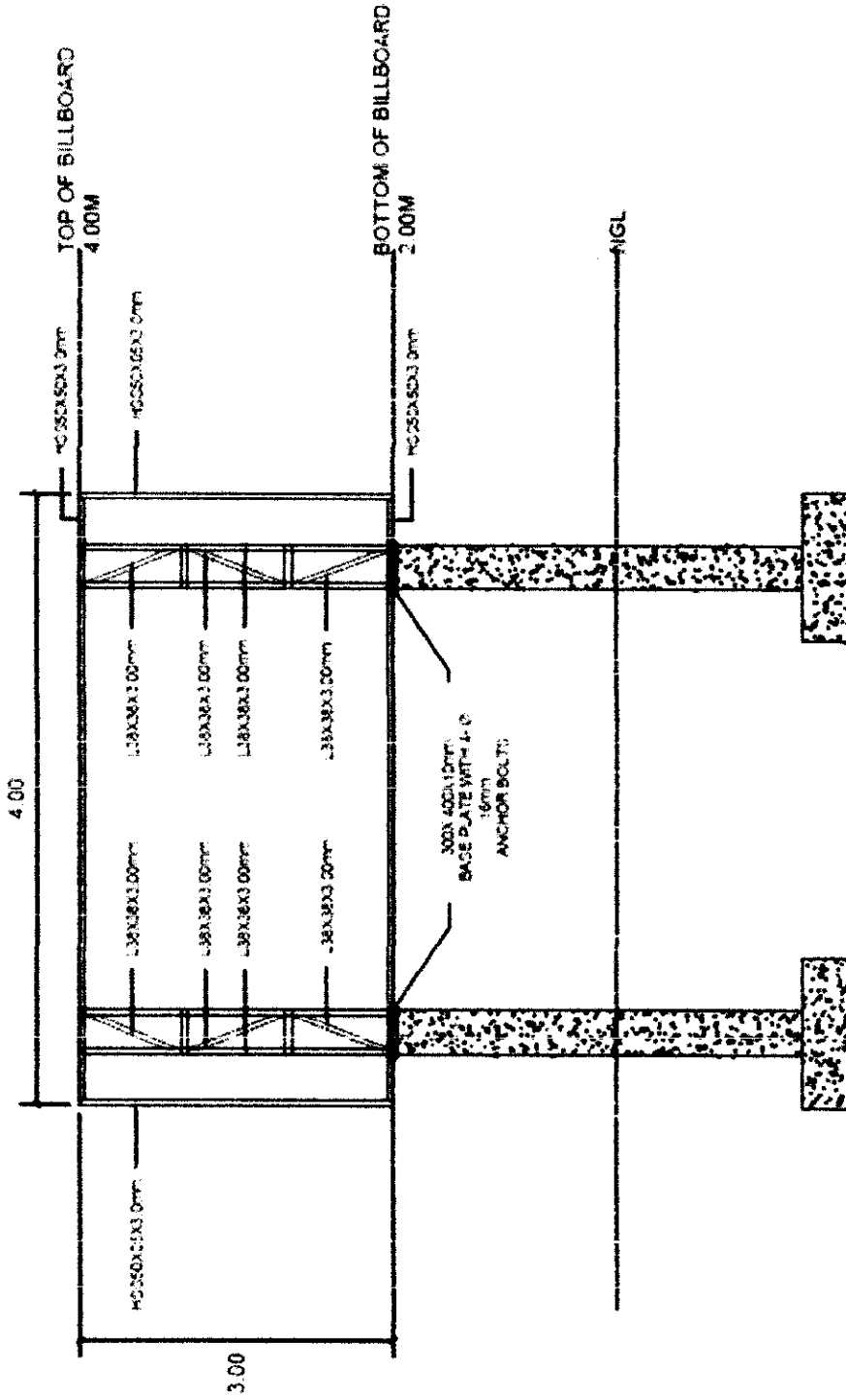
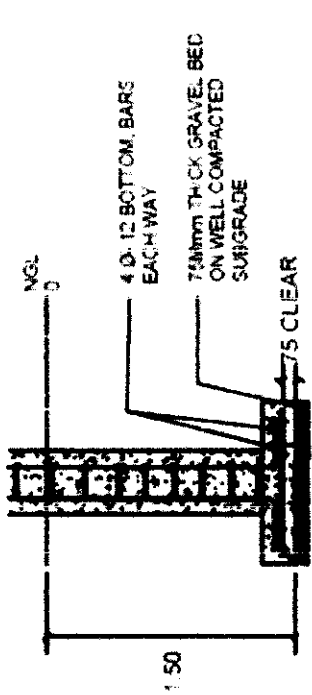
5 C-01 & F-01 DETAILS
S-01

0713





PANGKALAHATANG PAGAMUTAN NG LUNGSOD QUEZON
 (Quezon City General Hospital)
 PhilHealth Accredited Healthcare Provider.



Management System
 ISO 9001:2015



8 SIDE ELEVATION

7 FRONT ELEVATION



PANGKALAHATANG PAGAMUTAN NG LUNGSOD QUEZON
(Quezon City General Hospital)
PhilHealth Accredited Healthcare Provider



Prepared by:

JAMES V. BACARISAS, MMPA
Information System Analyst III

Noted by:

JOSEPHINE B. SABANDO, MD, RN, FPBA, MHA, FPSA
Medical Center Chief II
Hospital Director



Management System
ISO 9001:2015

MANAGEMENT SYSTEM
ISO 9001:2015



QCG.QCGH.ITS.F.03